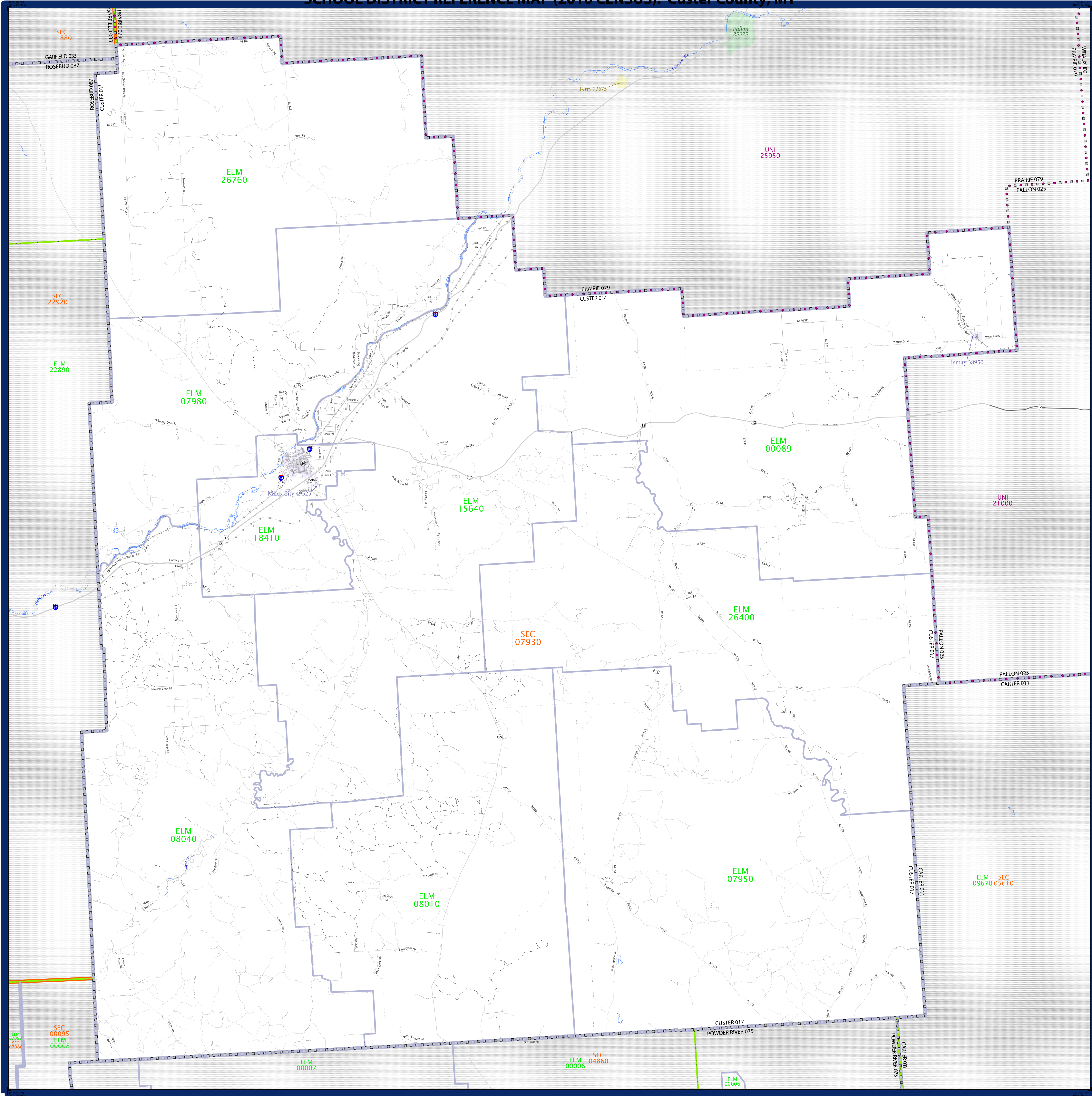


# SCHOOL DISTRICT REFERENCE MAP (2010 CENSUS): Custer County, MT



### LEGEND

SYMBOL DESCRIPTION	SYMBOL	SYMBOL DESCRIPTION	SYMBOL
Federal American Indian Reservation	[Dotted Pattern]	Water Body	[Blue Fill]
Off-Reservation Trust Land	[Dotted Pattern]	Swamp or Marsh	[Blue Dotted]
State American Indian Reservation	[Dotted Pattern]	Glacier	[Blue Dotted]
Alaska Native Regional Corporation	[Dotted Pattern]	Military	[Blue Dotted]
State (or statistically equivalent entity)	[Dotted Pattern]	National or State Park, Forest, or Recreation Area	[Blue Dotted]
County (or statistically equivalent entity)	[Dotted Pattern]	Inset Area	[Blue Dotted]
Minor Civil Division (MCD) <sup>1,2</sup>	[Dotted Pattern]	Outside Subject Area	[Blue Dotted]
Consolidated City	[Dotted Pattern]		
Incorporated Place <sup>1,3</sup>	[Dotted Pattern]		
Census Designated Place (CDP) <sup>3</sup>	[Dotted Pattern]		
Unified School District	[Purple Line]		
Secondary School District	[Orange Line]		
Elementary School District	[Green Line]		

Where state, county, and/or MCD boundaries coincide, the map shows the boundary symbol for only the highest-ranking of these boundaries.

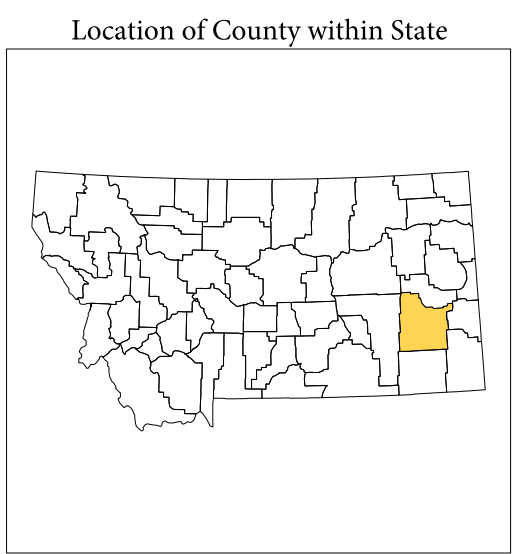
1 A "\*" following an MCD name denotes a false MCD. A "\*" following a place name indicates that a false MCD exists with the same name and FIPS code as the place; the false MCD label is not shown.

2 MCD boundaries are shown in the following states in which MCDs have functioning governments: Connecticut, Maine, Massachusetts, Michigan, Minnesota, New Hampshire, New Jersey, New York, Pennsylvania, Rhode Island, Vermont, and Wisconsin.

3 Place label color correlates to the place fill color.

### SCHOOL DISTRICTS WITHIN COUNTY

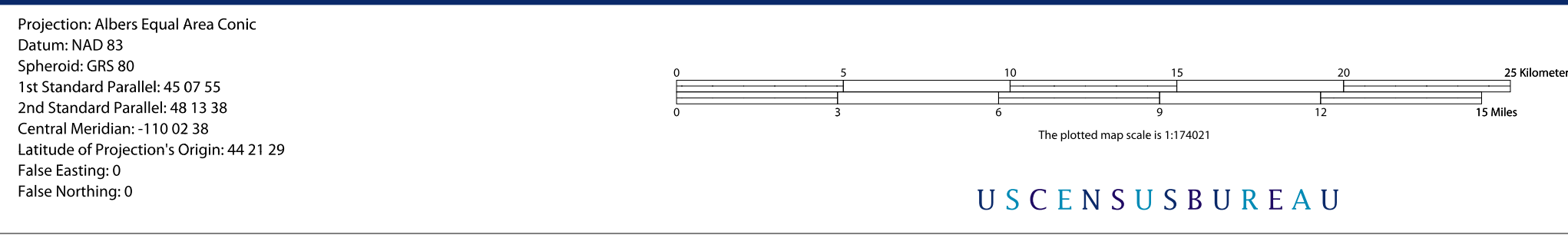
TYPE	CODE	NAME
ELM	00009	Cottonwood Elementary School District
ELM	07950	Spring Creek Elementary School District
ELM	07980	Arroyo Elementary School District
ELM	08010	S V Elementary School District
ELM	08040	S H Elementary School District
ELM	15640	Kincher Elementary School District
ELM	18410	Miles City Elementary School District
ELM	26400	Trail Creek Elementary School District
ELM	26760	Twin Buttes Elementary School District
SEC	07930	Custer County High School District



All legal boundaries and names are as of January 1, 2010. The boundaries shown on this map are for Census Bureau statistical data collection and tabulation purposes only; their depiction and designation for statistical purposes does not constitute a determination of jurisdictional authority or rights of ownership or entitlement.

Geographic Vintage: 2010 Census (reference date: January 1, 2010)  
 Data Source: U.S. Census Bureau's MAINTICR database (TAB100130)  
 Map Created by Geography Division: December 09, 2010

U.S. DEPARTMENT OF COMMERCE Economics and Statistics Administration U.S. Census Bureau



PARENT SHEET 1  
 Total Sheets: 1  
 Index Sheets: 0  
 Parent Sheets: 1  
 Inset Sheets: 0

NAME: Custer County (017)  
 ENTITY TYPE: County or statistically equivalent entity  
 ST: Montana (30)

2010 SD MAP (PARENT)  
 2011/09/10/01