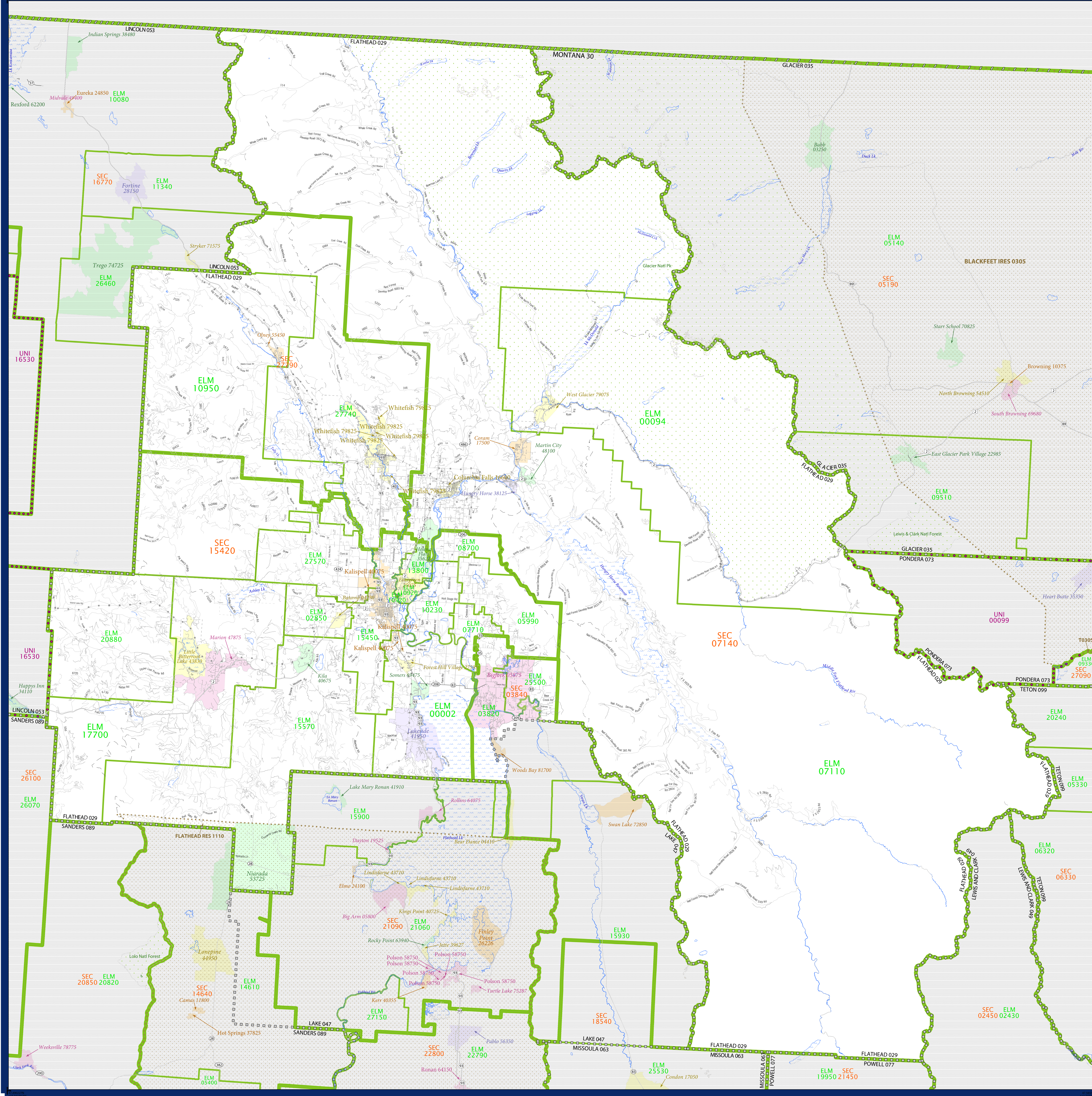


SCHOOL DISTRICT REFERENCE MAP (2010 CENSUS): Flathead County, MT



LEGEND

SYMBOL DESCRIPTION	SYMBOL	SYMBOL	SYMBOL	DESCRIPTION	SYMBOL
Federal American Indian Reservation	[Dotted Pattern]	L'ANSE RES 1880	[Blue Line]	Water Body	[Blue Area]
Off-Reservation Trust Land	[Dotted Pattern]	T1880	[Blue Line]	Swamp or Marsh	[Blue Area]
State American Indian Reservation	[Dotted Pattern]	Tama Res 4125	[Blue Line]	Glacier	[Blue Area]
Alaska Native Regional Corporation	[Dotted Pattern]	NANA ANRC 52120	[Blue Line]	Military	[Blue Area]
State (or statistically equivalent entity)	[Dotted Pattern]	NEW YORK 36	[Blue Line]	National or State Park, Forest, or Reservation Area	[Blue Area]
County (or statistically equivalent entity)	[Dotted Pattern]	ERIE 029	[Blue Line]	Inset Area	[Blue Area]
Minor Civil Division (MCD) ^{1,2}	[Dotted Pattern]	Bristol town 07485	[Blue Line]	Outside Subject Area	[Blue Area]
Consolidated City	[Dotted Pattern]	MILFORD 47500	[Blue Line]		
Incorporated Place ^{1,3}	[Dotted Pattern]	Davis 18100	[Blue Line]		
Census Designated Place (CDP) ¹	[Dotted Pattern]	Incline Village 35100	[Blue Line]		
Unified School District	[Purple Dotted]	UNI 03370	[Blue Line]		
Secondary School District	[Orange Dotted]	SEC 99965	[Blue Line]		
Elementary School District	[Green Dotted]	ELM 02220	[Blue Line]		

Where state, county, and/or MCD boundaries coincide, the map shows the boundary symbol for only the highest-ranking of these boundaries.

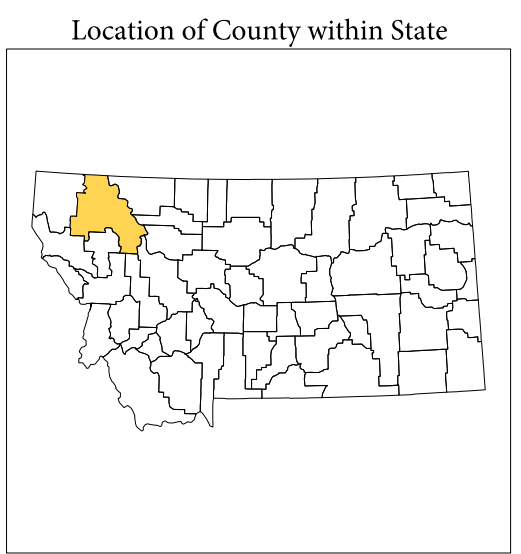
1 A "*" following an MCD name denotes a false MCD. A "*" following a place name indicates that a false MCD exists with the same name and FIPS code as the place; the false MCD label is not shown.

2 MCD boundaries are shown in the following states in which MCDs have functioning governments: Connecticut, Maine, Massachusetts, Michigan, Minnesota, New Hampshire, New Jersey, New York, Pennsylvania, Rhode Island, Vermont, and Wisconsin.

3 Place label color correlates to the place fill color.

SCHOOL DISTRICTS WITHIN COUNTY

TYPE	CODE	NAME
ELM	0002	Somers Elementary School District
ELM	0004	West Glacier Elementary School District
ELM	0262	Smith Valley Elementary School District
ELM	0382	Bigfork Elementary School District
ELM	0590	Coyote Prairie Elementary School District
ELM	0710	Columbia Falls Elementary School District
ELM	0770	Creton Elementary School District
ELM	0870	Deer Park Elementary School District
ELM	1020	Fair Moon Egan Elementary School District
ELM	1090	Evergreen Elementary School District
ELM	1095	Olney-Rosell Elementary School District
ELM	1380	Helena Flats Elementary School District
ELM	1440	Kalispell Elementary School District
ELM	1557	Kila Elementary School District
ELM	1720	Marion Elementary School District
ELM	2080	Pleasant Valley Elementary School District
ELM	2540	Swan River Elementary School District
ELM	2570	West Valley Elementary School District
ELM	2740	Whitefish Elementary School District
SEC	0384	Bigfork High School District
SEC	0714	Columbia Falls High School District
SEC	1540	Flathead High School District
SEC	2790	Whitefish High School District



All legal boundaries and names are as of January 1, 2010. The boundaries shown on this map are for Census Bureau statistical data collection and tabulation purposes only; their depiction and designation for statistical purposes does not constitute a determination of jurisdictional authority or rights of ownership or entitlement.

Geographic: Vintage: 2010 Census (reference date: January 1, 2010)
 Data Source: U.S. Census Bureau's MAINTIGR database (TAB0105130)
 Map Created by Geography Division: December 09, 2010

U.S. DEPARTMENT OF COMMERCE Economics and Statistics Administration U.S. Census Bureau

Projection: Albers Equal Area Conic
 Datum: NAD 83
 Spheroid: GRS 80
 1st Standard Parallel: 45 07 55
 2nd Standard Parallel: 48 13 38
 Central Meridian: -110 02 38
 Latitude of Projection's Origin: 44 21 29
 False Easting: 0
 False Northing: 0

The plotted map scale is 1:23809



PARENT SHEET 1
 Total Sheets: 1
 Index Sheets: 0
 Parent Sheets: 1
 Inset Sheets: 0

NAME: Flathead County (029)
 ENTITY TYPE: County or statistically equivalent entity
 ST: Montana (30)

2010 SD MAP (PARENT)
 2011 10/26/2011