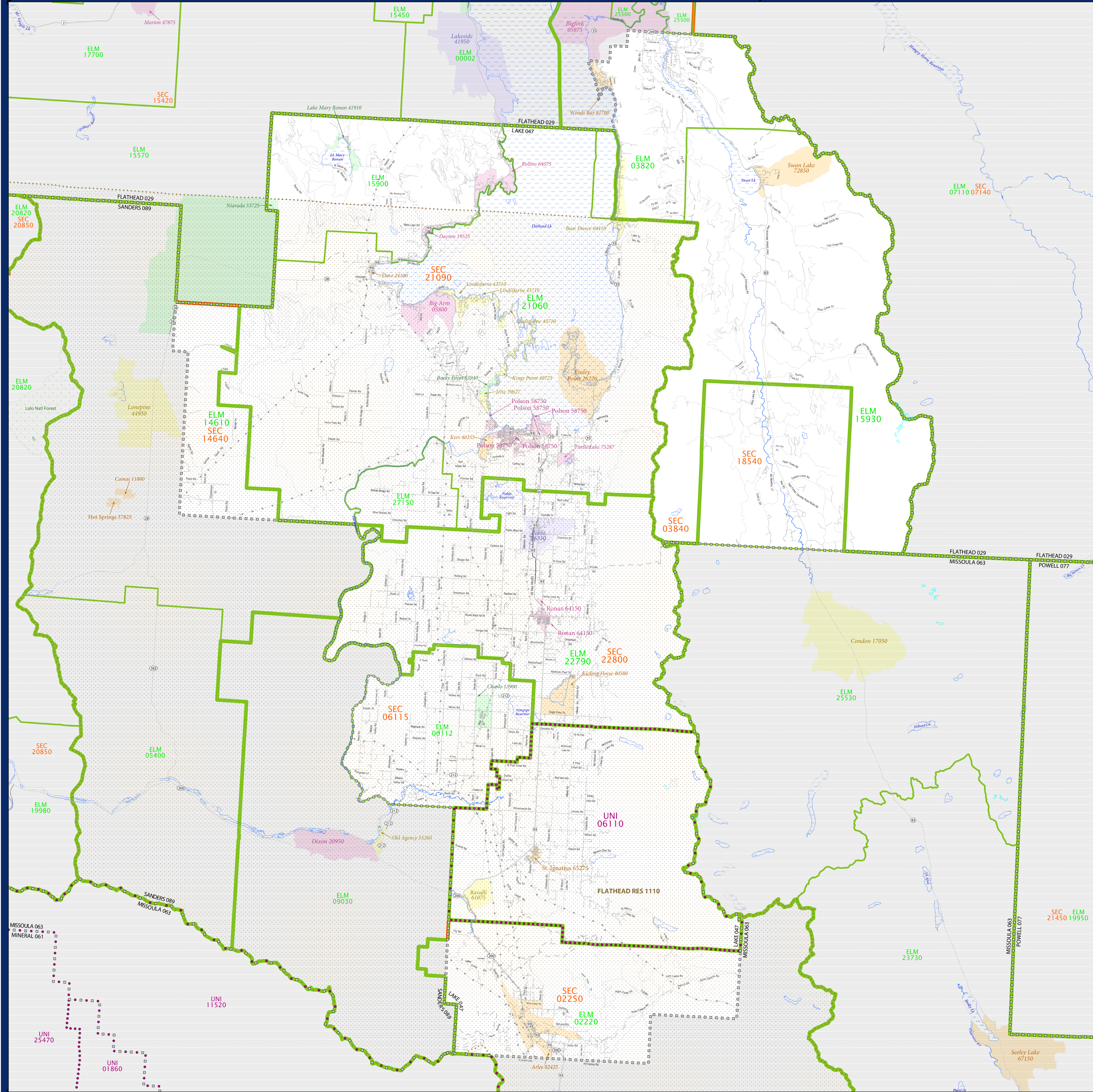


SCHOOL DISTRICT REFERENCE MAP (2010 CENSUS): Lake County, MT



SYMBOL DESCRIPTION		LEGEND	
Federal American Indian Reservation	[Symbol]	L'ANSE RES 1880	[Symbol]
Off-Reservation Trust Land	[Symbol]	T1880	[Symbol]
State American Indian Reservation	[Symbol]	Tama Res 4125	[Symbol]
Alaska Native Regional Corporation	[Symbol]	NANA ANRC 52120	[Symbol]
State (or statistically equivalent entity)	[Symbol]	NEW YORK 36	[Symbol]
County (or statistically equivalent entity)	[Symbol]	ERIE 029	[Symbol]
Minor Civil Division (MCD) ^{1,2}	[Symbol]	Bristol town 07485	[Symbol]
Consolidated City	[Symbol]	MILFORD 47500	[Symbol]
Incorporated Place ³	[Symbol]	Davis 18100	[Symbol]
Census Designated Place (CDP) ³	[Symbol]	Incline Village 35100	[Symbol]
Unified School District	[Symbol]	UNI 03370	[Symbol]
Secondary School District	[Symbol]	SEC 99965	[Symbol]
Elementary School District	[Symbol]	ELM 02220	[Symbol]

DESCRIPTION	SYMBOL	DESCRIPTION	SYMBOL
Interstate	[Symbol]	Water Body	[Symbol]
U.S. Highway	[Symbol]	Swamp or Marsh	[Symbol]
State Highway	[Symbol]	Glacier	[Symbol]
Other Road	[Symbol]	Military	[Symbol]
4WD Trail, Steamer, Alley, Walkway, or Ferry	[Symbol]	National or State Park, Forest, or Reservation Area	[Symbol]
Railroad	[Symbol]	Inset Area	[Symbol]
Pipeline or Power Line	[Symbol]	Outside Subject Area	[Symbol]
Ridge or Fence	[Symbol]		
Property Line	[Symbol]		
Nonvisible Boundary or Feature Not Elsewhere Classified	[Symbol]		

Where state, county, and/or MCD boundaries coincide, the map shows the boundary symbol for only the highest-ranking of these boundaries.

1 A "*" following an MCD name denotes a false MCD. A "*" following a place name indicates that a false MCD exists with the same name and FIPS code as the place; the false MCD label is not shown.

2 MCD boundaries are shown in the following states in which MCDs have functioning governments: Connecticut, Maine, Massachusetts, Michigan, Minnesota, New Hampshire, New Jersey, New York, Pennsylvania, Rhode Island, Vermont, and Wisconsin.

3 Place label color correlates to the place fill color.

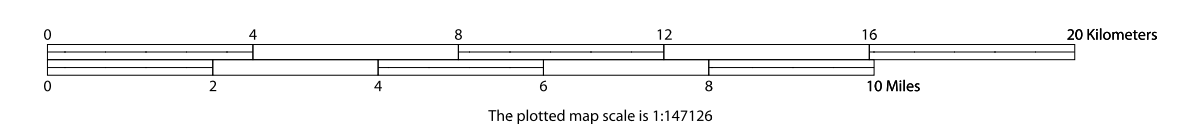
SCHOOL DISTRICTS WITHIN COUNTY	TYPE	CODE	NAME
Arlee Elementary School District	ELM	02220	Arlee Elementary School District
Bigfork Elementary School District	ELM	03820	Bigfork Elementary School District
Charlo Elementary School District	ELM	06112	Charlo Elementary School District
Hot Springs Elementary School District	ELM	14610	Hot Springs Elementary School District
Upper West Shore Elementary School District	ELM	19900	Upper West Shore Elementary School District
Swan Lake-Salmon Elementary School District	ELM	19930	Swan Lake-Salmon Elementary School District
Polson Elementary School District	ELM	21060	Polson Elementary School District
Roman Elementary School District	ELM	22790	Roman Elementary School District
Valley View Elementary School District	ELM	27150	Valley View Elementary School District
Arlee High School District	SEC	02250	Arlee High School District
Bigfork High School District	SEC	03840	Bigfork High School District
Charlo High School District	SEC	06115	Charlo High School District
Hot Springs High School District	SEC	14640	Hot Springs High School District
Missoula High School District	SEC	18540	Missoula High School District
Polson High School District	SEC	21090	Polson High School District
Roman High School District	SEC	22800	Roman High School District
St. Ignace K-12 Schools	UNI	06110	St. Ignace K-12 Schools



All legal boundaries and names are as of January 1, 2010. The boundaries shown on this map are for Census Bureau statistical data collection and tabulation purposes only; their depiction and designation for statistical purposes does not constitute a determination of jurisdictional authority or rights of ownership or entitlement.

Geographic: Vintage: 2010 Census (reference date: January 1, 2010)
 Data Source: U.S. Census Bureau's MAINTIGR database (TAB00130)
 Map Created by Geography Division: December 16, 2010

Projection: Albers Equal Area Conic
 Datum: NAD83
 Spheroid: GRS 80
 1st Standard Parallel: 45 07 55
 2nd Standard Parallel: 48 13 38
 Central Meridian: -110 02 38
 Latitude of Projection's Origin: 44 21 29
 False Easting: 0
 False Northing: 0



USCENSUSBUREAU

PARENT SHEET 1
 Total Sheets: 1
 Index Sheets: 0
 Parent Sheets: 1
 Inset Sheets: 0

NAME: Lake County (047)
 ENTITY TYPE: County or statistically equivalent entity
 ST: Montana (30)