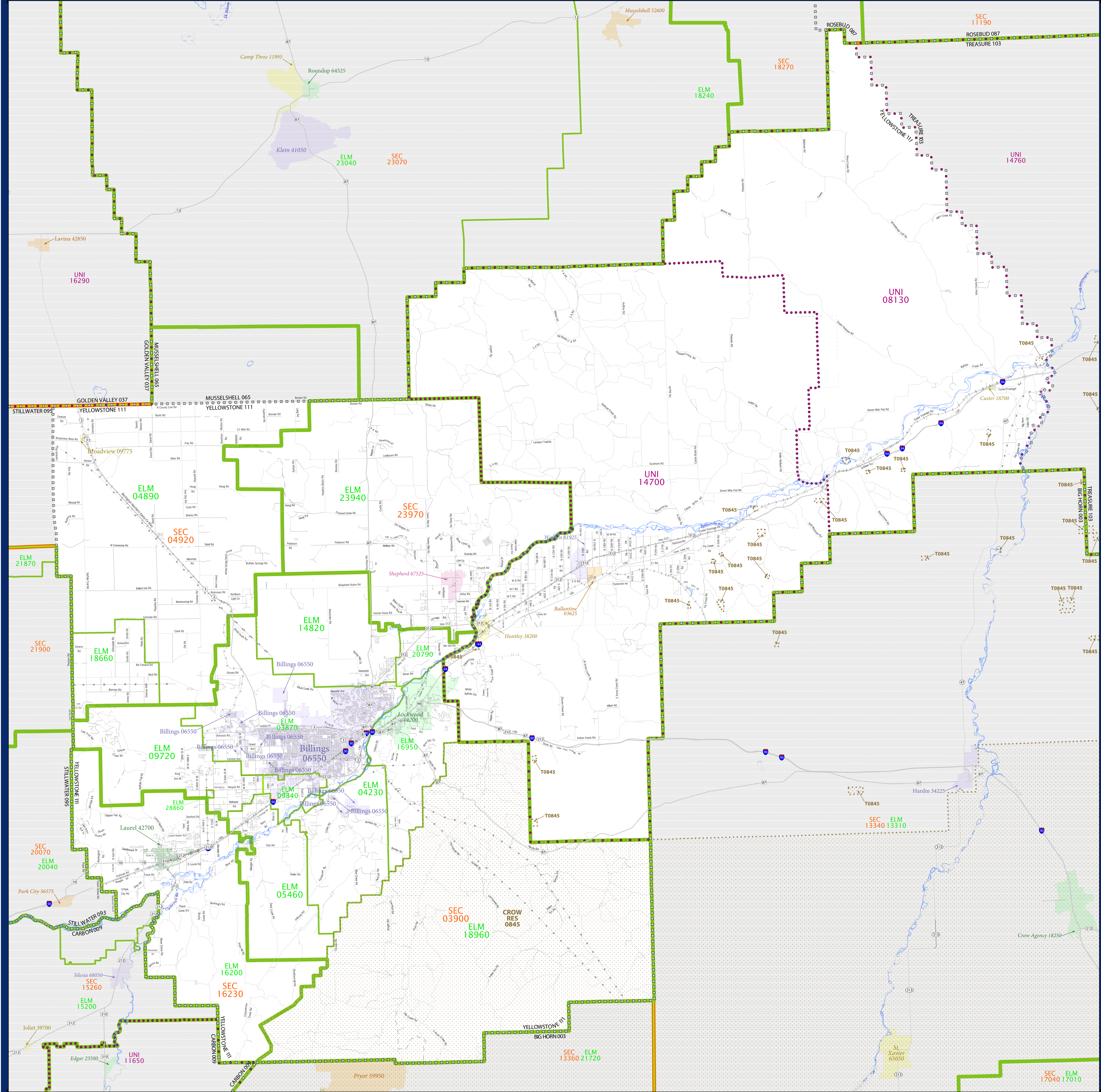


SCHOOL DISTRICT REFERENCE MAP (2010 CENSUS): Yellowstone County, MT



LEGEND

SYMBOL DESCRIPTION	SYMBOL	LABEL STYLE
Federal American Indian Reservation	[Dotted pattern]	L'ANSE RES 1880
Off-Reservation Trust Land	[Dotted pattern]	T1880
State American Indian Reservation	[Dotted pattern]	Tama Res 4125
Alaska Native Regional Corporation	[Dotted pattern]	NANA ANRC 52120
State (or statistically equivalent entity)	[Dotted pattern]	NEW YORK 36
County (or statistically equivalent entity)	[Dotted pattern]	ERIE 029
Minor Civil Division (MCD) ^{1,2}	[Dotted pattern]	Bristol town 07485
Consolidated City	[Dotted pattern]	MILFORD 47500
Incorporated Place ^{1,3}	[Dotted pattern]	Davis 18100
Census Designated Place (CDP) ³	[Dotted pattern]	Incline Village 35100
Unified School District	[Purple outline]	UNI 03370
Secondary School District	[Orange outline]	SEC 99965
Elementary School District	[Green outline]	ELM 02220

DESCRIPTION	SYMBOL	DESCRIPTION	SYMBOL
Interstate	[Blue line with shield]	Water Body	[Blue wavy line]
U.S. Highway	[Black line with shield]	Swamp or Marsh	[Green wavy line]
State Highway	[Black line with shield]	Glacier	[Blue wavy line]
Other Road	[Black line]	Military	[Blue wavy line]
4WD Trail, Stamen, Alley, Walkway, or Ferry	[Black line]	National or State Park, Forest, or Recreation Area	[Green wavy line]
Railroad	[Black line with cross-ticks]	Inset Area	[Grey wavy line]
Pipeline or Power Line	[Black line with cross-ticks]	Outside Subject Area	[Grey wavy line]
Ridge or Fence	[Black line with cross-ticks]		
Property Line	[Black line with cross-ticks]		
Nonvisible Boundary or Feature Not Elsewhere Classified	[Dashed line]		

Where state, county, and/or MCD boundaries coincide, the map shows the boundary symbol for only the highest-ranking of these boundaries.

1 A "*" following an MCD name denotes a false MCD. A "*" following a place name indicates that a false MCD exists with the same name and FIPS code as the place; the false MCD label is not shown.

2 MCD boundaries are shown in the following states in which MCDs have functioning governments: Connecticut, Maine, Massachusetts, Michigan, Minnesota, New Hampshire, New Jersey, New York, Pennsylvania, Rhode Island, Vermont, and Wisconsin.

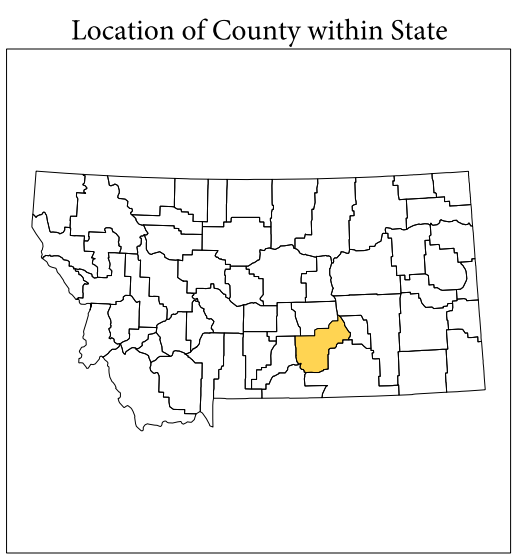
3 Place label color correlates to the place fill color.

OFF-RESERVATION TRUST LAND NAMES

T0845 Crow

SCHOOL DISTRICTS WITHIN COUNTY

TYPE	CODE	NAME
ELM	03170	Billings Elementary School District
ELM	04230	Blue Creek Elementary School District
ELM	04800	Broadview Elementary School District
ELM	05400	Canyon Creek Elementary School District
ELM	09720	Elder Grove Elementary School District
ELM	09840	Elyian Elementary School District
ELM	14820	Independent Elementary School District
ELM	16200	Laurel Elementary School District
ELM	16950	Lockwood Elementary School District
ELM	18660	Molt Elementary School District
ELM	18950	Movin Elementary School District
ELM	20790	Pioneer Elementary School District
ELM	23840	Shepherd Elementary School District
ELM	28600	Yellowstone Academy Elementary School District
SEC	03900	Billings High School District
SEC	04920	Broadview High School District
SEC	16230	Laurel High School District
SEC	23970	Shepherd High School District
UNI	08130	Custer K-12 Schools
UNI	14700	Hurdley Project K-12 Schools



All legal boundaries and names are as of January 1, 2010. The boundaries shown on this map are for Census Bureau statistical data collection and tabulation purposes only; their depiction and designation for statistical purposes does not constitute a determination of jurisdictional authority or rights of ownership or entitlement.

Geographic Vintage: 2010 Census (reference date: January 1, 2010)
 Data Source: U.S. Census Bureau's MAI/TIGER database (TAB100130)
 Map Created by Geography Division: December 09, 2010

U.S. DEPARTMENT OF COMMERCE Economics and Statistics Administration U.S. Census Bureau

Projection: Albers Equal Area Conic
 Datum: NAD 83
 Spheroid: GRS 80
 1st Standard Parallel: 45 07 55
 2nd Standard Parallel: 48 13 38
 Central Meridian: -110 02 38
 Latitude of Projection's Origin: 44 21 29
 False Easting: 0
 False Northing: 0

Scale: 1:100,000
 0 5 10 15 20 25 Kilometers
 0 1 2 3 4 Miles

U.S. CENSUS BUREAU