

SCHOOL DISTRICT REFERENCE MAP (2010 CENSUS): Boyd County, NE

LEGEND	
SYMBOL DESCRIPTION	SYMBOL
Federal American Indian Reservation	
Off-Reservation Trust Land	
State American Indian Reservation	
Alaska Native Regional Corporation	
State (or statistically equivalent entity)	
County (or statistically equivalent entity)	
Minor Civil Division (MCD) ^{1,2}	
Consolidated City	
Incorporated Place ³	
Census Designated Place (CDP) ³	
Unified School District	
Secondary School District	
Elementary School District	

DESCRIPTION	SYMBOL	DESCRIPTION	SYMBOL
Interstate		Water Body	
U.S. Highway		Swamp or Marsh	
State Highway		Glacier	
Other Road		Military	
4WD Trail, Steamer, Alley, Walkway, or Ferry		National or State Park, Forest, or Recreation Area	
Railroad		Inset Area	
Pipeline or Power Line		Outside Subject Area	
Ridge or Fence			
Property Line			
Nonvisible Boundary or Feature Not Elsewhere Classified			

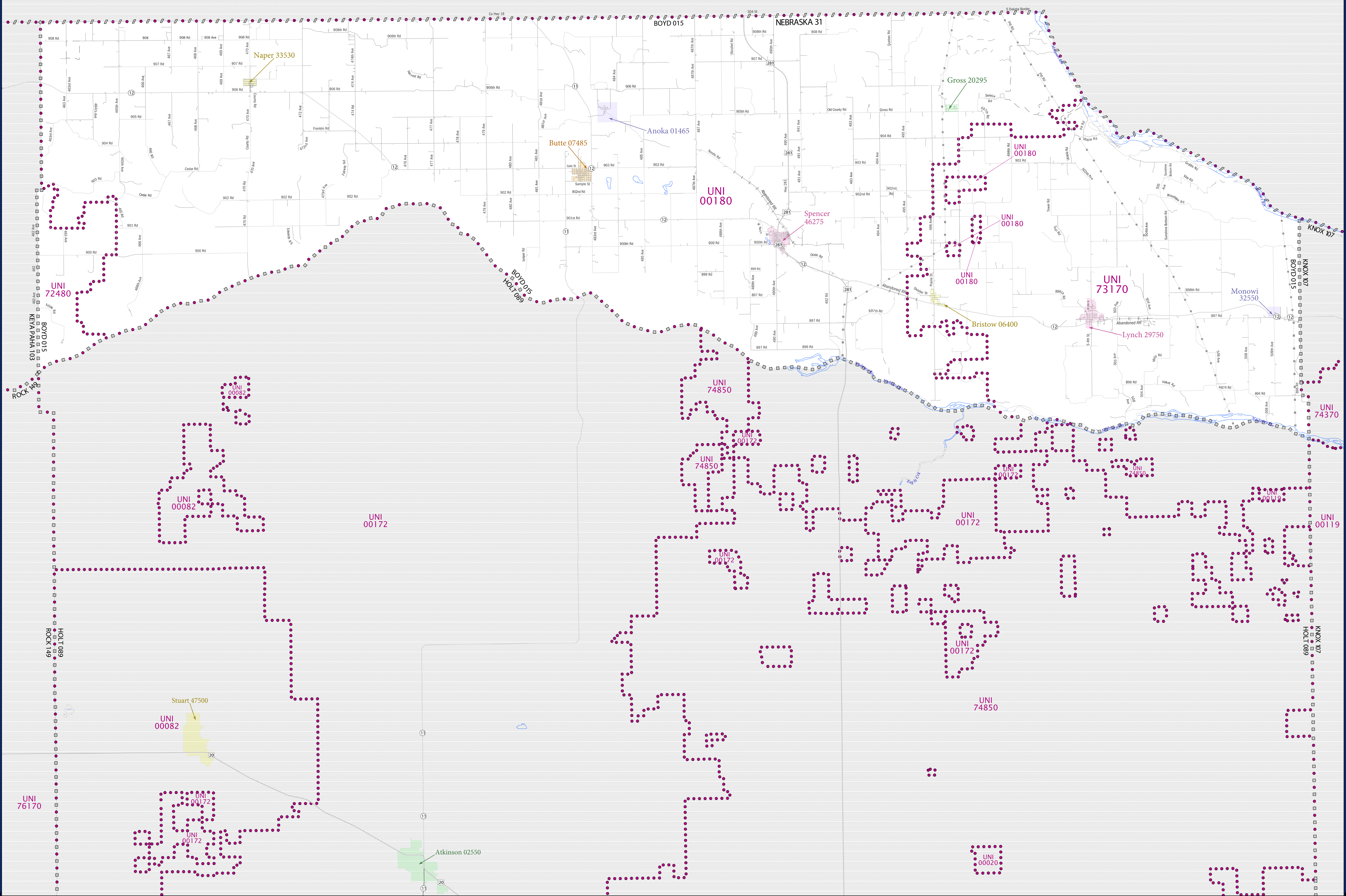
Where state, county, and/or MCD boundaries coincide, the map shows the boundary symbol for only the highest-ranking of these boundaries.

1 A " " following an MCD name denotes a false MCD. A " " following a place name indicates that a false MCD exists with the same name and FIPS code as the place; the false MCD label is not shown.

2 MCD boundaries are shown in the following states in which MCDs have functioning governments: Connecticut, Maine, Massachusetts, Michigan, Minnesota, New Hampshire, New Jersey, New York, Pennsylvania, Rhode Island, Vermont, and Wisconsin.

3 Place label color correlates to the place fill color.

SCHOOL DISTRICTS WITHIN COUNTY		
TYPE	CODE	NAME
UNI	00180	West Boyd Public Schools
UNI	72480	Keya Paha County Schools
UNI	73170	Lynch Public Schools



All legal boundaries and names are as of January 1, 2010. The boundaries shown on this map are for Census Bureau's statistical data collection and tabulation purposes only; their depiction and designation for statistical purposes does not constitute a determination of jurisdictional authority or rights of ownership or entitlement.

Geographic Vintage: 2010 Census (reference date: January 1, 2010)
 Data Source: U.S. Census Bureau's MA7/TIGER database (TAB100331)
 Map Created by Geography Division: December 09, 2010

U.S. DEPARTMENT OF COMMERCE Economics and Statistics Administration U.S. Census Bureau

Projection: Albers Equal Area Conic
 Datum: NAD83
 Spheroid: GRS 80
 1st Standard Parallel: 40 30 01
 2nd Standard Parallel: 42 30 05
 Central Meridian: 99 40 49
 Latitude of Projection's Origin: 40 00 00
 False Easting: 0
 False Northing: 0

The plotted map scale is 1:112,962

U.S. DEPARTMENT OF COMMERCE Economics and Statistics Administration U.S. Census Bureau



PARENT SHEET 1
 Total Sheets: 1
 Index Sheets: 0
 Parent Sheets: 1
 Inset Sheets: 0

NAME: Boyd County (015)
 ENTITY TYPE: County or statistically equivalent entity
 ST: Nebraska (31)

2010 SD MAP (PARENT) 20101015001

