

# SCHOOL DISTRICT REFERENCE MAP (2010 CENSUS): Cass County, NE



LEGEND		
SYMBOL DESCRIPTION	SYMBOL	LABEL STYLE
Federal American Indian Reservation	[Pattern]	L'ANSE RES 1880
Off-Reservation Trust Land	[Pattern]	T1880
State American Indian Reservation	[Pattern]	Tama Res 4125
Alaska Native Regional Corporation	[Pattern]	NANA ANRC 52120
State (or statistically equivalent entity)	[Pattern]	NEW YORK 36
County (or statistically equivalent entity)	[Pattern]	ERIE 029
Minor Civil Division (MCD) <sup>1,2</sup>	[Pattern]	Bristol town 07485
Consolidated City	[Pattern]	MILFORD 47500
Incorporated Place <sup>1,3</sup>	[Pattern]	Davis 18100
Census Designated Place (CDP) <sup>3</sup>	[Pattern]	Incline Village 35100
Unified School District	[Purple Dotted]	UNI 03370
Secondary School District	[Orange Solid]	SEC 99965
Elementary School District	[Green Solid]	ELM 02220

DESCRIPTION	SYMBOL	DESCRIPTION	SYMBOL
Interstate	[Blue Line]	Water Body	[Blue Area]
U.S. Highway	[Black Line]	Swamp or Marsh	[Green Area]
State Highway	[Grey Line]	Glacier	[Blue Area]
Other Road	[Thin Line]	Military	[Green Area]
4WD Trail, Stairway, Alley, Walkway, or Ferry	[Thin Line]	National or State Park, Forest, or Recreation Area	[Green Area]
Railroad	[Black Line]	Inset Area	[Grey Area]
Pipeline or Power Line	[Thin Line]	Outside Subject Area	[Grey Area]
Ridge or Fence	[Thin Line]		
Property Line	[Thin Line]		
Nonvisible Boundary or Feature Not Elsewhere Classified	[Thin Line]		

Where state, county, and/or MCD boundaries coincide, the map shows the boundary symbol for only the highest-ranking of these boundaries.

1 A '\*' following an MCD name denotes a false MCD. A '\*' following a place name indicates that a false MCD exists with the same name and FIPS code as the place; the false MCD label is not shown.

2 MCD boundaries are shown in the following states in which MCDs have functioning governments: Connecticut, Maine, Massachusetts, Michigan, Minnesota, New Hampshire, New Jersey, New York, Pennsylvania, Rhode Island, Vermont, and Wisconsin.

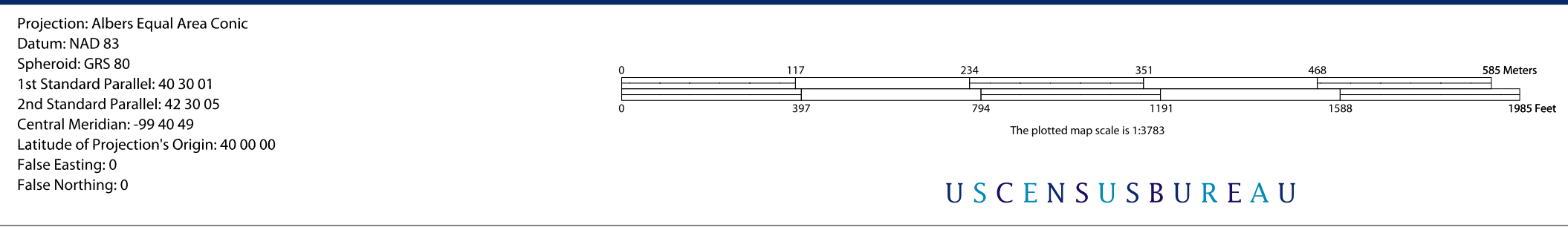
3 Place label color correlates to the place fill color.

SCHOOL DISTRICTS WITHIN COUNTY		
TYPE	CODE	NAME
UNI	74160	Nebraska City Public Schools
UNI	74200	Conestoga Public Schools

All legal boundaries and names are as of January 1, 2010. The boundaries shown on this map are for Census Bureau statistical data collection and tabulation purposes only; their depiction and designation for statistical purposes does not constitute a determination of jurisdictional authority or rights of ownership or entitlement.

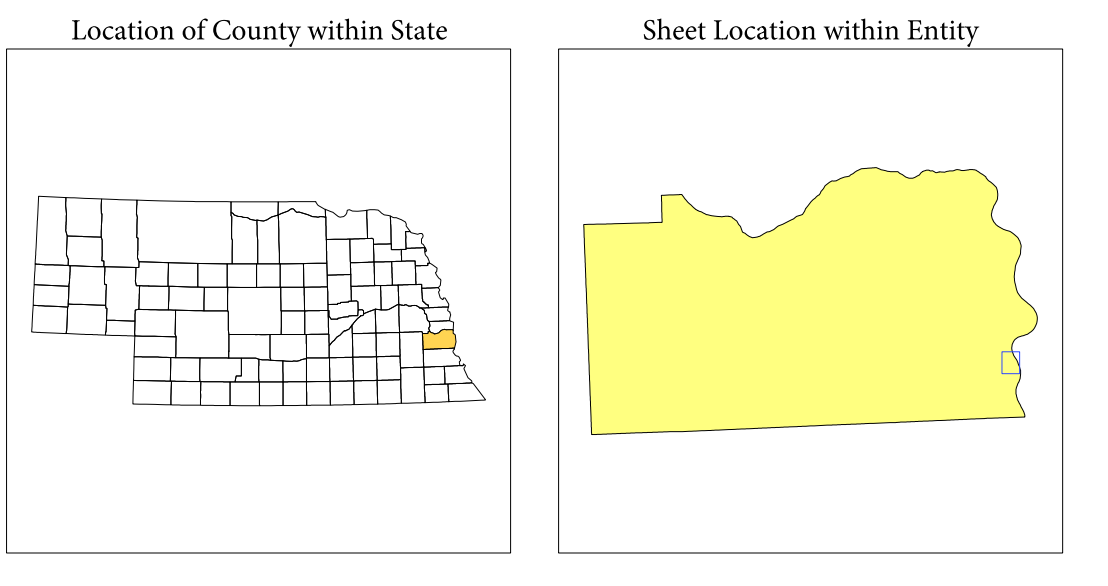
Geographic Vintage: 2010 Census (reference date: January 1, 2010)  
 Data Source: U.S. Census Bureau's MAINTIGER database (TAB100311)  
 Map Created by Geography Division: January 18, 2011

U.S. DEPARTMENT OF COMMERCE Economics and Statistics Administration U.S. Census Bureau



USCENSUSBUREAU

INSET SHEET A1  
 Total Sheets: 2  
 Index Sheets: 0  
 Parent Sheets: 1  
 Inset Sheets: 1



NAME: Cass County (025)  
 ENTITY TYPE: County or statistically equivalent entity  
 ST: Nebraska (31)

2010 SD MAP (NET)  
 2010020401