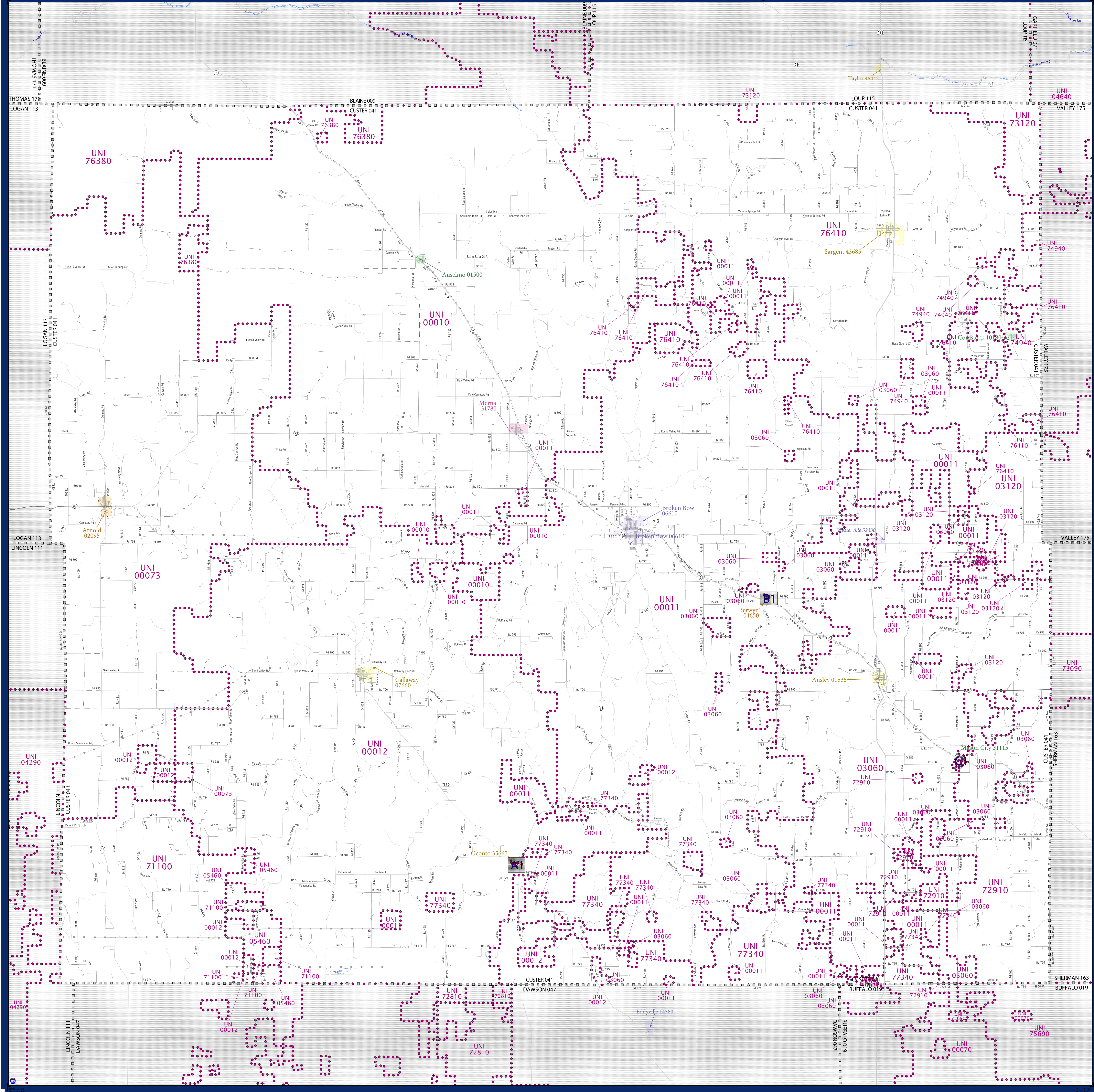


SCHOOL DISTRICT REFERENCE MAP (2010 CENSUS): Custer County, NE



SYMBOL DESCRIPTION		LEGEND	
	Federal American Indian Reservation		L'ANSE RES 1880
	Off-Reservation Trust Land		T1880
	State American Indian Reservation		Tama Res 4125
	Alaska Native Regional Corporation		NANA ANRC 52120
	State (or statistically equivalent entity)		NEW YORK 36
	County (or statistically equivalent entity)		ERIE 029
	Minor Civil Division (MCD) ^{1,2}		Bristol town 07485
	Consolidated City		MILFORD 47500
	Incorporated Place ³		Davis 18100
	Census Designated Place (CDP) ³		Incline Village 35100
	Unified School District		UNI 03370
	Secondary School District		SEC 99955
	Elementary School District		ELM 02220

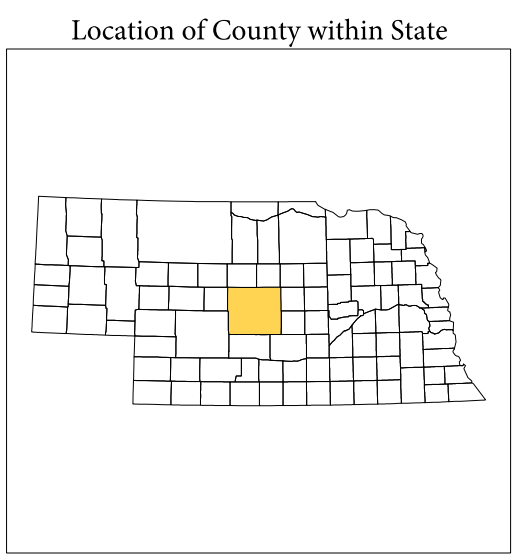
Where state, county, and/or MCD boundaries coincide, the map shows the boundary symbol for only the highest-ranking of these boundaries.

1 A "*" following an MCD name denotes a false MCD. A "*" following a place name indicates that a false MCD exists with the same name and FIPS code as the place; the false MCD label is not shown.

2 MCD boundaries are shown in the following states in which MCDs have functioning governments: Connecticut, Maine, Massachusetts, Michigan, Minnesota, New Hampshire, New Jersey, New York, Pennsylvania, Rhode Island, Vermont, and Wisconsin.

3 Place label color correlates to the place fill color.

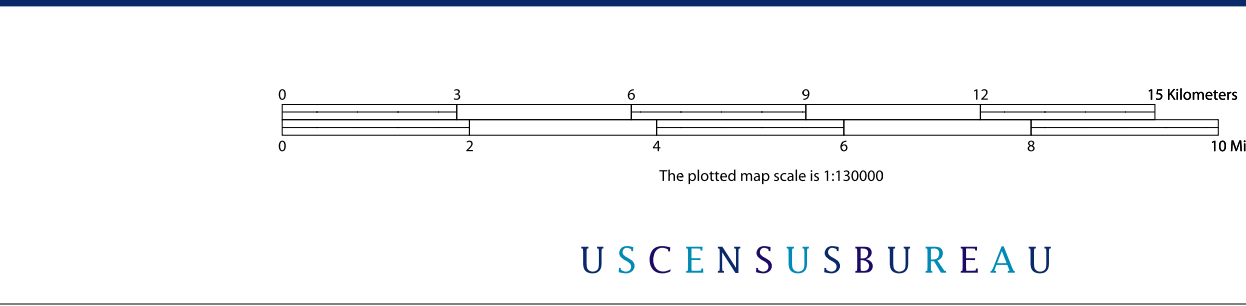
SCHOOL DISTRICTS WITHIN COUNTY
UNI 00011 Arnold-Merna Public Schools
UNI 00012 Broken Bow Public Schools
UNI 00073 Callaway Public Schools
UNI 03060 Ansley Public Schools
UNI 03120 Arcadia Public Schools
UNI 05460 Coast City Schools
UNI 71100 Gothenburg Public Schools
UNI 72910 Lincoln Public Schools
UNI 73120 Loup County Public Schools
UNI 76980 Owl Public Schools
UNI 76380 Sargent Public Schools
UNI 76410 Sargent Public Schools
UNI 77340 Sumner Eddyville-Miller Schools



All legal boundaries and names are as of January 1, 2010. The boundaries shown on this map are for Census Bureau statistical data collection and tabulation purposes only; their depiction and designation for statistical purposes does not constitute a determination of jurisdictional authority or rights of ownership or entitlement.

Geographic Vintage: 2010 Census (reference date: January 1, 2010)
 Data Source: U.S. Census Bureau's MAINTIGR database (TAB100131)
 Map Created by Geography Division: January 18, 2011

Projection: Albers Equal Area Conic
 Datum: NAD83
 Spheroid: GRS 80
 1st Standard Parallel: 40 30 05
 2nd Standard Parallel: 42 30 05
 Central Meridian: 99 40 49
 Latitude of Projection's Origin: 40 00 00
 False Easting: 0
 False Northing: 0



PARENT SHEET 1
 Total Sheets: 4
 Index Sheets: 0
 Parent Sheets: 1
 Inset Sheets: 3

NAME: Custer County (041)
 ENTITY TYPE: County or statistically equivalent entity
 ST: Nebraska (31)