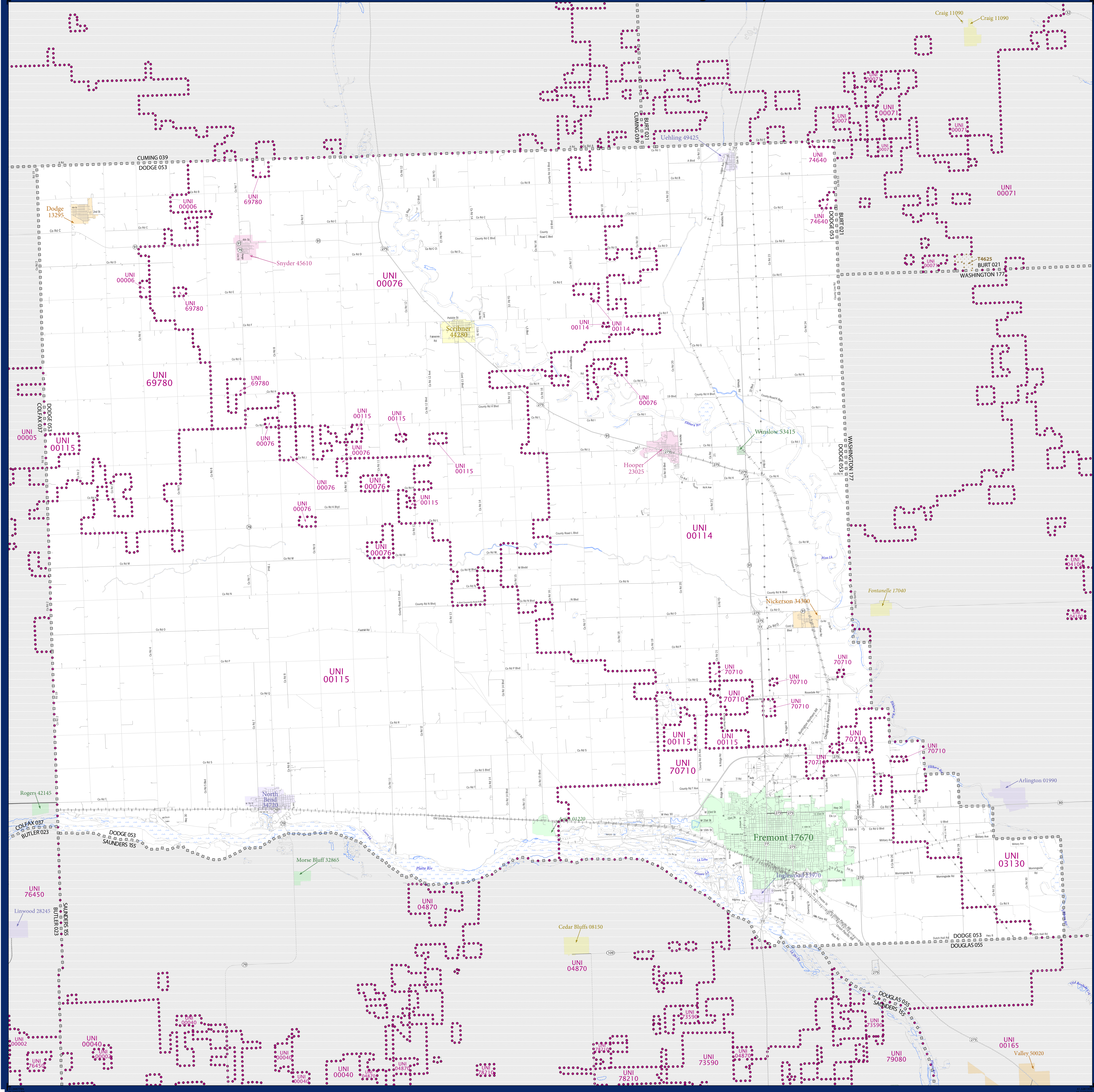


# SCHOOL DISTRICT REFERENCE MAP (2010 CENSUS): Dodge County, NE



### LEGEND

SYMBOL DESCRIPTION	SYMBOL	SYMBOL DESCRIPTION	SYMBOL
Federal American Indian Reservation	[Symbol]	Water Body	[Symbol]
Off-Reservation Trust Land	[Symbol]	Swamp or Marsh	[Symbol]
State American Indian Reservation	[Symbol]	Glacier	[Symbol]
Alaska Native Regional Corporation	[Symbol]	Military	[Symbol]
State (or statistically equivalent entity)	[Symbol]	National or State Park, Forest, or Recreation Area	[Symbol]
County (or statistically equivalent entity)	[Symbol]	Inset Area	[Symbol]
Minor Civil Division (MCD) <sup>1,2</sup>	[Symbol]	Outside Subject Area	[Symbol]
Consolidated City	[Symbol]		
Incorporated Place <sup>1,3</sup>	[Symbol]		
Census Designated Place (CDP) <sup>3</sup>	[Symbol]		
Unified School District	[Symbol]		
Secondary School District	[Symbol]		
Elementary School District	[Symbol]		

Where state, county, and/or MCD boundaries coincide, the map shows the boundary symbol for only the highest-ranking of these boundaries.

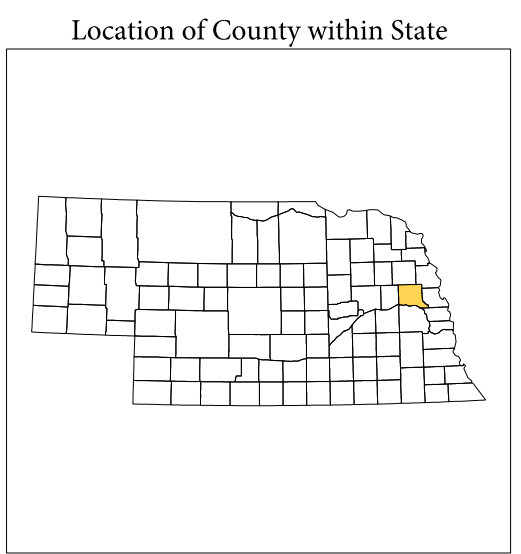
1 A "\*" following an MCD name denotes a false MCD. A "\*" following a place name indicates that a false MCD exists with the same name and FIPS code as the place; the false MCD label is not shown.

2 MCD boundaries are shown in the following states in which MCDs have functioning governments: Connecticut, Maine, Massachusetts, Michigan, Minnesota, New Hampshire, New Jersey, New York, Pennsylvania, Rhode Island, Vermont, and Wisconsin.

3 Place label color correlates to the place fill color.

### SCHOOL DISTRICTS WITHIN COUNTY

TYPE	CODE	NAME
UNI	00006	West Point Public Schools
UNI	00076	Scribner-Snyder Community Schools
UNI	00114	Logan View Public Schools
UNI	00115	North Bend Central Public Schools
UNI	03130	Arlington Public Schools
UNI	69780	Dodge Public Schools
UNI	70710	Fremont Public Schools
UNI	74640	Oakland Craig Public Schools



All legal boundaries and names are as of January 1, 2010. The boundaries shown on this map are for Census Bureau's statistical data collection and tabulation purposes only; their depiction and designation for statistical purposes does not constitute a determination of jurisdictional authority or rights of ownership or entitlement.

Geographic: Vintage: 2010 Census (reference date: January 1, 2010)  
 Data Source: U.S. Census Bureau's MAINTIGR database (TAB100313)  
 Map Created by Geography Division: December 09, 2010

U.S. DEPARTMENT OF COMMERCE Economics and Statistics Administration U.S. Census Bureau

Projection: Albers Equal Area Conic  
 Datum: NAD83  
 Spheroid: GRS 80  
 1st Standard Parallel: 40 30 01  
 2nd Standard Parallel: 42 30 05  
 Central Meridian: 99 40 49  
 Latitude of Projection's Origin: 40 00 00  
 False Easting: 0  
 False Northing: 0

The plotted map scale is 1:7405

0 2 4 6 8 10 Kilometers

0 2 4 6 8 10 Miles

U.S. CENSUS BUREAU

PARENT SHEET 1

Total Sheets: 1  
 Index Sheets: 0  
 Parent Sheets: 1  
 Inset Sheets: 0

NAME: Dodge County (053)  
 ENTITY TYPE: County or statistically equivalent entity  
 ST: Nebraska (31)

2010 SD MAP (PARENT)  
 20101053001