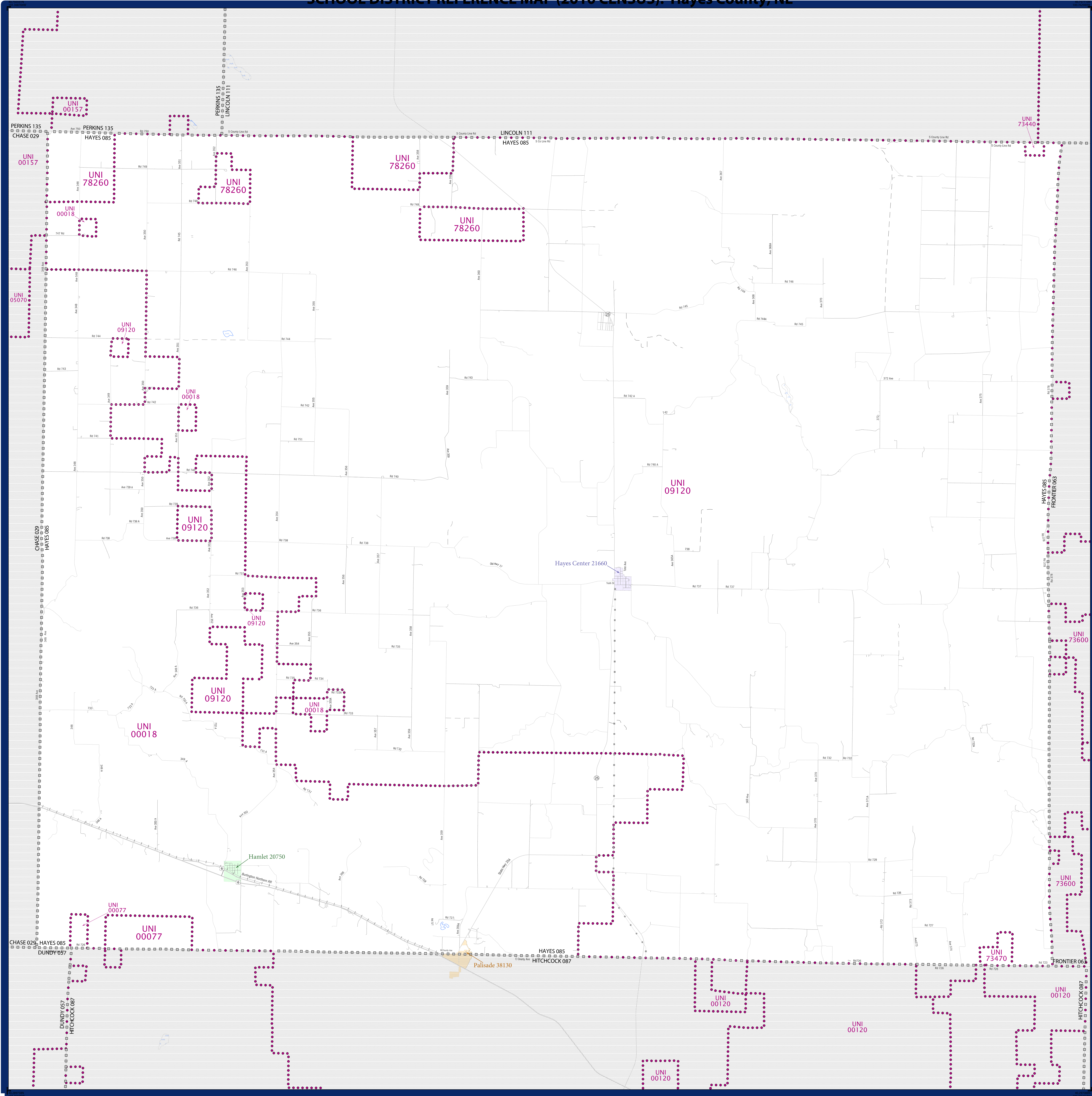


SCHOOL DISTRICT REFERENCE MAP (2010 CENSUS): Hayes County, NE



LEGEND

| SYMBOL DESCRIPTION | SYMBOL | LABEL STYLE |
|---|----------|-----------------------|
| Federal American Indian Reservation | [Symbol] | L'ANSE RES 1880 |
| Off-Reservation Trust Land | [Symbol] | T1880 |
| State American Indian Reservation | [Symbol] | Tama Res 4125 |
| Alaska Native Regional Corporation | [Symbol] | NANA ANRC 52120 |
| State (or statistically equivalent entity) | [Symbol] | NEW YORK 36 |
| County (or statistically equivalent entity) | [Symbol] | ERIE 029 |
| Minor Civil Division (MCD) ^{1,2} | [Symbol] | Bristol town 07485 |
| Consolidated City | [Symbol] | MILFORD 47500 |
| Incorporated Place ^{1,3} | [Symbol] | Davis 18100 |
| Census Designated Place (CDP) ³ | [Symbol] | Incline Village 35100 |
| Unified School District | [Symbol] | UNI 03370 |
| Secondary School District | [Symbol] | SEC 99965 |
| Elementary School District | [Symbol] | ELM 02220 |

| DESCRIPTION | SYMBOL | DESCRIPTION | SYMBOL |
|---|----------|--|----------|
| Interstate | [Symbol] | Water Body | [Symbol] |
| U.S. Highway | [Symbol] | Swamp or Marsh | [Symbol] |
| State Highway | [Symbol] | Glacier | [Symbol] |
| Other Road | [Symbol] | Military | [Symbol] |
| 4WD Trail, Stamen, Alley, Walkway, or Ferry | [Symbol] | National or State Park, Forest, or Recreation Area | [Symbol] |
| Railroad | [Symbol] | Inset Area | [Symbol] |
| Pipeline or Power Line | [Symbol] | Outside Subject Area | [Symbol] |
| Ridge or Fence | [Symbol] | | |
| Property Line | [Symbol] | | |
| Nonvisible Boundary or Feature Not Elsewhere Classified | [Symbol] | | |

Where state, county, and/or MCD boundaries coincide, the map shows the boundary symbol for only the highest-ranking of these boundaries.

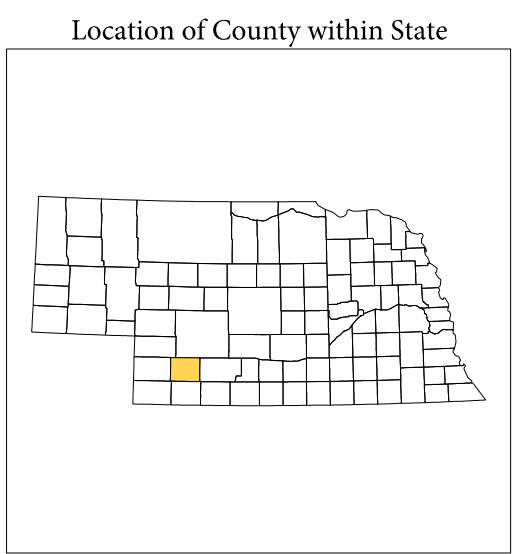
1 A "*" following an MCD name denotes a false MCD. A "*" following a place name indicates that a false MCD exists with the same name and FIPS code as the place; the false MCD label is not shown.

2 MCD boundaries are shown in the following states in which MCDs have functioning governments: Connecticut, Maine, Massachusetts, Michigan, Minnesota, New Hampshire, New Jersey, New York, Pennsylvania, Rhode Island, Vermont, and Wisconsin.

3 Place label color correlates to the place fill color.

SCHOOL DISTRICTS WITHIN COUNTY

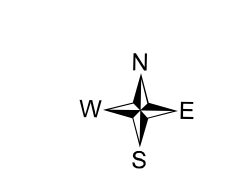
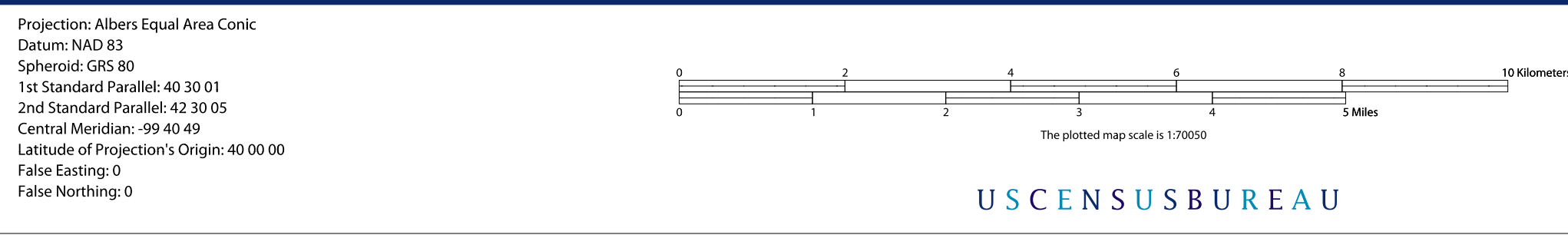
| TYPE | CODE | NAME |
|------|-------|-------------------------------------|
| UNI | 00017 | Waverly-Palisade Public Schools |
| UNI | 00077 | Dundy County Public Schools |
| UNI | 09120 | Hayes Center Public Schools |
| UNI | 73440 | Maywood Public Schools |
| UNI | 73470 | McCook Public Schools |
| UNI | 78260 | Wallace Public School District 65 R |



All legal boundaries and names are as of January 1, 2010. The boundaries shown on this map are for Census Bureau statistical data collection and tabulation purposes only; their depiction and designation for statistical purposes does not constitute a determination of jurisdictional authority or rights of ownership or entitlement.

Geographic: Vintage: 2010 Census (reference date: January 1, 2010)
 Data Source: U.S. Census Bureau's MAINTIGR database (TAB100131)
 Map Created by Geography Division: December 09, 2010

U.S. DEPARTMENT OF COMMERCE Economics and Statistics Administration U.S. Census Bureau



PARENT SHEET 1
 Total Sheets: 1
 Index Sheets: 0
 Parent Sheets: 0
 Inset Sheets: 0

NAME: Hayes County (085)
 ENTITY TYPE: County or statistically equivalent entity
 ST: Nebraska (31)