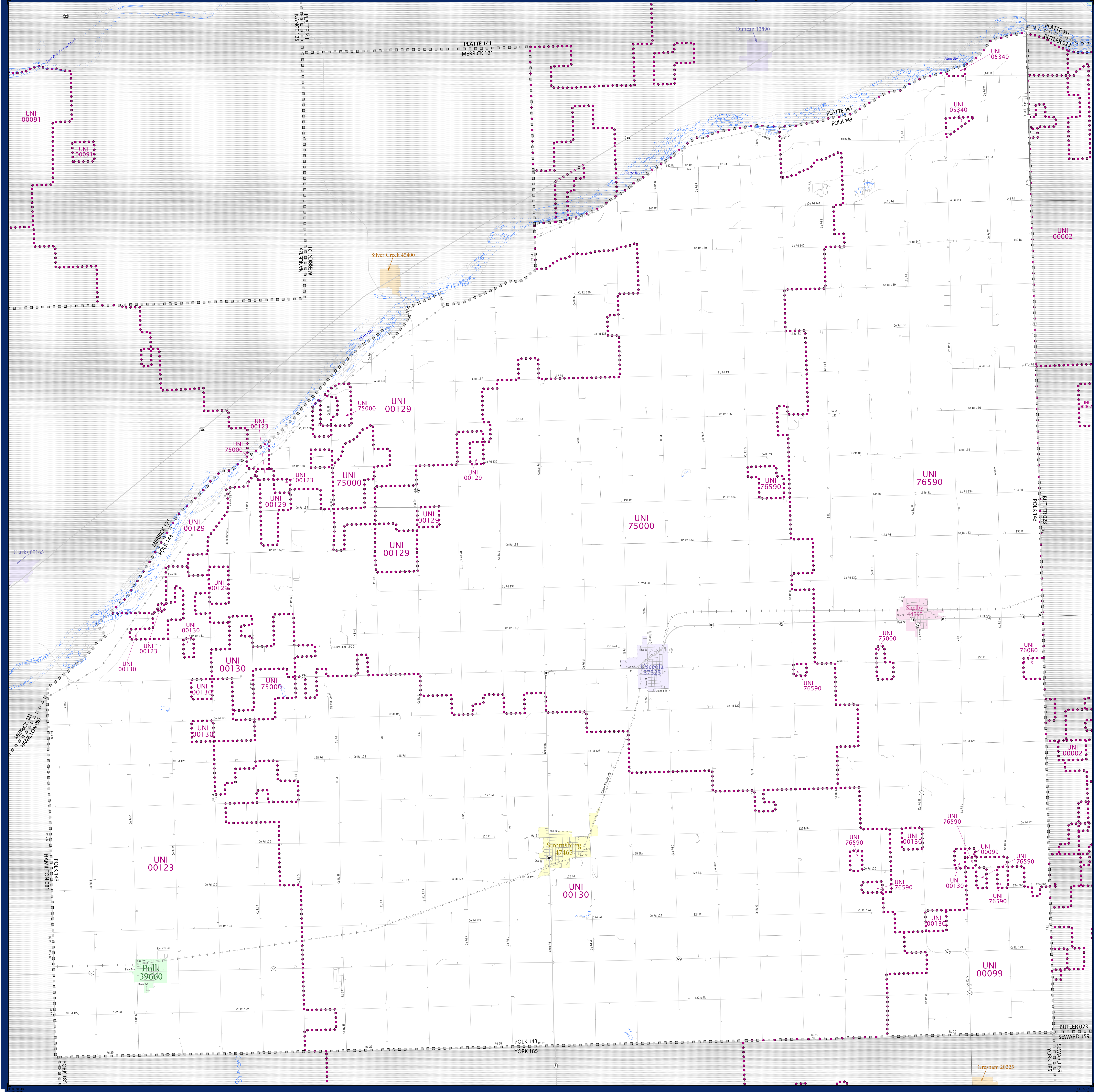


SCHOOL DISTRICT REFERENCE MAP (2010 CENSUS): Polk County, NE



LEGEND

SYMBOL DESCRIPTION	SYMBOL	SYMBOL	SYMBOL
Federal American Indian Reservation	[Dotted Pattern]	L'ANSE RES 1880	[Dotted Pattern]
Off-Reservation Trust Land	[Dotted Pattern]	T1880	[Dotted Pattern]
State American Indian Reservation	[Dotted Pattern]	Tama Res 4125	[Dotted Pattern]
Alaska Native Regional Corporation	[Dotted Pattern]	NANA ANRC 52120	[Dotted Pattern]
State (or statistically equivalent entity)	[Dotted Pattern]	NEW YORK 36	[Dotted Pattern]
County (or statistically equivalent entity)	[Dotted Pattern]	ERIE 029	[Dotted Pattern]
Minor Civil Division (MCD) ^{1,2}	[Dotted Pattern]	Bristol town 07485	[Dotted Pattern]
Consolidated City	[Dotted Pattern]	MILFORD 47500	[Dotted Pattern]
Incorporated Place ^{1,3}	[Dotted Pattern]	Davis 18100	[Dotted Pattern]
Census Designated Place (CDP) ³	[Dotted Pattern]	Incline Village 35100	[Dotted Pattern]
Unified School District	[Purple Dotted Line]	UNI 03370	[Purple Dotted Line]
Secondary School District	[Orange Dotted Line]	SEC 99965	[Orange Dotted Line]
Elementary School District	[Green Dotted Line]	ELM 02220	[Green Dotted Line]

DESCRIPTION	SYMBOL	DESCRIPTION	SYMBOL
Interstate	[Blue Line with Red/Blue Dashed]	Water Body	[Blue Area]
U.S. Highway	[Black Line with Red/Blue Dashed]	Swamp or Marsh	[Green Area]
State Highway	[Black Line with Red/Blue Dashed]	Other Road	[Black Line]
Other Road	[Black Line]	4WD Trail, Stamen, Alley, Walkway, or Ferry	[Black Line with Dashed]
Railroad	[Black Line with Cross-Ticks]	Pipeline or Power Line	[Black Line with Dashed]
Ridge or Fence	[Black Line with Dashed]	Property Line	[Black Line with Dashed]
Nonvisible Boundary or Feature Not Elsewhere Classified	[Black Line with Dashed]		

DESCRIPTION	SYMBOL
Plusieur Lake	[Blue Area]
Okfuskee Swamp	[Green Area]
Bering Glacier	[Blue Area]
Fort Belvoir	[Blue Area]
Yosemite NP	[Blue Area]
A	[Blue Area]
Outside Subject Area	[Grey Area]

Where state, county, and/or MCD boundaries coincide, the map shows the boundary symbol for only the highest-ranking of these boundaries.

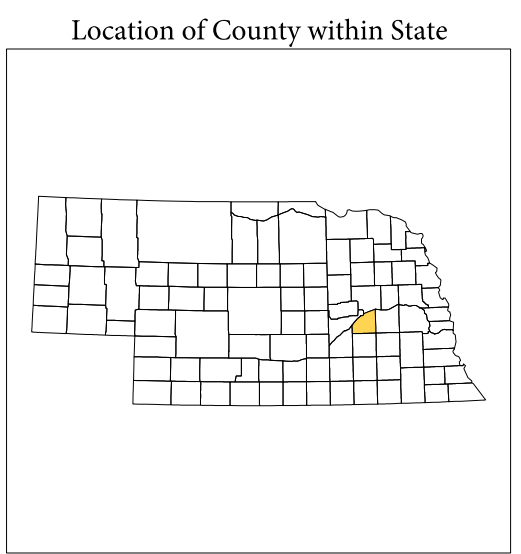
1 A "*" following an MCD name denotes a false MCD. A "*" following a place name indicates that a false MCD exists with the same name and FIPS code as the place; the false MCD label is not shown.

2 MCD boundaries are shown in the following states in which MCDs have functioning governments: Connecticut, Maine, Massachusetts, Michigan, Minnesota, New Hampshire, New Jersey, New York, Pennsylvania, Rhode Island, Vermont, and Wisconsin.

3 Place label code correlates to the place fill color.

SCHOOL DISTRICTS WITHIN COUNTY

TYPE	CODE	NAME
UNI	00091	Centennial Public Schools
UNI	00123	High Plains Community Schools
UNI	00129	Twin Rivers Public Schools
UNI	00130	Cross County Community Schools
UNI	00131	Columbus Public Schools
UNI	75000	Osceola Public Schools
UNI	76590	Rising City Public Schools
UNI	76590	Shelby Public Schools



All legal boundaries and names are as of January 1, 2010. The boundaries shown on this map are for Census Bureau statistical data collection and tabulation purposes only; their depiction and designation for statistical purposes does not constitute a determination of jurisdictional authority or rights of ownership or entitlement.

Geographic: Vintage: 2010 Census (reference date: January 1, 2010)
 Data Source: U.S. Census Bureau's MAINTIGER database (TAB100131)
 Map Created by Geography Division: December 09, 2010

U.S. DEPARTMENT OF COMMERCE Economics and Statistics Administration U.S. Census Bureau

Projection: Albers Equal Area Conic
 Datum: NAD83
 Spheroid: GRS 80
 1st Standard Parallel: 40 30 01
 2nd Standard Parallel: 42 30 05
 Central Meridian: 99 40 49
 Latitude of Projection's Origin: 40 00 00
 False Easting: 0
 False Northing: 0

The plotted map scale is 1:51467

U.S. Census Bureau

PARENT SHEET 1
 Total Sheets: 1
 Index Sheets: 0
 Parent Sheets: 1
 Inset Sheets: 0

NAME: Polk County (143)
 ENTITY TYPE: County or statistically equivalent entity
 ST: Nebraska (31)

2010 SD MAP (PARENT)
 20101143001