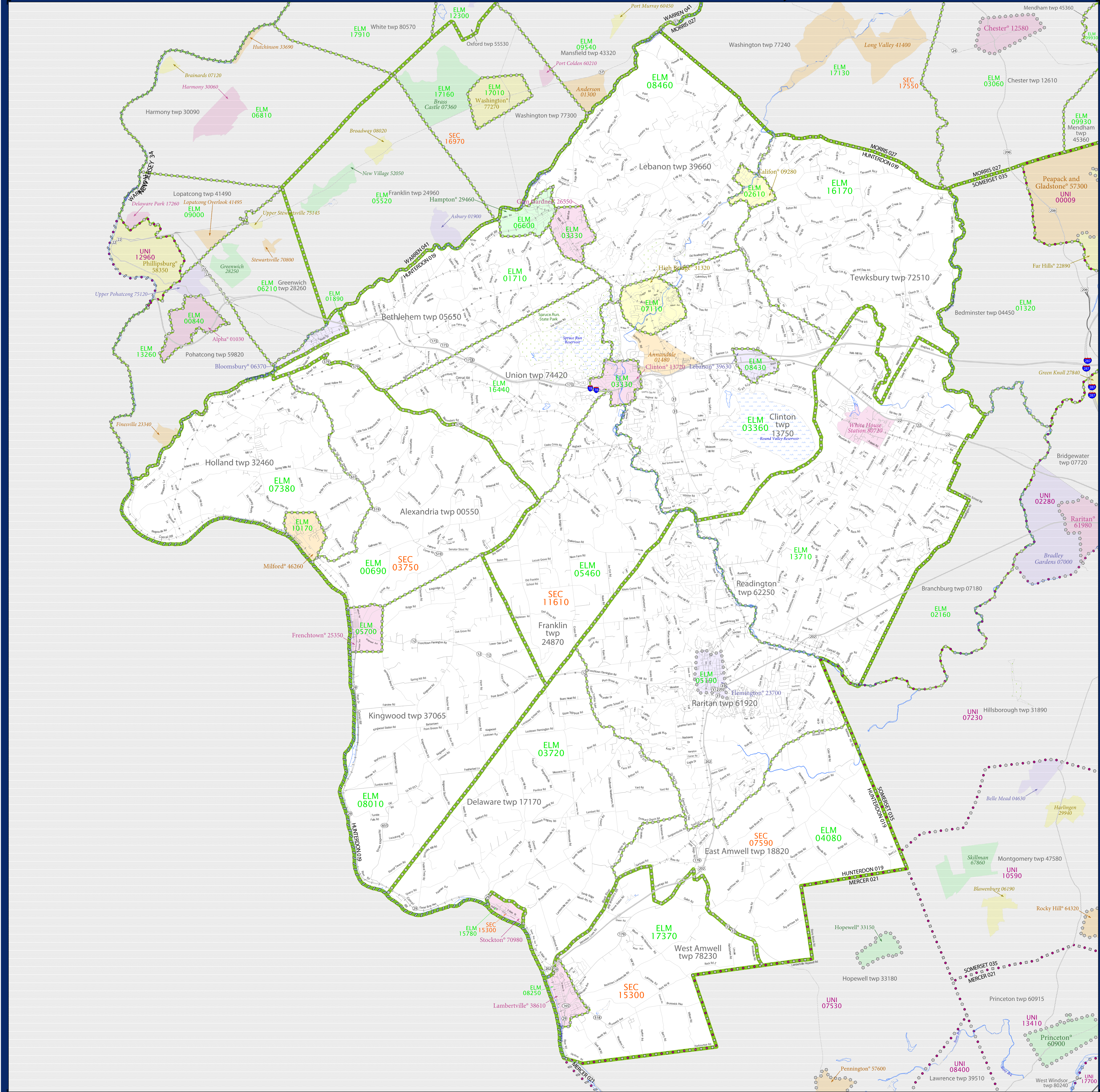


SCHOOL DISTRICT REFERENCE MAP (2010 CENSUS): Hunterdon County, NJ



SYMBOL DESCRIPTION		LEGEND	
[Symbol]	Federal American Indian Reservation	[Symbol]	L'ANSE RES 1880
[Symbol]	Off-Reservation Trust Land	[Symbol]	T1880
[Symbol]	State American Indian Reservation	[Symbol]	Tama Res 4125
[Symbol]	Alaska Native Regional Corporation	[Symbol]	NANA ANRC 52120
[Symbol]	State (or statistically equivalent entity)	[Symbol]	NEW YORK 36
[Symbol]	County (or statistically equivalent entity)	[Symbol]	ERIE 029
[Symbol]	Minor Civil Division (MCD) ^{1,2}	[Symbol]	Bristol town 07485
[Symbol]	Consolidated City	[Symbol]	MILFORD 47500
[Symbol]	Incorporated Place ^{1,3}	[Symbol]	Davis 18100
[Symbol]	Census Designated Place (CDP) ⁴	[Symbol]	Incline Village 35100
[Symbol]	Unified School District	[Symbol]	UNI 03370
[Symbol]	Secondary School District	[Symbol]	SEC 99965
[Symbol]	Elementary School District	[Symbol]	ELM 02220

DESCRIPTION	SYMBOL	DESCRIPTION	SYMBOL
Interstate	[Symbol]	Water Body	[Symbol]
U.S. Highway	[Symbol]	Swamp or Marsh	[Symbol]
State Highway	[Symbol]	Glacier	[Symbol]
Other Road	[Symbol]	Military	[Symbol]
Railroad	[Symbol]	National or State Park, Forest, or Reservation Area	[Symbol]
Pipeline or Power Line	[Symbol]	Inset Area	[Symbol]
Ridge or Fence	[Symbol]	Outside Subject Area	[Symbol]
Property Line	[Symbol]		
Nonvisible Boundary or Feature Not Elsewhere Classified	[Symbol]		

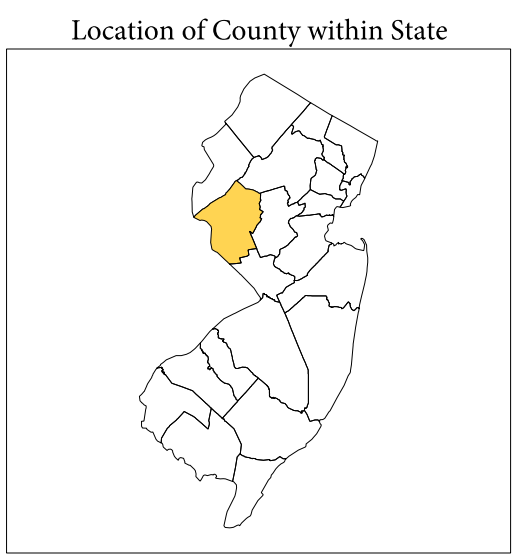
Where state, county, and/or MCD boundaries coincide, the map shows the boundary symbol for only the highest-ranking of these boundaries.

1 A "*" following an MCD name denotes a false MCD. A "*" following a place name indicates that a false MCD exists with the same name and FIPS code as the place; the false MCD label is not shown.

2 MCD boundaries are shown in the following states in which MCDs have functioning governments: Connecticut, Maine, Massachusetts, Michigan, Minnesota, New Hampshire, New Jersey, New York, Pennsylvania, Rhode Island, Vermont, and Wisconsin.

3 Place label color correlates to the place fill color.

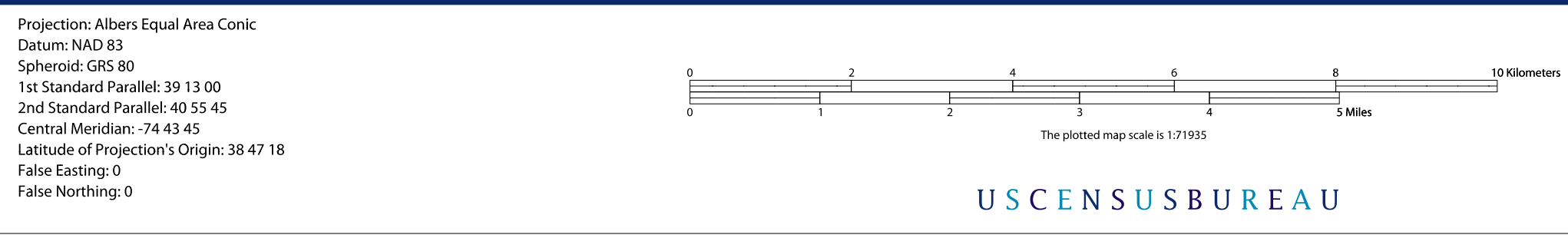
SCHOOL DISTRICTS WITHIN COUNTY	TYPE	CODE	NAME
0000	ELM	Alexandria Township School District	
01710	ELM	Bethlehem Township School District	
01800	ELM	Bloomersburg Borough School District	
02610	ELM	Callon Borough School District	
03330	ELM	Clinton Township School District	
03360	ELM	Clinton Township School District	
03700	ELM	Delaware Township School District	
04080	ELM	East Amwell Township School District	
05150	ELM	Flemington Borough Regional School District	
05460	ELM	Franklin Township School District	
05700	ELM	Frenchtown Borough School District	
06600	ELM	Hampton Borough School District	
07110	ELM	High Bridge Borough School District	
07380	ELM	Holland Township School District	
08610	ELM	Kingwood Township School District	
08250	ELM	Lambertville City School District	
08480	ELM	Lebanon Borough School District	
08460	ELM	Lebanon Borough School District	
10170	ELM	Milford Borough School District	
13710	ELM	Readington Township School District	
15780	ELM	Stockton Borough School District	
16440	ELM	Union Township School District	
17370	ELM	West Amwell Township School District	
03750	SEC	Delaware Valley Regional School District	
07590	SEC	Hunterdon Central Regional School District	
11610	SEC	North Hunterdon Voolheers Regional School District	
15300	SEC	South Hunterdon Regional School District	



All legal boundaries and names are as of January 1, 2010. The boundaries shown on this map are for Census Bureau statistical data collection and tabulation purposes only; their depiction and designation for statistical purposes does not constitute a determination of jurisdictional authority or rights of ownership or entitlement.

Geographic: Vintage: 2010 Census (reference date: January 1, 2010)
 Data Source: U.S. Census Bureau's MAINTIGER database (TAB100134)
 Map Created by Geography Division: November 25, 2010

U.S. DEPARTMENT OF COMMERCE Economics and Statistics Administration U.S. Census Bureau



PARENT SHEET 1
 Total Sheets: 1
 Index Sheets: 0
 Parent Sheets: 1
 Inset Sheets: 0

NAME: Hunterdon County (019)
 ENTITY TYPE: County or statistically equivalent entity
 ST: New Jersey (34)

2010 SD MAP (PARENT)
 2011040901