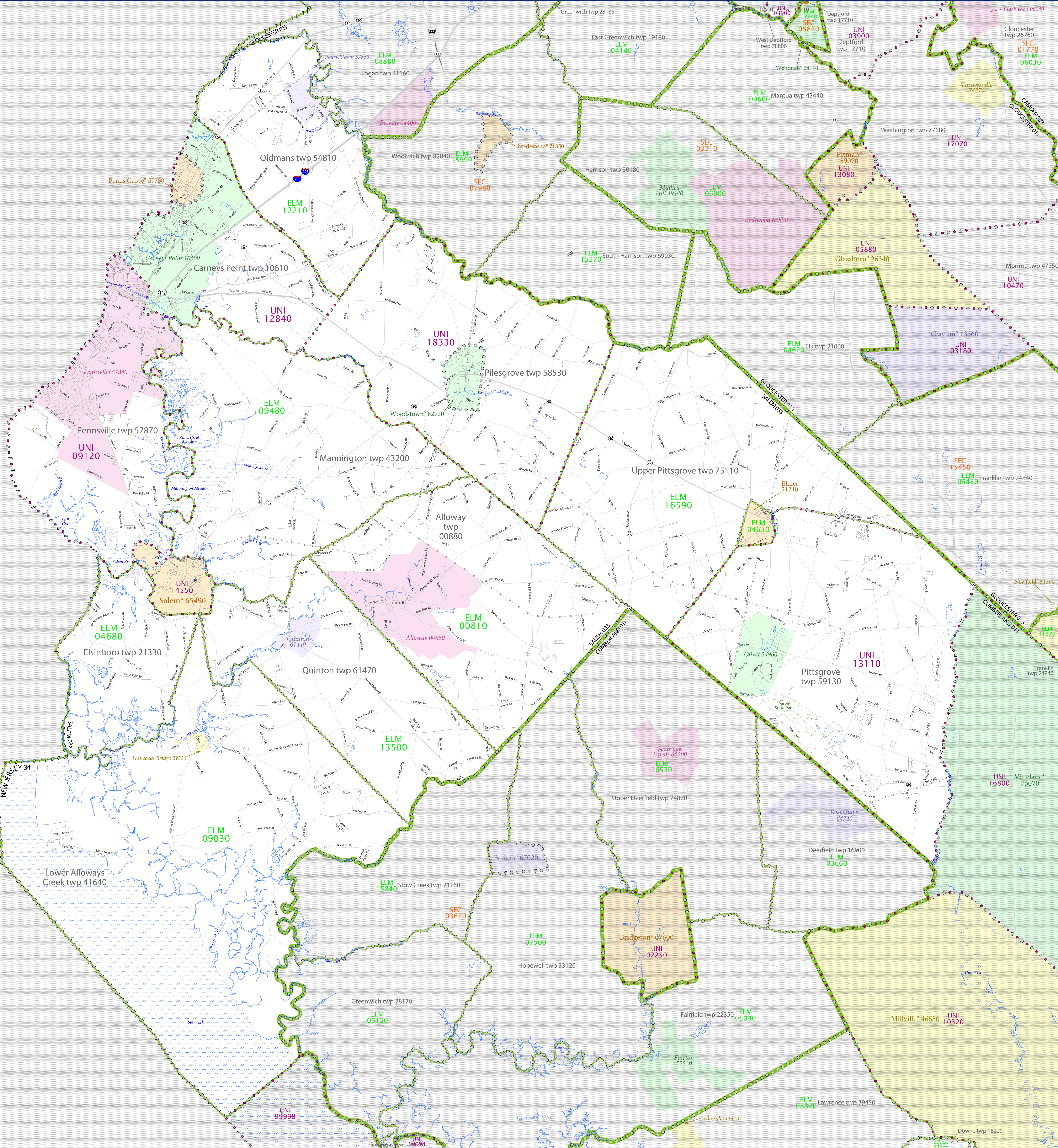


SCHOOL DISTRICT REFERENCE MAP (2010 CENSUS): Salem County, NJ



LEGEND

SYMBOL DESCRIPTION	SYMBOL	SYMBOL	SYMBOL	LABEL STYLE
Federal American Indian Reservation	[Dotted pattern]	[Dotted pattern]	[Dotted pattern]	L'ANSE RES 1880
Off-Reservation Trust Land	[Dotted pattern]	[Dotted pattern]	[Dotted pattern]	T1880
State American Indian Reservation	[Dotted pattern]	[Dotted pattern]	[Dotted pattern]	Tama Res 4125
Alaska Native Regional Corporation	[Dotted pattern]	[Dotted pattern]	[Dotted pattern]	NANA ANRC 52120
State (or statistically equivalent entity)	[Dotted pattern]	[Dotted pattern]	[Dotted pattern]	NEW YORK 36
County (or statistically equivalent entity)	[Dotted pattern]	[Dotted pattern]	[Dotted pattern]	ERIE 029
Minor Civil Division (MCD) ^{1,2}	[Dotted pattern]	[Dotted pattern]	[Dotted pattern]	Bristol town 07485
Consolidated City	[Dotted pattern]	[Dotted pattern]	[Dotted pattern]	MILFORD 47500
Incorporated Place ^{1,3}	[Dotted pattern]	[Dotted pattern]	[Dotted pattern]	Davis 18100
Census Designated Place (CDP) ³	[Dotted pattern]	[Dotted pattern]	[Dotted pattern]	Incline Village 35100
Unified School District	[Dotted pattern]	[Dotted pattern]	[Dotted pattern]	UNI 03370
Secondary School District	[Dotted pattern]	[Dotted pattern]	[Dotted pattern]	SEC 99965
Elementary School District	[Dotted pattern]	[Dotted pattern]	[Dotted pattern]	ELM 02220

DESCRIPTION	SYMBOL	DESCRIPTION	SYMBOL
Interstate	[Thick blue line]	Water Body	[Blue wavy line]
U.S. Highway	[Thick black line]	Swamp or Marsh	[Blue wavy line]
State Highway	[Thin black line]	Glacier	[Blue wavy line]
Other Road	[Thin black line]	Military	[Blue wavy line]
4WD Trail, Stoney, Alley, Walkway, or Ferry	[Thin black line]	National or State Park, Forest, or Recreation Area	[Blue wavy line]
Railroad	[Thin black line]	Inset Area	[Blue wavy line]
Pipeline or Power Line	[Thin black line]	Outside Subject Area	[Blue wavy line]
Ridge or Fence	[Thin black line]		
Property Line	[Thin black line]		
Nonvisible Boundary or Feature Not Elsewhere Classified	[Thin black line]		

Where state, county, and/or MCD boundaries coincide, the map shows the boundary symbol for only the highest-ranking of these boundaries.

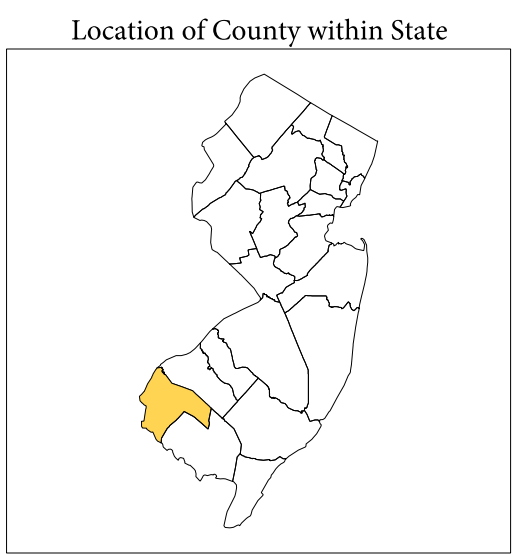
1 A "*" following an MCD name denotes a false MCD. A "*" following a place name indicates that a false MCD exists with the same name and FIPS code as the place; the false MCD label is not shown.

2 MCD boundaries are shown in the following states in which MCDs have functioning governments: Connecticut, Maine, Massachusetts, Michigan, Minnesota, New Hampshire, New Jersey, New York, Pennsylvania, Rhode Island, Vermont, and Wisconsin.

3 Place label color correlates to the place fill color.

SCHOOL DISTRICTS WITHIN COUNTY

TYPE	CODE	NAME
ELM	00010	Alloway Township School District
ELM	04650	Elmer Borough School District
ELM	04660	Elmhurst Township School District
ELM	09030	Lower Alloways Creek Township School District
ELM	09480	Mannington Township School District
ELM	12210	Oldmans Township School District
ELM	13500	Quinton Township School District
ELM	16590	Upper Pittsgrove Township School District
UNI	09120	Pennsville Township Regional School District
UNI	12840	Penns Grove-Carneys Point Regional School District
UNI	13110	Pittsgrove Township School District
UNI	14550	Salem City School District
UNI	18330	Woodstown Pilesgrove Regional School District



All legal boundaries and names are as of January 1, 2010. The boundaries shown on this map are for Census Bureau statistical data collection and tabulation purposes only; their depiction and designation for statistical purposes does not constitute a determination of jurisdictional authority or rights of ownership or entitlement.

Geographic: Vintage: 2010 Census (reference date: January 1, 2010)
 Data Source: U.S. Census Bureau's MAINTIGER database (TAB100214)
 Map Created by Geography Division: November 25, 2010

U.S. DEPARTMENT OF COMMERCE Economics and Statistics Administration U.S. Census Bureau

Projection: Albers Equal Area Conic
 Datum: NAD 83
 Spheroid: GRS 80
 1st Standard Parallel: 39 13 00
 2nd Standard Parallel: 40 55 45
 Central Meridian: -74 43 45
 Latitude of Projection's Origin: 38 47 18
 False Easting: 0
 False Northing: 0

The plotted map scale is 1:99377

USCENSUSBUREAU

PARENT SHEET 1
 Total Sheets: 1
 Index Sheets: 0
 Parent Sheets: 1
 Inset Sheets: 0

NAME: Salem County (033)
 ENTITY TYPE: County or statistically equivalent entity
 ST: New Jersey (34)

2010 SD MAP (PARENT)
 20110403001