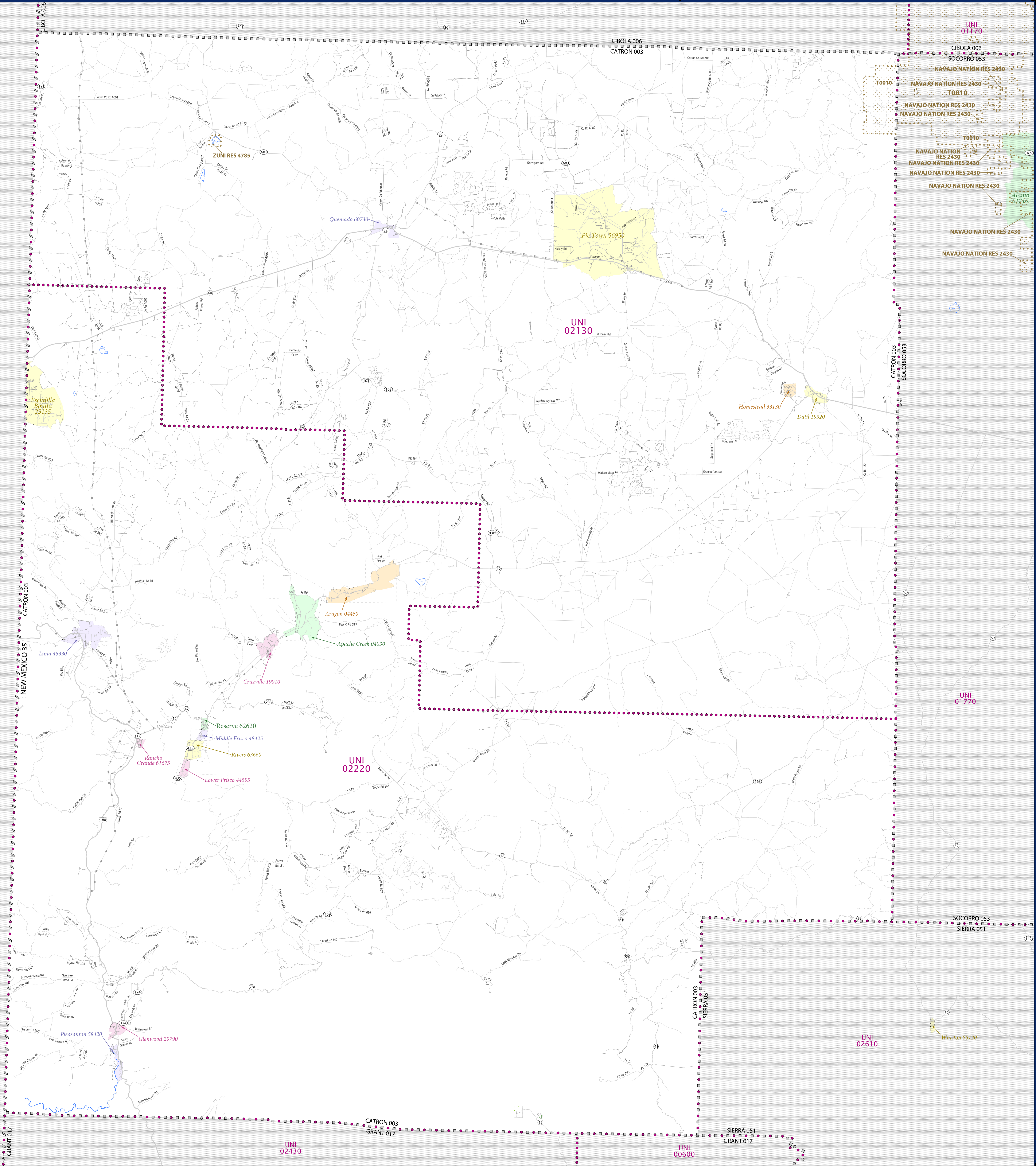


SCHOOL DISTRICT REFERENCE MAP (2010 CENSUS): Catron County, NM



LEGEND

SYMBOL DESCRIPTION	SYMBOL	LABEL STYLE
Federal American Indian Reservation	[Dotted pattern]	L'ANSE RES 1880
Off-Reservation Trust Land	[Dotted pattern]	T1880
State American Indian Reservation	[Dotted pattern]	Tama Res 4125
Alaska Native Regional Corporation	[Dotted pattern]	NANA ANRC 52120
State (or statistically equivalent entity)	[Dotted pattern]	NEW YORK 36
County (or statistically equivalent entity)	[Dotted pattern]	ERIE 029
Minor Civil Division (MCD) ^{1,2}	[Dotted pattern]	Bristol town 07485
Consolidated City	[Dotted pattern]	MILFORD 47500
Incorporated Place ³	[Dotted pattern]	Davis 18100
Census Designated Place (CDP) ³	[Dotted pattern]	Incline Village 35100
Unified School District	[Dotted pattern]	UNI 03370
Secondary School District	[Dotted pattern]	SEC 99965
Elementary School District	[Dotted pattern]	ELM 02220

DESCRIPTION	SYMBOL	DESCRIPTION	SYMBOL
Interstate	[Thick solid line]	Water Body	[Blue wavy line]
U.S. Highway	[Thin solid line]	Swamp or Marsh	[Blue wavy line]
State Highway	[Thin solid line]	Other Road	[Thin solid line]
Other Road	[Thin solid line]	WVD Trail, Stoney, Alley, Walkway, or Ferry	[Thin solid line]
Railroad	[Thin solid line]	Pipeline or Power Line	[Thin solid line]
Pipeline or Power Line	[Thin solid line]	Ridge or Fence	[Thin solid line]
Ridge or Fence	[Thin solid line]	Property Line	[Thin solid line]
Property Line	[Thin solid line]	Nonvisible Boundary or Feature Not Elsewhere Classified	[Thin solid line]
Nonvisible Boundary or Feature Not Elsewhere Classified	[Thin solid line]		

Where state, county, and/or MCD boundaries coincide, the map shows the boundary symbol for only the highest-ranking of these boundaries.

1 A "*" following an MCD name denotes a false MCD. A "*" following a place name indicates that a false MCD exists with the same name and FIPS code as the place; the false MCD label is not shown.

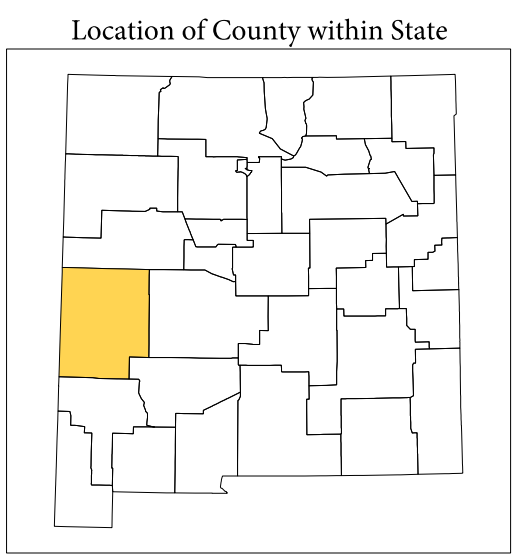
2 MCD boundaries are shown in the following states in which MCDs have functioning governments: Connecticut, Maine, Massachusetts, Michigan, Minnesota, New Hampshire, New Jersey, New York, Pennsylvania, Rhode Island, Vermont, and Wisconsin.

3 Place label color correlates to the place fill color.

OFF-RESERVATION TRUST LAND NAMES
T0010 Acoma

SCHOOL DISTRICTS WITHIN COUNTY

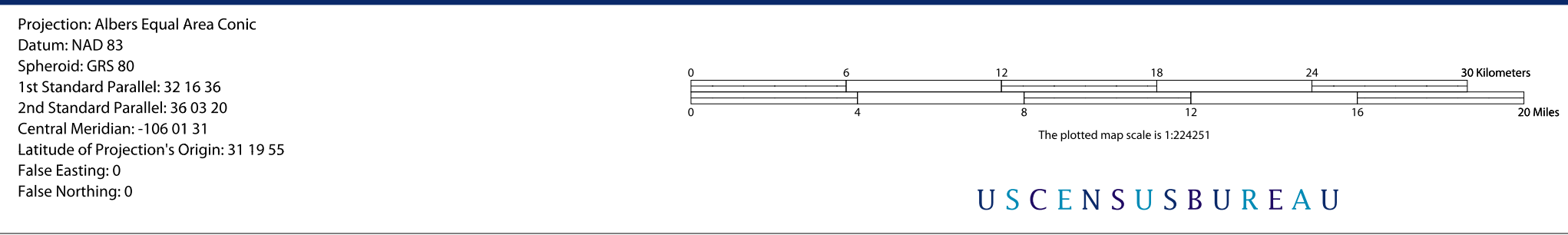
TYPE	CODE	NAME
UNI	02130	Quemado Independent Schools
UNI	02220	Reserve Independent Schools



All legal boundaries and names are as of January 1, 2010. The boundaries shown on this map are for Census Bureau statistical data collection and tabulation purposes only; their depiction and designation for statistical purposes does not constitute a determination of jurisdictional authority or rights of ownership or entitlement.

Geographic: Vintage: 2010 Census (reference date: January 1, 2010)
Data Source: U.S. Census Bureau's MAINTIGR database (TAB100133)
Map Created by Geography Division: December 10, 2010

U.S. DEPARTMENT OF COMMERCE Economics and Statistics Administration U.S. Census Bureau



PARENT SHEET 1
Total Sheets: 1
Index Sheets: 0
Parent Sheets: 1
Inset Sheets: 0

NAME: Catron County (003)
ENTITY TYPE: County or statistically equivalent entity
ST: New Mexico (35)

2010 SD MAP (PARENT)
2010050001