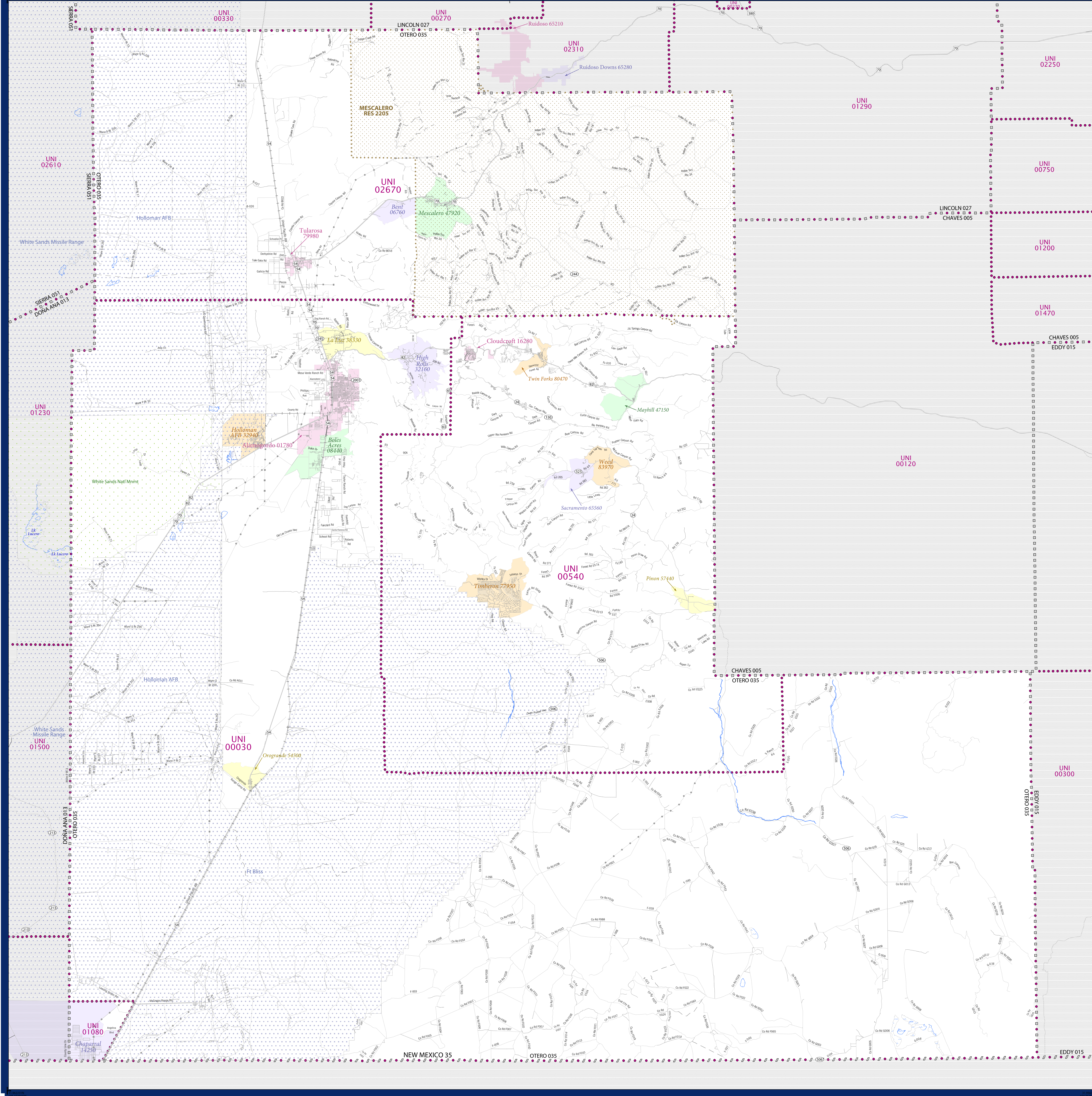


SCHOOL DISTRICT REFERENCE MAP (2010 CENSUS): Otero County, NM



| SYMBOL DESCRIPTION | | LEGEND | |
|---|----------|---|-----------------------|
| Federal American Indian Reservation | [Symbol] | Federal American Indian Reservation | L'ANSE RES 1880 |
| Off-Reservation Trust Land | [Symbol] | Off-Reservation Trust Land | T1880 |
| State American Indian Reservation | [Symbol] | State American Indian Reservation | Tama Res 4125 |
| Alaska Native Regional Corporation | [Symbol] | Alaska Native Regional Corporation | NANA ANRC 52120 |
| State (or statistically equivalent entity) | [Symbol] | State (or statistically equivalent entity) | NEW YORK 36 |
| County (or statistically equivalent entity) | [Symbol] | County (or statistically equivalent entity) | ERIE 029 |
| Minor Civil Division (MCD) ^{1,2} | [Symbol] | Minor Civil Division (MCD) ^{1,2} | Bristol town 07485 |
| Consolidated City | [Symbol] | Consolidated City | MILFORD 47500 |
| Incorporated Place ^{1,3} | [Symbol] | Incorporated Place ^{1,3} | Davis 18100 |
| Census Designated Place (CDP) ³ | [Symbol] | Census Designated Place (CDP) ³ | Incline Village 35100 |
| Unified School District | [Symbol] | Unified School District | UNI 03370 |
| Secondary School District | [Symbol] | Secondary School District | SEC 99965 |
| Elementary School District | [Symbol] | Elementary School District | ELM 02220 |

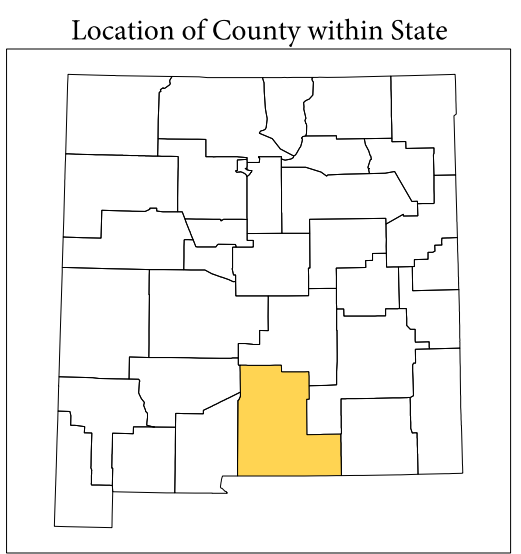
Where state, county, and/or MCD boundaries coincide, the map shows the boundary symbol for only the highest-ranking of these boundaries.

1 A "*" following an MCD name denotes a false MCD. A "*" following a place name indicates that a false MCD exists with the same name and FIPS code as the place; the false MCD label is not shown.

2 MCD boundaries are shown in the following states in which MCDs have functioning governments: Connecticut, Maine, Massachusetts, Michigan, Minnesota, New Hampshire, New Jersey, New York, Pennsylvania, Rhode Island, Vermont, and Wisconsin.

3 Place label color correlates to the place fill color.

| SCHOOL DISTRICTS WITHIN COUNTY | | |
|--------------------------------|-------|------------------------------|
| TYPE | CODE | NAME |
| UNI | 00050 | Alamogordo Public Schools |
| UNI | 00540 | Cloudcroft Municipal Schools |
| UNI | 01080 | Golden Independent Schools |
| UNI | 02670 | Tularosa Municipal Schools |

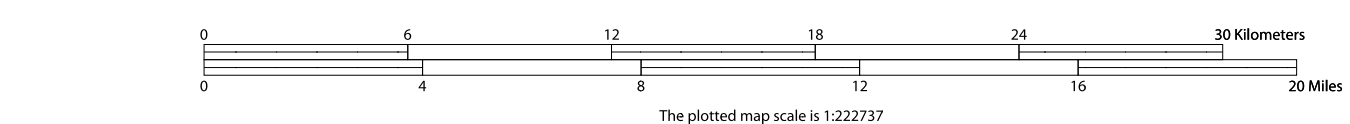


All legal boundaries and names are as of January 1, 2010. The boundaries shown on this map are for Census Bureau statistical data collection and tabulation purposes only; their depiction and designation for statistical purposes does not constitute a determination of jurisdictional authority or rights of ownership or entitlement.

Geographic Vintage: 2010 Census (reference date: January 1, 2010)
 Data Source: U.S. Census Bureau's MAINTIGR database (TAB100133)
 Map Created by Geography Division: December 09, 2010

U.S. DEPARTMENT OF COMMERCE Economics and Statistics Administration U.S. Census Bureau

Projection: Albers Equal Area Conic
 Datum: NAD 83
 Spheroid: GRS 80
 1st Standard Parallel: 32 16 36
 2nd Standard Parallel: 36 03 20
 Central Meridian: -106 01 31
 Latitude of Projection's Origin: 31 19 55
 False Easting: 0
 False Northing: 0



USCENSUSBUREAU

PARENT SHEET 1
 Total Sheets: 1
 Index Sheets: 0
 Parent Sheets: 1
 Inset Sheets: 0

NAME: Otero County (035)
 ENTITY TYPE: County or statistically equivalent entity
 ST: New Mexico (35)

2010 SD MAP (PARENT)
 2010101001