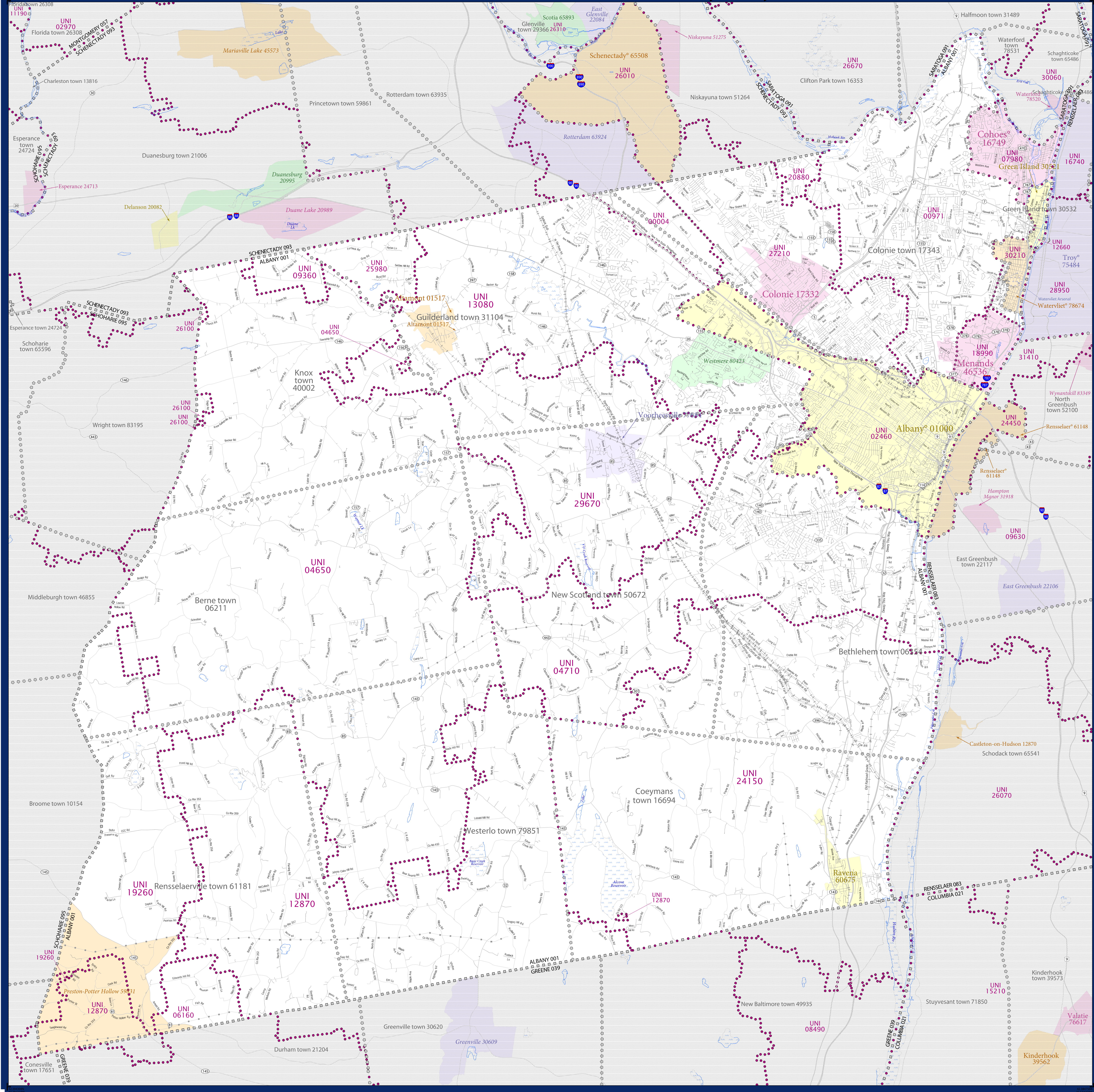


# SCHOOL DISTRICT REFERENCE MAP (2010 CENSUS): Albany County, NY



### LEGEND

SYMBOL DESCRIPTION	SYMBOL	SYMBOL	SYMBOL
Federal American Indian Reservation	[Dotted pattern]	L'ANSE RES 1880	[Dotted pattern]
Off-Reservation Trust Land	[Dotted pattern]	T1880	[Dotted pattern]
State American Indian Reservation	[Dotted pattern]	Tama Res 4125	[Dotted pattern]
Alaska Native Regional Corporation	[Dotted pattern]	NANA ANRC 52120	[Dotted pattern]
State (or statistically equivalent entity)	[Dotted pattern]	NEW YORK 36	[Dotted pattern]
County (or statistically equivalent entity)	[Dotted pattern]	ERIE 029	[Dotted pattern]
Minor Civil Division (MCD) <sup>1,2</sup>	[Dotted pattern]	Bristol town 07485	[Dotted pattern]
Consolidated City	[Dotted pattern]	MILFORD 47500	[Dotted pattern]
Incorporated Place <sup>1,3</sup>	[Dotted pattern]	Davis 18100	[Dotted pattern]
Census Designated Place (CDP) <sup>1</sup>	[Dotted pattern]	Incline Village 35100	[Dotted pattern]
Unified School District	[Dotted pattern]	UNI 03370	[Dotted pattern]
Secondary School District	[Dotted pattern]	SEC 99955	[Dotted pattern]
Elementary School District	[Dotted pattern]	ELM 02220	[Dotted pattern]

DESCRIPTION	SYMBOL	DESCRIPTION	SYMBOL
Interstate	[Thick blue line]	Water Body	[Blue wavy line]
U.S. Highway	[Blue line with shield]	Swamp or Marsh	[Blue wavy line]
State Highway	[Blue line with shield]	Glacier	[Blue wavy line]
Other Road	[Thin grey line]	Military	[Blue wavy line]
4WD Trail, Steep, Alley, Walkway, or Ferry	[Thin grey line]	National or State Park, Forest, or Reservation Area	[Blue wavy line]
Railroad	[Black line with cross-ticks]	Inset Area	[Blue wavy line]
Pipeline or Power Line	[Thin grey line]	Outside Subject Area	[Blue wavy line]
Ridge or Fence	[Thin grey line]		
Property Line	[Thin grey line]		
Nonvisible Boundary or Feature Not Elsewhere Classified	[Thin grey line]		

Where state, county, and/or MCD boundaries coincide, the map shows the boundary symbol for only the highest-ranking of these boundaries.

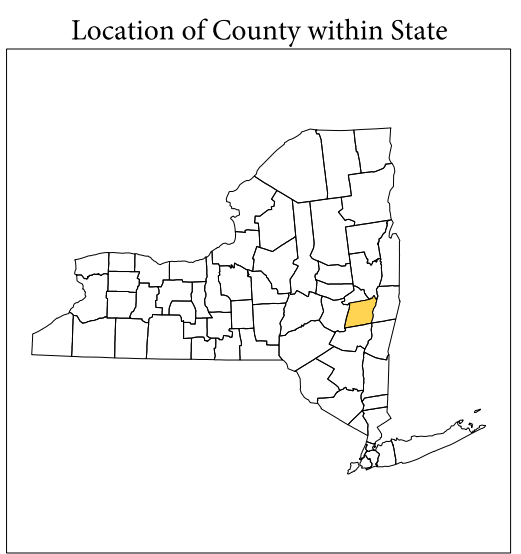
1 A "\*" following an MCD name denotes a false MCD. A "\*" following a place name indicates that a false MCD exists with the same name and FIPS code as the place; the false MCD label is not shown.

2 MCD boundaries are shown in the following states in which MCDs have functioning governments: Connecticut, Maine, Massachusetts, Michigan, Minnesota, New Hampshire, New Jersey, New York, Pennsylvania, Rhode Island, Vermont, and Wisconsin.

3 Place label color correlates to the place fill color.

### SCHOOL DISTRICTS WITHIN COUNTY

TYPE	CODE	NAME
UNI	0004	Rotterdam-Mohawgan Central School District
UNI	00971	North Colonie Central School District
UNI	02460	Albany City School District
UNI	04650	Berne-Knox-Westerlo Central School District
UNI	04710	Bethlehem Central School District
UNI	05160	Cano-Durham Central School District
UNI	07980	Cohoes City School District
UNI	09360	Duanesburg Central School District
UNI	12660	Green Island Union Free School District
UNI	12870	Greenville Central School District
UNI	13880	Guiderland Central School District
UNI	18990	Menands Union Free School District
UNI	19260	Middleburgh Central School District
UNI	20880	Niskayuna Central School District
UNI	24150	Ravena-Coeymans-Selkirk Central School District
UNI	25980	Schalmont Central School District
UNI	26100	Schoharie Central School District
UNI	27210	South Colonie Central School District
UNI	29670	Voorheesville Central School District
UNI	30210	Watervliet City School District



All legal boundaries and names are as of January 1, 2010. The boundaries shown on this map are for Census Bureau statistical data collection and tabulation purposes only; their depiction and designation for statistical purposes does not constitute a determination of jurisdictional authority or rights of ownership or entitlement.

Geographic: Vintage: 2010 Census (reference date: January 1, 2010)  
 Data Source: U.S. Census Bureau's MAINTIGR database (TAB100136)  
 Map Created by Geography Division: December 10, 2010

U.S. DEPARTMENT OF COMMERCE Economics and Statistics Administration U.S. Census Bureau

Projection: Albers Equal Area Conic  
 Datum: NAD 83  
 Spheroid: GRS 80  
 1st Standard Parallel: 41 14 01  
 2nd Standard Parallel: 44 15 33  
 Central Meridian: 75 46 13  
 Latitude of Projection's Origin: 40 28 38  
 False Easting: 0  
 False Northing: 0

The plotted map scale is 1:64640

USCENSUSBUREAU

PARENT SHEET 1  
 Total Sheets: 1  
 Index Sheets: 0  
 Parent Sheets: 1  
 Inset Sheets: 0

NAME: Albany County (001)  
 ENTITY TYPE: County or statistically equivalent entity  
 ST: New York (36)