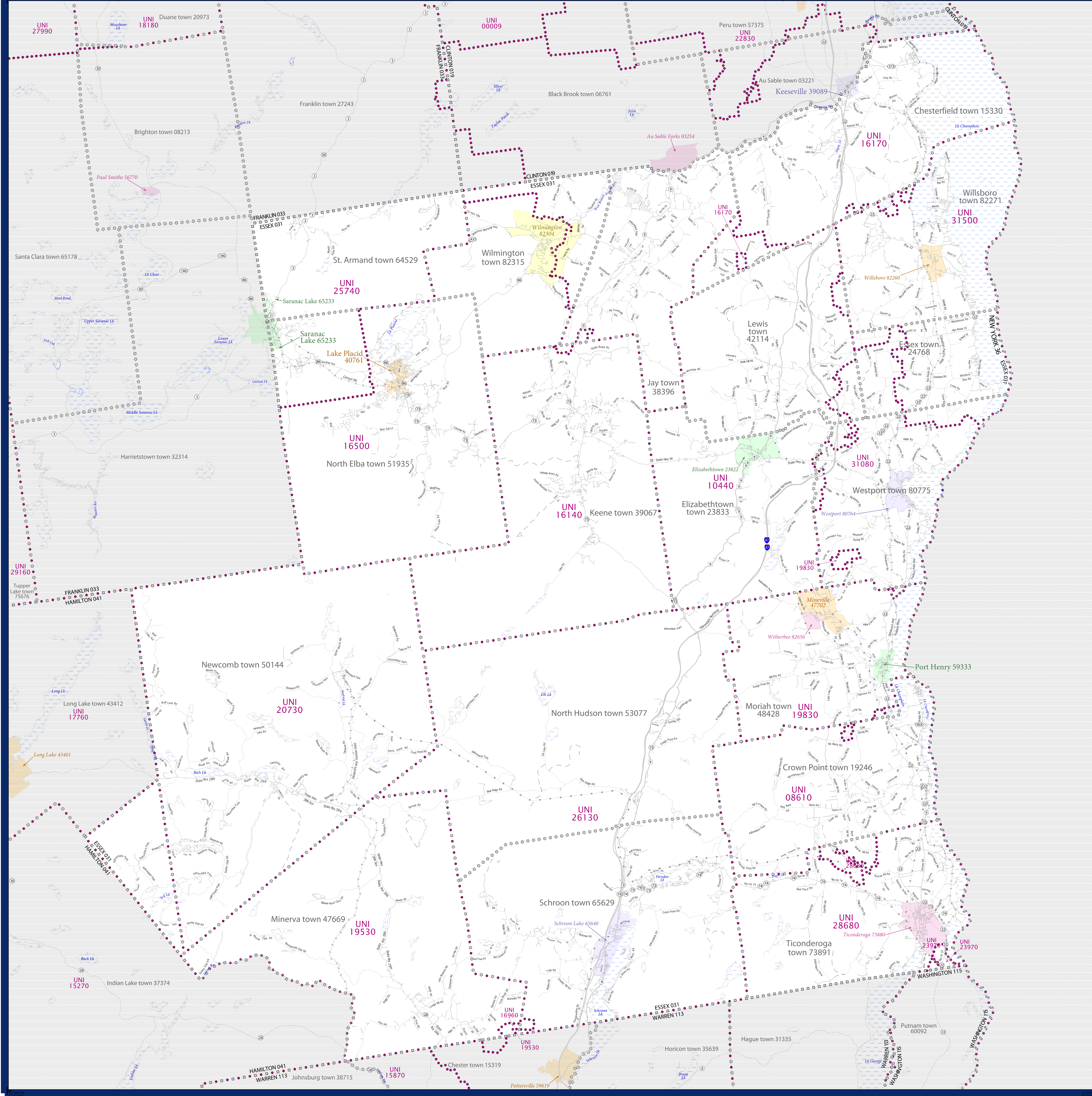


# SCHOOL DISTRICT REFERENCE MAP (2010 CENSUS): Essex County, NY



SYMBOL DESCRIPTION		LEGEND	
Federal American Indian Reservation	[Symbol]	Water Body	[Symbol]
Off-Reservation Trust Land	[Symbol]	Swamp or Marsh	[Symbol]
State American Indian Reservation	[Symbol]	Glacier	[Symbol]
Alaska Native Regional Corporation	[Symbol]	Military	[Symbol]
State (or statistically equivalent entity)	[Symbol]	National or State Park, Forest, or Recreation Area	[Symbol]
County (or statistically equivalent entity)	[Symbol]	Inset Area	[Symbol]
Minor Civil Division (MCD) <sup>1,2</sup>	[Symbol]	Outside Subject Area	[Symbol]
Consolidated City	[Symbol]		
Incorporated Place <sup>3</sup>	[Symbol]		
Census Designated Place (CDP) <sup>3</sup>	[Symbol]		
Unified School District	[Symbol]		
Secondary School District	[Symbol]		
Elementary School District	[Symbol]		

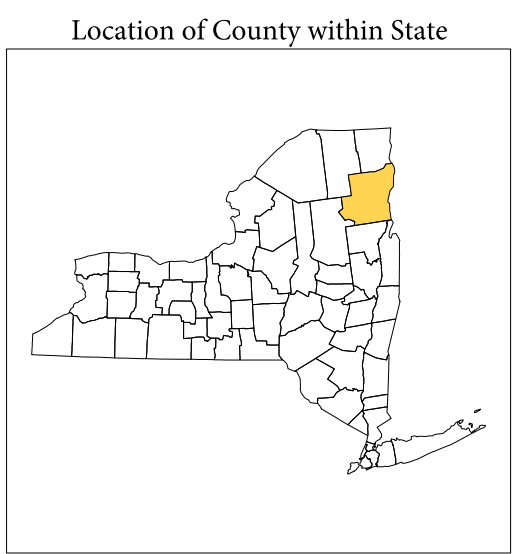
Where state, county, and/or MCD boundaries coincide, the map shows the boundary symbol for only the highest-ranking of these boundaries.

1 A "\*" following an MCD name denotes a false MCD. A "\*" following a place name indicates that a false MCD exists with the same name and FIPS code as the place; the false MCD label is not shown.

2 MCD boundaries are shown in the following states in which MCDs have functioning governments: Connecticut, Maine, Massachusetts, Michigan, Minnesota, New Hampshire, New Jersey, New York, Pennsylvania, Rhode Island, Vermont, and Wisconsin.

3 Place label color correlates to the place fill color.

SCHOOL DISTRICTS WITHIN COUNTY
UNI 08610 Crown Point Central School District
UNI 10440 Elizabethtown-Lewis Central School District
UNI 16140 Keene Central School District
UNI 16170 Ausable Valley Central School District
UNI 16500 Lake Placid Central School District
UNI 16950 North Warren Central School District
UNI 19530 Minerva Central School District
UNI 19830 Moriah Central School District
UNI 20730 Newcomb Central School District
UNI 23970 Putnam Central School District
UNI 25740 Saranac Lake Central School District
UNI 26130 Schroon Lake Central School District
UNI 28680 Ticonderoga Central School District
UNI 31080 Westport Central School District
UNI 31500 Willboro Central School District



All legal boundaries and names are as of January 1, 2010. The boundaries shown on this map are for Census Bureau statistical data collection and tabulation purposes only; their depiction and designation for statistical purposes does not constitute a determination of jurisdictional authority or rights of ownership or entitlement.

Geographic Vintage: 2010 Census (reference date: January 1, 2010)  
 Data Source: U.S. Census Bureau's MAINTIGR database (TAB100336)  
 Map Created by Geography Division: December 10, 2010

Projection: Albers Equal Area Conic  
 Datum: NAD 83  
 Spheroid: GRS 80  
 1st Standard Parallel: 41 14 01  
 2nd Standard Parallel: 44 15 33  
 Central Meridian: 75 46 13  
 Latitude of Projection's Origin: 40 28 38  
 False Easting: 0  
 False Northing: 0

Scale: 1:100,000  
 0 2 4 6 8 10 12 14 16 Kilometers  
 0 2 4 6 8 10 12 14 16 Miles

U.S. DEPARTMENT OF COMMERCE Economics and Statistics Administration U.S. Census Bureau

USCENSUSBUREAU

PARENT SHEET 1  
 Total Sheets: 1  
 Index Sheets: 0  
 Parent Sheets: 1  
 Inset Sheets: 0

NAME: Essex County (031)  
 ENTITY TYPE: County or statistically equivalent entity  
 ST: New York (36)

2010 SD MAP (PARENT)  
 2010031001