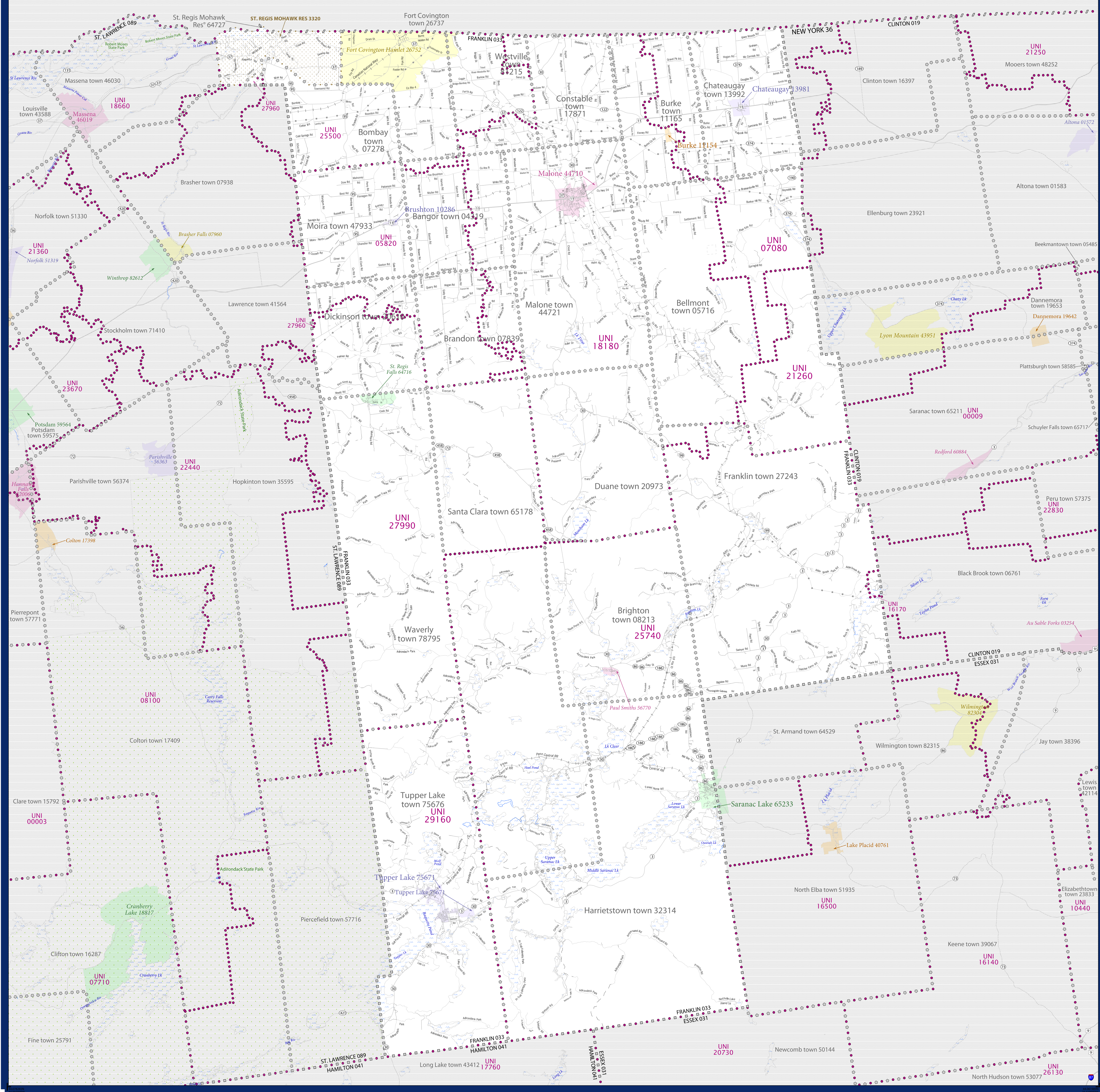


SCHOOL DISTRICT REFERENCE MAP (2010 CENSUS): Franklin County, NY



LEGEND

SYMBOL DESCRIPTION	SYMBOL	SYMBOL DESCRIPTION	SYMBOL
Federal American Indian Reservation	[Dotted Pattern]	Water Body	[Blue Area]
Off-Reservation Trust Land	[Dotted Pattern]	Swamp or Marsh	[Green Area]
State American Indian Reservation	[Dotted Pattern]	Glacier	[Blue Area]
Alaska Native Regional Corporation	[Dotted Pattern]	Military	[Blue Area]
State (or statistically equivalent entity)	[Dotted Pattern]	National or State Park, Forest, or Recreation Area	[Green Area]
County (or statistically equivalent entity)	[Dotted Pattern]	Inset Area	[Grey Area]
Minor Civil Division (MCD) ^{1,2}	[Dotted Pattern]	Outside Subject Area	[Grey Area]
Consolidated City	[Dotted Pattern]		
Incorporated Place ³	[Dotted Pattern]		
Census Designated Place (CDP) ³	[Dotted Pattern]		
Unified School District	[Dotted Pattern]		
Secondary School District	[Dotted Pattern]		
Elementary School District	[Dotted Pattern]		

Where state, county, and/or MCD boundaries coincide, the map shows the boundary symbol for only the highest-ranking of these boundaries.

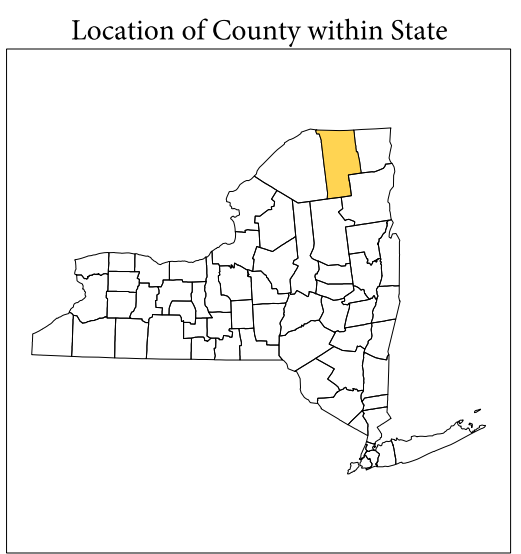
1 A " " following an MCD name denotes a false MCD. A " " following a place name indicates that a false MCD exists with the same name and FIPS code as the place; the false MCD label is not shown.

2 MCD boundaries are shown in the following states in which MCDs have functioning governments: Connecticut, Maine, Massachusetts, Michigan, Minnesota, New Hampshire, New Jersey, New York, Pennsylvania, Rhode Island, Vermont, and Wisconsin.

3 Place label color correlates to the place fill color.

SCHOOL DISTRICTS WITHIN COUNTY

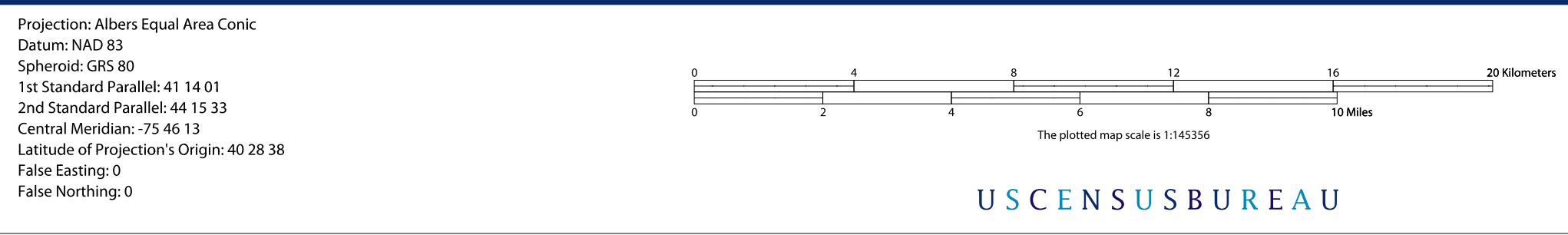
TYPE	CODE	NAME
UNI	03370	Bruchton-Moira Central School District
UNI	07080	Chateaugay Central School District
UNI	16170	Ausable Valley Central School District
UNI	18180	Malone Central School District
UNI	21260	Northern Adirondack Central School District
UNI	25500	Salmon River Central School District
UNI	25740	Saranac Lake Central School District
UNI	27960	Brasher Falls Central School District
UNI	27990	St. Regis Falls Central School District
UNI	29160	Tupper Lake Central School District



All legal boundaries and names are as of January 1, 2010. The boundaries shown on this map are for Census Bureau statistical data collection and tabulation purposes only; their depiction and designation for statistical purposes does not constitute a determination of jurisdictional authority or rights of ownership or entitlement.

Geographic Vintage: 2010 Census (reference date: January 1, 2010)
 Data Source: U.S. Census Bureau's MAINTIGR database (TAB100136)
 Map Created by Geography Division: December 10, 2010

U.S. DEPARTMENT OF COMMERCE Economics and Statistics Administration U.S. Census Bureau



PARENT SHEET 1
 Total Sheets: 1
 Index Sheets: 0
 Parent Sheets: 0
 Inset Sheets: 0

NAME: Franklin County (033)
 ENTITY TYPE: County or statistically equivalent entity
 ST: New York (36)

2010 SD MAP (PARENT)
 20100610001