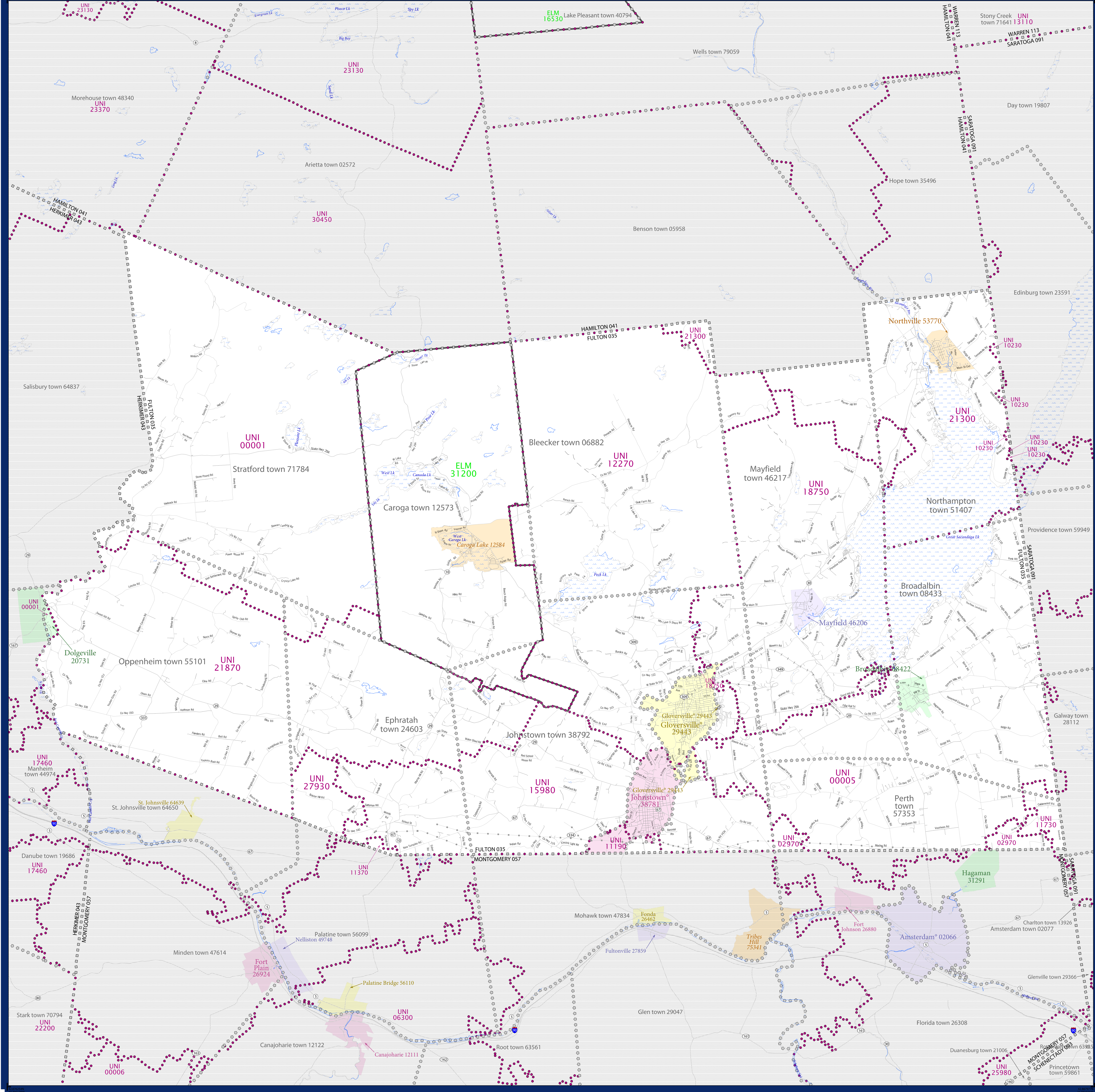


# SCHOOL DISTRICT REFERENCE MAP (2010 CENSUS): Fulton County, NY



### LEGEND

SYMBOL DESCRIPTION	SYMBOL	SYMBOL DESCRIPTION	SYMBOL
Federal American Indian Reservation	[Pattern]	Water Body	[Symbol]
Off-Reservation Trust Land	[Pattern]	Swamp or Marsh	[Symbol]
State American Indian Reservation	[Pattern]	Glacier	[Symbol]
Alaska Native Regional Corporation	[Pattern]	Military	[Symbol]
State (or statistically equivalent entity)	[Pattern]	National or State Park, Forest, or Recreation Area	[Symbol]
County (or statistically equivalent entity)	[Pattern]	Inset Area	[Symbol]
Minor Civil Division (MCD) <sup>1,2</sup>	[Pattern]	Outside Subject Area	[Symbol]
Consolidated City	[Pattern]		
Incorporated Place <sup>3</sup>	[Pattern]		
Census Designated Place (CDP) <sup>3</sup>	[Pattern]		
Unified School District	[Line Style]		
Secondary School District	[Line Style]		
Elementary School District	[Line Style]		

Where state, county, and/or MCD boundaries coincide, the map shows the boundary symbol for only the highest-ranking of these boundaries.

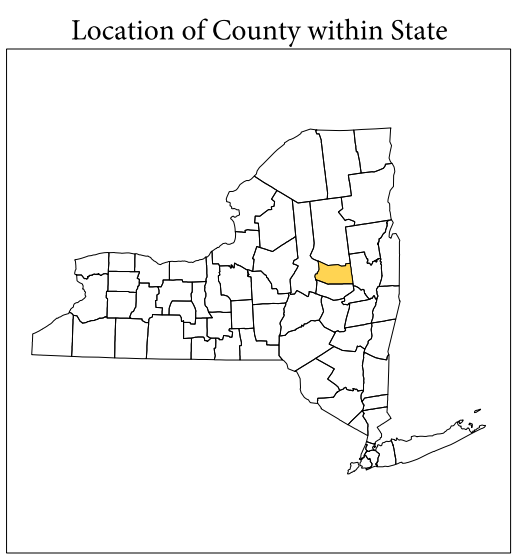
1 A "\*" following an MCD name denotes a false MCD. A "\*" following a place name indicates that a false MCD exists with the same name and FIPS code as the place; the false MCD label is not shown.

2 MCD boundaries are shown in the following states in which MCDs have functioning governments: Connecticut, Maine, Massachusetts, Michigan, Minnesota, New Hampshire, New Jersey, New York, Pennsylvania, Rhode Island, Vermont, and Wisconsin.

3 Place label color correlates to the place fill color.

#### SCHOOL DISTRICTS WITHIN COUNTY

TYPE	CODE	NAME
ELM	31200	Whitesville Union Free School District
UNI	00001	Dolgeville Central School District
UNI	00005	Broadalbin-Ferth Central School District
UNI	02970	Amsterdam City School District
UNI	10230	Edinburg Common School District
UNI	11150	Fonda-Fultonville Central School District
UNI	11310	Fort Plain Central School District
UNI	11730	Galway Central School District
UNI	12270	Gloversville City School District
UNI	15980	Johnstown City School District
UNI	18750	Mayfield Central School District
UNI	21300	Northville Central School District
UNI	21810	Oppenheim-Ephratah Central School District
UNI	27930	St. Johnsville Central School District



All legal boundaries and names are as of January 1, 2010. The boundaries shown on this map are for Census Bureau statistical data collection and tabulation purposes only; their depiction and designation for statistical purposes does not constitute a determination of jurisdictional authority or rights of ownership or entitlement.

Geographic: Vintage: 2010 Census (reference date: January 1, 2010)  
 Data Source: U.S. Census Bureau's MAINTIGR database (TAB100136)  
 Map Created by Geography Division: December 10, 2010

U.S. DEPARTMENT OF COMMERCE Economics and Statistics Administration U.S. Census Bureau

Projection: Albers Equal Area Conic  
 Datum: NAD 83  
 Spheroid: GRS 80  
 1st Standard Parallel: 41 14 01  
 2nd Standard Parallel: 44 15 33  
 Central Meridian: 75 46 13  
 Latitude of Projection's Origin: 40 28 38  
 False Easting: 0  
 False Northing: 0

0 2 4 6 8 10 kilometers  
 0 2 4 6 8 10 miles

The plotted map scale is 1:79902

U.S. CENSUS BUREAU

PARENT SHEET 1

Total Sheets: 1  
 Index Sheets: 0  
 Parent Sheets: 1  
 Inset Sheets: 0

NAME: Fulton County (035)  
 ENTITY TYPE: County or statistically equivalent entity  
 ST: New York (36)

2010 SD MAP (PARENT)  
 20100610001