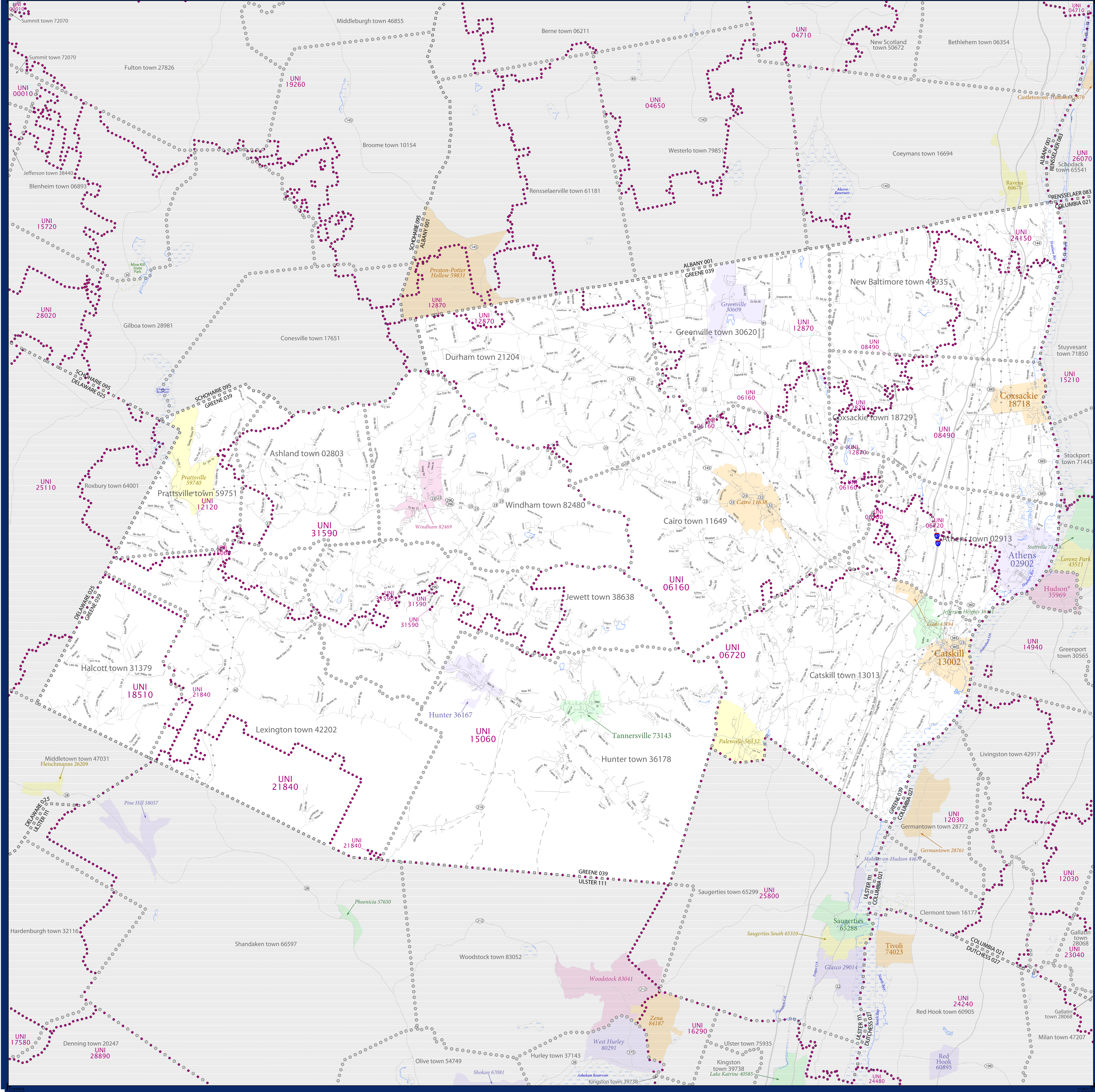


SCHOOL DISTRICT REFERENCE MAP (2010 CENSUS): Greene County, NY



LEGEND

SYMBOL DESCRIPTION	SYMBOL	SYMBOL DESCRIPTION	SYMBOL
Federal American Indian Reservation	[Dotted pattern]	Water Body	[Blue wavy line]
Off-Reservation Trust Land	[Dotted pattern]	Swamp or Marsh	[Green wavy line]
State American Indian Reservation	[Dotted pattern]	Glacier	[Blue wavy line]
Alaska Native Regional Corporation	[Dotted pattern]	Military	[Blue wavy line]
State (or statistically equivalent entity)	[Dotted pattern]	National or State Park, Forest, or Reservation Area	[Blue wavy line]
County (or statistically equivalent entity)	[Dotted pattern]	Inset Area	[Blue wavy line]
Minor Civil Division (MCD) ^{1,2}	[Dotted pattern]	Outside Subject Area	[Blue wavy line]
Consolidated City	[Dotted pattern]		
Incorporated Place ^{1,3}	[Dotted pattern]		
Census Designated Place (CDP) ¹	[Dotted pattern]		
Unified School District	[Purple dotted line]		
Secondary School District	[Orange dotted line]		
Elementary School District	[Green dotted line]		

Where state, county, and/or MCD boundaries coincide, the map shows the boundary symbol for only the highest-ranking of these boundaries.

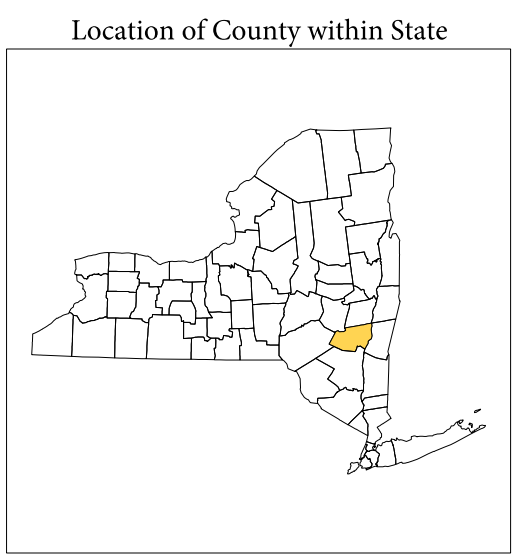
1 A "*" following an MCD name denotes a false MCD. A "*" following a place name indicates that a false MCD exists with the same name and FIPS code as the place; the false MCD label is not shown.

2 MCD boundaries are shown in the following states in which MCDs have functioning governments: Connecticut, Maine, Massachusetts, Michigan, Minnesota, New Hampshire, New Jersey, New York, Pennsylvania, Rhode Island, Vermont, and Wisconsin.

3 Place label color correlates to the place fill color.

SCHOOL DISTRICTS WITHIN COUNTY

TYPE	CODE	NAME
UNI	06100	Cairo-Durham Central School District
UNI	06720	Catskill Central School District
UNI	08400	Coxsackie-Athens Central School District
UNI	12120	Gilboa-Greenville Central School District
UNI	12870	Greenville Central School District
UNI	13000	Hunter-Tannersville Central School District
UNI	18510	Maugansville Central School District
UNI	21840	Omega Central School District
UNI	24150	Ravena-Coxsackie-Selkirk Central School District
UNI	31590	Windham-Ashland-Jewett Central School District



All legal boundaries and names are as of January 1, 2010. The boundaries shown on this map are for Census Bureau statistical data collection and tabulation purposes only; their depiction and designation for statistical purposes does not constitute a determination of jurisdictional authority or rights of ownership or entitlement.

Geographic Vintage: 2010 Census (reference date: January 1, 2010)
 Data Source: U.S. Census Bureau's MAINTIGR database (TAB100136)
 Map Created by Geography Division: December 10, 2010

U.S. DEPARTMENT OF COMMERCE Economics and Statistics Administration U.S. Census Bureau

Projection: Albers Equal Area Conic
 Datum: NAD 83
 Spheroid: GRS 80
 1st Standard Parallel: 41 14 01
 2nd Standard Parallel: 44 15 33
 Central Meridian: 75 46 13
 Latitude of Projection's Origin: 40 28 38
 False Easting: 0
 False Northing: 0

10 Kilometers

The plotted map scale is 1:90155

USCENSUSBUREAU



PARENT SHEET 1
 Total Sheets: 1
 Index Sheets: 0
 Parent Sheets: 1
 Inset Sheets: 0

NAME: Greene County (039)
 ENTITY TYPE: County or statistically equivalent entity
 ST: New York (36)

2010 SD MAP (PARENT)
 2010060001