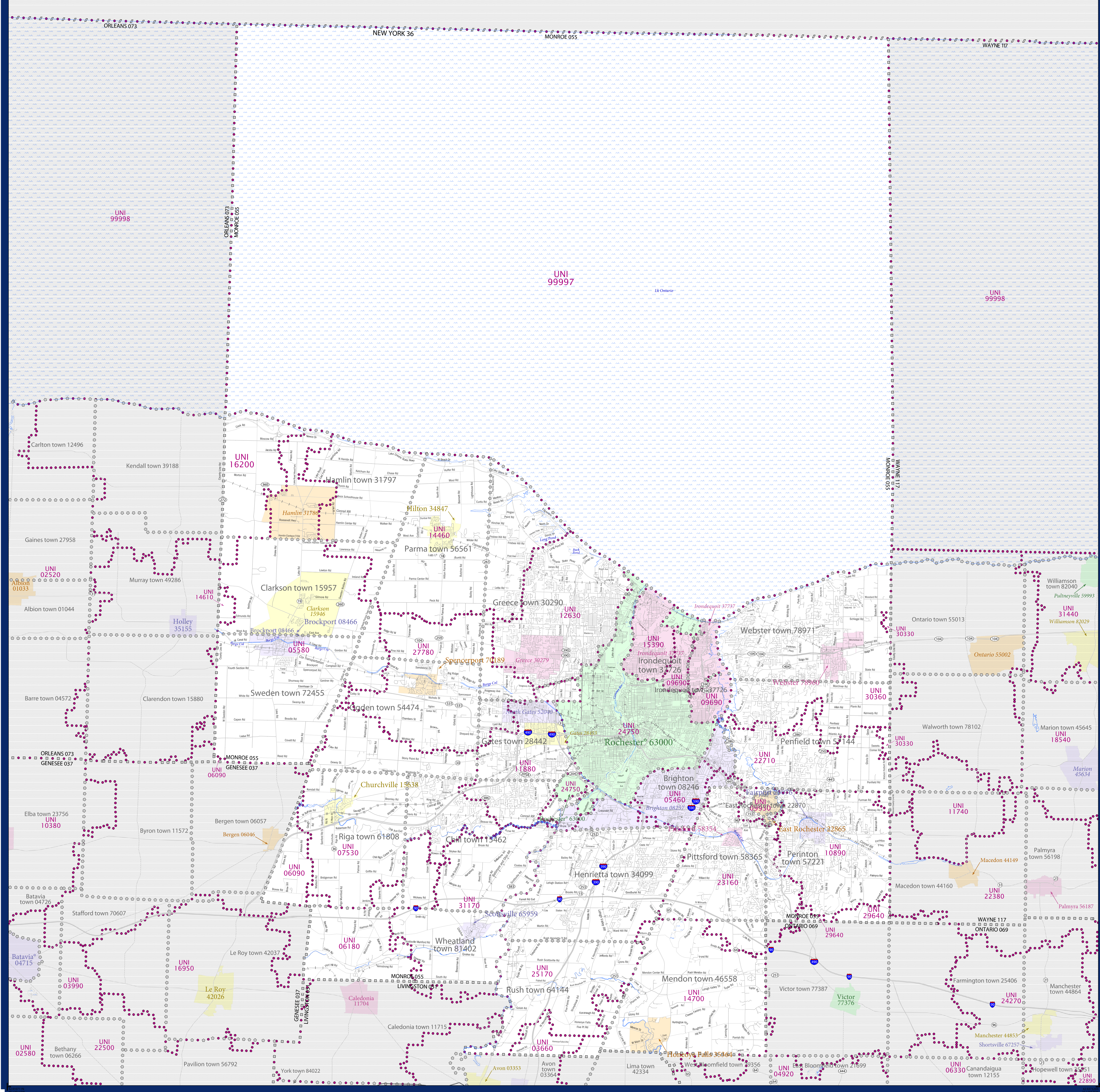


# SCHOOL DISTRICT REFERENCE MAP (2010 CENSUS): Monroe County, NY



### LEGEND

SYMBOL DESCRIPTION	SYMBOL	SYMBOL DESCRIPTION	SYMBOL
Federal American Indian Reservation	[Symbol]	Water Body	[Symbol]
Off-Reservation Trust Land	[Symbol]	Swamp or Marsh	[Symbol]
State American Indian Reservation	[Symbol]	Glacier	[Symbol]
Alaska Native Regional Corporation	[Symbol]	Military	[Symbol]
State (or statistically equivalent entity)	[Symbol]	National or State Park, Forest, or Reservation Area	[Symbol]
County (or statistically equivalent entity)	[Symbol]	Inset Area	[Symbol]
Minor Civil Division (MCD) <sup>1,2</sup>	[Symbol]	Outside Subject Area	[Symbol]
Consolidated City	[Symbol]		
Incorporated Place <sup>1,3</sup>	[Symbol]		
Census Designated Place (CDP) <sup>3</sup>	[Symbol]		
Unified School District	[Symbol]		
Secondary School District	[Symbol]		
Elementary School District	[Symbol]		

Where state, county, and/or MCD boundaries coincide, the map shows the boundary symbol for only the highest-ranking of these boundaries.

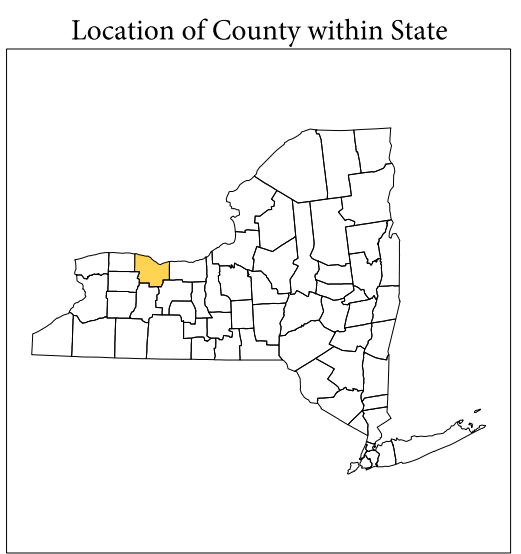
1 A "\*" following an MCD name denotes a false MCD. A "\*" following a place name indicates that a false MCD exists with the same name and FIPS code as the place; the false MCD label is not shown.

2 MCD boundaries are shown in the following states in which MCDs have functioning governments: Connecticut, Maine, Massachusetts, Michigan, Minnesota, New Hampshire, New Jersey, New York, Pennsylvania, Rhode Island, Vermont, and Wisconsin.

3 Place label color correlates to the place fill color.

### SCHOOL DISTRICTS WITHIN COUNTY

TYPE	CODE	NAME
UNI	0360	Avon Central School District
UNI	0546	Brighton Central School District
UNI	0550	Brockport Central School District
UNI	0600	Byron-Bergen Central School District
UNI	0610	Caledonia-Munford Central School District
UNI	0730	Churchville-Chili Central School District
UNI	0960	East Irondequoit Central School District
UNI	0990	East Rochester Union Free School District
UNI	1090	Fairport Central School District
UNI	1180	Gates-Chili Central School District
UNI	1260	Greece Central School District
UNI	1440	Hilton Central School District
UNI	1460	Holley Central School District
UNI	1470	Honeye Falls-Lima Central School District
UNI	1530	West Irondequoit Central School District
UNI	1620	Kendall Central School District
UNI	2270	Penfield Central School District
UNI	2310	Pittsford Central School District
UNI	2470	Rochester City School District
UNI	2510	Rush-Henrietta Central School District
UNI	2780	Spencerport Central School District
UNI	2960	Victor Central School District
UNI	3030	Wayne Central School District
UNI	3030	Webster Central School District
UNI	3110	Whitland-Chili Central School District
UNI	9997	School District Not Defined



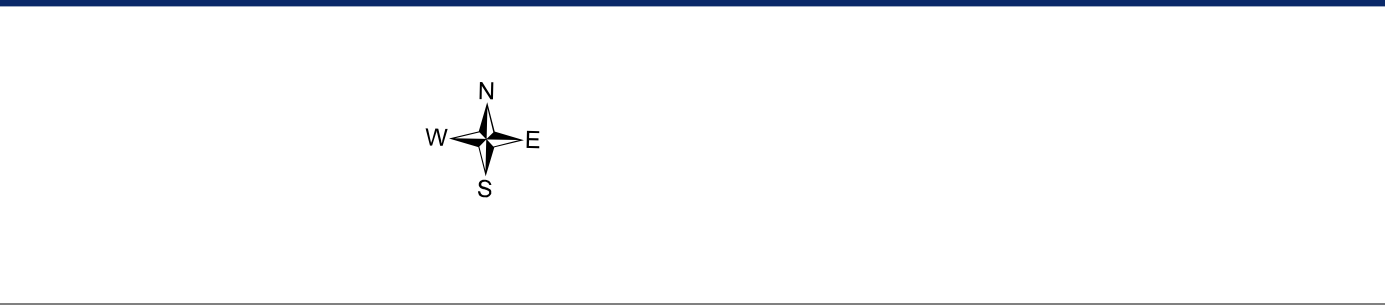
All legal boundaries and names are as of January 1, 2010. The boundaries shown on this map are for Census Bureau statistical data collection and tabulation purposes only; their depiction and designation for statistical purposes does not constitute a determination of jurisdictional authority or rights of ownership or entitlement.

Geographic: Vintage: 2010 Census (reference date: January 1, 2010)  
 Data Source: U.S. Census Bureau's MAINTIGR database (TAB00336)  
 Map Created by Geography Division: December 10, 2010

U.S. DEPARTMENT OF COMMERCE Economics and Statistics Administration U.S. Census Bureau

Projection: Albers Equal Area Conic  
 Datum: NAD 83  
 Spheroid: GRS 80  
 1st Standard Parallel: 41 14 01  
 2nd Standard Parallel: 44 15 33  
 Central Meridian: 75 46 13  
 Latitude of Projection's Origin: 40 28 38  
 False Easting: 0  
 False Northing: 0

The plotted map scale is 1:11970



PARENT SHEET 1  
 Total Sheets: 1  
 Index Sheets: 0  
 Parent Sheets: 1  
 Inset Sheets: 0

NAME: Monroe County (055)  
 ENTITY TYPE: County or statistically equivalent entity  
 ST: New York (36)

2010 SD MAP (PARENT)  
 201005001