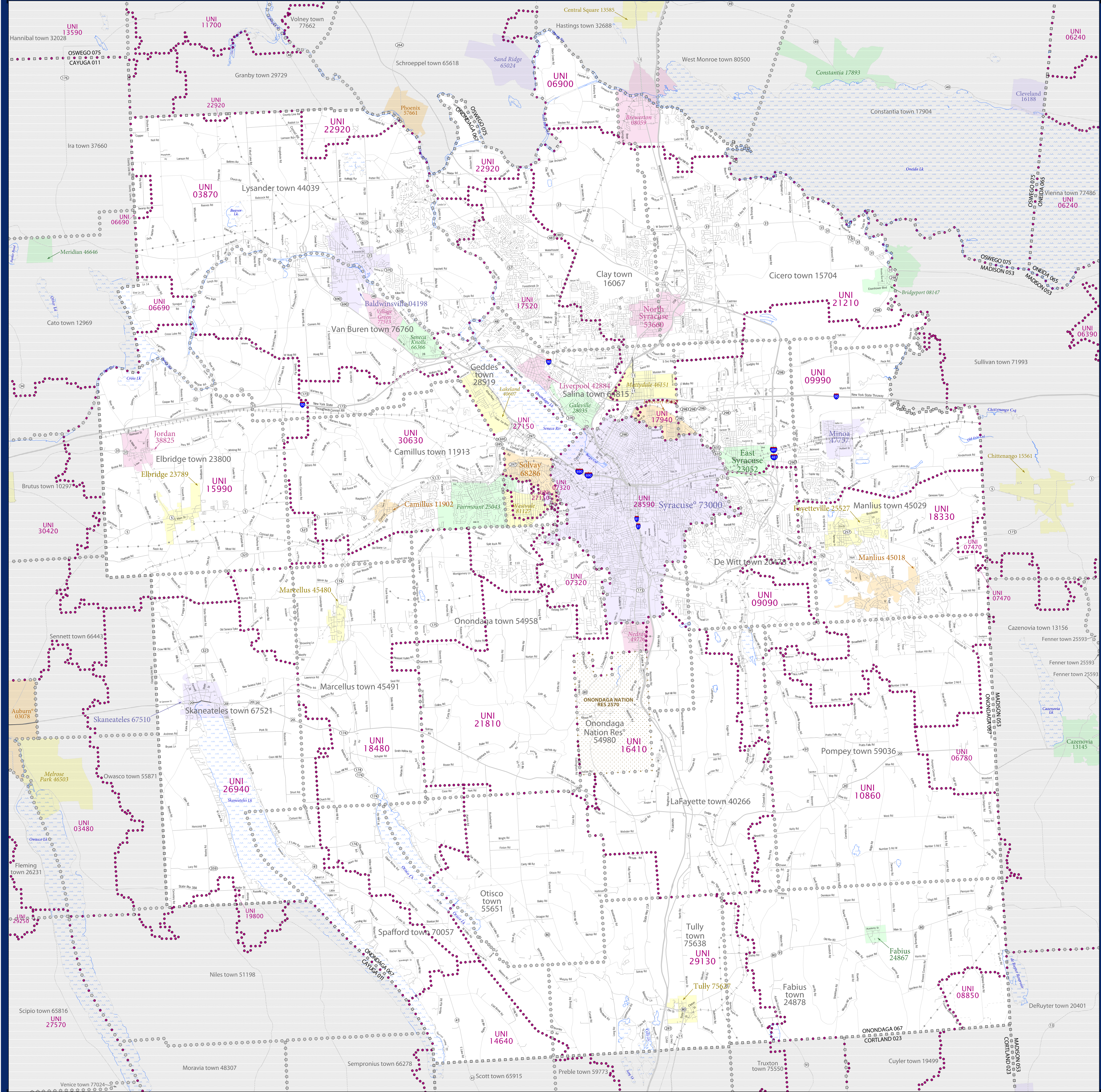


SCHOOL DISTRICT REFERENCE MAP (2010 CENSUS): Onondaga County, NY



SYMBOL DESCRIPTION		LEGEND	
Federal American Indian Reservation	[Symbol]	Water Body	[Symbol]
Off-Reservation Trust Land	[Symbol]	Swamp or Marsh	[Symbol]
State American Indian Reservation	[Symbol]	Glacier	[Symbol]
Alaska Native Regional Corporation	[Symbol]	Military	[Symbol]
State (or statistically equivalent entity)	[Symbol]	National or State Park, Forest, or Reservation Area	[Symbol]
County (or statistically equivalent entity)	[Symbol]	Inset Area	[Symbol]
Minor Civil Division (MCD) ^{1,2}	[Symbol]	Outside Subject Area	[Symbol]
Consolidated City	[Symbol]		
Incorporated Place ^{1,3}	[Symbol]		
Census Designated Place (CDP) ¹	[Symbol]		
Unified School District	[Symbol]		
Secondary School District	[Symbol]		
Elementary School District	[Symbol]		

Where state, county, and/or MCD boundaries coincide, the map shows the boundary symbol for only the highest-ranking of these boundaries.

1 A "*" following an MCD name denotes a false MCD. A "*" following a place name indicates that a false MCD exists with the same name and FIPS code as the place; the false MCD label is not shown.

2 MCD boundaries are shown in the following states in which MCDs have functioning governments: Connecticut, Maine, Massachusetts, Michigan, Minnesota, New Hampshire, New Jersey, New York, Pennsylvania, Rhode Island, Vermont, and Wisconsin.

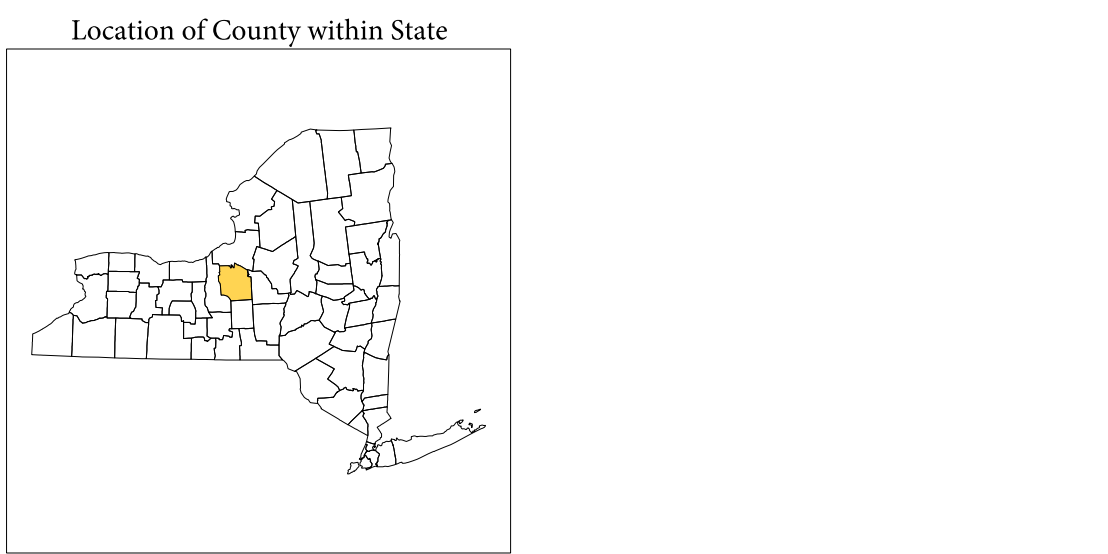
3 Place label color correlates to the place fill color.

SCHOOL DISTRICTS WITHIN COUNTY		
TYPE	CODE	NAME
UNI	03370	Baldwinsville Central School District
UNI	06690	Cato-Meridian Central School District
UNI	06780	Cazenovia Central School District
UNI	06900	Central Square Central School District
UNI	07120	Westhill Central School District
UNI	07470	Chittenango Central School District
UNI	08850	DeWitt Central School District
UNI	09090	Jamesville-DeWitt Central School District
UNI	09990	East Syracuse-Minoa Central School District
UNI	10860	Fabius-Pompey Central School District
UNI	14640	Hammer Central School District
UNI	15990	Jordan-Elbridge Central School District
UNI	16410	Lafayette Central School District
UNI	17520	Liverpool Central School District
UNI	17940	Lyncourt Union Free School District
UNI	18330	Fayetteville-Manlius Central School District
UNI	18480	Marengo Central School District
UNI	18800	Moravia Central School District
UNI	21210	North Syracuse Central School District
UNI	21810	Onondaga Central School District
UNI	22920	Phoenix Central School District
UNI	26940	Skaneateles Central School District
UNI	27150	Solvay Union Free School District
UNI	28590	Syracuse City School District
UNI	29130	Tully Central School District
UNI	30630	West Genesee Central School District

SYMBOL	DESCRIPTION	SYMBOL	DESCRIPTION
[Symbol]	Interstate	[Symbol]	Pleasant Lake
[Symbol]	U.S. Highway	[Symbol]	Onondaga Swamp
[Symbol]	State Highway	[Symbol]	Bering Glacier
[Symbol]	Other Road	[Symbol]	Fort Belvoir
[Symbol]	4WD Trail, Stamen, Alley, Walkway, or Ferry	[Symbol]	Yosemite NP
[Symbol]	Railroad	[Symbol]	A
[Symbol]	Pipeline or Power Line	[Symbol]	
[Symbol]	Ridge or Fence	[Symbol]	
[Symbol]	Property Line	[Symbol]	
[Symbol]	Nonvisible Boundary or Feature Not Elsewhere Classified	[Symbol]	

UNI	NAME
UNI 03370	Baldwinsville
UNI 06690	Cato-Meridian
UNI 06780	Cazenovia
UNI 06900	Central Square
UNI 07120	Westhill
UNI 07470	Chittenango
UNI 08850	DeWitt
UNI 09090	Jamesville-DeWitt
UNI 09990	East Syracuse-Minoa
UNI 10860	Fabius-Pompey
UNI 14640	Hammer
UNI 15990	Jordan-Elbridge
UNI 16410	Lafayette
UNI 17520	Liverpool
UNI 17940	Lyncourt Union Free
UNI 18330	Fayetteville-Manlius
UNI 18480	Marengo
UNI 18800	Moravia
UNI 21210	North Syracuse
UNI 21810	Onondaga
UNI 22920	Phoenix
UNI 26940	Skaneateles
UNI 27150	Solvay Union Free
UNI 28590	Syracuse City
UNI 29130	Tully
UNI 30630	West Genesee

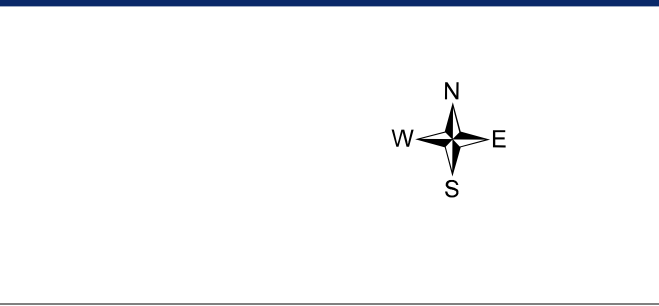
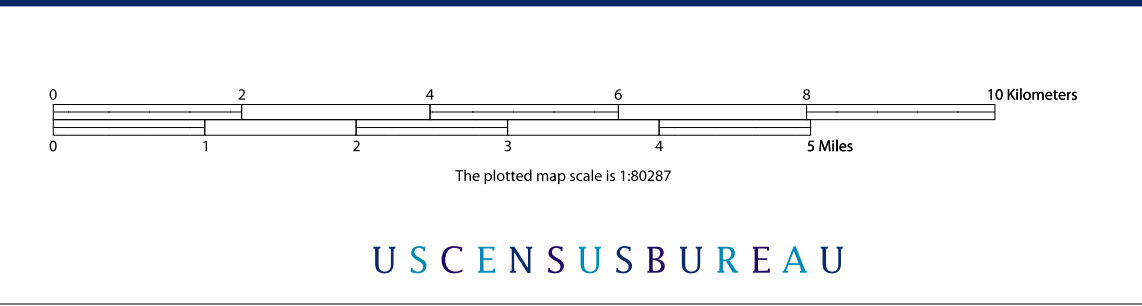
UNI	NAME
UNI 03420	Brutus
UNI 03480	Owasco
UNI 03870	Lysander
UNI 06240	Constantia
UNI 06390	Clay
UNI 06990	Clayton
UNI 07320	Onondaga
UNI 07470	Chittenango
UNI 07740	DeWitt
UNI 07750	DeWitt
UNI 07760	DeWitt
UNI 07770	DeWitt
UNI 07780	DeWitt
UNI 07790	DeWitt
UNI 07800	DeWitt
UNI 07810	DeWitt
UNI 07820	DeWitt
UNI 07830	DeWitt
UNI 07840	DeWitt
UNI 07850	DeWitt
UNI 07860	DeWitt
UNI 07870	DeWitt
UNI 07880	DeWitt
UNI 07890	DeWitt
UNI 07900	DeWitt
UNI 07910	DeWitt
UNI 07920	DeWitt
UNI 07930	DeWitt
UNI 07940	DeWitt
UNI 07950	DeWitt
UNI 07960	DeWitt
UNI 07970	DeWitt
UNI 07980	DeWitt
UNI 07990	DeWitt



All legal boundaries and names are as of January 1, 2010. The boundaries shown on this map are for Census Bureau's statistical data collection and tabulation purposes only; their depiction and designation for statistical purposes does not constitute a determination of jurisdictional authority or rights of ownership or entitlement.

Geographic: Vintage: 2010 Census (reference date: January 1, 2010)
 Data Source: U.S. Census Bureau's MA7/TIGER database (TAB010136)
 Map Created by Geography Division: February 10, 2011

Projection: Albers Equal Area Conic
 Datum: NAD83
 Spheroid: GRS 80
 1st Standard Parallel: 44 14 01
 2nd Standard Parallel: 44 15 33
 Central Meridian: 75 46 13
 Latitude of Projection's Origin: 40 28 38
 False Easting: 0
 False Northing: 0



PARENT SHEET 1
 Total Sheets: 1
 Index Sheets: 0
 Parent Sheets: 1
 Inset Sheets: 0

NAME: Onondaga County (067)
 ENTITY TYPE: County or statistically equivalent entity
 ST: New York (36)