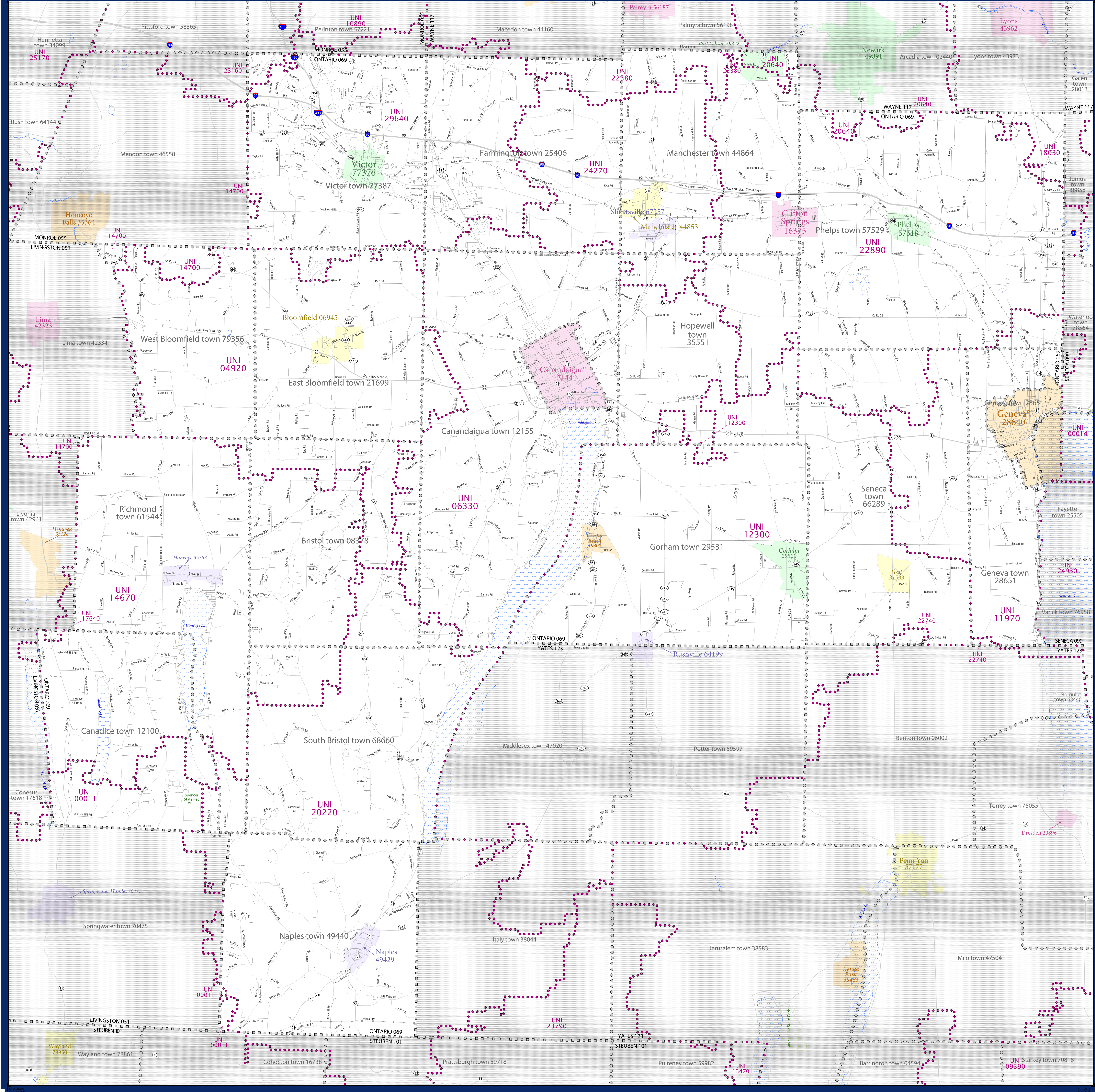


# SCHOOL DISTRICT REFERENCE MAP (2010 CENSUS): Ontario County, NY



### LEGEND

SYMBOL DESCRIPTION	SYMBOL	SYMBOL DESCRIPTION	SYMBOL
Federal American Indian Reservation	[Pattern]	Water Body	[Symbol]
Off-Reservation Trust Land	[Pattern]	Swamp or Marsh	[Symbol]
State American Indian Reservation	[Pattern]	Glacier	[Symbol]
Alaska Native Regional Corporation	[Pattern]	Military	[Symbol]
State (or statistically equivalent entity)	[Pattern]	National or State Park, Forest, or Recreation Area	[Symbol]
County (or statistically equivalent entity)	[Pattern]	Inset Area	[Symbol]
Minor Civil Division (MCD) <sup>1,2</sup>	[Pattern]	Outside Subject Area	[Symbol]
Consolidated City	[Pattern]		
Incorporated Place <sup>1,3</sup>	[Color]		
Census Designated Place (CDP) <sup>1</sup>	[Color]		
Unified School District	[Color]		
Secondary School District	[Color]		
Elementary School District	[Color]		

Where state, county, and/or MCD boundaries coincide, the map shows the boundary symbol for only the highest-ranking of these boundaries.

1 A "\*" following an MCD name denotes a false MCD. A "\*" following a place name indicates that a false MCD exists with the same name and FIPS code as the place; the false MCD label is not shown.

2 MCD boundaries are shown in the following states in which MCDs have functioning governments: Connecticut, Maine, Massachusetts, Michigan, Minnesota, New Hampshire, New Jersey, New York, Pennsylvania, Rhode Island, Vermont, and Wisconsin.

3 Place label color correlates to the place fill color.

### SCHOOL DISTRICTS WITHIN COUNTY

TYPE	CODE	NAME
UNI	0001	Wayland-Cohocton Central School District
UNI	04920	Bloomfield Central School District
UNI	06330	Canandaigua City School District
UNI	11970	Geneva City School District
UNI	12300	Manlius-Whitman Central School District
UNI	14670	Honeye Central School District
UNI	14700	Honeye Falls-Lima Central School District
UNI	17640	Livonia Central School District
UNI	18030	Lyons Central School District
UNI	20220	Naples Central School District
UNI	20640	Naples Central School District
UNI	22380	Palmyra-Macedon Central School District
UNI	22740	Penn Yan Central School District
UNI	22890	Phelps-Clifton Springs Central School District
UNI	23160	Pittsford Central School District
UNI	24270	Manchester-Shoreville Central School District
UNI	26640	Victor Central School District



All legal boundaries and names are as of January 1, 2010. The boundaries shown on this map are for Census Bureau's statistical data collection and tabulation purposes only; their depiction and designation for statistical purposes does not constitute a determination of jurisdictional authority or rights of ownership or entitlement.

Geographic: Vintage: 2010; Census (reference date): January 1, 2010  
 Data Source: U.S. Census Bureau's MAINTIGR database (TAB000336)  
 Map Created by Geography Division: December 10, 2010

U.S. DEPARTMENT OF COMMERCE Economics and Statistics Administration U.S. Census Bureau

Projection: Albers Equal Area Conic  
 Datum: NAD 83  
 Spheroid: GRS 80  
 1st Standard Parallel: 41 14 41  
 2nd Standard Parallel: 44 15 33  
 Central Meridian: 75 46 13  
 Latitude of Projection's Origin: 40 28 38  
 False Easting: 0  
 False Northing: 0

Scale: 1:121,432

U.S. Census Bureau

PARENT SHEET 1  
 Total Sheets: 1  
 Index Sheets: 0  
 Parent Sheets: 1  
 Inset Sheets: 0

NAME: Ontario County (069)  
 ENTITY TYPE: County or statistically equivalent entity  
 ST: New York (36)