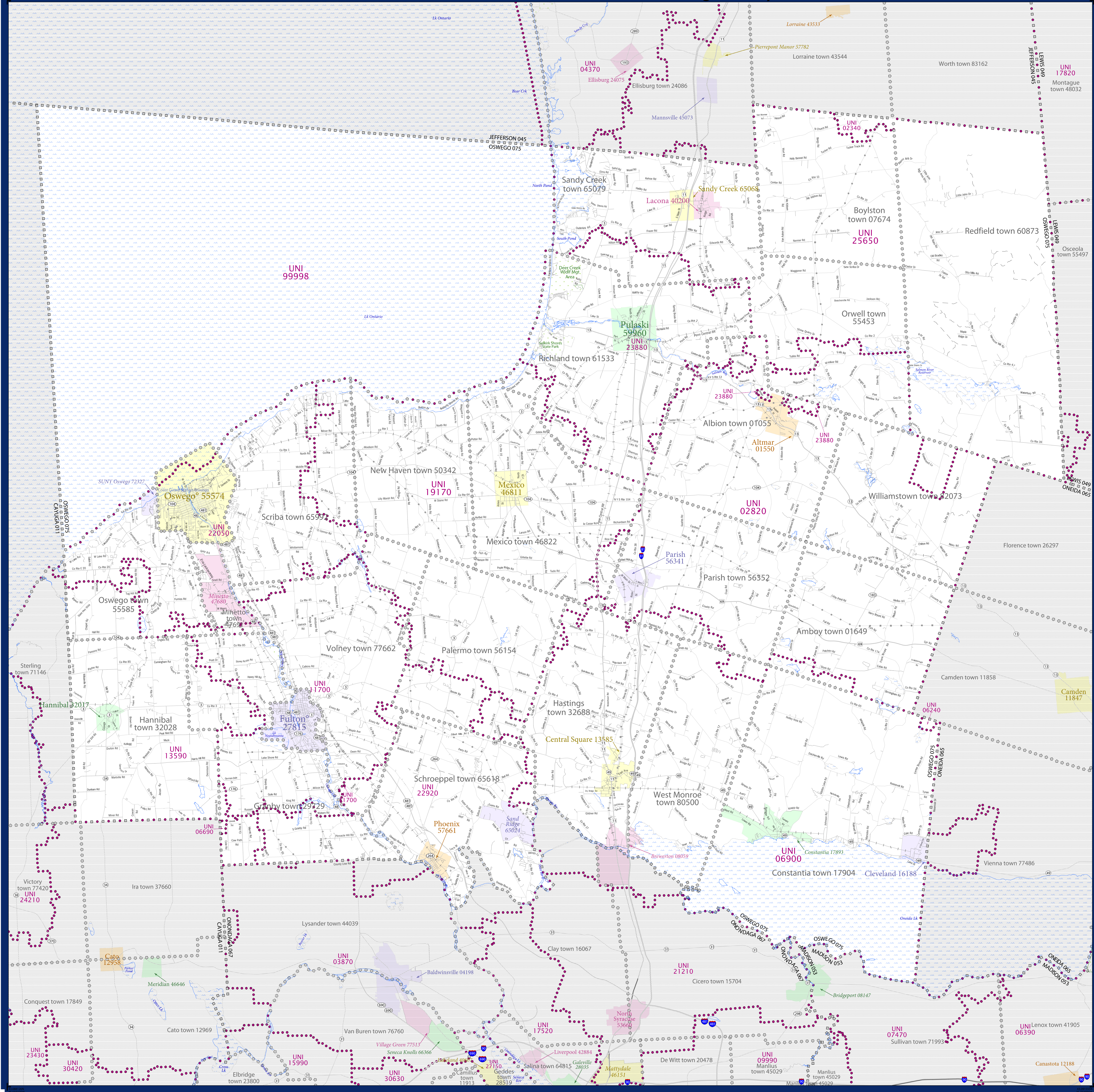


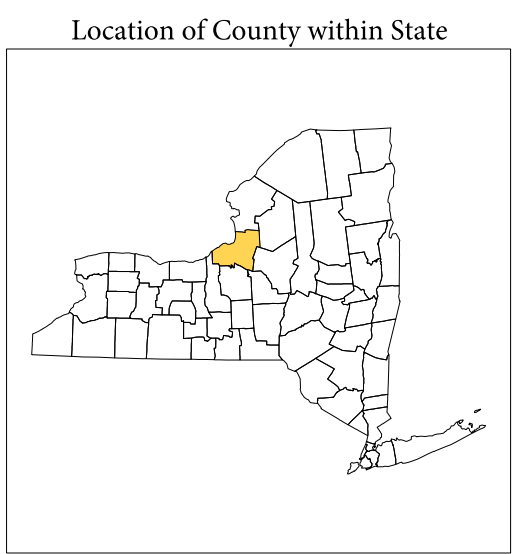
SCHOOL DISTRICT REFERENCE MAP (2010 CENSUS): Oswego County, NY



SYMBOL DESCRIPTION		LEGEND	
Federal American Indian Reservation	[Symbol]	L'ANSE RES 1880	[Symbol]
Off-Reservation Trust Land	[Symbol]	T1880	[Symbol]
State American Indian Reservation	[Symbol]	Tama Res 4125	[Symbol]
Alaska Native Regional Corporation	[Symbol]	NANA ANRC 52120	[Symbol]
State (or statistically equivalent entity)	[Symbol]	NEW YORK 36	[Symbol]
County (or statistically equivalent entity)	[Symbol]	ERIE 029	[Symbol]
Minor Civil Division (MCD) ^{1,2}	[Symbol]	Bristol town 07485	[Symbol]
Consolidated City	[Symbol]	MILFORD 47500	[Symbol]
Incorporated Place ³	[Symbol]	Davis 18100	[Symbol]
Census Designated Place (CDP) ³	[Symbol]	Incline Village 35100	[Symbol]
Unified School District	[Symbol]	UNI 03370	[Symbol]
Secondary School District	[Symbol]	SEC 99965	[Symbol]
Elementary School District	[Symbol]	ELM 02220	[Symbol]

- Where state, county, and/or MCD boundaries coincide, the map shows the boundary symbol for only the highest-ranking of these boundaries.
- 1 A "*" following an MCD name denotes a false MCD. A "*" following a place name indicates that a false MCD exists with the same name and FIPS code as the place; the false MCD label is not shown.
 - 2 MCD boundaries are shown in the following states in which MCDs have functioning governments: Connecticut, Maine, Massachusetts, Michigan, Minnesota, New Hampshire, New Jersey, New York, Pennsylvania, Rhode Island, Vermont, and Wisconsin.
 - 3 Place label color correlates to the place fill color.

SCHOOL DISTRICTS WITHIN COUNTY		
TYPE	CODE	NAME
UNI	02180	South Jefferson Central School District
UNI	02820	Altmar-Parish-Williamstown Central School District
UNI	06240	Camden Central School District
UNI	06600	Cato Meridian Central School District
UNI	06900	Central Square Central School District
UNI	11700	Fulton City School District
UNI	13500	Hannibal Central School District
UNI	19170	Mexico Central School District
UNI	22050	Oswego City School District
UNI	22920	Phoenix Central School District
UNI	23880	Pulaski Central School District
UNI	25650	Sandy Creek Central School District
UNI	99998	School District Not Defined (Water)



All legal boundaries and names are as of January 1, 2010. The boundaries shown on this map are for Census Bureau's statistical data collection and tabulation purposes only; their depiction and designation for statistical purposes does not constitute a determination of jurisdictional authority or rights of ownership or entitlement.

Geographic: Vintage: 2010 Census (reference date: January 1, 2010)
 Data Source: U.S. Census Bureau's MAINTIGR database (TAB100136)
 Map Created by Geography Division: February 10, 2011

U.S. DEPARTMENT OF COMMERCE Economics and Statistics Administration U.S. Census Bureau

Projection: Albers Equal Area Conic
 Datum: NAD 83
 Spheroid: GRS 80
 1st Standard Parallel: 41 14 01
 2nd Standard Parallel: 44 15 33
 Central Meridian: 75 46 13
 Latitude of Projection's Origin: 40 28 38
 False Easting: 0
 False Northing: 0

The plotted map scale is 1:100,000

U.S. CENSUS BUREAU

PARENT SHEET 1
 Total Sheets: 1
 Index Sheets: 0
 Parent Sheets: 1
 Inset Sheets: 0

NAME: Oswego County (075)
 ENTITY TYPE: County or statistically equivalent entity
 ST: New York (36)

2010 SD MAP (PARENT)
 2010010001