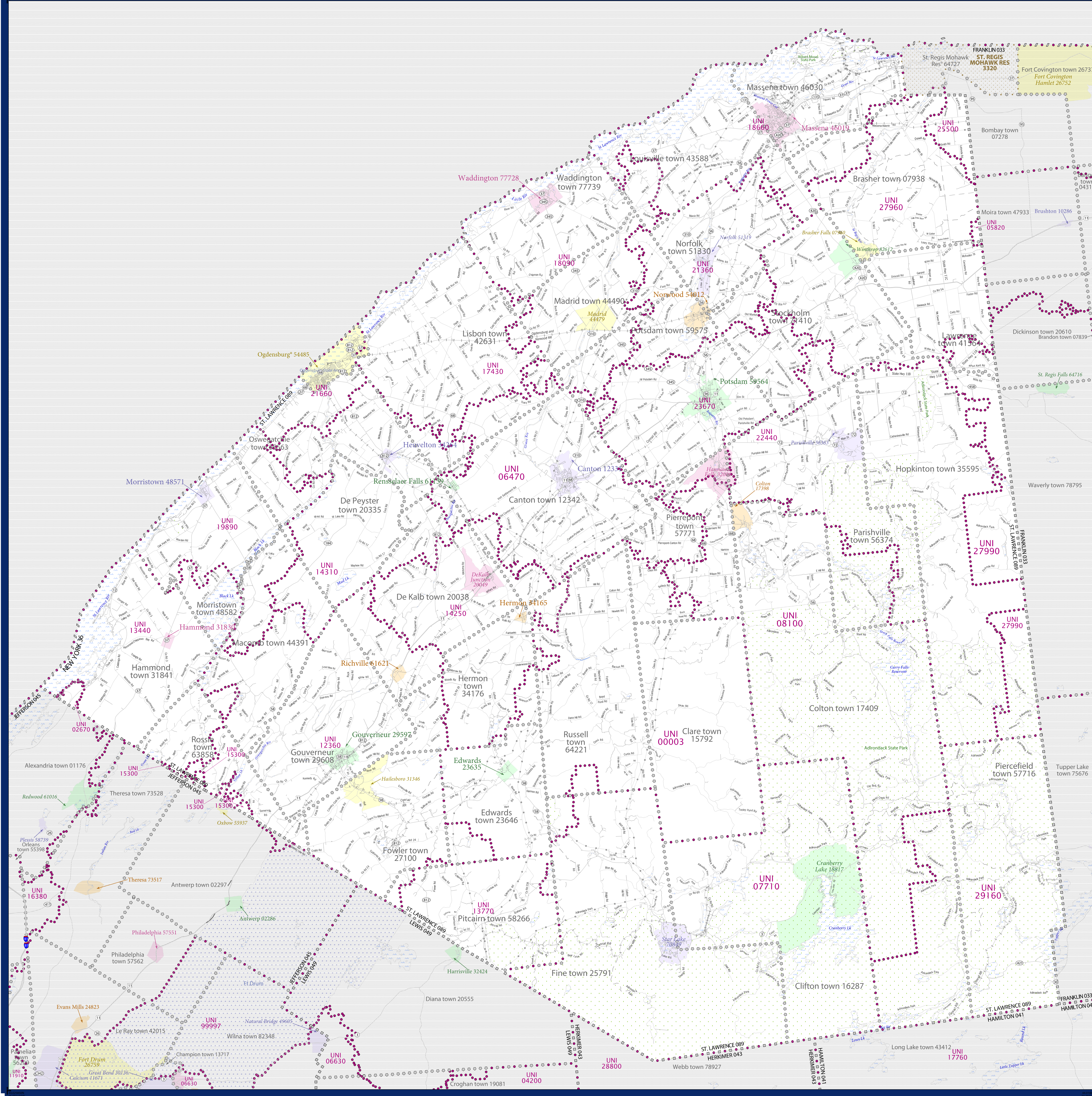


SCHOOL DISTRICT REFERENCE MAP (2010 CENSUS): St. Lawrence County, NY



LEGEND

SYMBOL DESCRIPTION	SYMBOL	SYMBOL DESCRIPTION	SYMBOL
Federal American Indian Reservation	[Symbol]	Water Body	[Symbol]
Off-Reservation Trust Land	[Symbol]	Swamp or Marsh	[Symbol]
State American Indian Reservation	[Symbol]	Glacier	[Symbol]
Alaska Native Regional Corporation	[Symbol]	Military	[Symbol]
State (or statistically equivalent entity)	[Symbol]	National or State Park, Forest, or Reservation Area	[Symbol]
County (or statistically equivalent entity)	[Symbol]	Inset Area	[Symbol]
Minor Civil Division (MCD) ^{1,2}	[Symbol]	Outside Subject Area	[Symbol]
Consolidated City	[Symbol]		
Incorporated Place ^{1,3}	[Symbol]		
Census Designated Place (CDP) ¹	[Symbol]		
Unified School District	[Symbol]		
Secondary School District	[Symbol]		
Elementary School District	[Symbol]		

Where state, county, and/or MCD boundaries coincide, the map shows the boundary symbol for only the highest-ranking of these boundaries.

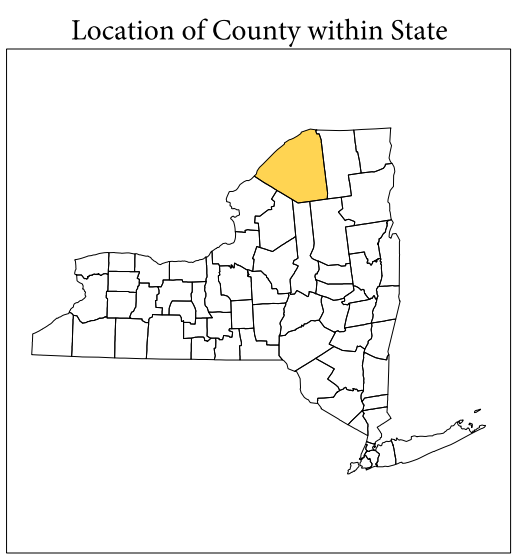
1 A "*" following an MCD name denotes a false MCD. A "*" following a place name indicates that a false MCD exists with the same name and FIPS code as the place; the false MCD label is not shown.

2 MCD boundaries are shown in the following states in which MCDs have functioning governments: Connecticut, Maine, Massachusetts, Michigan, Minnesota, New Hampshire, New Jersey, New York, Pennsylvania, Rhode Island, Vermont, and Wisconsin.

3 Place label color correlates to the place fill color.

SCHOOL DISTRICTS WITHIN COUNTY

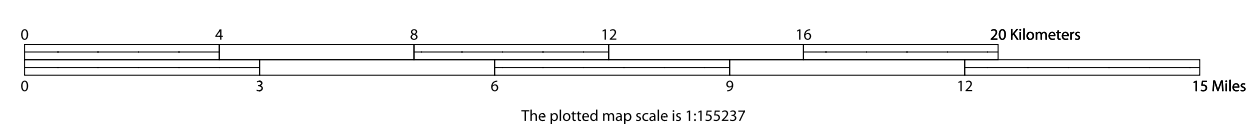
TYPE	CODE	NAME
UNI	02023	Edwards-Knox Central School District
UNI	02670	Alexandria Central School District
UNI	02670	Brasher Falls Central School District
UNI	06470	Canton Central School District
UNI	07710	Colton-Pierrepont Central School District
UNI	08100	Gouverneur Central School District
UNI	12340	Hammond Central School District
UNI	13770	Herkimer Central School District
UNI	14250	Herkimer-DeKalb Central School District
UNI	14310	Hewittville Central School District
UNI	15300	Indian River Central School District
UNI	17430	Lisbon Central School District
UNI	18000	Madrid-Waddington Central School District
UNI	18660	Massena Central School District
UNI	19890	Morristown Central School District
UNI	21360	Norwood-Herkimer Central School District
UNI	21660	Ogdensburg City School District
UNI	22460	Parishville-Hopkinton Central School District
UNI	23670	Potsdam Central School District
UNI	25500	Salmon River Central School District
UNI	27960	Brasher Falls Central School District
UNI	27990	St. Regis Falls Central School District
UNI	29160	Tupper Lake Central School District



All legal boundaries and names are as of January 1, 2010. The boundaries shown on this map are for Census Bureau statistical data collection and tabulation purposes only; their depiction and designation for statistical purposes does not constitute a determination of jurisdictional authority or rights of ownership or entitlement.

Geographic Vintage: 2010 Census (reference date: January 1, 2010)
 Data Source: U.S. Census Bureau's MAINTIGER database (TAB100336)
 Map Created by Geography Division: December 10, 2010

Projection: Albers Equal Area Conic
 Datum: NAD83
 Spheroid: GRS 80
 1st Standard Parallel: 41 14 01
 2nd Standard Parallel: 44 15 33
 Central Meridian: 75 46 13
 Latitude of Projection's Origin: 40 28 38
 False Easting: 0
 False Northing: 0



PARENT SHEET 1
 Total Sheets: 1
 Index Sheets: 0
 Parent Sheets: 0
 Inset Sheets: 0

NAME: St. Lawrence County (089)
 ENTITY TYPE: County or statistically equivalent entity
 ST: New York (36)