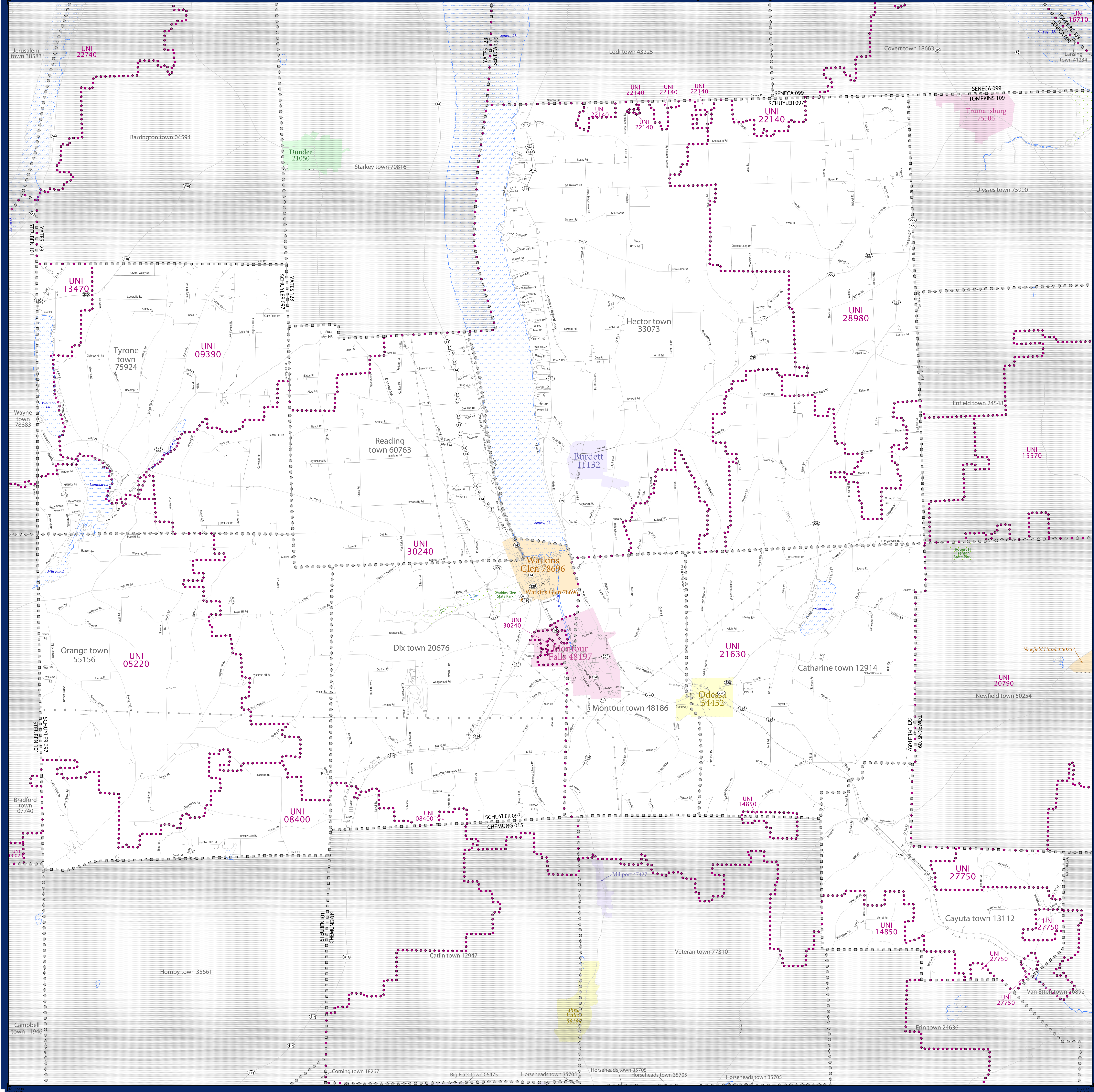


SCHOOL DISTRICT REFERENCE MAP (2010 CENSUS): Schuyler County, NY



LEGEND

SYMBOL DESCRIPTION	SYMBOL	LABEL STYLE
Federal American Indian Reservation	[Pattern]	L'ANSE RES 1880
Off-Reservation Trust Land	[Pattern]	T1880
State American Indian Reservation	[Pattern]	Tama Res 4125
Alaska Native Regional Corporation	[Pattern]	NANA ANRC 52120
State (or statistically equivalent entity)	[Pattern]	NEW YORK 36
County (or statistically equivalent entity)	[Pattern]	ERIE 029
Misc Civil Division (MCD) ^{1,2}	[Pattern]	Bristol town 07485
Consolidated City	[Pattern]	MILFORD 47500
Incorporated Place ³	[Pattern]	Davis 18100
Census Designated Place (CDP) ³	[Pattern]	Incline Village 35100
Unified School District	[Pattern]	UNI 03370
Secondary School District	[Pattern]	SEC 99965
Elementary School District	[Pattern]	ELM 02220

DESCRIPTION	SYMBOL	DESCRIPTION	SYMBOL
Interstate	[Symbol]	Water Body	[Symbol]
U.S. Highway	[Symbol]	Swamp or Marsh	[Symbol]
State Highway	[Symbol]	Glacier	[Symbol]
Other Road	[Symbol]	Military	[Symbol]
4WD Trail, Stoney, Alley, Walkway, or Ferry	[Symbol]	National or State Park, Forest, or Recreation Area	[Symbol]
Railroad	[Symbol]	Inset Area	[Symbol]
Pipeline or Power Line	[Symbol]	Outside Subject Area	[Symbol]
Ridge or Fence	[Symbol]		
Property Line	[Symbol]		
Nonvisible Boundary or Feature Not Elsewhere Classified	[Symbol]		

Where state, county, and/or MCD boundaries coincide, the map shows the boundary symbol for only the highest-ranking of these boundaries.

1 A "*" following an MCD name denotes a false MCD. A "*" following a place name indicates that a false MCD exists with the same name and FIPS code as the place; the false MCD label is not shown.

2 MCD boundaries are shown in the following states in which MCDs have functioning governments: Connecticut, Maine, Massachusetts, Michigan, Minnesota, New Hampshire, New Jersey, New York, Pennsylvania, Rhode Island, Vermont, and Wisconsin.

3 Place label color correlates to the place fill color.

SCHOOL DISTRICTS WITHIN COUNTY

TYPE	CODE	NAME
UNI	03370	Bradford Central School District
UNI	08400	Corning City School District
UNI	09100	Dundee Central School District
UNI	13470	Hammondsport Central School District
UNI	14850	Horseheads Central School District
UNI	21630	Odesa-Montour Central School District
UNI	22140	South Seneca Central School District
UNI	27750	Spencer-Van Etten Central School District
UNI	28950	Trumansburg Central School District
UNI	30240	Watkins Glen Central School District



All legal boundaries and names are as of January 1, 2010. The boundaries shown on this map are for Census Bureau statistical data collection and tabulation purposes only; their depiction and designation for statistical purposes does not constitute a determination of jurisdictional authority or rights of ownership or entitlement.

Geographic Vintage: 2010 Census (reference date: January 1, 2010)
 Data Source: U.S. Census Bureau's MAINTIGR database (TAB000336)
 Map Created by Geography Division: December 10, 2010

U.S. DEPARTMENT OF COMMERCE Economics and Statistics Administration U.S. Census Bureau

Projection: Albers Equal Area Conic
 Datum: NAD83
 Spheroid: GRS 80
 1st Standard Parallel: 41 14 01
 2nd Standard Parallel: 44 15 33
 Central Meridian: 75 46 13
 Latitude of Projection's Origin: 40 28 38
 False Easting: 0
 False Northing: 0

The plotted map scale is 1:57612

PARENT SHEET 1
 Total Sheets: 1
 Index Sheets: 0
 Parent Sheets: 1
 Inset Sheets: 0

NAME: Schuyler County (097)
 ENTITY TYPE: County or statistically equivalent entity
 ST: New York (36)

2010 SD MAP (PARENT)
 2010/06/09/01