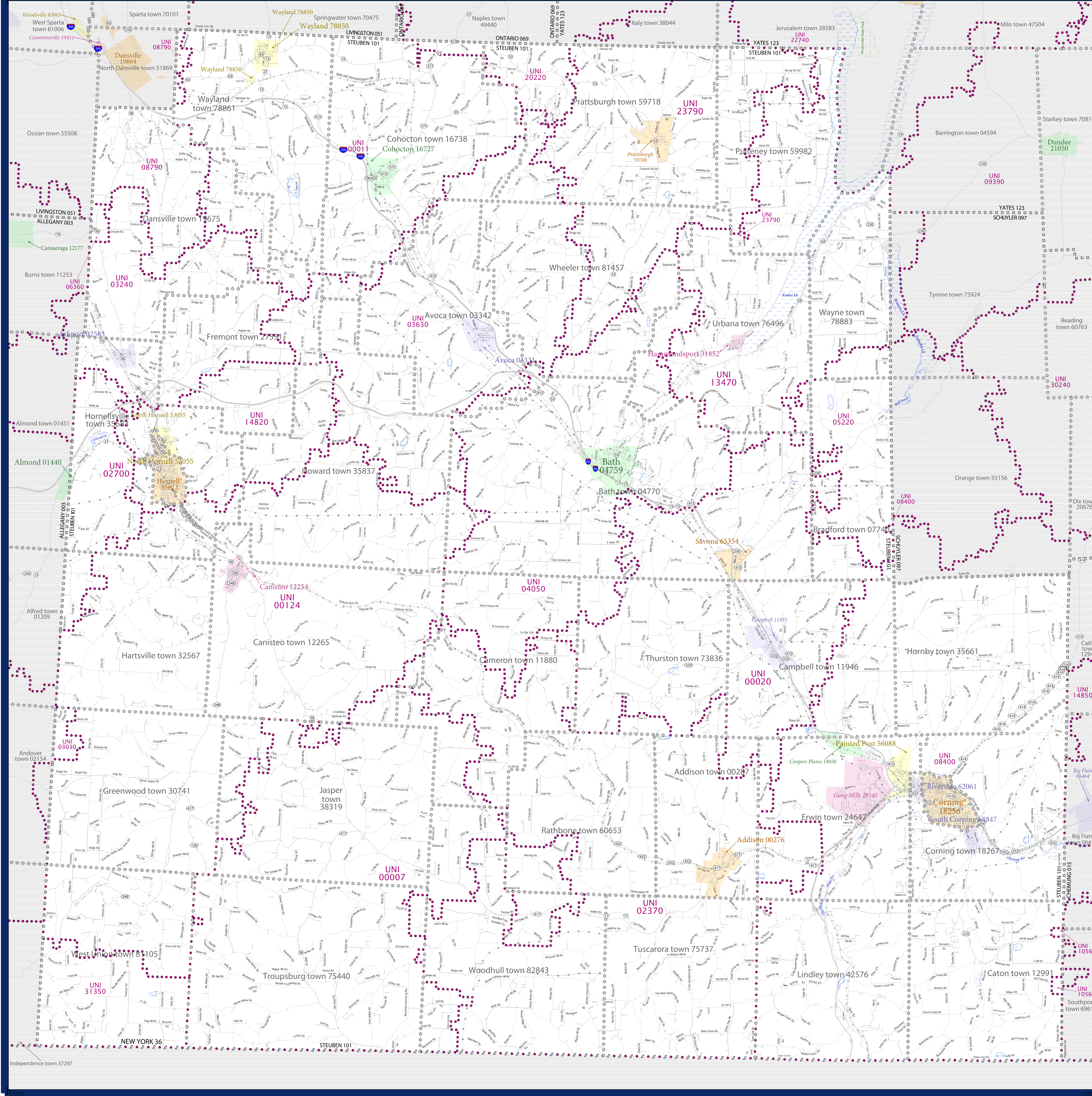


SCHOOL DISTRICT REFERENCE MAP (2010 CENSUS): Steuben County, NY



LEGEND

SYMBOL/DESCRIPTION	SYMBOL	SYMBOL	SYMBOL
Federal American Indian Reservation	[Dotted pattern]	L'ANSE RES 1880	[Blue fill]
Off-Reservation Trust Land	[Dotted pattern]	T1880	[Blue fill]
State American Indian Reservation	[Dotted pattern]	Tama Res 4125	[Blue fill]
Alaska Native Regional Corporation	[Dotted pattern]	NANA ANRC 52120	[Blue fill]
State (or statistically equivalent entity)	[Dotted pattern]	NEW YORK 36	[Blue fill]
County (or statistically equivalent entity)	[Dotted pattern]	ERIE 029	[Blue fill]
Minor Civil Division (MCD) ^{1,2}	[Dotted pattern]	Bristol town 07485	[Blue fill]
Consolidated City	[Dotted pattern]	MILFORD 47500	[Blue fill]
Incorporated Place ^{1,3}	[Dotted pattern]	Davis 18100	[Blue fill]
Census Designated Place (CDP) ¹	[Dotted pattern]	Incline Village 35100	[Blue fill]
Unified School District	[Dotted pattern]	UNI 03370	[Blue fill]
Secondary School District	[Dotted pattern]	SEC 99965	[Blue fill]
Elementary School District	[Dotted pattern]	ELM 02220	[Blue fill]

DESCRIPTION	SYMBOL	DESCRIPTION	SYMBOL
Interstate	[Thick blue line]	Water Body	[Blue fill]
U.S. Highway	[Thin blue line]	Swamp or Marsh	[Green fill]
State Highway	[Thin blue line]	Glacier	[Blue fill]
Other Road	[Thin blue line]	Military	[Blue fill]
4WD Trail, Stewary, Alley, Walkway, or Ferry	[Thin blue line]	National or State Park, Forest, or Recreation Area	[Green fill]
Railroad	[Black line with cross-ticks]	Inset Area	[Blue fill]
Pipeline or Power Line	[Thin black line]	Outside Subject Area	[Blue fill]
Ridge or Fence	[Thin black line]		
Property Line	[Thin black line]		
Nonvisible Boundary or Feature Not Elsewhere Classified	[Thin black line]		

Where state, county, and/or MCD boundaries coincide, the map shows the boundary symbol for only the highest-ranking of these boundaries.

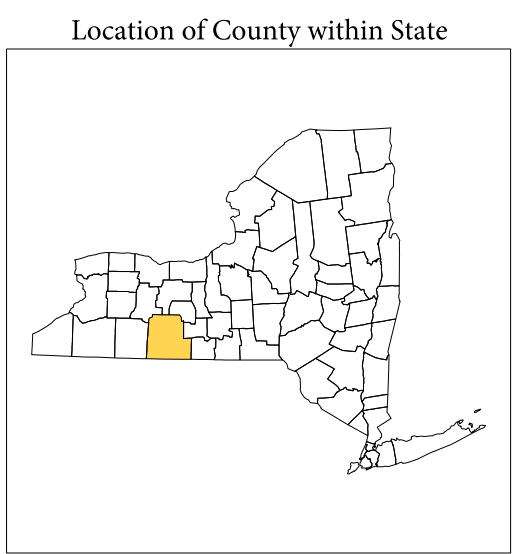
1 A "*" following an MCD name denotes a false MCD. A "*" following a place name indicates that a false MCD exists with the same name and FIPS code as the place; the false MCD label is not shown.

2 MCD boundaries are shown in the following states in which MCDs have functioning governments: Connecticut, Maine, Massachusetts, Michigan, Minnesota, New Hampshire, New Jersey, New York, Pennsylvania, Rhode Island, Vermont, and Wisconsin.

3 Place label color correlates to the place fill color.

SCHOOL DISTRICTS WITHIN COUNTY

TYPE	CODE	NAME
UNI	00007	Jasper-Troupsburg Central School District
UNI	00011	Wayland-Cohocton Central School District
UNI	00020	Campbell-Savona Central School District
UNI	00124	Canisteo-Greenwood Central School District
UNI	02370	Alfred-Almond Central School District
UNI	03030	Andover Central School District
UNI	03240	Arkport Central School District
UNI	03630	Avoca Central School District
UNI	04050	Bath Central School District
UNI	05220	Bradford Central School District
UNI	06300	Canaseraga Central School District
UNI	08400	Corning City School District
UNI	08790	Dansville Central School District
UNI	10560	Ennis City School District
UNI	13470	Hammondsport Central School District
UNI	14820	Hornell City School District
UNI	20220	Naples Central School District
UNI	22740	Penn Yan Central School District
UNI	23790	Prattsburgh Central School District
UNI	31350	Whiteville Central School District



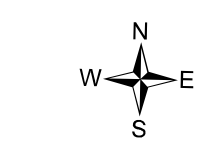
All legal boundaries and names are as of January 1, 2010. The boundaries shown on this map are for Census Bureau statistical data collection and tabulation purposes only; their depiction and designation for statistical purposes does not constitute a determination of jurisdictional authority or rights of ownership or entitlement.

Geographic: Vintage: 2010 Census (reference date: January 1, 2010)
 Data Source: U.S. Census Bureau's MA7/TIGER database (TAB010136)
 Map Created by Geography Division: December 10, 2010

Projection: Albers Equal Area Conic
 Datum: NAD 83
 Spheroid: GRS 80
 1st Standard Parallel: 41 14 01
 2nd Standard Parallel: 44 15 33
 Central Meridian: 75 46 13
 Latitude of Projection's Origin: 40 28 38
 False Easting: 0
 False Northing: 0

The plotted map scale is 1:34050

USCENSUSBUREAU



PARENT SHEET 1
 Total Sheets: 1
 Index Sheets: 0
 Parent Sheets: 1
 Inset Sheets: 0

NAME: Steuben County (101)
 ENTITY TYPE: County or statistically equivalent entity
 ST: New York (36)

2010 SD MAP (PARENT)
 2010/10/10