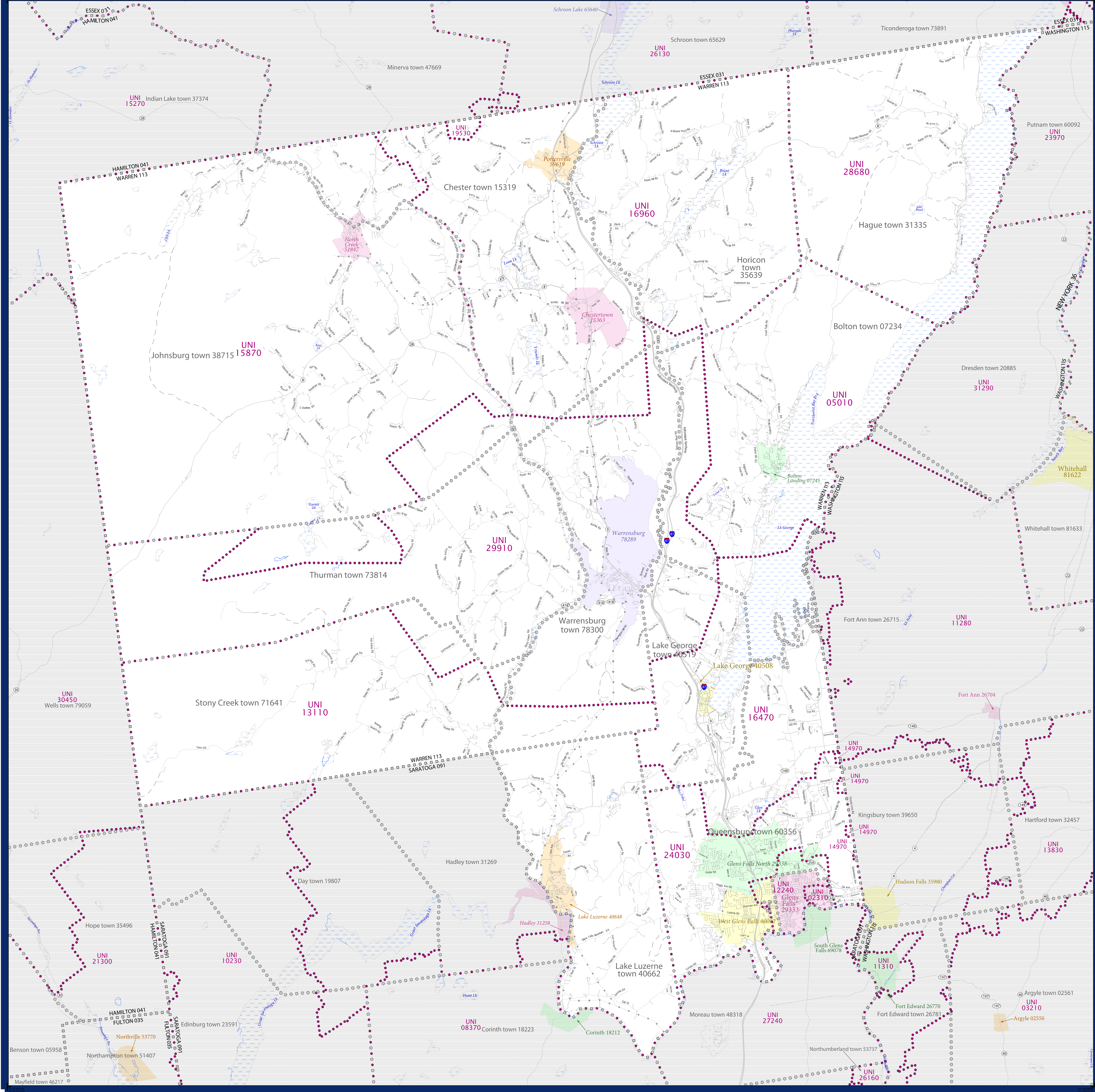


# SCHOOL DISTRICT REFERENCE MAP (2010 CENSUS): Warren County, NY



### LEGEND

SYMBOL DESCRIPTION	SYMBOL	LABEL STYLE
Federal American Indian Reservation	[Dotted pattern]	L'ANSE RES 1880
Off-Reservation Trust Land	[Dotted pattern]	T1880
State American Indian Reservation	[Dotted pattern]	Tama Res 4125
Alaska Native Regional Corporation	[Dotted pattern]	NANA ANRC 52120
State (or statistically equivalent entity)	[Dashed line]	NEW YORK 36
County (or statistically equivalent entity)	[Dashed line]	ERIE 029
Minor Civil Division (MCD) <sup>1,2</sup>	[Dotted line]	Bristol town 07485
Consolidated City	[Dotted line]	MILFORD 47500
Incorporated Place <sup>3</sup>	[Color fill]	Davis 18100
Census Designated Place (CDP) <sup>3</sup>	[Color fill]	Incline Village 35100
Unified School District	[Thick purple line]	UNI 03370
Secondary School District	[Thick orange line]	SEC 99965
Elementary School District	[Thick green line]	ELM 02220

DESCRIPTION	SYMBOL	DESCRIPTION	SYMBOL
Interstate	[Blue line with shield]	Water Body	[Blue wavy line]
U.S. Highway	[Black line with shield]	Swamp or Marsh	[Blue wavy line]
State Highway	[Black line with shield]	Glacier	[Blue wavy line]
Other Road	[Black line]	Military	[Blue wavy line]
4WD Trail, Stamen, Alley, Walkway, or Ferry	[Black line]	National or State Park, Forest, or Reservation Area	[Blue wavy line]
Railroad	[Black line with cross-ticks]	Inset Area	[Grey box]
Pipeline or Power Line	[Black line with cross-ticks]	Outside Subject Area	[Grey box]
Ridge or Fence	[Black line with cross-ticks]		
Property Line	[Black line with cross-ticks]		
Nonvisible Boundary or Feature Not Elsewhere Classified	[Dashed line]		

Where state, county, and/or MCD boundaries coincide, the map shows the boundary symbol for only the highest-ranking of these boundaries.

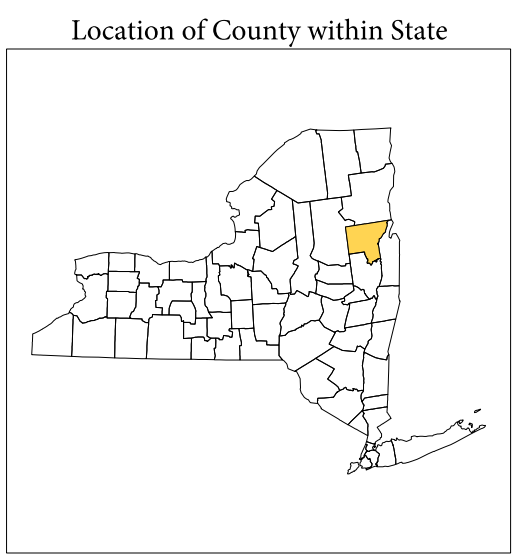
1 A "\*" following an MCD name denotes a false MCD. A "\*" following a place name indicates that a false MCD exists with the same name and FIPS code as the place; the false MCD label is not shown.

2 MCD boundaries are shown in the following states in which MCDs have functioning governments: Connecticut, Maine, Massachusetts, Michigan, Minnesota, New Hampshire, New Jersey, New York, Pennsylvania, Rhode Island, Vermont, and Wisconsin.

3 Place label color correlates to the place fill color.

### SCHOOL DISTRICTS WITHIN COUNTY

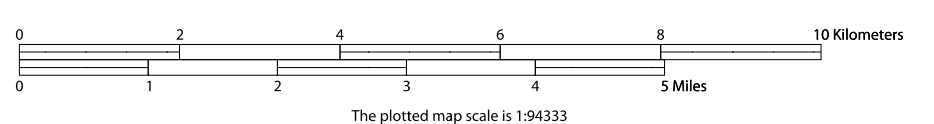
TYPE	CODE	NAME
UNI	0210	Glens Falls Common School District
UNI	05010	Bolton Central School District
UNI	12240	Glens Falls City School District
UNI	13110	Hadley-Luzerne Central School District
UNI	14970	Hudson Falls Central School District
UNI	15870	Johnsburg Central School District
UNI	16470	Lake George Central School District
UNI	16960	North Warren Central School District
UNI	19530	Minerva Central School District
UNI	24030	Queensbury Union Free School District
UNI	26860	Ticonderoga Central School District
UNI	29910	Warrensburg Central School District



All legal boundaries and names are as of January 1, 2010. The boundaries shown on this map are for Census Bureau statistical data collection and tabulation purposes only; their depiction and designation for statistical purposes does not constitute a determination of jurisdictional authority or rights of ownership or entitlement.

Geographic: Vintage: 2010 Census (reference date: January 1, 2010)  
 Data Source: U.S. Census Bureau's MAI/TIGER database (TAB100336)  
 Map Created by Geography Division: December 10, 2010

Projection: Albers Equal Area Conic  
 Datum: NAD83  
 Spheroid: GRS 80  
 1st Standard Parallel: 41 14 01  
 2nd Standard Parallel: 44 15 33  
 Central Meridian: 75 46 13  
 Latitude of Projection's Origin: 40 28 38  
 False Easting: 0  
 False Northing: 0



USCENSUSBUREAU

PARENT SHEET 1  
 Total Sheets: 1  
 Index Sheets: 0  
 Parent Sheets: 0  
 Inset Sheets: 0

NAME: Warren County (113)  
 ENTITY TYPE: County or statistically equivalent entity  
 ST: New York (36)

2010 SD MAP (PARENT)  
 201004131001