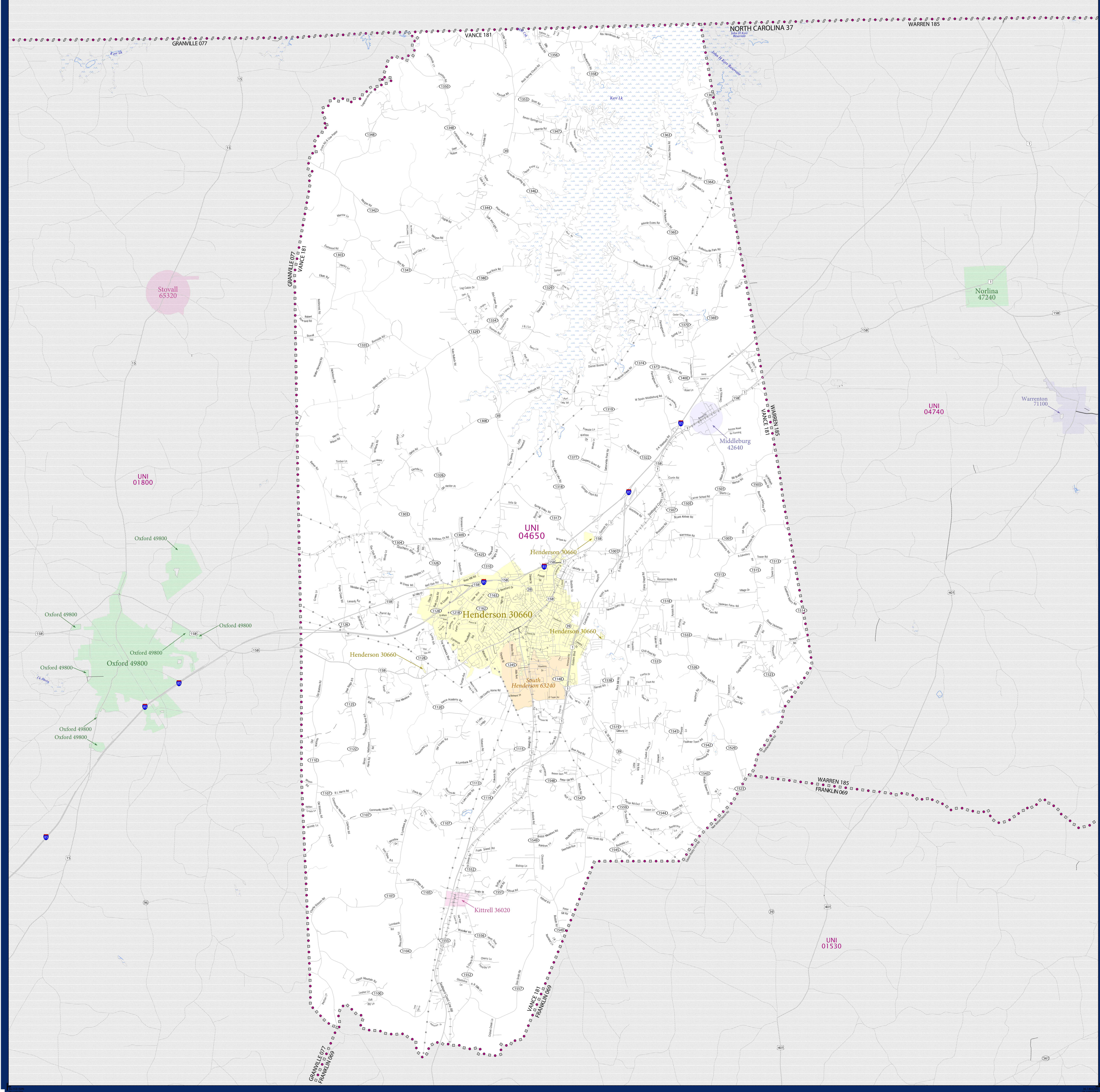


SCHOOL DISTRICT REFERENCE MAP (2010 CENSUS): Vance County, NC



LEGEND	
SYMBOL DESCRIPTION	SYMBOL
Federal American Indian Reservation	[Symbol]
Off-Reservation Trust Land	[Symbol]
State American Indian Reservation	[Symbol]
Alaska Native Regional Corporation	[Symbol]
State (or statistically equivalent entity)	[Symbol]
County (or statistically equivalent entity)	[Symbol]
Minor Civil Division (MCD) ^{1,2}	[Symbol]
Consolidated City	[Symbol]
Incorporated Place ^{1,3}	[Symbol]
Census Designated Place (CDP) ³	[Symbol]
Unified School District	[Symbol]
Secondary School District	[Symbol]
Elementary School District	[Symbol]

SYMBOL	DESCRIPTION	SYMBOL	DESCRIPTION
[Symbol]	Water Body	[Symbol]	Pleasant Lake
[Symbol]	Swamp or Marsh	[Symbol]	Oakfronches Swamp
[Symbol]	Glacier	[Symbol]	Bering Glacier
[Symbol]	Military	[Symbol]	Fort Belvoir
[Symbol]	National or State Park, Forest, or Recreation Area	[Symbol]	Yosemite NP
[Symbol]	Inset Area	[Symbol]	A
[Symbol]	Outside Subject Area	[Symbol]	

Where state, county, and/or MCD boundaries coincide, the map shows the boundary symbol for only the highest-ranking of these boundaries.

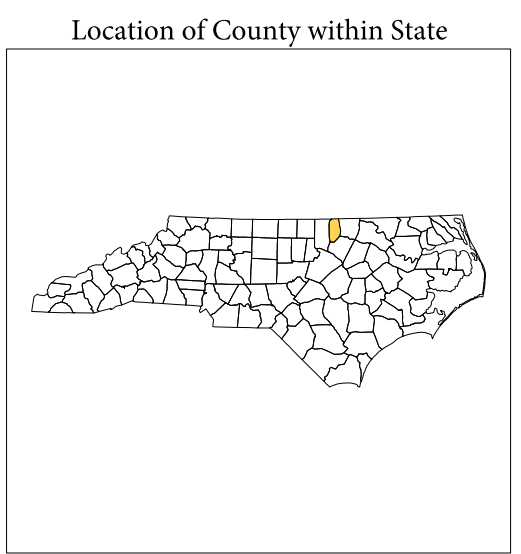
1 A "*" following an MCD name denotes a false MCD. A "*" following a place name indicates that a false MCD exists with the same name and FIPS code as the place; the false MCD label is not shown.

2 MCD boundaries are shown in the following states in which MCDs have functioning governments: Connecticut, Maine, Massachusetts, Michigan, Minnesota, New Hampshire, New Jersey, New York, Pennsylvania, Rhode Island, Vermont, and Wisconsin.

3 Place label color correlates to the place fill color.

SCHOOL DISTRICTS WITHIN COUNTY

TYPE	CODE	NAME	COUNTY
UNI	04650	Henderson	Vance County Schools



All legal boundaries and names are as of January 1, 2010. The boundaries shown on this map are for Census Bureau statistical data collection and tabulation purposes only; their depiction and designation for statistical purposes does not constitute a determination of jurisdictional authority or rights of ownership or entitlement.

Geographic Vintage: 2010 Census (reference date: January 1, 2010)
 Data Source: U.S. Census Bureau's MAINTIGER database (TAB100137)
 Map Created by Geography Division: December 22, 2010

U.S. DEPARTMENT OF COMMERCE Economics and Statistics Administration U.S. Census Bureau

Projection: Albers Equal Area Conic
 Datum: NAD 83
 Spheroid: GRS 80
 1st Standard Parallel: 34 13 30
 2nd Standard Parallel: 36 06 55
 Central Meridian: -79 51 40
 Latitude of Projection's Origin: 33 45 09
 False Easting: 0
 False Northing: 0

The plotted map scale is 1:61194

U.S. DEPARTMENT OF COMMERCE Economics and Statistics Administration U.S. Census Bureau

PARENT SHEET 1
 Total Sheets: 1
 Index Sheets: 0
 Parent Sheets: 1
 Inset Sheets: 0

NAME: Vance County (181)
 ENTITY TYPE: County or statistically equivalent entity
 ST: North Carolina (37)

2010 SD MAP (PARENT)
 2012181001