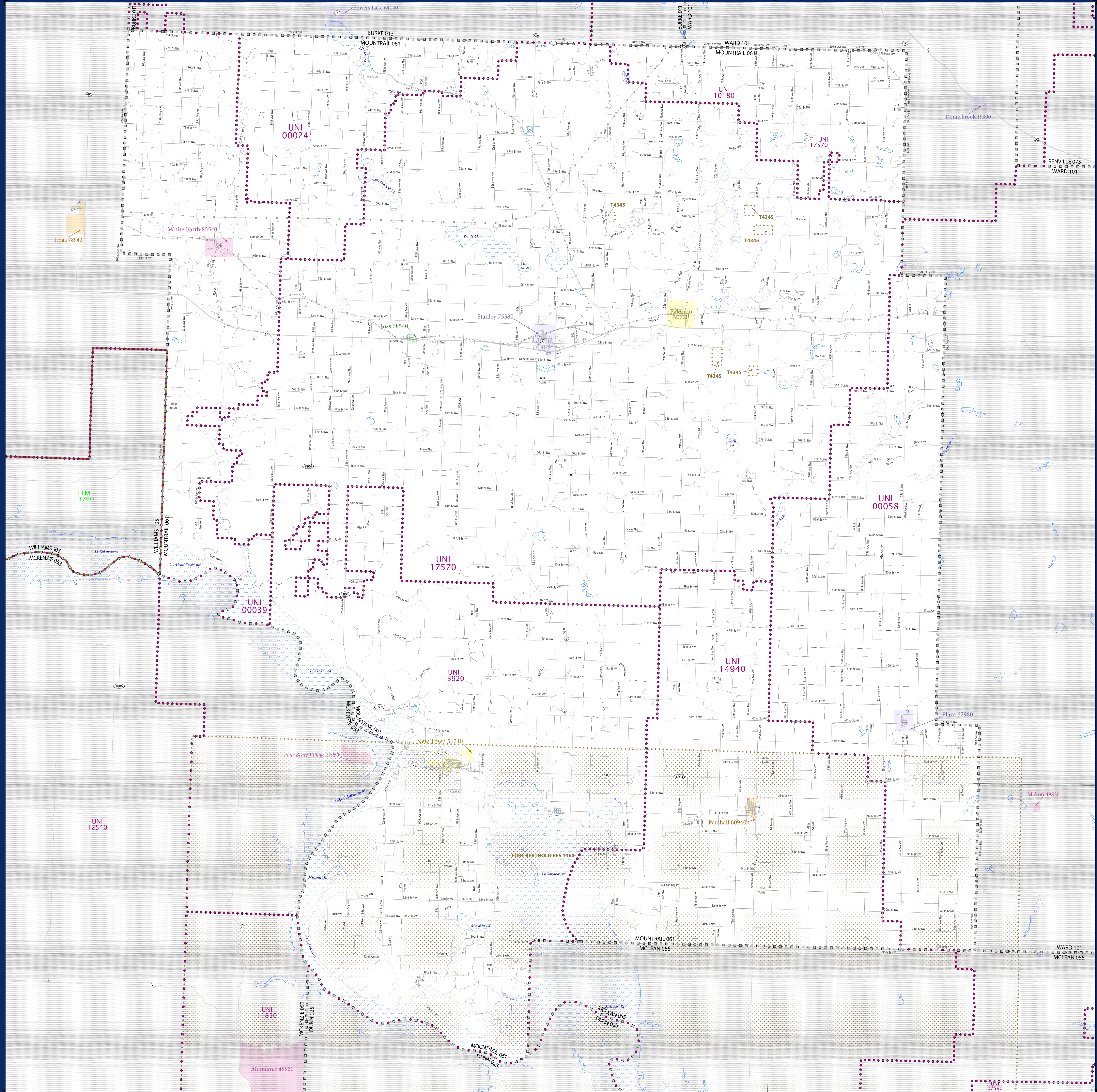


SCHOOL DISTRICT REFERENCE MAP (2010 CENSUS): Mountrail County, ND



| SYMBOL DESCRIPTION | SYMBOL |
|---|----------|
| Federal American Indian Reservation | [Symbol] |
| Off-Reservation Trust Land | [Symbol] |
| State American Indian Reservation | [Symbol] |
| Alaska Native Regional Corporation | [Symbol] |
| State (or statistically equivalent entity) | [Symbol] |
| County (or statistically equivalent entity) | [Symbol] |
| Minor Civil Division (MCD) ^{1,2} | [Symbol] |
| Consolidated City | [Symbol] |
| Incorporated Place ^{1,3} | [Symbol] |
| Census Designated Place (CDP) ¹ | [Symbol] |
| Unified School District | [Symbol] |
| Secondary School District | [Symbol] |
| Elementary School District | [Symbol] |

| LEGEND | LABEL STYLE |
|----------|-----------------------|
| [Symbol] | L'ANSE RES 1880 |
| [Symbol] | T1880 |
| [Symbol] | Tama Res 4125 |
| [Symbol] | NANA ANRC 52120 |
| [Symbol] | NEW YORK 36 |
| [Symbol] | ERIE 029 |
| [Symbol] | Bristol town 07485 |
| [Symbol] | MILFORD 47500 |
| [Symbol] | Davis 18100 |
| [Symbol] | Incline Village 35100 |
| [Symbol] | UNI 03370 |
| [Symbol] | SEC 9565 |
| [Symbol] | ELM 02220 |

| DESCRIPTION | SYMBOL | DESCRIPTION | SYMBOL |
|---|----------|--|----------|
| Interstate | [Symbol] | Water Body | [Symbol] |
| U.S. Highway | [Symbol] | Swamp or Marsh | [Symbol] |
| State Highway | [Symbol] | Glacier | [Symbol] |
| Other Road | [Symbol] | Military | [Symbol] |
| 4WD Trail, Stairway, Alley, Walkway, or Ferry | [Symbol] | National or State Park, Forest, or Recreation Area | [Symbol] |
| Railroad | [Symbol] | Inset Area | [Symbol] |
| Pipeline or Power Line | [Symbol] | Outside Subject Area | [Symbol] |
| Ridge or Fence | [Symbol] | | |
| Property Line | [Symbol] | | |
| Nonvisible Boundary or Feature Not Elsewhere Classified | [Symbol] | | |

Where state, county, and/or MCD boundaries coincide, the map shows the boundary symbol for only the highest-ranking of these boundaries.

1 A " " following an MCD name denotes a false MCD. A " " following a place name indicates that a false MCD exists with the same name and FIPS code as the place; the false MCD label is not shown.

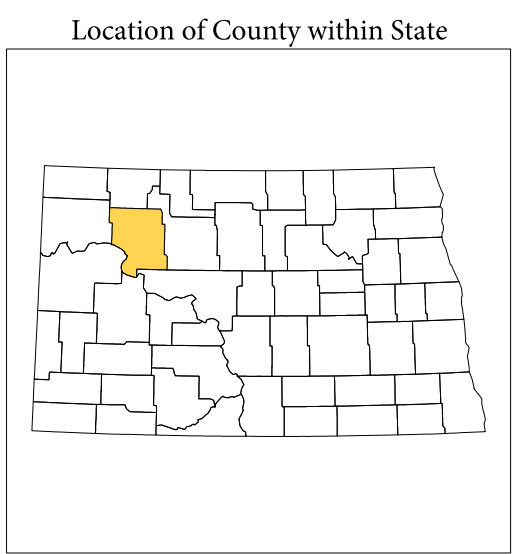
2 MCD boundaries are shown in the following states in which MCDs have functioning governments: Connecticut, Maine, Massachusetts, Michigan, Minnesota, New Hampshire, New Jersey, New York, Pennsylvania, Rhode Island, Vermont, and Wisconsin.

3 Place label color correlates to the place fill color.

OFF-RESERVATION TRUST LAND NAMES
T4345 Turtle Mountain

SCHOOL DISTRICTS WITHIN COUNTY

| TYPE | CODE | NAME |
|------|-------|--|
| UNI | 00024 | Powers Lake Public School District 27 |
| UNI | 00039 | Tioga Public School District 15 |
| UNI | 00058 | Lewis and Clark Public School District 161 |
| UNI | 01080 | Kennmare Public School District 28 |
| UNI | 13920 | New Town Public School District 1 |
| UNI | 14940 | Parshall Public School District 3 |
| UNI | 17570 | Stanley Public School District 2 |

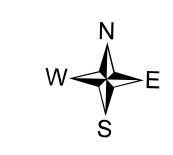
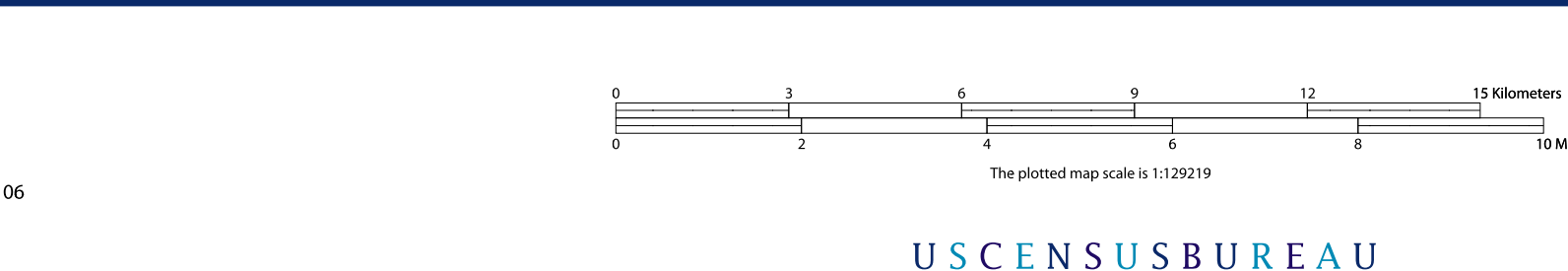


All legal boundaries and names are as of January 1, 2010. The boundaries shown on this map are for Census Bureau statistical data collection and tabulation purposes only; their depiction and designation for statistical purposes does not constitute a determination of jurisdictional authority or rights of ownership or entitlement.

Geographic Vintage: 2010 Census (reference date: January 1, 2010)
Data Source: U.S. Census Bureau's MA/7IGR database (TAB00138)
Map Created by Geography Division: December 10, 2010

U.S. DEPARTMENT OF COMMERCE Economics and Statistics Administration U.S. Census Bureau

Projection: Albers Equal Area Conic
Datum: NAD 83
Spheroid: GRS 80
1st Standard Parallel: 46 26 45
2nd Standard Parallel: 48 29 20
Central Meridian: -100 18 04
Latitude of Projection's Origin: 45 56 06
False Easting: 0
False Northing: 0



PARENT SHEET 1
Total Sheets: 1
Index Sheets: 0
Parent Sheets: 1
Inset Sheets: 0

NAME: Mountrail County (061)
ENTITY TYPE: County or statistically equivalent entity
ST: North Dakota (38)