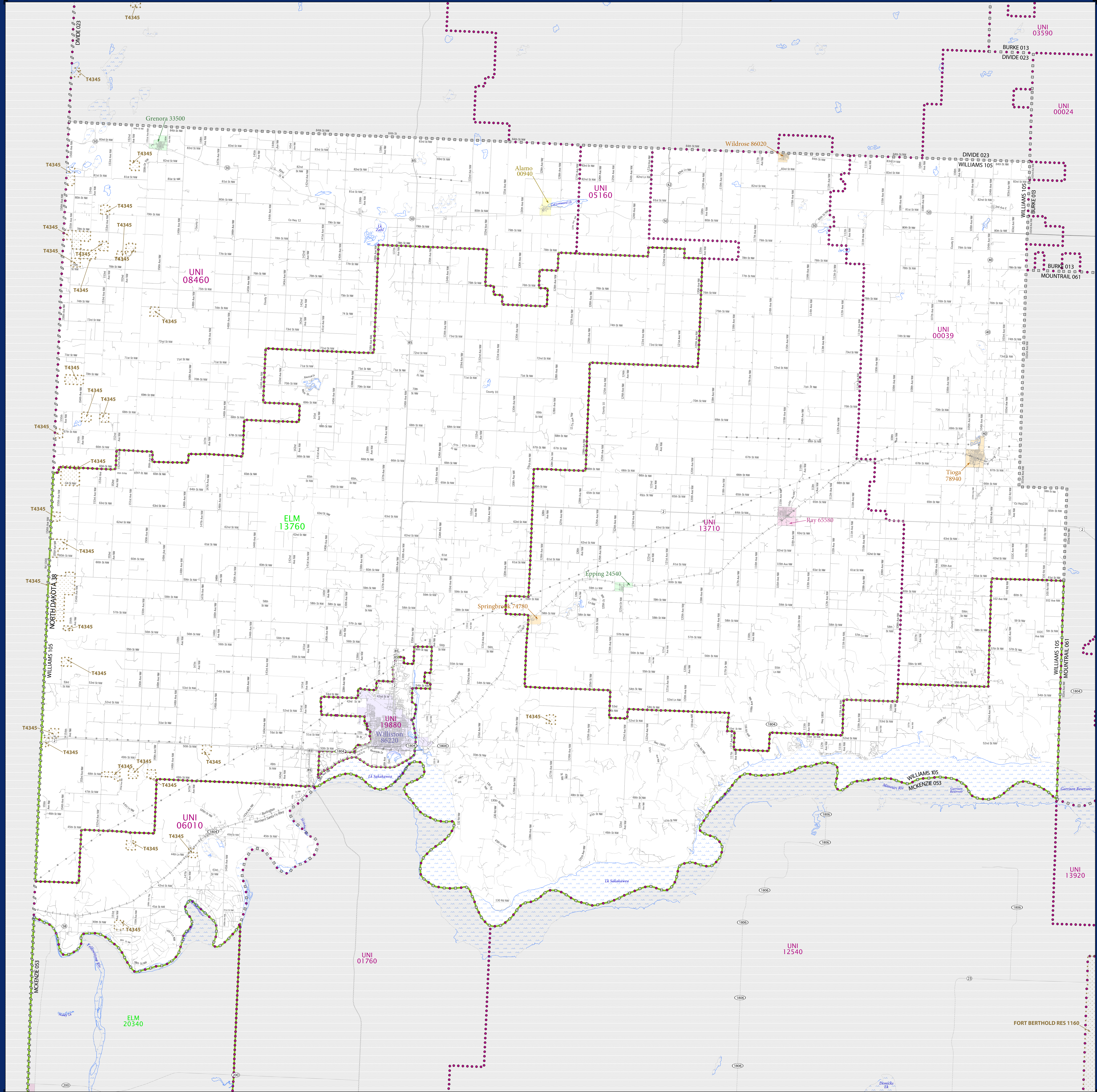


SCHOOL DISTRICT REFERENCE MAP (2010 CENSUS): Williams County, ND



SYMBOL DESCRIPTION		LEGEND	
SYMBOL		SYMBOL	LABEL STYLE
	Federal American Indian Reservation		L'ANSE RES 1880
	Off-Reservation Trust Land		T1880
	State American Indian Reservation		Tama Res 4125
	Alaska Native Regional Corporation		NANA ANRC 52120
	State (or statistically equivalent entity)		NEW YORK 36
	County (or statistically equivalent entity)		ERIE 029
	Minor Civil Division (MCD) 1,2		Bristol town 07485
	Consolidated City		MILFORD 47500
	Incorporated Place 1,3		Davis 18100
	Census Designated Place (CDP)		Incline Village 35100
	Unified School District		UNI 03370
	Secondary School District		SEC 99655
	Elementary School District		ELM 02220

DESCRIPTION	SYMBOL	DESCRIPTION	SYMBOL
Interstate		Water Body	
U.S. Highway		Swamp or Marsh	
State Highway		Glacier	
Other Road		Military	
4WD Trail, Stairway, Alley, Walkway, or Ferry		National or State Park, Forest, or Recreation Area	
Railroad		Inset Area	
Pipeline or Power Line		Outside Subject Area	
Ridge or Fence			
Property Line			
Nonvisible Boundary or Feature Not Elsewhere Classified			

Where state, county, and/or MCD boundaries coincide, the map shows the boundary symbol for only the highest-ranking of these boundaries.

1 A " " following an MCD name denotes a false MCD. A " " following a place name indicates that a false MCD exists with the same name and FIPS code as the place; the false MCD label is not shown.

2 MCD boundaries are shown in the following states in which MCDs have functioning governments: Connecticut, Maine, Massachusetts, Michigan, Minnesota, New Hampshire, New Jersey, New York, Pennsylvania, Rhode Island, Vermont, and Wisconsin.

3 Place label color correlates to the place fill color.

**OFF-RESERVATION TRUST LAND NAMES**

T4345 Turtle Mountain

**SCHOOL DISTRICTS WITHIN COUNTY**

TYPE	CODE	NAME
ELM	13760	New Public School District 8
UNI	00039	Tioga Public School District 15
UNI	05160	Divide County Public School District 1
UNI	06010	Eightmile Public School District 6
UNI	08460	Grenora Public School District 29
UNI	13710	Nesson Public School District 2
UNI	19880	Williston Public School District 1

Location of County within State

All legal boundaries and names are as of January 1, 2010. The boundaries shown on this map are for Census Bureau statistical data collection and tabulation purposes only; their depiction and designation for statistical purposes does not constitute a determination of jurisdictional authority or rights of ownership or entitlement.

Geographic Vintage: 2010 Census (reference date: January 1, 2010)  
Data Source: U.S. Census Bureau's MA/7IGR database (TAB00138)  
Map Created by Geography Division: December 10, 2010

U.S. DEPARTMENT OF COMMERCE Economics and Statistics Administration U.S. Census Bureau

Projection: Albers Equal Area Conic  
Datum: NAD 83  
Spheroid: GRS 80  
1st Standard Parallel: 46 26 45  
2nd Standard Parallel: 48 29 20  
Central Meridian: -100 18 04  
Latitude of Projection's Origin: 45 56 06  
False Easting: 0  
False Northing: 0

The plotted map scale is 1:132966

0 1 2 3 4 5 6 7 8 9 10 Kilometers  
0 1 2 3 4 5 6 7 8 9 10 Miles