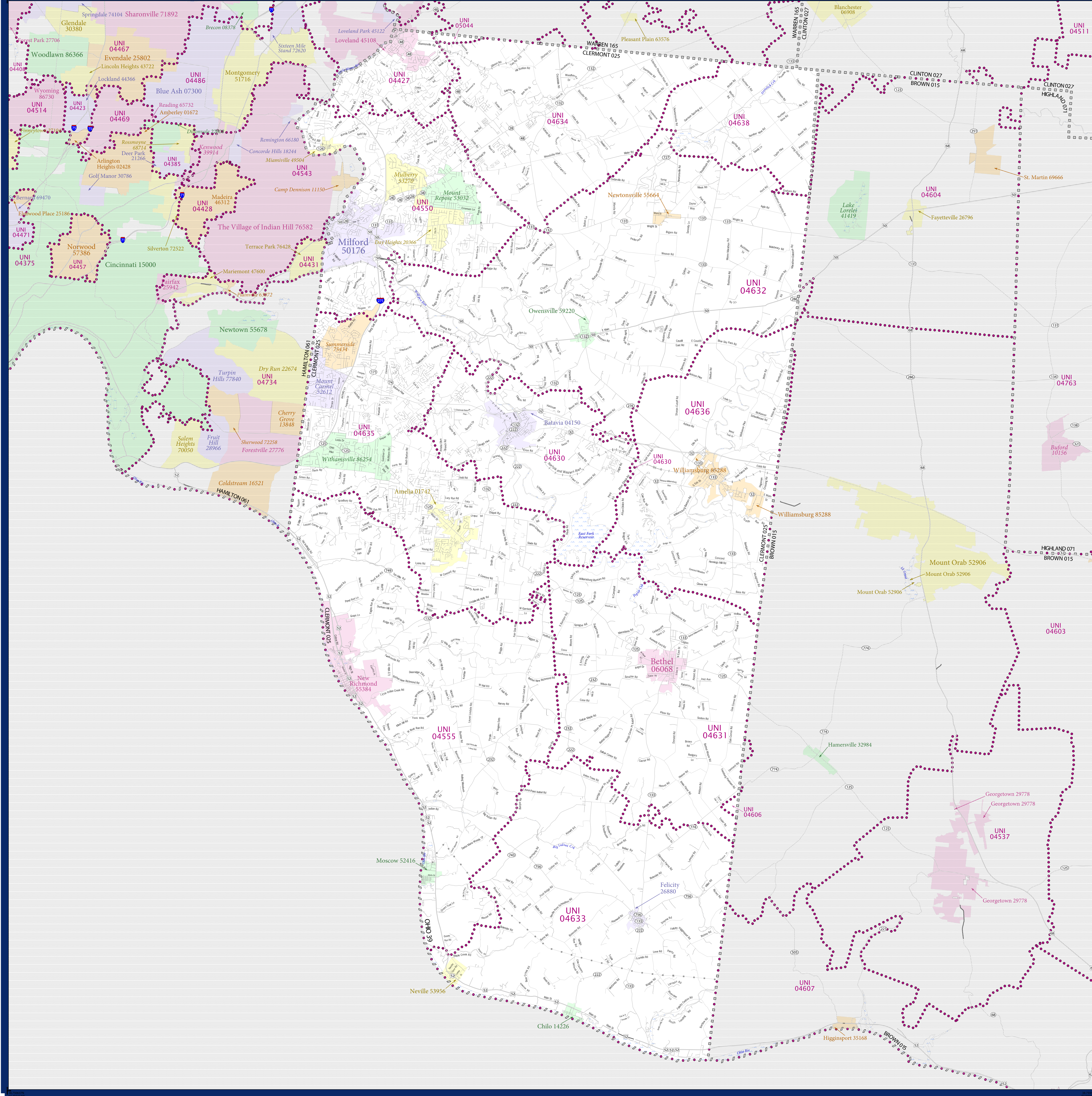


# SCHOOL DISTRICT REFERENCE MAP (2010 CENSUS): Clermont County, OH



### LEGEND

| SYMBOL DESCRIPTION                          | SYMBOL           | SYMBOL                | SYMBOL           |
|---|------------------|-----------------------|------------------|
| Federal American Indian Reservation         | [Dotted pattern] | L'ANSE RES 1880       | [Dotted pattern] |
| Off-Reservation Trust Land                  | [Dotted pattern] | T1880                 | [Dotted pattern] |
| State American Indian Reservation           | [Dotted pattern] | NANA ANRC 52120       | [Dotted pattern] |
| Alaska Native Regional Corporation          | [Dotted pattern] | NEW YORK 36           | [Dotted pattern] |
| State (or statistically equivalent entity)  | [Dotted pattern] | ERIE 029              | [Dotted pattern] |
| County (or statistically equivalent entity) | [Dotted pattern] | Bristol town 07485    | [Dotted pattern] |
| Minor Civil Division (MCD) <sup>1,2</sup>   | [Dotted pattern] | MILFORD 47500         | [Dotted pattern] |
| Consolidated City                           | [Dotted pattern] | Davis 18100           | [Dotted pattern] |
| Incorporated Place <sup>3</sup>             | [Dotted pattern] | Incline Village 35100 | [Dotted pattern] |
| Census Designated Place (CDP) <sup>3</sup>  | [Dotted pattern] | UNI 03370             | [Dotted pattern] |
| Unified School District                     | [Dotted pattern] | SEC 99965             | [Dotted pattern] |
| Secondary School District                   | [Dotted pattern] | ELM 02220             | [Dotted pattern] |
| Elementary School District                  | [Dotted pattern] |                       |                  |

| DESCRIPTION   | SYMBOL             | DESCRIPTION  | SYMBOL           |
|---|--------------------|--|------------------|
| Interstate  | [Thick blue line]  | Water Body   | [Blue wavy line] |
| U.S. Highway  | [Thick black line] | Swamp or Marsh                                     | [Blue wavy line] |
| State Highway   | [Thin black line]  | Glacier  | [Blue wavy line] |
| Other Road  | [Thin black line]  | Military   | [Blue wavy line] |
| RDW Trail, Stamen, Alley, Walkway, or Ferry             | [Thin black line]  | National or State Park, Forest, or Recreation Area | [Blue wavy line] |
| Railroad  | [Thin black line]  | Inset Area   | [Blue wavy line] |
| Pipeline or Power Line                                  | [Thin black line]  | Outside Subject Area                               | [Blue wavy line] |
| Ridge or Fence  | [Thin black line]  |  |                  |
| Property Line   | [Thin black line]  |  |                  |
| Nonvisible Boundary or Feature Not Elsewhere Classified | [Thin black line]  |  |                  |

Where state, county, and/or MCD boundaries coincide, the map shows the boundary symbol for only the highest-ranking of these boundaries.

1 A "\*" following an MCD name denotes a false MCD. A "\*" following a place name indicates that a false MCD exists with the same name and FIPS code as the place; the false MCD label is not shown.

2 MCD boundaries are shown in the following states in which MCDs have functioning governments: Connecticut, Maine, Massachusetts, Michigan, Minnesota, New Hampshire, New Jersey, New York, Pennsylvania, Rhode Island, Vermont, and Wisconsin.

3 Place label color correlates to the place fill color.

### SCHOOL DISTRICTS WITHIN COUNTY

| UNI       | NAME  |
|-----------|---|
| UNI 04457 | Loveland City School District                 |
| UNI 04550 | Milford Exempted Village School District      |
| UNI 04555 | New Richmond Exempted Village School District |
| UNI 04606 | Western Brown Local School District           |
| UNI 04630 | Batavia Local School District                 |
| UNI 04631 | Bethel-Tate Local School District             |
| UNI 04632 | Clermont Northeastern Local School District   |
| UNI 04633 | Felicity-Franklin Local School District       |
| UNI 04634 | Georgetown Local School District              |
| UNI 04635 | West Clermont Local School District           |
| UNI 04636 | Williamsburg Local School District            |
| UNI 04638 | Blanchester Local School District             |
| UNI 05044 | Little Miami Local School District            |

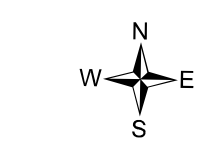
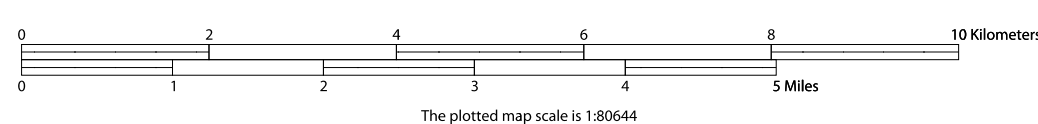


All legal boundaries and names are as of January 1, 2010. The boundaries shown on this map are for Census Bureau statistical data collection and tabulation purposes only; their depiction and designation for statistical purposes does not constitute a determination of jurisdictional authority or rights of ownership or entitlement.

Geographic Vintage: 2010 Census (reference date: January 1, 2010)  
 Data Source: U.S. Census Bureau's MAINTIGR database (TAB00139)  
 Map Created by Geography Division: December 11, 2010

U.S. DEPARTMENT OF COMMERCE Economics and Statistics Administration U.S. Census Bureau

Projection: Albers Equal Area Conic  
 Datum: NAD83  
 Spheroid: GRS 80  
 1st Standard Parallel: 39 03 25  
 2nd Standard Parallel: 41 40 23  
 Central Meridian: -82 40 11  
 Latitude of Projection's Origin: 38 24 11  
 False Easting: 0  
 False Northing: 0



USCENSUSBUREAU

PARENT SHEET 1  
 Total Sheets: 1  
 Index Sheets: 0  
 Parent Sheets: 1  
 Inset Sheets: 0

NAME: Clermont County (025)  
 ENTITY TYPE: County or statistically equivalent entity  
 ST: Ohio (39)

2010 SD MAP (PARENT)  
 20100605001