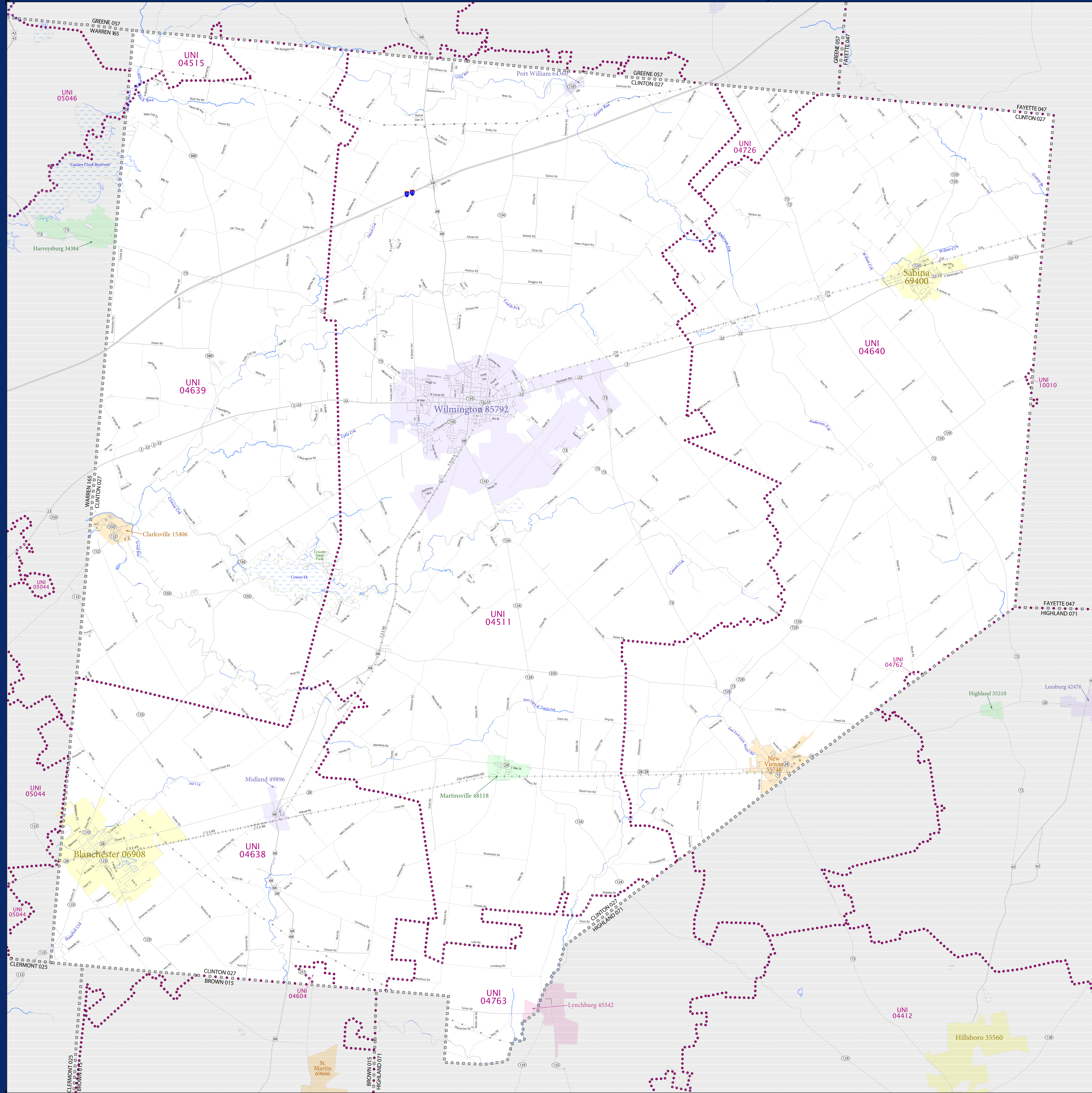


SCHOOL DISTRICT REFERENCE MAP (2010 CENSUS): Clinton County, OH



SYMBOL DESCRIPTION	SYMBOL	LABEL STYLE
Federal American Indian Reservation		L'ANSE RES 1880
Off-Reservation Trust Land		T1880
State American Indian Reservation		Tama Res 4125
Alaska Native Regional Corporation		NANA ANRC 52120
State (or statistically equivalent entity)		NEW YORK 36
County (or statistically equivalent entity)		ERIE 029
Minor Civil Division (MCD) 1,2		Bristol town 07485
Consolidated City		MILFORD 47500
Incorporated Place 1,3		Davis 18100
Census Designated Place (CDP) 1		Incline Village 35100
Unified School District		UNI 03370
Secondary School District		SEC 99965
Elementary School District		ELM 02220

DESCRIPTION	SYMBOL	DESCRIPTION	SYMBOL
Interstate		Water Body	Pleasant Lake
U.S. Highway		Swamp or Marsh	Oklofeneke Swamp
State Highway		Glacier	Bering Glacier
Other Road		Military	Fort Belvoir
4WD Trail, Stumps, Airfield, or Ferry		National or State Park, Forest, or Recreation Area	Yosemite NP
Railroad		Inset Area	
Pipeline or Power Line			
Ridge or Fence			
Property Line		Outside Subject Area	
Unnavigable Boundary or Feature Not Elsewhere Classified			

Where state, county, and/or MCD boundaries coincide, the map shows the boundary symbol for only the highest-ranking of these boundaries.

- 1 A " " following an MCD name denotes a false MCD. A " " following a place name indicates that a false MCD exists with the same name and FIPS code as the place; the false MCD label is not shown.
- 2 MCD boundaries are shown in the following states in which MCDs have functioning governments: Connecticut, Maine, Massachusetts, Michigan, Minnesota, New Hampshire, New Jersey, New York, Pennsylvania, Rhode Island, Vermont, and Wisconsin.
- 3 Place label color correlates to the place fill color.

SCHOOL DISTRICTS WITHIN COUNTY		
TYPE	CODE	NAME
UNI	04511	Wilmington City School District
UNI	04515	Xenia Community City School District
UNI	04604	Fayetteville-Perry Local School District
UNI	04638	Blanchester Local School District
UNI	04639	Clinton-Massie Local School District
UNI	04640	East Clinton Local School District
UNI	04726	Greensview Local School District
UNI	04762	Fairfield Local School District
UNI	04763	Lynchburg-Glady Local School District
UNI	10010	Miami Trace Local School District

Location of County within State

A map of the state of Ohio with its county boundaries delineated. One county, located in the southwestern portion of the state, is highlighted in yellow to indicate its location within the state.

All legal boundaries and names are as of January 1, 2010. The boundaries shown on this map are for Census Bureau statistical data collection and tabulation purposes only; their depiction and designation for statistical purposes does not constitute a determination of jurisdictional authority or rights of ownership or entitlement.

Geographic Vintage: 2010 Census (reference date: January 1, 2010)
Data Source: U.S. Census Bureau's MAF/TIGER database (TAB10ST39)
Map Created by Geography Division: December 11, 2010

U.S. DEPARTMENT OF COMMERCE Economics and Statistics Administration U.S. Census Bureau

Projection: Albers Equal Area Conic
 Datum: NAD 83
 Spheroid: GRS 80
 1st Standard Parallel: 39 05 25
 2nd Standard Parallel: -41 40 23
 Central Meridian: -92 40 11
 Latitude of Projection's Origin: 38 24 11
 False Easting: 0
 False Northing: 0

The scale bar consists of two horizontal lines. The top line is marked from 0 to 5 kilometers, with major ticks every 1 kilometer. The bottom line is marked from 0 to 5 miles, with major ticks every 1 mile. The text 'The plotted map scale is 1:55826' is centered below the scale bar.

The plotted map scale is 1:55826

USCENSUSBUREAU

PARENT SHEET 1

NAME: Clinton County (027)

ENTITY TYPE: County or statistically equivalent entity

ST: Ohio (39)

Total Sheets: 1

- Index Sheets: 0
- Parent Sheets: 1
- Inset Sheets: 0

2010 SD MAP (PARENT)