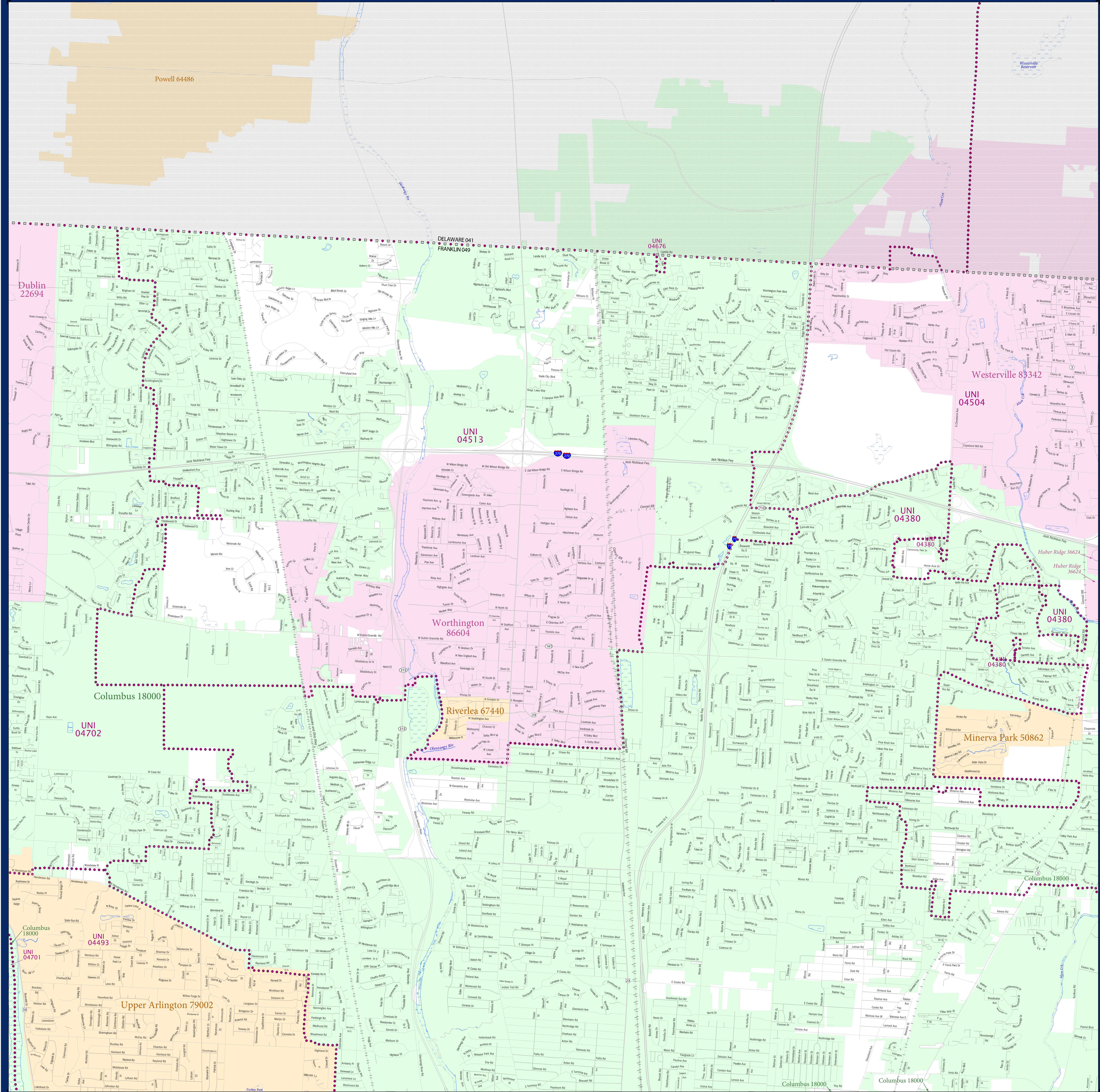


SCHOOL DISTRICT REFERENCE MAP (2010 CENSUS): Franklin County, OH



LEGEND

SYMBOL DESCRIPTION	SYMBOL	LABEL STYLE
Federal American Indian Reservation	[Pattern]	L'ANSE RES 1880
Off-Reservation Trust Land	[Pattern]	T1880
State American Indian Reservation	[Pattern]	Tama Res 4125
Alaska Native Regional Corporation	[Pattern]	NANA ANRC 52120
State (or statistically equivalent entity)	[Pattern]	NEW YORK 36
County (or statistically equivalent entity)	[Pattern]	ERIE 029
Minor Civil Division (MCD) ^{1,2}	[Pattern]	Bristol town 07485
Consolidated City	[Pattern]	MILFORD 47500
Incorporated Place ^{1,3}	[Pattern]	Davis 18100
Census Designated Place (CDP) ³	[Pattern]	Incline Village 35100
Unified School District	[Pattern]	UNI 03370
Secondary School District	[Pattern]	SEC 99965
Elementary School District	[Pattern]	ELM 02220

DESCRIPTION	SYMBOL	DESCRIPTION	SYMBOL
Interstate	[Symbol]	Water Body	[Symbol]
U.S. Highway	[Symbol]	Swamp or Marsh	[Symbol]
State Highway	[Symbol]	Other Road	[Symbol]
Other Road	[Symbol]	4WD Trail, Stewies, Alley, Walkway, or Ferry	[Symbol]
Railroad	[Symbol]	Pipeline or Power Line	[Symbol]
Ridge or Fence	[Symbol]	Property Line	[Symbol]
Nonvisible Boundary or Feature Not Elsewhere Classified	[Symbol]		

Where state, county, and/or MCD boundaries coincide, the map shows the boundary symbol for only the highest-ranking of these boundaries.

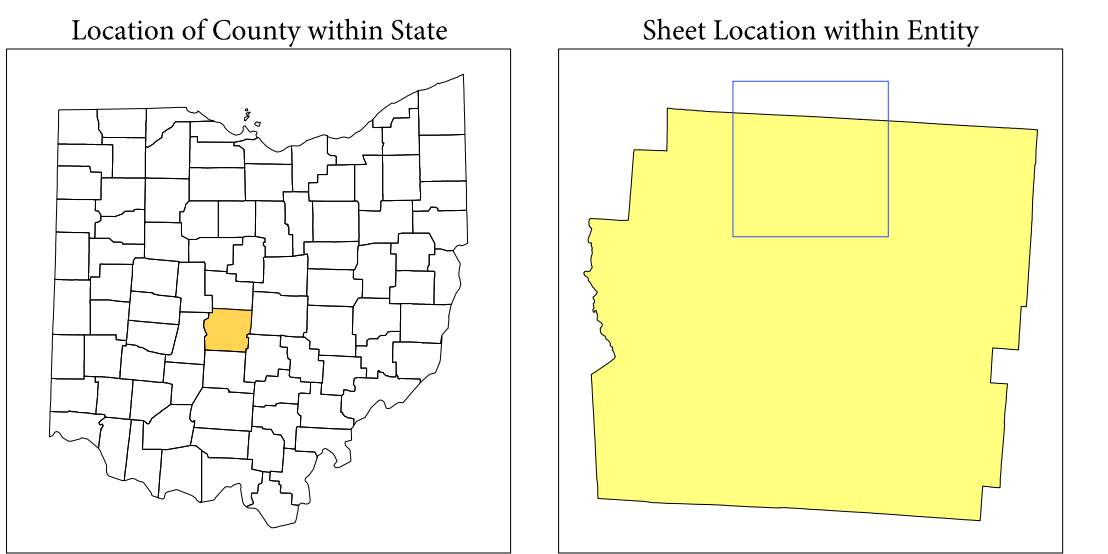
1 A "*" following an MCD name denotes a false MCD. A "*" following a place name indicates that a false MCD exists with the same name and FIPS code as the place; the false MCD label is not shown.

2 MCD boundaries are shown in the following states in which MCDs have functioning governments: Connecticut, Maine, Massachusetts, Michigan, Minnesota, New Hampshire, New Jersey, New York, Pennsylvania, Rhode Island, Vermont, and Wisconsin.

3 Place label color correlates to the place fill color.

SCHOOL DISTRICTS WITHIN COUNTY

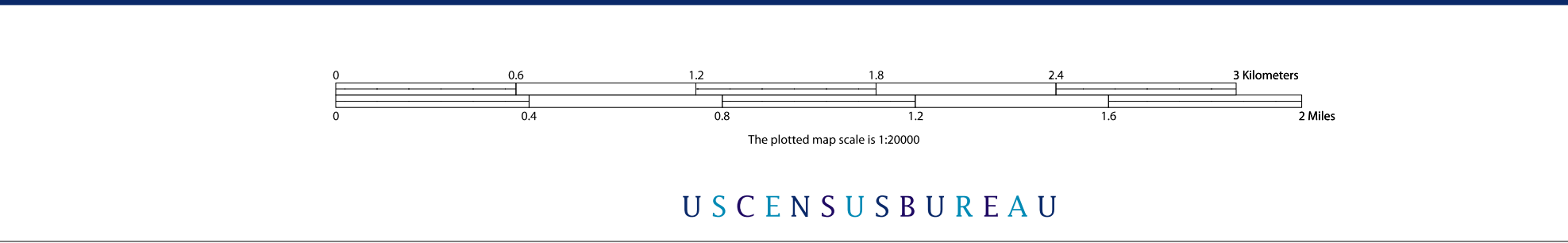
TYPE	CODE	NAME
UNI	04300	Columbus City School District
UNI	04493	Upper Arlington City School District
UNI	04504	Westerville City School District
UNI	04513	Worthington City School District
UNI	04676	Chillicothe Local School District
UNI	04701	Hilliard City School District
UNI	04702	Dublin City School District



All legal boundaries and names are as of January 1, 2010. The boundaries shown on this map are for Census Bureau statistical data collection and tabulation purposes only; their depiction and designation for statistical purposes does not constitute a determination of jurisdictional authority or rights of ownership or entitlement.

Geographic Vintage: 2010 Census (reference date: January 1, 2010)
 Data Source: U.S. Census Bureau's MAINTIGR database (TAB100139)
 Map Created by Geography Division: December 11, 2010

U.S. DEPARTMENT OF COMMERCE Economics and Statistics Administration U.S. Census Bureau



Key to Sheets

1	2	3
4	5	6

PARENT SHEET 2
 Total Sheets: 10
 Index Sheets: 1
 Parent Sheets: 9
 Inset Sheets: 0

NAME: Franklin County (049)
 ENTITY TYPE: County or statistically equivalent entity
 ST: Ohio (39)

2010 SD MAP (PARENT)
 201006002