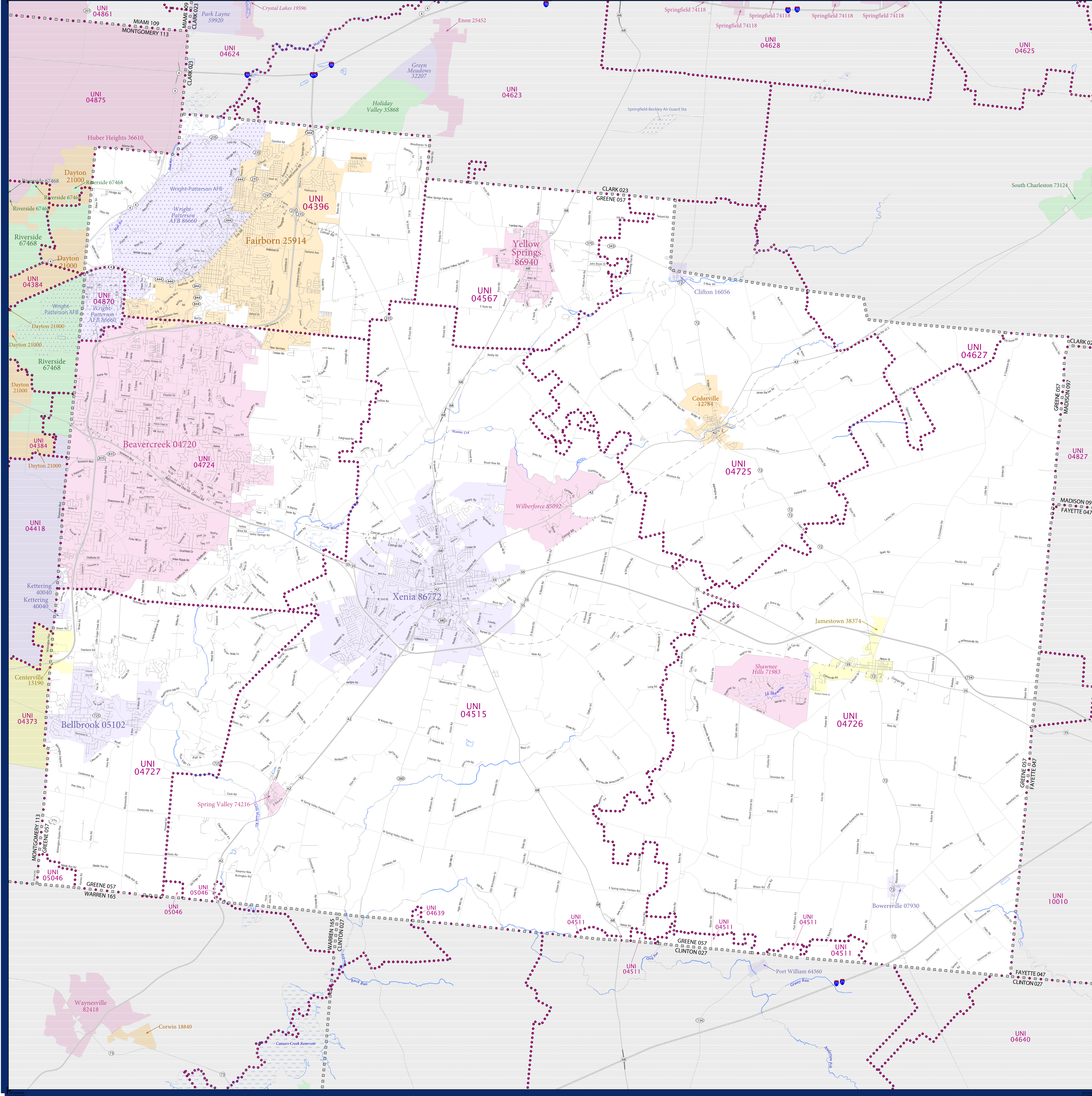


SCHOOL DISTRICT REFERENCE MAP (2010 CENSUS): Greene County, OH



LEGEND

SYMBOL DESCRIPTION	SYMBOL	SYMBOL	SYMBOL
Federal American Indian Reservation	[Dotted pattern]	L'ANSE RES 1880	[Dotted pattern]
Off-Reservation Trust Land	[Dotted pattern]	T1880	[Dotted pattern]
State American Indian Reservation	[Dotted pattern]	Tama Res 4125	[Dotted pattern]
Alaska Native Regional Corporation	[Dotted pattern]	NANA ANRC 52120	[Dotted pattern]
State (or statistically equivalent entity)	[Dotted pattern]	NEW YORK 36	[Dotted pattern]
County (or statistically equivalent entity)	[Dotted pattern]	ERIE 029	[Dotted pattern]
Minor Civil Division (MCD) ^{1,2}	[Dotted pattern]	Bristol town 07485	[Dotted pattern]
Consolidated City	[Dotted pattern]	MILFORD 47500	[Dotted pattern]
Incorporated Place ^{1,3}	[Dotted pattern]	Davis 18100	[Dotted pattern]
Census Designated Place (CDP) ³	[Dotted pattern]	Incline Village 35100	[Dotted pattern]
Unified School District	[Dotted pattern]	UNI 03370	[Dotted pattern]
Secondary School District	[Dotted pattern]	SEC 99965	[Dotted pattern]
Elementary School District	[Dotted pattern]	ELM 02220	[Dotted pattern]

DESCRIPTION	SYMBOL	DESCRIPTION	SYMBOL
Interstate	[Thick blue line]	Water Body	[Blue wavy line]
U.S. Highway	[Thin blue line]	Swamp or Marsh	[Blue wavy line]
State Highway	[Thin blue line]	Glacier	[Blue wavy line]
Other Road	[Thin blue line]	Military	[Blue wavy line]
Railroad	[Black line with cross-ticks]	National or State Park, Forest, or Recreation Area	[Blue wavy line]
Pipeline or Power Line	[Thin black line]	Inset Area	[Blue wavy line]
Ridge or Fence	[Thin black line]	Outside Subject Area	[Blue wavy line]
Property Line	[Thin black line]		
Nonvisible Boundary or Feature Not Elsewhere Classified	[Thin black line]		

Where state, county, and/or MCD boundaries coincide, the map shows the boundary symbol for only the highest-ranking of these boundaries.

1 A "*" following an MCD name denotes a false MCD. A "*" following a place name indicates that a false MCD exists with the same name and FIPS code as the place; the false MCD label is not shown.

2 MCD boundaries are shown in the following states in which MCDs have functioning governments: Connecticut, Maine, Massachusetts, Michigan, Minnesota, New Hampshire, New Jersey, New York, Pennsylvania, Rhode Island, Vermont, and Wisconsin.

3 Place label color correlates to the place fill color.

SCHOOL DISTRICTS WITHIN COUNTY

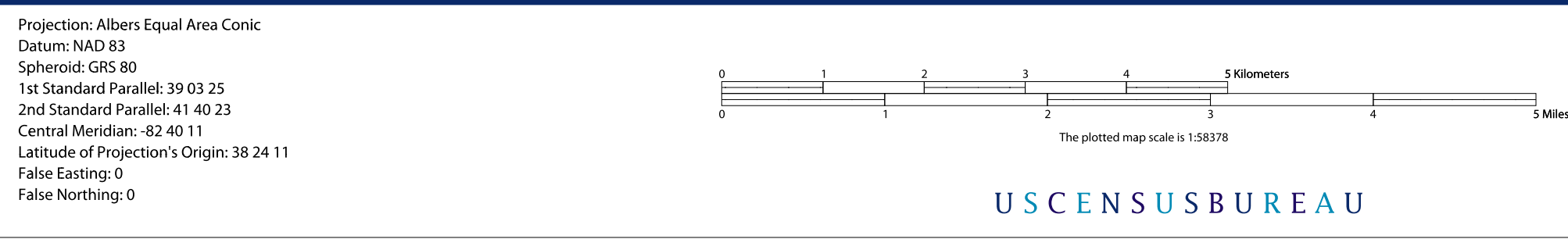
TYPE	CODE	NAME
UNI	04396	Fairborn City School District
UNI	04511	Wilmington City School District
UNI	04515	Xenia Community City School District
UNI	04567	Yellow Springs Exempted Village School District
UNI	04627	Southwestern Local School District
UNI	04639	Clinton-Massie Local School District
UNI	04724	Beavercreek City School District
UNI	04725	Cedar Cliff Local School District
UNI	04726	Greenview Local School District
UNI	04727	Sugar Creek Local School District
UNI	04820	Mad River Local School District
UNI	05046	Wayne Local School District



All legal boundaries and names are as of January 1, 2010. The boundaries shown on this map are for Census Bureau statistical data collection and tabulation purposes only; their depiction and designation for statistical purposes does not constitute a determination of jurisdictional authority or rights of ownership or entitlement.

Geographic: Vintage: 2010 Census (reference date: January 1, 2010)
 Data Source: U.S. Census Bureau's MAI/TIGER database (TAB000139)
 Map Created by Geography Division: December 11, 2010

U.S. DEPARTMENT OF COMMERCE Economics and Statistics Administration U.S. Census Bureau



PARENT SHEET 1
 Total Sheets: 1
 Index Sheets: 0
 Parent Sheets: 1
 Inset Sheets: 0

NAME: Greene County (057)
 ENTITY TYPE: County or statistically equivalent entity
 ST: Ohio (39)

2010 SD MAP (PARENT)
 2010050701