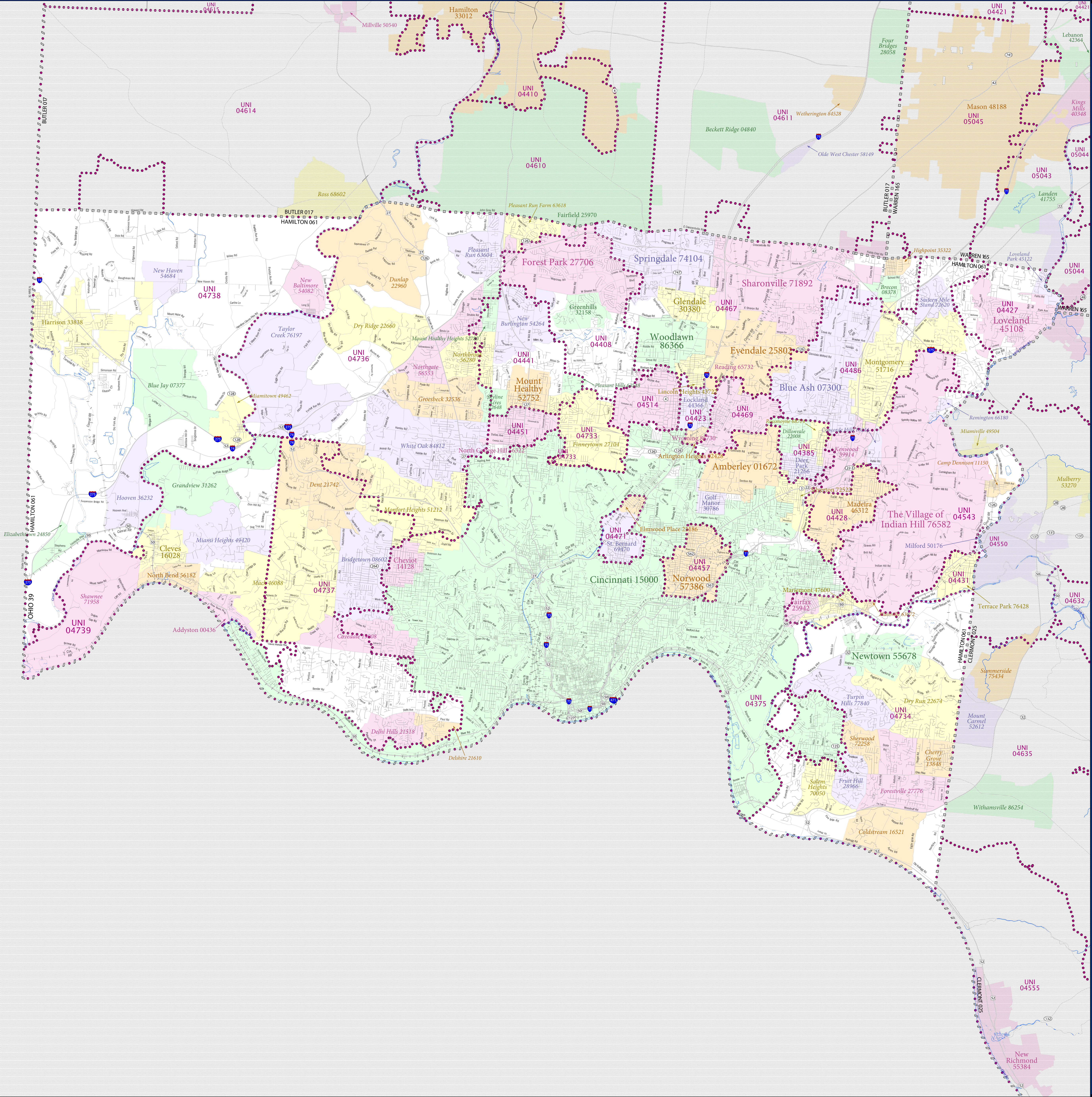


SCHOOL DISTRICT REFERENCE MAP (2010 CENSUS): Hamilton County, OH



LEGEND

SYMBOL DESCRIPTION	SYMBOL	SYMBOL	SYMBOL	DESCRIPTION	SYMBOL
Federal American Indian Reservation	[Dotted pattern]	L'ANSE RES 1880	[Blue line]	Water Body	[Blue wavy line]
Off-Reservation Trust Land	[Dotted pattern]	T1880	[Blue wavy line]	Swamp or Marsh	[Blue wavy line]
State American Indian Reservation	[Dotted pattern]	Tama Res 4125	[Blue wavy line]	Glacier	[Blue wavy line]
Alaska Native Regional Corporation	[Dotted pattern]	NANA ANRC 52120	[Blue wavy line]	Military	[Blue wavy line]
State (or statistically equivalent entity)	[Dotted pattern]	NEW YORK 36	[Blue wavy line]	National or State Park, Forest, or Reservation Area	[Blue wavy line]
County (or statistically equivalent entity)	[Dotted pattern]	ERIE 029	[Blue wavy line]	Inset Area	[Blue wavy line]
Minor Civil Division (MCD) ^{1,2}	[Dotted pattern]	Bristol town 07485	[Blue wavy line]	Outside Subject Area	[Blue wavy line]
Consolidated City	[Dotted pattern]	MILFORD 47500	[Blue wavy line]		
Incorporated Place ³	[Dotted pattern]	Davis 18100	[Blue wavy line]		
Census Designated Place (CDP) ³	[Dotted pattern]	Incline Village 35100	[Blue wavy line]		
Unified School District	[Dotted pattern]	UNI 03370	[Blue wavy line]		
Secondary School District	[Dotted pattern]	SEC 99965	[Blue wavy line]		
Elementary School District	[Dotted pattern]	ELM 02220	[Blue wavy line]		

Where state, county, and/or MCD boundaries coincide, the map shows the boundary symbol for only the highest-ranking of these boundaries.

1 A "*" following an MCD name denotes a false MCD. A "*" following a place name indicates that a false MCD exists with the same name and FIPS code as the place; the false MCD label is not shown.

2 MCD boundaries are shown in the following states in which MCDs have functioning governments: Connecticut, Maine, Massachusetts, Michigan, Minnesota, New Hampshire, New Jersey, New York, Pennsylvania, Rhode Island, Vermont, and Wisconsin.

3 Place label color correlates to the place fill color.

SCHOOL DISTRICTS WITHIN COUNTY

TYPE	CODE	NAME
UNI	0435	Cincinnati City School District
UNI	0438	Deer Park Community City School District
UNI	0440	Winton Woods City School District
UNI	0442	Lockland Local School District
UNI	0443	Loveland City School District
UNI	0444	Mason City School District
UNI	0445	North College Hill City School District
UNI	0446	Mount Healthy City School District
UNI	0447	Norwood City School District
UNI	0448	Prentiss City School District
UNI	0449	Reading Community City School District
UNI	0450	St. Bernard-Elmwood Place City School District
UNI	0451	Wyoming City School District
UNI	0452	Sycamore Community City School District
UNI	0453	Indian Hill Exempted Village School District
UNI	0454	Milford Exempted Village School District
UNI	0455	Finneytown Local School District
UNI	0456	Forest Hills Local School District
UNI	0457	Northwest Local School District
UNI	0458	Oak Hills Local School District
UNI	0459	Southwest Local School District
UNI	0460	Three Rivers Local School District



All legal boundaries and names are as of January 1, 2010. The boundaries shown on this map are for Census Bureau's statistical data collection and tabulation purposes only; their depiction and designation for statistical purposes does not constitute a determination of jurisdictional authority or rights of ownership or entitlement.

Geographic: Vintage: 2010 Census (reference date: January 1, 2010)
 Data Source: U.S. Census Bureau's MAINTIGER database (TAB00139)
 Map Created by Geography Division: December 11, 2010

U.S. DEPARTMENT OF COMMERCE Economics and Statistics Administration U.S. Census Bureau

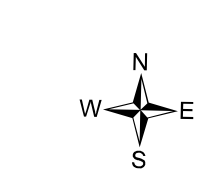
Projection: Albers Equal Area Conic
 Datum: NAD 83
 Spheroid: GRS 80
 1st Standard Parallel: 39 03 25
 2nd Standard Parallel: 41 40 23
 Central Meridian: -82 40 11
 Latitude of Projection's Origin: 38 24 11
 False Easting: 0
 False Northing: 0

The plotted map scale is 1:20914

0 2 4 6 8 10 Kilometers

0 2 4 6 8 10 Miles

U.S. CENSUS BUREAU



PARENT SHEET 1
 Total Sheets: 1
 Index Sheets: 0
 Parent Sheets: 1
 Inset Sheets: 0

NAME: Hamilton County (061)
 ENTITY TYPE: County or statistically equivalent entity
 ST: Ohio (39)