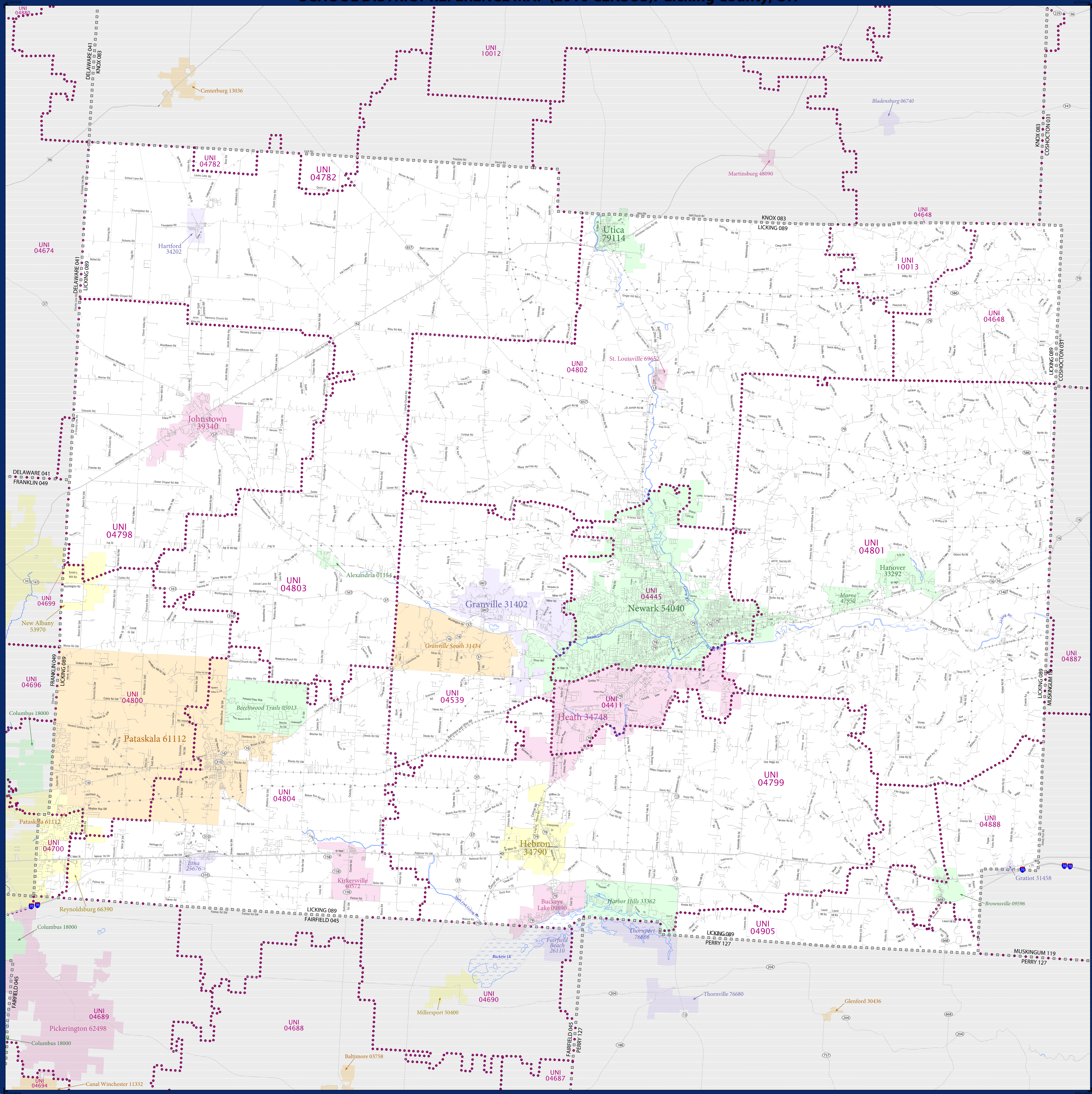


SCHOOL DISTRICT REFERENCE MAP (2010 CENSUS): Licking County, OH



SYMBOL DESCRIPTION	SYMBOL	LABEL STYLE
Federal American Indian Reservation	[Symbol]	L'ANSE RES 1880
Off-Reservation Trust Land	[Symbol]	T1880
State American Indian Reservation	[Symbol]	Tama Res 4125
Alaska Native Regional Corporation	[Symbol]	NANA ANRC 52120
State (or statistically equivalent entity)	[Symbol]	NEW YORK 36
County (or statistically equivalent entity)	[Symbol]	ERIE 029
Minor Civil Division (MCD) ^{1,2}	[Symbol]	Bristol town 07485
Consolidated City	[Symbol]	MILFORD 47500
Incorporated Place ^{1,3}	[Symbol]	Davis 18100
Census Designated Place (CDP) ³	[Symbol]	Incline Village 35100
Unified School District	[Symbol]	UNI 03370
Secondary School District	[Symbol]	99965
Elementary School District	[Symbol]	ELM 02220

DESCRIPTION	SYMBOL	DESCRIPTION	SYMBOL
Interstate	[Symbol]	Water Body	[Symbol]
U.S. Highway	[Symbol]	Swamp or Marsh	[Symbol]
State Highway	[Symbol]	Glacier	[Symbol]
Other Road	[Symbol]	Military	[Symbol]
Railroad	[Symbol]	National or State Park, Forest, or Recreation Area	[Symbol]
Pipeline or Power Line	[Symbol]	Inset Area	[Symbol]
Ridge or Fence	[Symbol]	Outside Subject Area	[Symbol]
Property Line	[Symbol]		
Nonvisible Boundary or Feature Not Elsewhere Classified	[Symbol]		

Where state, county, and/or MCD boundaries coincide, the map shows the boundary symbol for only the highest-ranking of these boundaries.

1 A " " following an MCD name denotes a false MCD. A " " following a place name indicates that a false MCD exists with the same name and FIPS code as the place; the false MCD label is not shown.

2 MCD boundaries are shown in the following states in which MCDs have functioning governments: Connecticut, Maine, Massachusetts, Michigan, Minnesota, New Hampshire, New Jersey, New York, Pennsylvania, Rhode Island, Vermont, and Wisconsin.

3 Place label color correlates to the place fill color.

SCHOOL DISTRICTS WITHIN COUNTY		
UNI	NAME	POPULATION
UNI 04411	Heath City School District	33292
UNI 04445	Newark City School District	54040
UNI 04539	Granville Exempted Village School District	31402
UNI 04648	River View Local School District	33292
UNI 04699	New Albany Plain Local School District	53970
UNI 04700	Reynoldsburg City School District	66390
UNI 04782	Centerburg Local School District	13036
UNI 04798	Johnstown Monroe Local School District	39340
UNI 04799	Lakewood Local School District	34748
UNI 04800	Licking Heights Local School District	33292
UNI 04801	Licking Valley Local School District	47950
UNI 04802	North Fork Local School District	33292
UNI 04803	Northridge Local School District	33292
UNI 04804	Southwest Licking Local School District	33292
UNI 04805	West Muskingum Local School District	33292
UNI 04806	Northern Local School District	33292
UNI 10013	East Knox Local School District	33292



All legal boundaries and names are as of January 1, 2010. The boundaries shown on this map are for Census Bureau statistical data collection and tabulation purposes only; their depiction and designation for statistical purposes does not constitute a determination of jurisdictional authority or rights of ownership or entitlement.

Geographic Vintage: 2010 Census (reference date: January 1, 2010)
Data Source: U.S. Census Bureau's MA7/TIGER database (TAB00139)
Map Created by Geography Division: December 11, 2010

U.S. DEPARTMENT OF COMMERCE Economics and Statistics Administration U.S. Census Bureau

Projection: Albers Equal Area Conic
Datum: NAD 83
Spheroid: GRS 80
1st Standard Parallel: 39 03 25
2nd Standard Parallel: -41 40 23
Central Meridian: -82 40 11
Latitude of Projection's Origin: 38 24 11
False Easting: 0
False Northing: 0

0 2 4 6 8 10 Miles
0 2 4 6 8 10 Kilometers

The plotted map scale is 1:23759

USCENSUSBUREAU

PARENT SHEET 1

Total Sheets: 1
Index Sheets: 0
Parent Sheets: 0
Inset Sheets: 0

NAME: Licking County (089)
ENTITY TYPE: County or statistically equivalent entity
ST: Ohio (39)

2010 SD MAP (PARENT)
20100906001