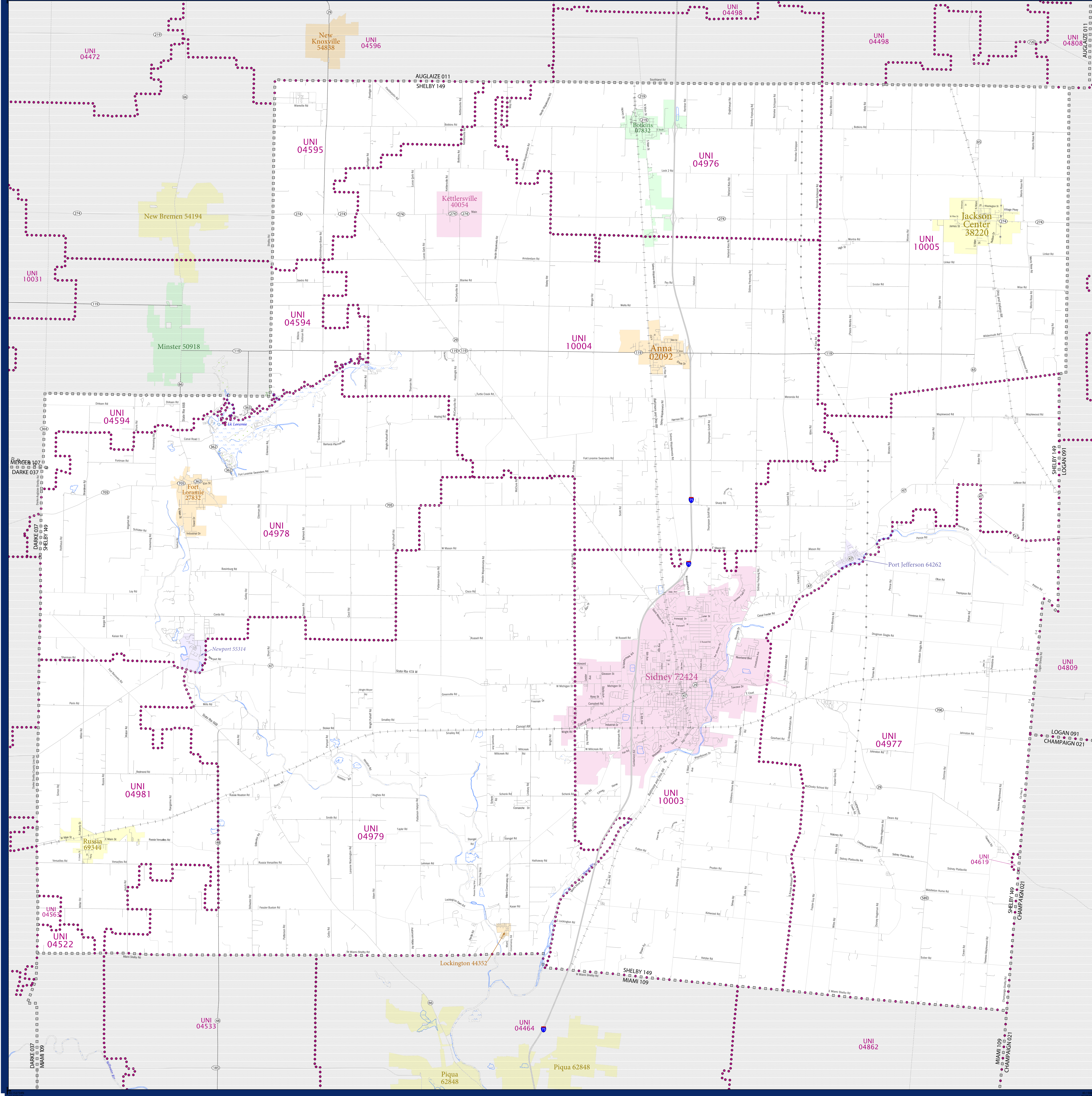


# SCHOOL DISTRICT REFERENCE MAP (2010 CENSUS): Shelby County, OH



### LEGEND

SYMBOL DESCRIPTION	SYMBOL	LABEL STYLE
Federal American Indian Reservation	[Dotted pattern]	L'ANSE RES 1880
Off-Reservation Trust Land	[Dotted pattern]	T1880
State American Indian Reservation	[Dotted pattern]	Tama Res 4125
Alaska Native Regional Corporation	[Dotted pattern]	NANA ANRC 52120
State (or statistically equivalent entity)	[Dotted pattern]	NEW YORK 36
County (or statistically equivalent entity)	[Dotted pattern]	ERIE 029
Minor Civil Division (MCD) <sup>1,2</sup>	[Dotted pattern]	Bristol town 07485
Consolidated City	[Dotted pattern]	MILFORD 47500
Incorporated Place <sup>1,3</sup>	[Dotted pattern]	Davis 18100
Census Designated Place (CDP) <sup>3</sup>	[Dotted pattern]	Incline Village 35100
Unified School District	[Dotted pattern]	UNI 03370
Secondary School District	[Dotted pattern]	SEC 99965
Elementary School District	[Dotted pattern]	ELM 02220

Where state, county, and/or MCD boundaries coincide, the map shows the boundary symbol for only the highest-ranking of these boundaries.

1 A "\*" following an MCD name denotes a false MCD. A "\*" following a place name indicates that a false MCD exists with the same name and FIPS code as the place; the false MCD label is not shown.

2 MCD boundaries are shown in the following states in which MCDs have functioning governments: Connecticut, Maine, Massachusetts, Michigan, Minnesota, New Hampshire, New Jersey, New York, Pennsylvania, Rhode Island, Vermont, and Wisconsin.

3 Place label color correlates to the place fill color.

### SCHOOL DISTRICTS WITHIN COUNTY

UNI	NAME
UNI 04522	Bradford Exempted Village School District
UNI 04563	Versailles Exempted Village School District
UNI 04564	Minster Local School District
UNI 04595	New Bremen Local School District
UNI 04619	Grainfield Local School District
UNI 04976	Botkins Local School District
UNI 04977	Fairview Local School District
UNI 04978	Fort Loramie Local School District
UNI 04979	Hardin-Houston Local School District
UNI 04981	Russia Local School District
UNI 10003	Sidney City School District
UNI 10004	Anna Local School District
UNI 10005	Jackson Center Local School District

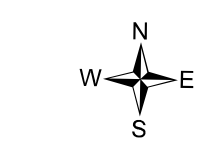
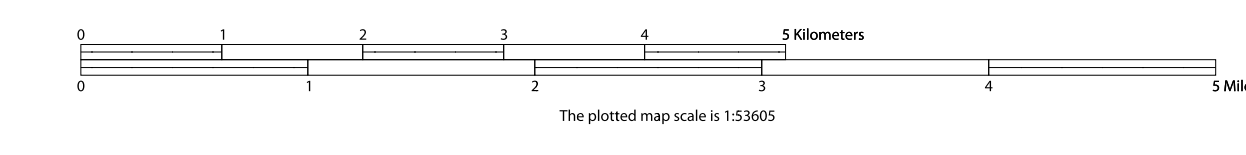


All legal boundaries and names are as of January 1, 2010. The boundaries shown on this map are for Census Bureau statistical data collection and tabulation purposes only; their depiction and designation for statistical purposes does not constitute a determination of jurisdictional authority or rights of ownership or entitlement.

Geographic Vintage: 2010 Census (reference date: January 1, 2010)  
 Data Source: U.S. Census Bureau's MAI/TIGER database (TAB100139)  
 Map Created by Geography Division: December 11, 2010

U.S. DEPARTMENT OF COMMERCE Economics and Statistics Administration U.S. Census Bureau

Projection: Albers Equal Area Conic  
 Datum: NAD83  
 Spheroid: GRS 80  
 1st Standard Parallel: 39 03 25  
 2nd Standard Parallel: 41 40 23  
 Central Meridian: -82 40 11  
 Latitude of Projection's Origin: 38 24 11  
 False Easting: 0  
 False Northing: 0



USCENSUSBUREAU

PARENT SHEET 1  
 Total Sheets: 1  
 Index Sheets: 0  
 Parent Sheets: 0  
 Inset Sheets: 0

NAME: Shelby County (149)  
 ENTITY TYPE: County or statistically equivalent entity  
 ST: Ohio (39)