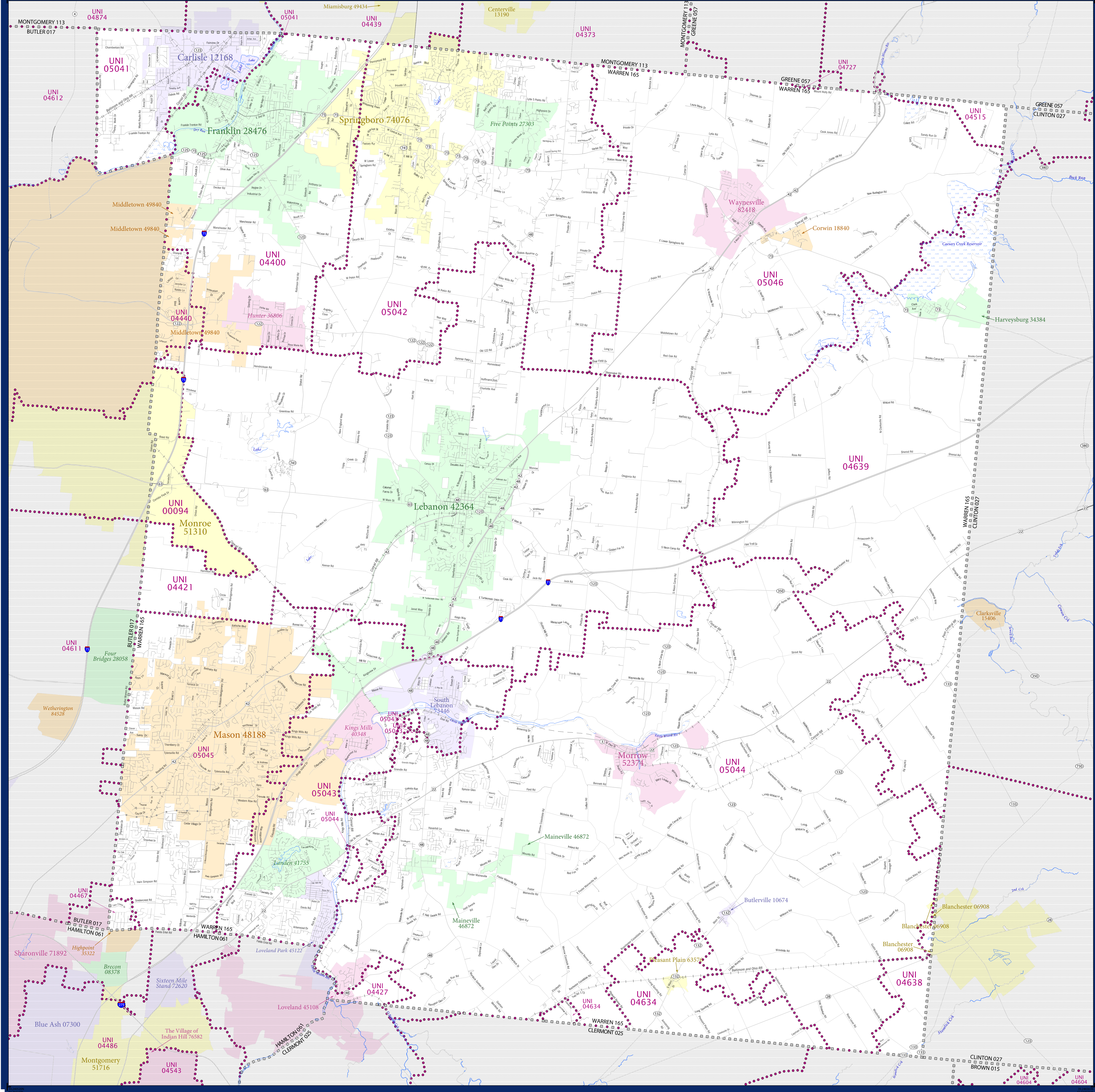


SCHOOL DISTRICT REFERENCE MAP (2010 CENSUS): Warren County, OH



LEGEND

SYMBOL DESCRIPTION	SYMBOL	SYMBOL	SYMBOL
Federal American Indian Reservation	[Dotted pattern]	L'ANSE RES 1880	[Dotted pattern]
Off-Reservation Trust Land	[Dotted pattern]	T1880	[Dotted pattern]
State American Indian Reservation	[Dotted pattern]	Tama Res 4125	[Dotted pattern]
Alaska Native Regional Corporation	[Dotted pattern]	NANA ANRC 52120	[Dotted pattern]
State (or statistically equivalent entity)	[Dotted pattern]	NEW YORK 36	[Dotted pattern]
County (or statistically equivalent entity)	[Dotted pattern]	ERIE 029	[Dotted pattern]
Minor Civil Division (MCD) ^{1,2}	[Dotted pattern]	Bristol town 07485	[Dotted pattern]
Consolidated City	[Dotted pattern]	MILFORD 47500	[Dotted pattern]
Incorporated Place ³	[Dotted pattern]	Davis 18100	[Dotted pattern]
Census Designated Place (CDP) ³	[Dotted pattern]	Inline Village 35100	[Dotted pattern]
Unified School District	[Dotted pattern]	UNI 03370	[Dotted pattern]
Secondary School District	[Dotted pattern]	SEC 99965	[Dotted pattern]
Elementary School District	[Dotted pattern]	ELM 02220	[Dotted pattern]

DESCRIPTION	SYMBOL	DESCRIPTION	SYMBOL
Interstate	[Thick blue line]	Water Body	[Blue wavy line]
U.S. Highway	[Thick black line]	Swamp or Marsh	[Blue wavy line]
State Highway	[Thin black line]	Glacier	[Blue wavy line]
Other Road	[Thin black line]	Military	[Blue wavy line]
4WD Trail, Stewari, Alley, Walkway, or Ferry	[Thin black line]	National or State Park, Forest, or Recreation Area	[Blue wavy line]
Railroad	[Thin black line]	Inset Area	[Blue wavy line]
Pipeline or Power Line	[Thin black line]	Outside Subject Area	[Blue wavy line]
Ridge or Fence	[Thin black line]		
Property Line	[Thin black line]		
Nonvisible Boundary or Feature Not Elsewhere Classified	[Thin black line]		

Where state, county, and/or MCD boundaries coincide, the map shows the boundary symbol for only the highest-ranking of these boundaries.

1 A "*" following an MCD name denotes a false MCD. A "*" following a place name indicates that a false MCD exists with the same name and FIPS code as the place; the false MCD label is not shown.

2 MCD boundaries are shown in the following states in which MCDs have functioning governments: Connecticut, Maine, Massachusetts, Michigan, Minnesota, New Hampshire, New Jersey, New York, Pennsylvania, Rhode Island, Vermont, and Wisconsin.

3 Place label color correlates to the place fill color.

SCHOOL DISTRICTS WITHIN COUNTY

TYPE	CODE	NAME
UNI	0004	Moraine Local School District
UNI	04400	Franklin City School District
UNI	04421	Lebanon City School District
UNI	04427	Lowland City School District
UNI	04440	Middletown City School District
UNI	04467	Princeton City School District
UNI	04515	Area Community City School District
UNI	04634	Goshen Local School District
UNI	04638	Blanchester Local School District
UNI	04639	Clinton Massie Local School District
UNI	04727	Sugarcreek Local School District
UNI	05041	Carlisle Local School District
UNI	05042	Springboro Community City School District
UNI	05043	Kings Local School District
UNI	05044	Little Miami Local School District
UNI	05045	Mason City School District
UNI	05046	Wayne Local School District



All legal boundaries and names are as of January 1, 2010. The boundaries shown on this map are for Census Bureau statistical data collection and tabulation purposes only; their depiction and designation for statistical purposes does not constitute a determination of jurisdictional authority or rights of ownership or entitlement.

Geographic: Vintage: 2010 Census (reference date: January 1, 2010)
 Data Source: U.S. Census Bureau's MAINTIGR database (TAB100139)
 Map Created by Geography Division: December 11, 2010

Projection: Albers Equal Area Conic
 Datum: NAD 83
 Spheroid: GRS 80
 1st Standard Parallel: 39 03 25
 2nd Standard Parallel: 41 40 23
 Central Meridian: -82 40 11
 Latitude of Projection's Origin: 38 24 11
 False Easting: 0
 False Northing: 0

The plotted map scale is 1:54000

PARENT SHEET 1
 Total Sheets: 1
 Index Sheets: 0
 Parent Sheets: 1
 Inset Sheets: 0

NAME: Warren County (165)
 ENTITY TYPE: County or statistically equivalent entity
 ST: Ohio (39)

2010 SD MAP (PARENT)
 2010165001