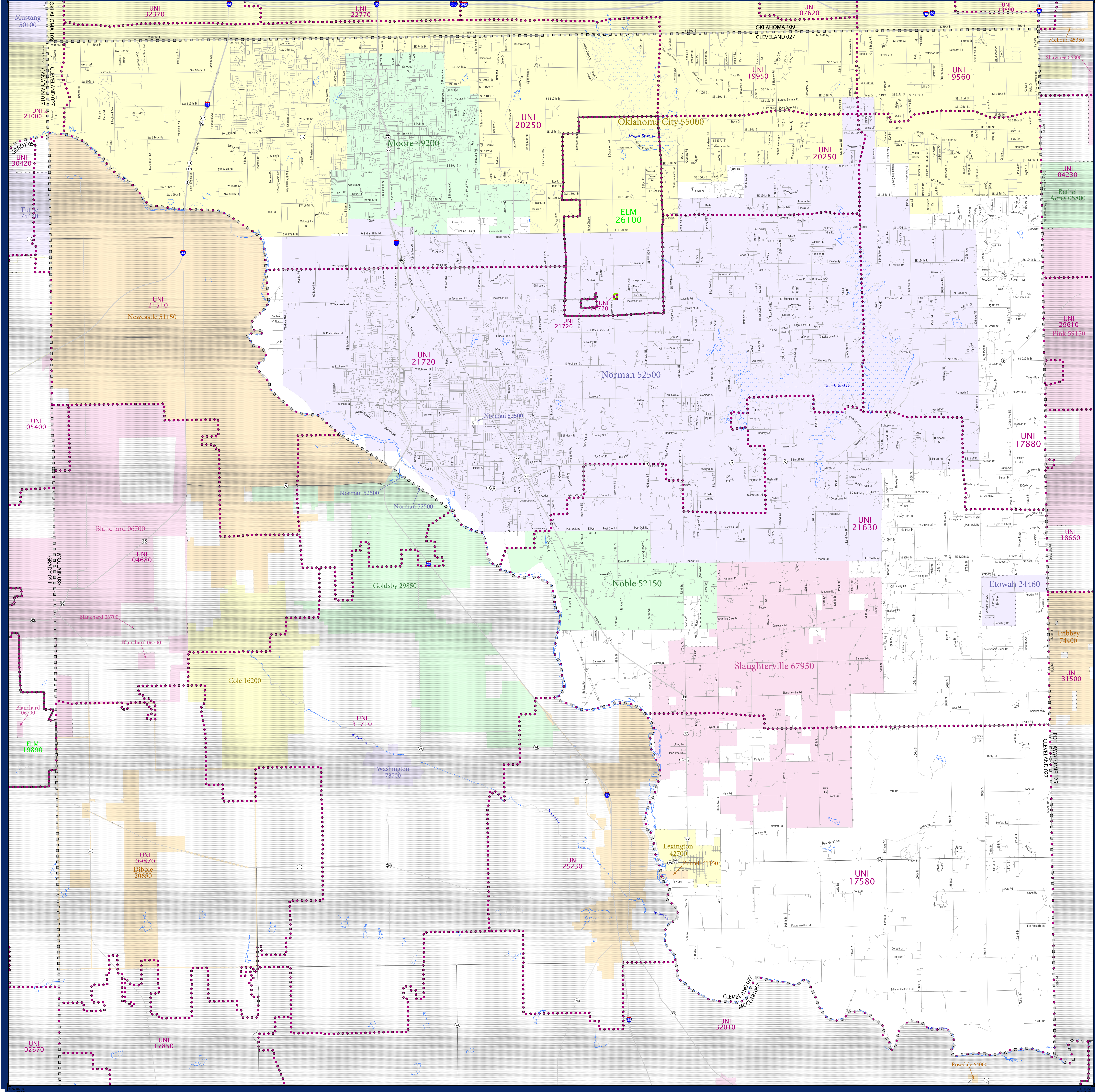


# SCHOOL DISTRICT REFERENCE MAP (2010 CENSUS): Cleveland County, OK



SYMBOL DESCRIPTION		LEGEND	
[Symbol]	Federal American Indian Reservation	[Symbol]	L'ANSE RES 1880
[Symbol]	Off-Reservation Trust Land	[Symbol]	T1880
[Symbol]	State American Indian Reservation	[Symbol]	Tama Res 4125
[Symbol]	Alaska Native Regional Corporation	[Symbol]	NANA ANRC 52120
[Symbol]	State (or statistically equivalent entity)	[Symbol]	NEW YORK 36
[Symbol]	County (or statistically equivalent entity)	[Symbol]	ERIE 029
[Symbol]	Minor Civil Division (MCD) <sup>1,2</sup>	[Symbol]	Bristol town 07485
[Symbol]	Consolidated City	[Symbol]	MILFORD 47500
[Symbol]	Incorporated Place <sup>3</sup>	[Symbol]	Davis 18100
[Symbol]	Census Designated Place (CDP) <sup>3</sup>	[Symbol]	Incline Village 35100
[Symbol]	Unified School District	[Symbol]	UNI 03370
[Symbol]	Secondary School District	[Symbol]	SEC 99955
[Symbol]	Elementary School District	[Symbol]	ELM 02220

DESCRIPTION	SYMBOL	DESCRIPTION	SYMBOL
Interstate	[Symbol]	Water Body	[Symbol]
U.S. Highway	[Symbol]	Swamp or Marsh	[Symbol]
State Highway	[Symbol]	Glacier	[Symbol]
Other Road	[Symbol]	Military	[Symbol]
Railroad	[Symbol]	National or State Park, Forest, or Reservation Area	[Symbol]
Pipeline or Power Line	[Symbol]	Inset Area	[Symbol]
Ridge or Fence	[Symbol]	Outside Subject Area	[Symbol]
Property Line	[Symbol]		
Nonvisible Boundary or Feature Not Elsewhere Classified	[Symbol]		

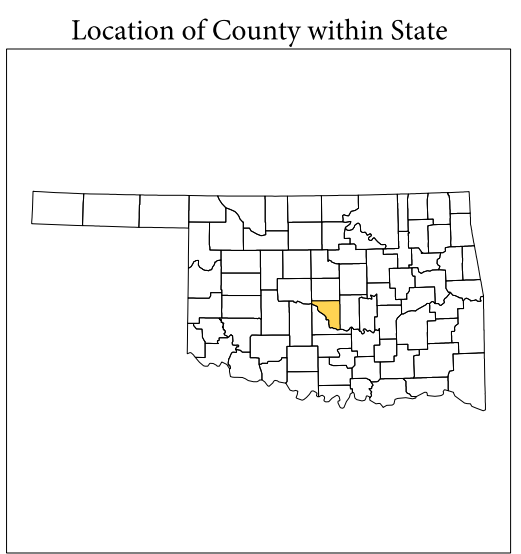
Where state, county, and/or MCD boundaries coincide, the map shows the boundary symbol for only the highest-ranking of these boundaries.

1 A "\*" following an MCD name denotes a false MCD. A "\*" following a place name indicates that a false MCD exists with the same name and FIPS code as the place; the false MCD label is not shown.

2 MCD boundaries are shown in the following states in which MCDs have functioning governments: Connecticut, Maine, Massachusetts, Michigan, Minnesota, New Hampshire, New Jersey, New York, Pennsylvania, Rhode Island, Vermont, and Wisconsin.

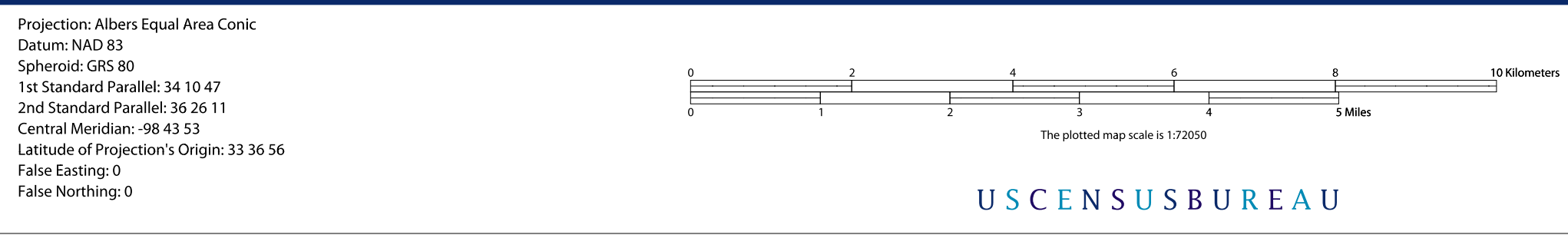
3 Place label color correlates to the place fill color.

SCHOOL DISTRICTS WITHIN COUNTY	TYPE	CODE	NAME
ELM	20100	Elmore Public Schools	
UNI	17580	Lexington Public Schools	
UNI	17880	Little Axe Public Schools	
UNI	19950	McCloud Public Schools	
UNI	19950	Midwest City City Schools	
UNI	20250	Moore Public Schools	
UNI	21000	Mustang Public Schools	
UNI	21630	Noble Public Schools	
UNI	21720	Norman Public Schools	



All legal boundaries and names are as of January 1, 2010. The boundaries shown on this map are for Census Bureau statistical data collection and tabulation purposes only; their depiction and designation for statistical purposes does not constitute a determination of jurisdictional authority or rights of ownership or entitlement.

Geographic: Vintage: 2010 Census (reference date: January 1, 2010)  
 Data Source: U.S. Census Bureau's MAINTIGR database (TAB00140)  
 Map Created by Geography Division: November 30, 2010



PARENT SHEET 1  
 Total Sheets: 1  
 Index Sheets: 0  
 Parent Sheets: 1  
 Inset Sheets: 0

NAME: Cleveland County (027)  
 ENTITY TYPE: County or statistically equivalent entity  
 ST: Oklahoma (40)

2010 SD MAP (PARENT)  
 201040027001