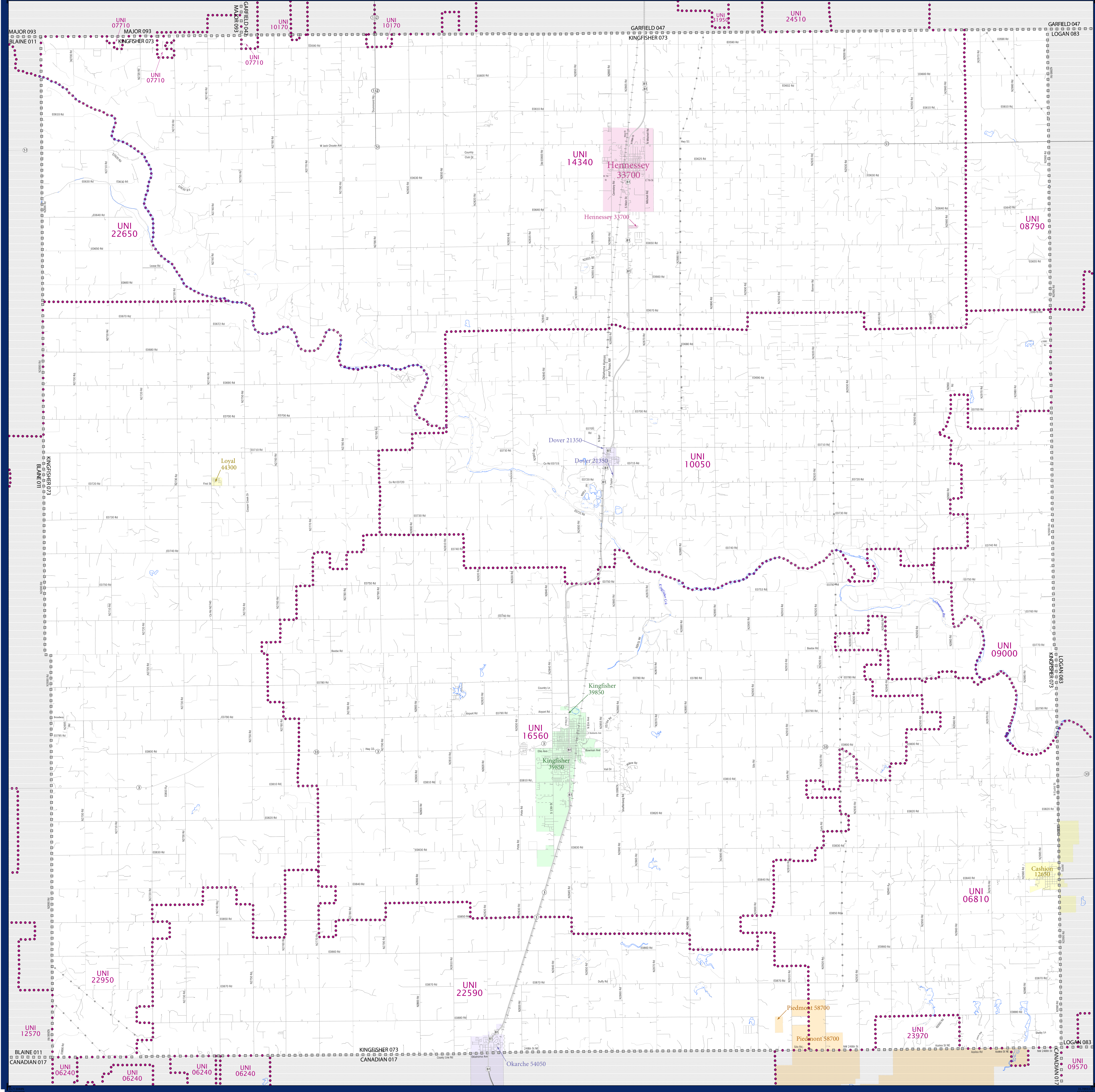


SCHOOL DISTRICT REFERENCE MAP (2010 CENSUS): Kingfisher County, OK



SYMBOL DESCRIPTION		LEGEND	
	Federal American Indian Reservation		L'ANSE RES 1880
	Off-Reservation Trust Land		T1880
	State American Indian Reservation		Tama Res 4125
	Alaska Native Regional Corporation		NANA ANRC 52120
	State (or statistically equivalent entity)		NEW YORK 36
	County (or statistically equivalent entity)		ERIE 029
	Misc Civil Division (MCD) ^{1,2}		Bristol town 07485
	Consolidated City		MILFORD 47500
	Incorporated Place ³		Davis 18100
	Census Designated Place (CDP) ³		Inline Village 35100
	Unified School District		UNI 03370
	Secondary School District		SEC 99965
	Elementary School District		ELM 02220

DESCRIPTION	SYMBOL	DESCRIPTION	SYMBOL
Interstate		Water Body	
U.S. Highway		Swamp or Marsh	
State Highway		Glacier	
Other Road		Military	
4WD Trail, Stamen, Alley, Walkway, or Ferry		National or State Park, Forest, or Recreation Area	
Railroad		Inset Area	
Pipeline or Power Line		Outside Subject Area	
Ridge or Fence			
Property Line			
Nonvisible Boundary or Feature Not Elsewhere Classified			

Where state, county, and/or MCD boundaries coincide, the map shows the boundary symbol for only the highest-ranking of these boundaries.

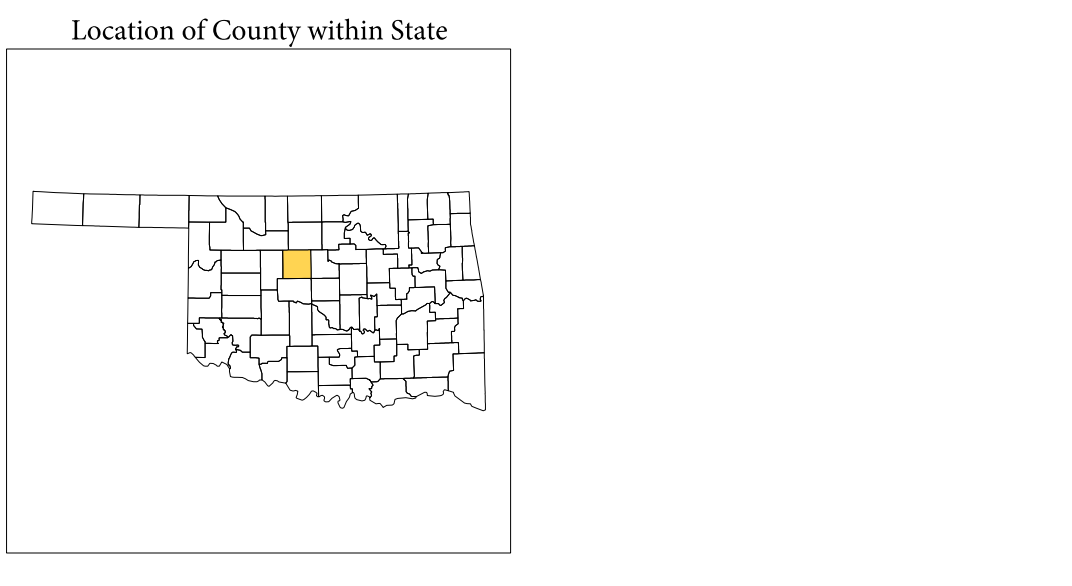
1 A "*" following an MCD name denotes a false MCD. A "*" following a place name indicates that a false MCD exists with the same name and FIPS code as the place; the false MCD label is not shown.

2 MCD boundaries are shown in the following states in which MCDs have functioning governments: Connecticut, Maine, Massachusetts, Michigan, Minnesota, New Hampshire, New Jersey, New York, Pennsylvania, Rhode Island, Vermont, and Wisconsin.

3 Place label color correlates to the place fill color.

SCHOOL DISTRICTS WITHIN COUNTY

TYPE	CODE	NAME
UNI	06810	Cashion Public Schools
UNI	07710	Cimarron Public Schools
UNI	08790	Covington-Geoghegan Schools
UNI	09000	Crescent Public Schools
UNI	10050	Dover Public Schools
UNI	10170	Drummond Public Schools
UNI	14340	Hennessey Public Schools
UNI	16560	Kingfisher Public Schools
UNI	22950	Okemune Public Schools
UNI	22650	Okemune Public Schools
UNI	22550	Loneoga Public Schools
UNI	23970	Piedmont Public Schools



All legal boundaries and names are as of January 1, 2010. The boundaries shown on this map are for Census Bureau statistical data collection and tabulation purposes only; their depiction and designation for statistical purposes does not constitute a determination of jurisdictional authority or rights of ownership or entitlement.

Geographic Vintage: 2010 Census (reference date: January 1, 2010)
 Data Source: U.S. Census Bureau's MAI/TIGER database (TAB100140)
 Map Created by Geography Division: November 28, 2010

Projection: Albers Equal Area Conic
 Datum: NAD 83
 Spheroid: GRS 80
 1st Standard Parallel: 34 10 47
 2nd Standard Parallel: 36 26 11
 Central Meridian: -98 43 53
 Latitude of Projection's Origin: 33 36 56
 False Easting: 0
 False Northing: 0

The plotted map scale is 1:7019

0 2 4 6 8 10 Miles

U.S. DEPARTMENT OF COMMERCE Economics and Statistics Administration U.S. Census Bureau

PARENT SHEET 1
 Total Sheets: 1
 Index Sheets: 0
 Parent Sheets: 1
 Inset Sheets: 0

NAME: Kingfisher County (073)
 ENTITY TYPE: County or statistically equivalent entity
 ST: Oklahoma (40)

2010 SD MAP (PARENT)
 20100419001