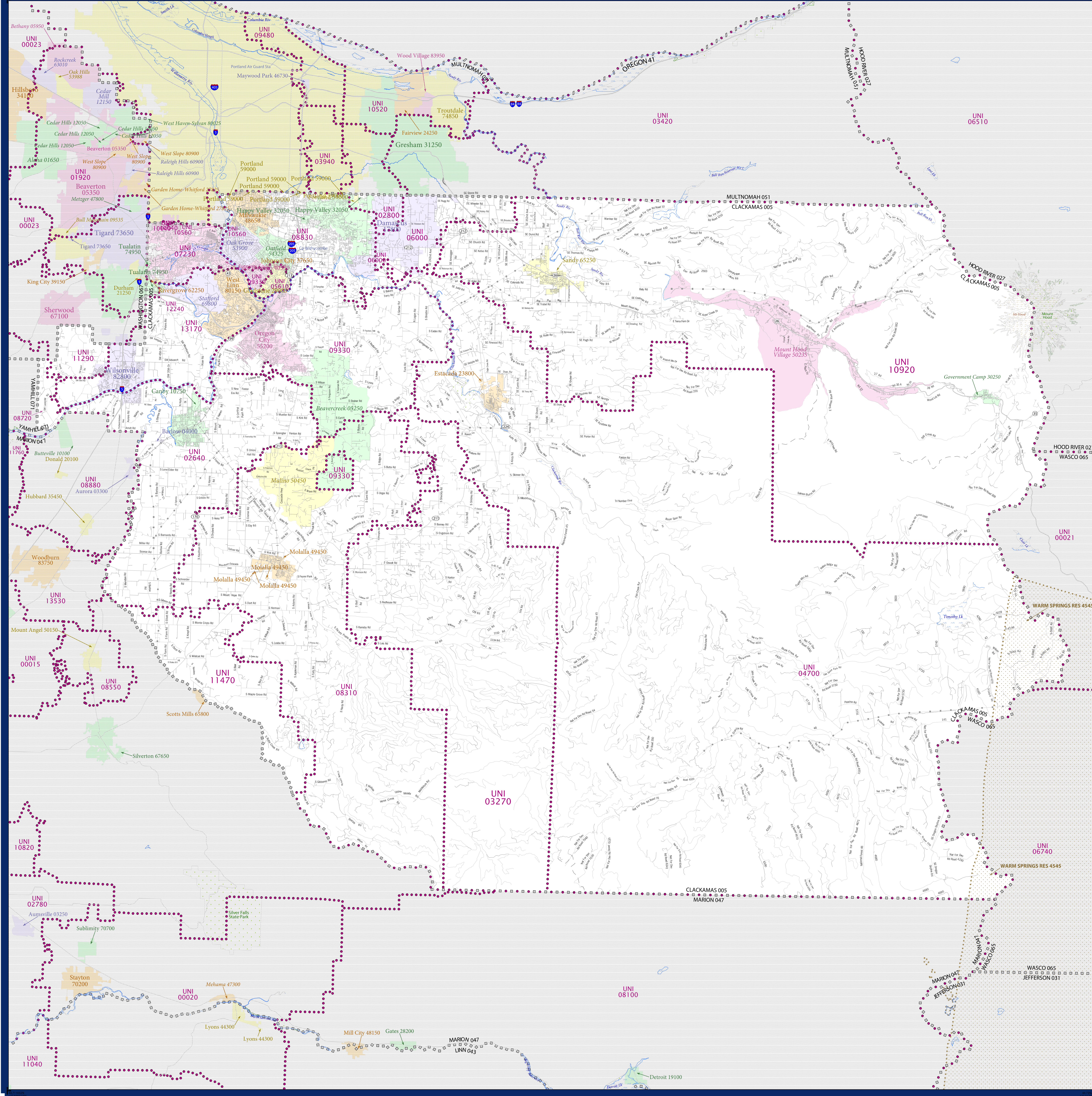


SCHOOL DISTRICT REFERENCE MAP (2010 CENSUS): Clackamas County, OR



LEGEND

SYMBOL DESCRIPTION	SYMBOL	LABEL STYLE
Federal American Indian Reservation	[Dotted pattern]	L'ANSE RES 1880
Off-Reservation Trust Land	[Dotted pattern]	T1880
State American Indian Reservation	[Dotted pattern]	Tama Res 4125
Alaska Native Regional Corporation	[Dotted pattern]	NANA ANRC 52120
State (or statistically equivalent entity)	[Dotted pattern]	NEW YORK 36
County (or statistically equivalent entity)	[Dotted pattern]	ERIE 029
Minor Civil Division (MCD) ^{1,2}	[Dotted pattern]	Bristol town 07485
Consolidated City	[Dotted pattern]	MILFORD 47500
Incorporated Place ^{1,3}	[Dotted pattern]	Davis 18100
Census Designated Place (CDP) ¹	[Dotted pattern]	Incline Village 35100
Unified School District	[Dotted pattern]	UNI 03370
Secondary School District	[Dotted pattern]	SEC 99965
Elementary School District	[Dotted pattern]	ELM 02220

DESCRIPTION	SYMBOL	DESCRIPTION	SYMBOL
Interstate	[Blue line with shield]	Water Body	[Blue wavy line]
U.S. Highway	[Black line with shield]	Swamp or Marsh	[Green wavy line]
State Highway	[Black line with shield]	Glacier	[Blue wavy line]
Other Road	[Black line]	Military	[Blue wavy line]
4WD Trail, Stairs, Alley, Walkway, or Ferry	[Black line]	National or State Park, Forest, or Recreation Area	[Blue wavy line]
Railroad	[Black line with cross-ticks]	Inset Area	[Grey box]
Pipeline or Power Line	[Black line with cross-ticks]	Outside Subject Area	[Grey box]
Ridge or Fence	[Black line with cross-ticks]		
Property Line	[Black line with cross-ticks]		
Nonvisible Boundary or Feature Not Elsewhere Classified	[Black line with cross-ticks]		

Where state, county, and/or MCD boundaries coincide, the map shows the boundary symbol for only the highest-ranking of these boundaries.

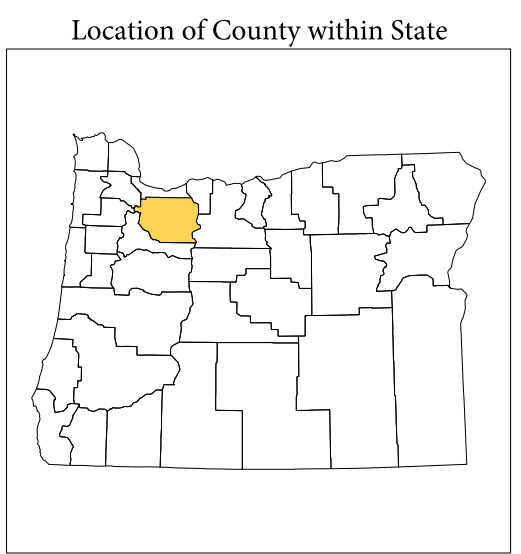
1 A "*" following an MCD name denotes a false MCD. A "*" following a place name indicates that a false MCD exists with the same name and FIPS code as the place; the false MCD label is not shown.

2 MCD boundaries are shown in the following states in which MCDs have functioning governments: Connecticut, Maine, Massachusetts, Michigan, Minnesota, New Hampshire, New Jersey, New York, Pennsylvania, Rhode Island, Vermont, and Wisconsin.

3 Place label color correlates to the place fill color.

SCHOOL DISTRICTS WITHIN COUNTY

TYPE	CODE	NAME
UNI	02600	Canby School District 86
UNI	02800	Centennial School District 289
UNI	03270	Cotton School District 53
UNI	04700	Estacada School District 108
UNI	05610	Gladstone School District 115
UNI	06000	Gresham-Barlow School District 13
UNI	07230	Lake Oswego School District 73
UNI	08200	Newberg School District 291
UNI	08310	Molalla River School District 35
UNI	08700	Newburg School District 291
UNI	08830	North Clackamas School District 12
UNI	09230	Oregon City School District 02
UNI	10040	Portland School District 13
UNI	10500	Roseburg School District 53 J
UNI	10920	Oregon Trail School District 46
UNI	11290	Sherwood School District 88 J
UNI	11470	Silver Falls School District 43
UNI	12240	Tigard-Tualatin School District 231
UNI	13170	West Linn School District 33



All legal boundaries and names are as of January 1, 2010. The boundaries shown on this map are for Census Bureau statistical data collection and tabulation purposes only; their depiction and designation for statistical purposes does not constitute a determination of jurisdictional authority or rights of ownership or entitlement.

Geographic: Vintage: 2010 Census (reference date: January 1, 2010)
 Data Source: U.S. Census Bureau's MAINTIGR database (TAB000141)
 Map Created by Geography Division: December 10, 2010

U.S. DEPARTMENT OF COMMERCE Economics and Statistics Administration U.S. Census Bureau

Projection: Albers Equal Area Conic
 Datum: NAD 83
 Spheroid: GRS 80
 1st Standard Parallel: 42 42 46
 2nd Standard Parallel: 45 34 55
 Central Meridian: -120 34 56
 Latitude of Projection's Origin: 41 59 44
 False Easting: 0
 False Northing: 0

Scale: 1:100,000
 0 4 8 12 16 20 kilometers
 0 1 2 3 4 miles

U.S. CENSUS BUREAU

PARENT SHEET 1
 Total Sheets: 1
 Index Sheets: 0
 Parent Sheets: 0
 Inset Sheets: 0

NAME: Clackamas County (005)
 ENTITY TYPE: County or statistically equivalent entity
 ST: Oregon (41)

2010 SD MAP (PARENT)
 2014100001