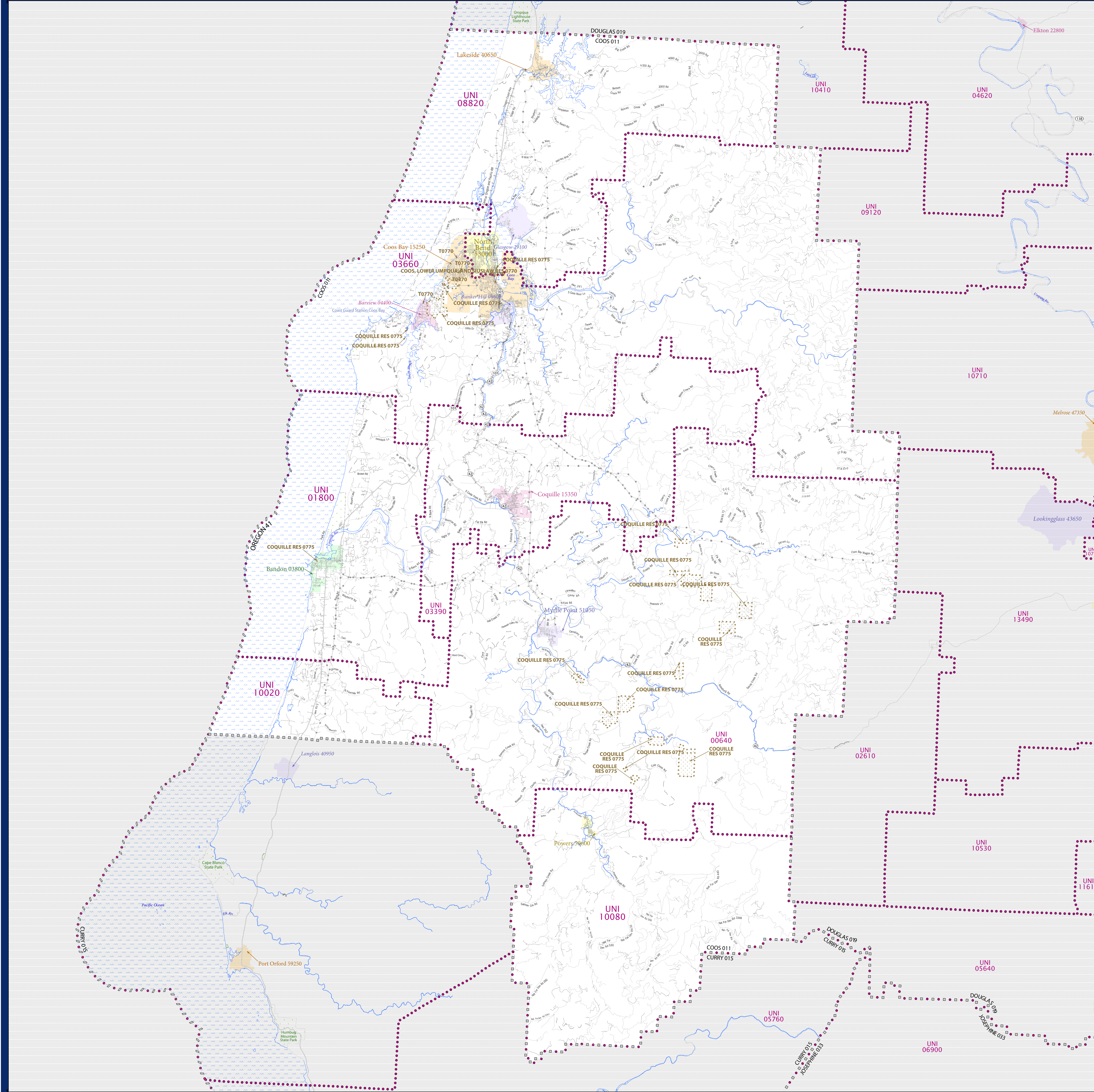


SCHOOL DISTRICT REFERENCE MAP (2010 CENSUS): Coos County, OR



LEGEND

SYMBOL DESCRIPTION	SYMBOL	LABEL STYLE
Federal American Indian Reservation	[Dotted pattern]	L'ANSE RES 1880
Off-Reservation Trust Land	[Dotted pattern]	T1880
State American Indian Reservation	[Dotted pattern]	Tama Res 4125
Alaska Native Regional Corporation	[Dotted pattern]	NANA ANRC 52120
State (or statistically equivalent entity)	[Dotted pattern]	NEW YORK 36
County (or statistically equivalent entity)	[Dotted pattern]	ERIE 029
Minor Civil Division (MCD) ^{1,2}	[Dotted pattern]	Bristol town 07485
Consolidated City	[Dotted pattern]	MILFORD 47500
Incorporated Place ³	[Dotted pattern]	Davis 18100
Census Designated Place (CDP) ³	[Dotted pattern]	Incline Village 35100
Unified School District	[Dotted pattern]	UNI 03370
Secondary School District	[Dotted pattern]	SEC 99965
Elementary School District	[Dotted pattern]	ELM 02220

DESCRIPTION	SYMBOL	DESCRIPTION	SYMBOL
Interstate	[Blue line with shield]	Water Body	[Blue wavy line]
U.S. Highway	[Black line with shield]	Swamp or Marsh	[Blue wavy line]
State Highway	[Black line with shield]	Glacier	[Blue wavy line]
Other Road	[Black line]	Military	[Blue wavy line]
4WD Trail, Steamer, Alley, Walkway, or Ferry	[Black line]	National or State Park, Forest, or Recreation Area	[Blue wavy line]
Railroad	[Black line with cross-ticks]	Inset Area	[Blue wavy line]
Pipeline or Power Line	[Black line]	Outside Subject Area	[Blue wavy line]
Ridge or Fence	[Black line]		
Property Line	[Black line]		
Nonvisible Boundary or Feature Not Elsewhere Classified	[Black line]		

Where state, county, and/or MCD boundaries coincide, the map shows the boundary symbol for only the highest-ranking of these boundaries.

1 A "*" following an MCD name denotes a false MCD. A "*" following a place name indicates that a false MCD exists with the same name and FIPS code as the place; the false MCD label is not shown.

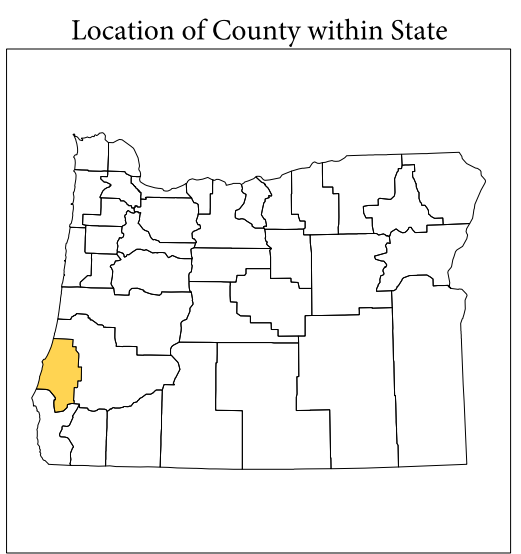
2 MCD boundaries are shown in the following states in which MCDs have functioning governments: Connecticut, Maine, Massachusetts, Michigan, Minnesota, New Hampshire, New Jersey, New York, Pennsylvania, Rhode Island, Vermont, and Wisconsin.

3 Place label color correlates to the place fill color.

OFF-RESERVATION TRUST LAND NAMES
 T0770 Coos, Lower Umpqua, and Siuslaw

SCHOOL DISTRICTS WITHIN COUNTY

TYPE	CODE	NAME
UNI	0060	Myrtle Point School District 41
UNI	01800	Bandon School District 54
UNI	03300	Coquille School District 8
UNI	03660	Coos Bay School District 9
UNI	08820	North Bend School District 13
UNI	10000	Port Orford-Langlois School District 23
UNI	10080	Powers School District 31



All legal boundaries and names are as of January 1, 2010. The boundaries shown on this map are for Census Bureau's statistical data collection and tabulation purposes only; their depiction and designation for statistical purposes does not constitute a determination of jurisdictional authority or rights of ownership or entitlement.

Geographic Vintage: 2010 Census (reference date: January 1, 2010)
 Data Source: U.S. Census Bureau's MAINTIGR database (TAB100141)
 Map Created by Geography Division: December 11, 2010

U.S. DEPARTMENT OF COMMERCE Economics and Statistics Administration U.S. Census Bureau

Projection: Albers Equal Area Conic
 Datum: NAD 83
 Spheroid: GRS 80
 1st Standard Parallel: 42 43 46
 2nd Standard Parallel: 45 34 55
 Central Meridian: -120 34 56
 Latitude of Projection's Origin: 41 59 44
 False Easting: 0
 False Northing: 0

0 2 4 6 8 10 12 14 16 18 20 Kilometers
 0 2 4 6 8 10 Miles

The plotted map scale is 1:52228

USCENSUSBUREAU

PARENT SHEET 1
 Total Sheets: 1
 Index Sheets: 0
 Parent Sheets: 1
 Inset Sheets: 0

NAME: Coos County (011)
 ENTITY TYPE: County or statistically equivalent entity
 ST: Oregon (41)

2010 SD MAP (PARENT)
 2010/11/10/01