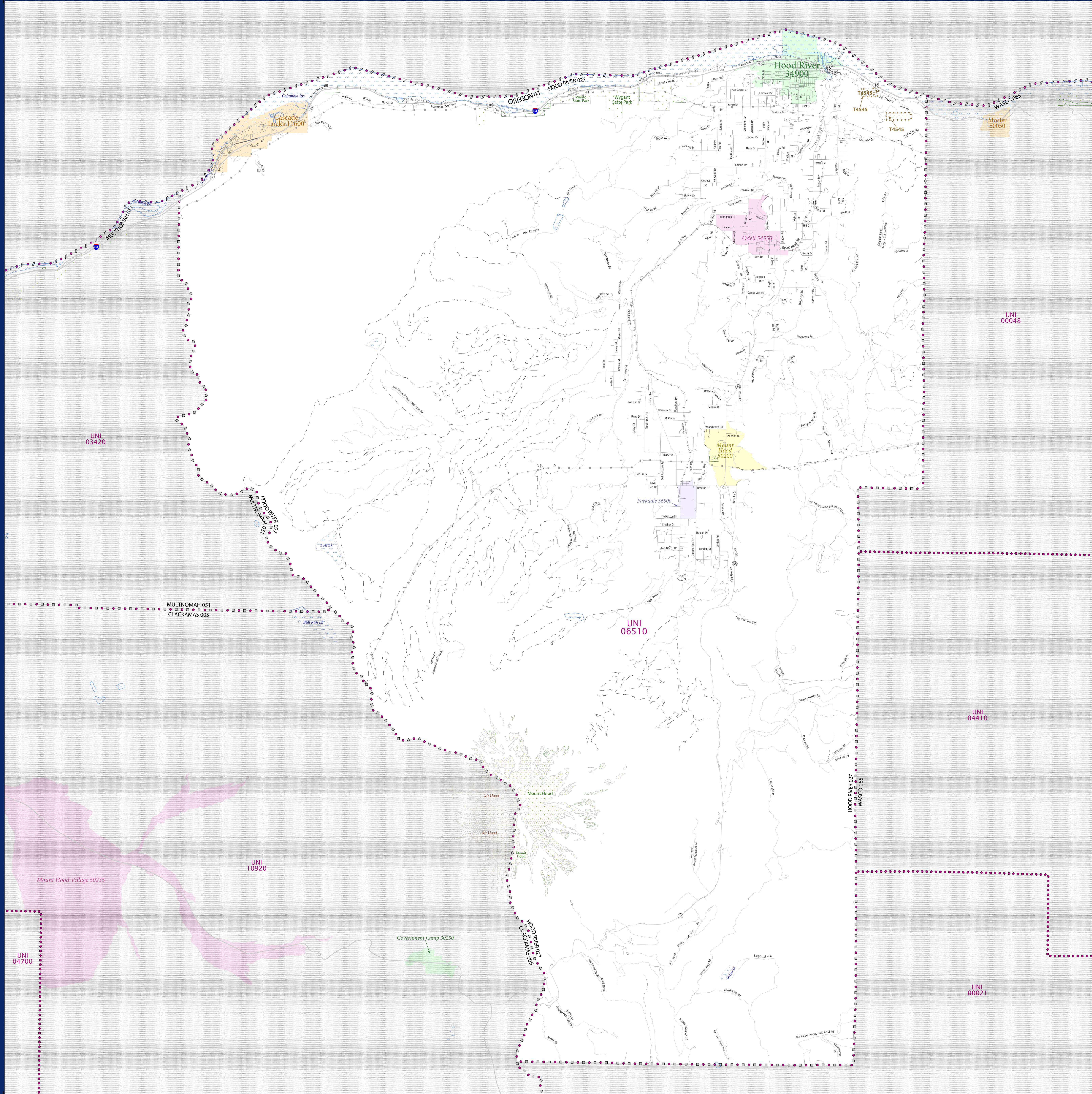


# SCHOOL DISTRICT REFERENCE MAP (2010 CENSUS): Hood River County, OR



SYMBOL DESCRIPTION		LEGEND	
Federal American Indian Reservation	[Symbol]	Federal American Indian Reservation	L'ANSE RES 1880
Off-Reservation Trust Land	[Symbol]	Off-Reservation Trust Land	T1880
State American Indian Reservation	[Symbol]	State American Indian Reservation	Tama Res 4125
Alaska Native Regional Corporation	[Symbol]	Alaska Native Regional Corporation	NANA ANRC 52120
State (or statistically equivalent entity)	[Symbol]	State (or statistically equivalent entity)	NEW YORK 36
County (or statistically equivalent entity)	[Symbol]	County (or statistically equivalent entity)	ERIE 029
Minor Civil Division (MCD) <sup>1,2</sup>	[Symbol]	Minor Civil Division (MCD) <sup>1,2</sup>	Bristol town 07485
Consolidated City	[Symbol]	Consolidated City	MILFORD 47500
Incorporated Place <sup>3</sup>	[Symbol]	Incorporated Place <sup>3</sup>	Davis 18100
Census Designated Place (CDP) <sup>3</sup>	[Symbol]	Census Designated Place (CDP) <sup>3</sup>	Incline Village 35100
Unified School District	[Symbol]	Unified School District	UNI 03370
Secondary School District	[Symbol]	Secondary School District	SEC 99965
Elementary School District	[Symbol]	Elementary School District	ELM 02220

DESCRIPTION	SYMBOL	DESCRIPTION	SYMBOL
Interstate	[Symbol]	Water Body	[Symbol]
U.S. Highway	[Symbol]	Swamp or Marsh	[Symbol]
State Highway	[Symbol]	Glacier	[Symbol]
Other Road	[Symbol]	Military	[Symbol]
Other Road	[Symbol]	National or State Park, Forest, or Recreation Area	[Symbol]
Railroad	[Symbol]	Inset Area	[Symbol]
Pipeline or Power Line	[Symbol]	Outside Subject Area	[Symbol]
Ridge or Fence	[Symbol]		
Property Line	[Symbol]		
Nonvisible Boundary or Feature Not Elsewhere Classified	[Symbol]		

Where state, county, and/or MCD boundaries coincide, the map shows the boundary symbol for only the highest-ranking of these boundaries.

1 A "\*" following an MCD name denotes a false MCD. A "\*" following a place name indicates that a false MCD exists with the same name and FIPS code as the place; the false MCD label is not shown.

2 MCD boundaries are shown in the following states in which MCDs have functioning governments: Connecticut, Maine, Massachusetts, Michigan, Minnesota, New Hampshire, New Jersey, New York, Pennsylvania, Rhode Island, Vermont, and Wisconsin.

3 Place label color correlates to the place fill color.

**OFF-RESERVATION TRUST LAND NAMES**  
 T4545 Warm Springs

**SCHOOL DISTRICTS WITHIN COUNTY**

TYPE	CODE	NAME
UNI	06510	Hood River County School District 1

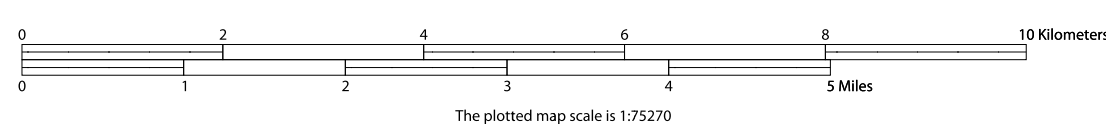


All legal boundaries and names are as of January 1, 2010. The boundaries shown on this map are for Census Bureau statistical data collection and tabulation purposes only; their depiction and designation for statistical purposes does not constitute a determination of jurisdictional authority or rights of ownership or entitlement.

Geographic Vintage: 2010 Census (reference date: January 1, 2010)  
 Data Source: U.S. Census Bureau's MAINTIGR database (TAB100141)  
 Map Created by Geography Division: December 11, 2010

U.S. DEPARTMENT OF COMMERCE Economics and Statistics Administration U.S. Census Bureau

Projection: Albers Equal Area Conic  
 Datum: NAD 83  
 Spheroid: GRS 80  
 1st Standard Parallel: 42 43 46  
 2nd Standard Parallel: 45 34 55  
 Central Meridian: -120 34 56  
 Latitude of Projection's Origin: 41 59 44  
 False Easting: 0  
 False Northing: 0



U.S. CENSUS BUREAU

PARENT SHEET 1  
 Total Sheets: 1  
 Index Sheets: 0  
 Parent Sheets: 1  
 Inset Sheets: 0

NAME: Hood River County (027)  
 ENTITY TYPE: County or statistically equivalent entity  
 ST: Oregon (41)

2010 SD MAP (PARENT)  
 201041027001