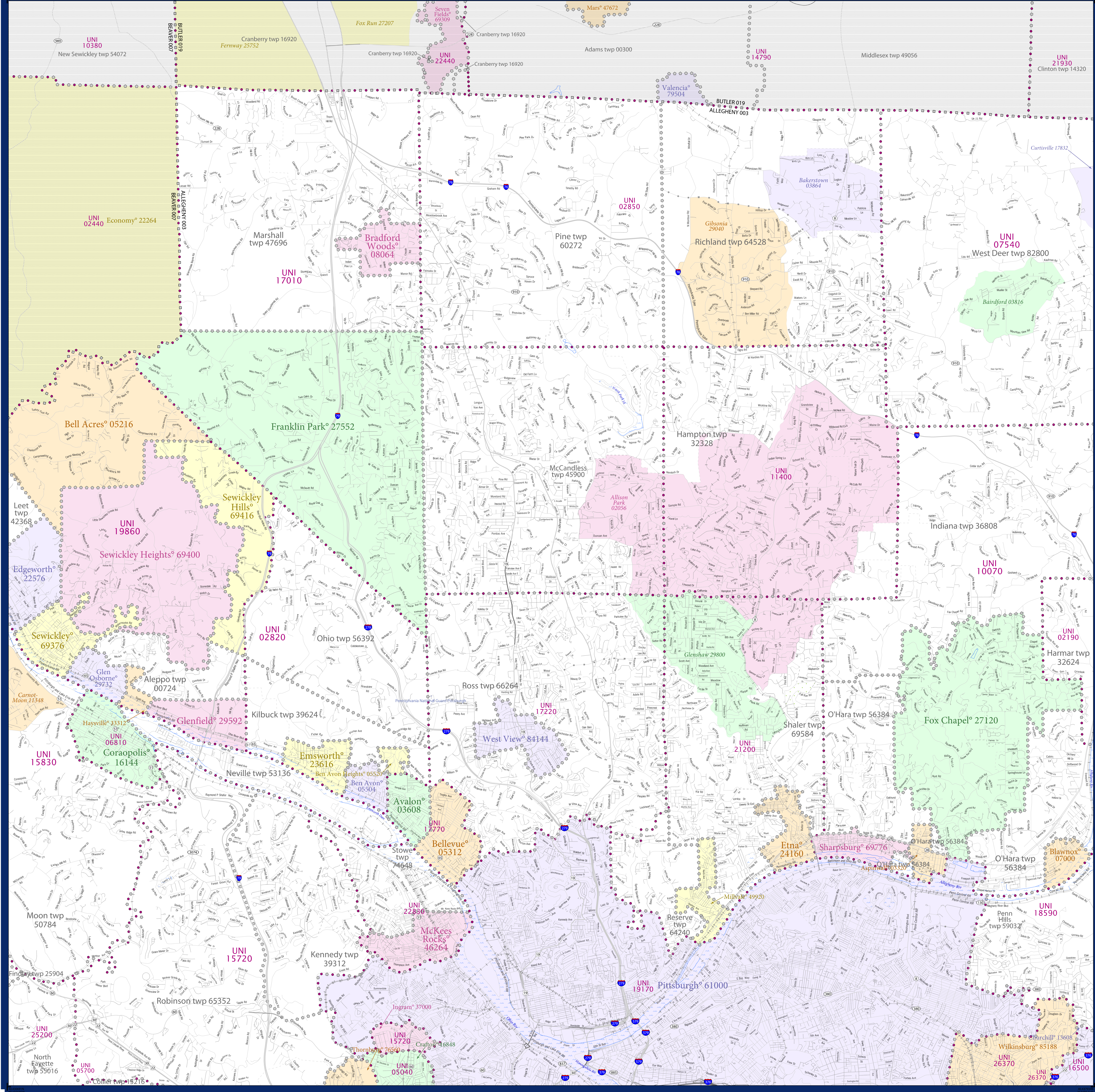


# SCHOOL DISTRICT REFERENCE MAP (2010 CENSUS): Allegheny County, PA



### LEGEND

SYMBOL DESCRIPTION	SYMBOL	SYMBOL DESCRIPTION	SYMBOL
Federal American Indian Reservation	[Symbol]	Water Body	[Symbol]
Off-Reservation Trust Land	[Symbol]	Swamp or Marsh	[Symbol]
State American Indian Reservation	[Symbol]	Glacier	[Symbol]
Alaska Native Regional Corporation	[Symbol]	Military	[Symbol]
State (or statistically equivalent entity)	[Symbol]	National or State Park, Forest, or Recreation Area	[Symbol]
County (or statistically equivalent entity)	[Symbol]	Inset Area	[Symbol]
Minor Civil Division (MCD) <sup>1,2</sup>	[Symbol]	Outside Subject Area	[Symbol]
Consolidated City	[Symbol]		
Incorporated Place <sup>1,3</sup>	[Symbol]		
Census Designated Place (CDP) <sup>3</sup>	[Symbol]		
Unified School District	[Symbol]		
Secondary School District	[Symbol]		
Elementary School District	[Symbol]		

Where state, county, and/or MCD boundaries coincide, the map shows the boundary symbol for only the highest-ranking of these boundaries.

1 A "\*" following an MCD name denotes a false MCD. A "\*" following a place name indicates that a false MCD exists with the same name and FIPS code as the place; the false MCD label is not shown.

2 MCD boundaries are shown in the following states in which MCDs have functioning governments: Connecticut, Maine, Massachusetts, Michigan, Minnesota, New Hampshire, New Jersey, New York, Pennsylvania, Rhode Island, Vermont, and Wisconsin.

3 Place label color correlates to the place fill color.

### SCHOOL DISTRICTS WITHIN COUNTY

TYPE	CODE	NAME
UNI	02100	Allegheny Valley School District
UNI	02820	Avenworth School District
UNI	02850	Pine-Richland School District
UNI	05040	Carlinton School District
UNI	05700	Charles Valley School District
UNI	06810	Cornell School District
UNI	07540	Deer Lakes School District
UNI	10070	Fox Chapel Area School District
UNI	11400	Hampton Township School District
UNI	15730	Monroeville School District
UNI	15830	Moon Area School District
UNI	16500	Woodland Hills School District
UNI	17010	North Allegheny School District
UNI	17220	North Hills School District
UNI	17770	Northgate School District
UNI	18590	Penn Hills School District
UNI	19170	Perrygo School District
UNI	19860	Quaker Valley School District
UNI	21200	Shaler Area School District
UNI	22830	Sto-Box School District
UNI	23200	West Allegheny School District
UNI	26370	Wilkesburg Borough School District

Location of County within State

Sheet Location within Entity

All legal boundaries and names are as of January 1, 2010. The boundaries shown on this map are for census bureau statistical data collection and tabulation purposes only; their depiction and designation for statistical purposes does not constitute a determination of jurisdictional authority or rights of ownership or entitlement.

Geographic: Vintage: 2010 Census (reference date: January 1, 2010)  
 Data Source: U.S. Census Bureau's MA7/TIGER database (TAB010142)  
 Map Created by Geography Division: January 04, 2011

Projection: Albers Equal Area Conic  
 Datum: NAD83  
 Spheroid: GRS 80  
 1st Standard Parallel: 40 11 11  
 2nd Standard Parallel: 42 02 60  
 Central Meridian: -77 37 15  
 Latitude of Projection's Origin: 39 43 14  
 False Easting: 0  
 False Northing: 0

The plotted map scale is 1:400000

Key to Sheets

1	2	3
4	5	6

PARENT SHEET 2  
 Total Sheets: 7  
 Index Sheets: 1  
 Parent Sheets: 6  
 Inset Sheets: 0

NAME: Allegheny County (003)  
 ENTITY TYPE: County or statistically equivalent entity  
 ST: Pennsylvania (42)

2010 SD MAP (PARENT)  
 2014030002