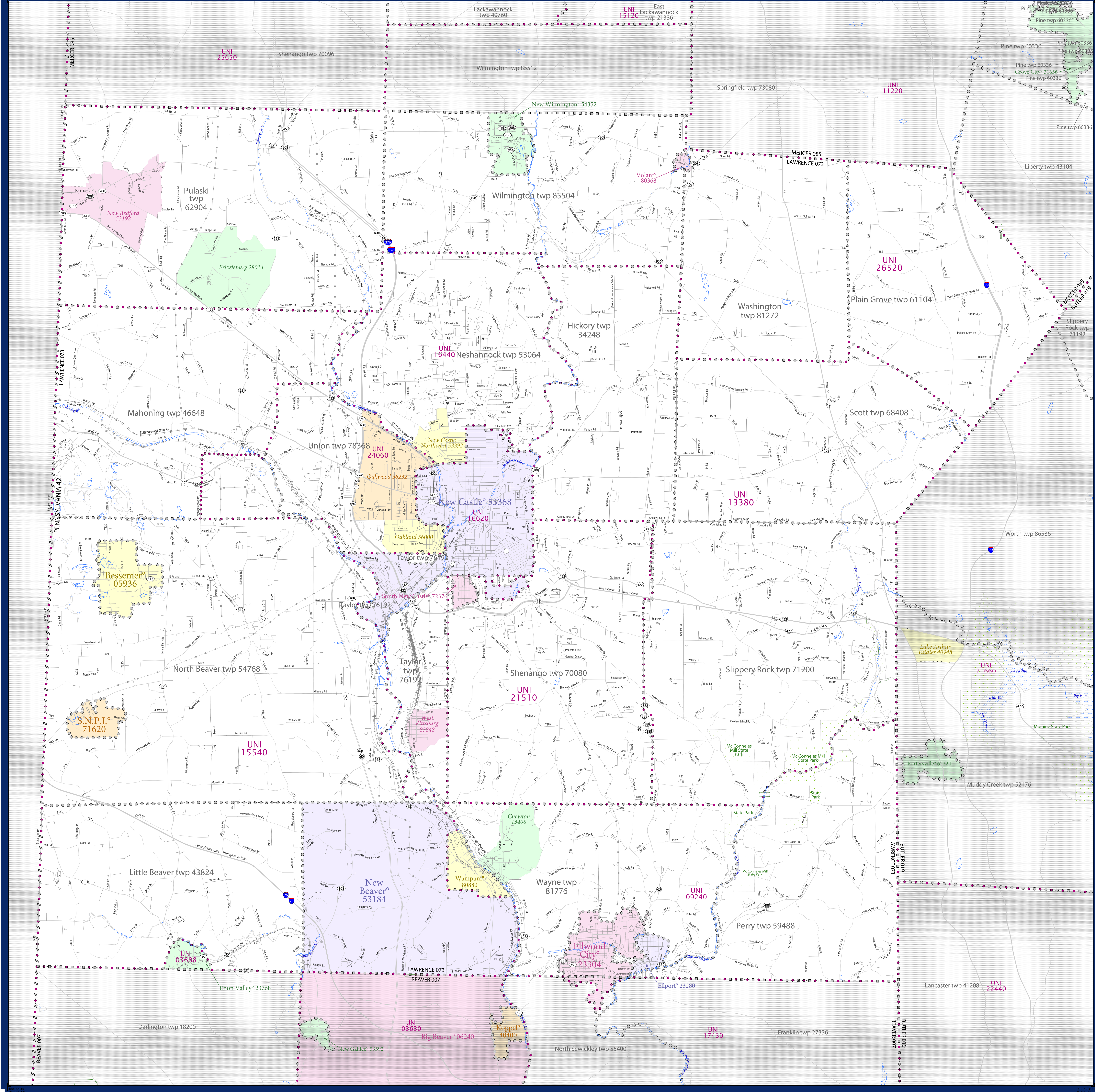


# SCHOOL DISTRICT REFERENCE MAP (2010 CENSUS): Lawrence County, PA



SYMBOL DESCRIPTION		LEGEND	
Federal American Indian Reservation	[Symbol]	L'ANSE RES 1880	[Symbol]
Off-Reservation Trust Land	[Symbol]	Tama Res 4125	[Symbol]
State American Indian Reservation	[Symbol]	NANA ANRC 52120	[Symbol]
Alaska Native Regional Corporation	[Symbol]	NEW YORK 36	[Symbol]
State (or statistically equivalent entity)	[Symbol]	ERIE 029	[Symbol]
County (or statistically equivalent entity)	[Symbol]	Bristol town 07485	[Symbol]
Minor Civil Division (MCD) <sup>1,2</sup>	[Symbol]	MILFORD 47500	[Symbol]
Consolidated City	[Symbol]	Davis 18100	[Symbol]
Incorporated Place <sup>3</sup>	[Symbol]	Incline Village 35100	[Symbol]
Census Designated Place (CDP) <sup>3</sup>	[Symbol]	UNI 03370	[Symbol]
Unified School District	[Symbol]	SEC 99965	[Symbol]
Secondary School District	[Symbol]	ELM 02220	[Symbol]
Elementary School District	[Symbol]		

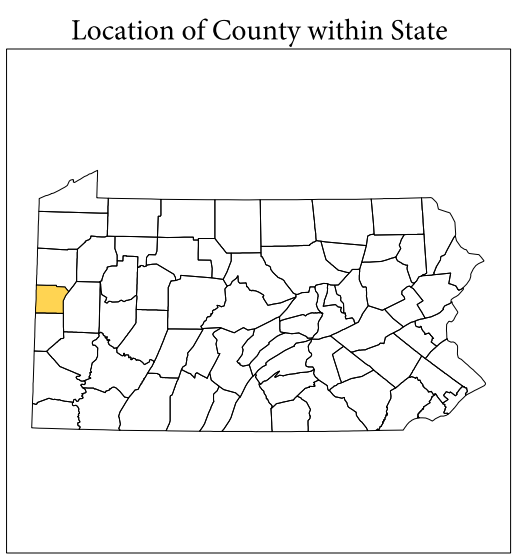
Where state, county, and/or MCD boundaries coincide, the map shows the boundary symbol for only the highest-ranking of these boundaries.

1 A "\*" following an MCD name denotes a false MCD. A "\*" following a place name indicates that a false MCD exists with the same name and FIPS code as the place; the false MCD label is not shown.

2 MCD boundaries are shown in the following states in which MCDs have functioning governments: Connecticut, Maine, Massachusetts, Michigan, Minnesota, New Hampshire, New Jersey, New York, Pennsylvania, Rhode Island, Vermont, and Wisconsin.

3 Place label color correlates to the place fill color.

SCHOOL DISTRICTS WITHIN COUNTY		
TYPE	CODE	NAME
UNI	03060	Blackhawk School District
UNI	09240	Ellwood City Area School District
UNI	13380	Lawert School District
UNI	15540	Mohawk Area School District
UNI	16440	Neshannock Township School District
UNI	16620	New Castle Area School District
UNI	21510	Shenango Area School District
UNI	24060	Union Area School District
UNI	26520	Wilmington Area School District



All legal boundaries and names are as of January 1, 2010. The boundaries shown on this map are for Census Bureau statistical data collection and tabulation purposes only; their depiction and designation for statistical purposes does not constitute a determination of jurisdictional authority or rights of ownership or entitlement.

Geographic: Vintage: 2010 Census (reference date: January 1, 2010)  
 Data Source: U.S. Census Bureau's MAINTENANCE database (TAB100142)  
 Map Created by Geography Division: December 11, 2010

U.S. DEPARTMENT OF COMMERCE Economics and Statistics Administration U.S. Census Bureau

Projection: Albers Equal Area Conic  
 Datum: NAD83  
 Spheroid: GRS 80  
 1st Standard Parallel: 40 11 11  
 2nd Standard Parallel: 42 02 60  
 Central Meridian: -77 37 15  
 Latitude of Projection's Origin: 39 43 14  
 False Easting: 0  
 False Northing: 0

The plotted map scale is 1:54000

USCENSUSBUREAU

PARENT SHEET 1  
 Total Sheets: 1  
 Index Sheets: 0  
 Parent Sheets: 1  
 Inset Sheets: 0

NAME: Lawrence County (073)  
 ENTITY TYPE: County or statistically equivalent entity  
 ST: Pennsylvania (42)