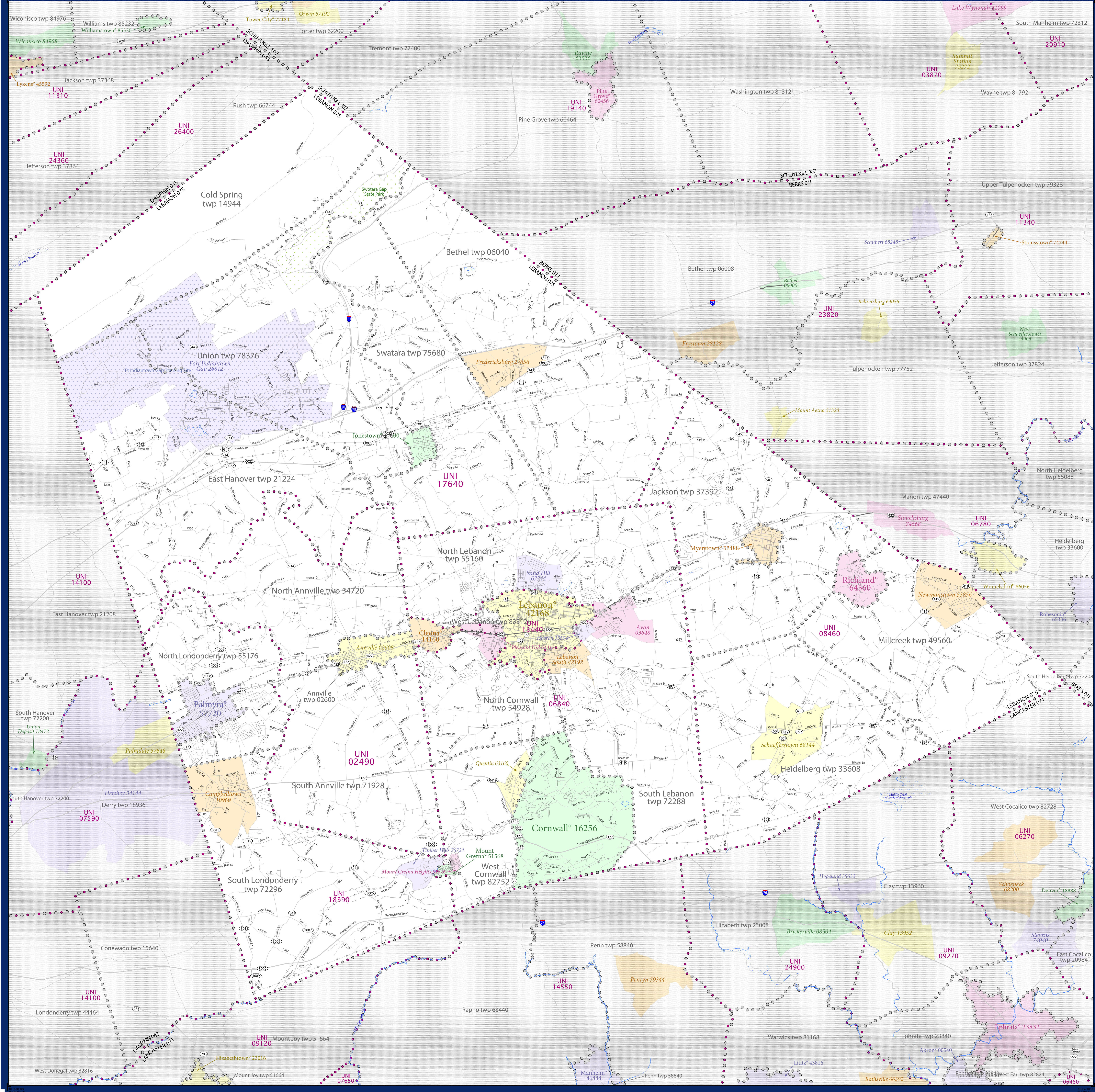


# SCHOOL DISTRICT REFERENCE MAP (2010 CENSUS): Lebanon County, PA



SYMBOL DESCRIPTION		LEGEND	
Federal American Indian Reservation	[Symbol]	L'ANSE RES 1880	[Symbol]
Off-Reservation Trust Land	[Symbol]	T1880	[Symbol]
State American Indian Reservation	[Symbol]	Tama Res 4125	[Symbol]
Alaska Native Regional Corporation	[Symbol]	NANA ANRC 52120	[Symbol]
State (or statistically equivalent entity)	[Symbol]	NEW YORK 36	[Symbol]
County (or statistically equivalent entity)	[Symbol]	ERIE 029	[Symbol]
Minor Civil Division (MCD) <sup>1,2</sup>	[Symbol]	Bristol town 07485	[Symbol]
Consolidated City	[Symbol]	MILFORD 47500	[Symbol]
Incorporated Place <sup>3</sup>	[Symbol]	Davis 18100	[Symbol]
Census Designated Place (CDP) <sup>3</sup>	[Symbol]	Incline Village 35100	[Symbol]
Unified School District	[Symbol]	UNI 03370	[Symbol]
Secondary School District	[Symbol]	SEC 99965	[Symbol]
Elementary School District	[Symbol]	ELM 02220	[Symbol]

DESCRIPTION	SYMBOL	DESCRIPTION	SYMBOL
Interstate	[Symbol]	Water Body	[Symbol]
U.S. Highway	[Symbol]	Swamp or Marsh	[Symbol]
State Highway	[Symbol]	Glacier	[Symbol]
Other Road	[Symbol]	Military	[Symbol]
Railroad	[Symbol]	National or State Park, Forest, or Reservation Area	[Symbol]
Pipeline or Power Line	[Symbol]	Inset Area	[Symbol]
Ridge or Fence	[Symbol]	Outside Subject Area	[Symbol]
Property Line	[Symbol]		
Nonvisible Boundary or Feature Not Elsewhere Classified	[Symbol]		

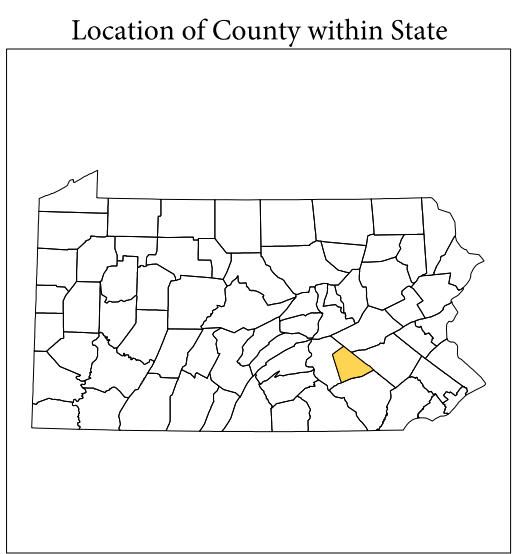
Where state, county, and/or MCD boundaries coincide, the map shows the boundary symbol for only the highest-ranking of these boundaries.

1 A "\*" following an MCD name denotes a false MCD. A "\*" following a place name indicates that a false MCD exists with the same name and FIPS code as the place; the false MCD label is not shown.

2 MCD boundaries are shown in the following states in which MCDs have functioning governments: Connecticut, Maine, Massachusetts, Michigan, Minnesota, New Hampshire, New Jersey, New York, Pennsylvania, Rhode Island, Vermont, and Wisconsin.

3 Place label color correlates to the place fill color.

SCHOOL DISTRICTS WITHIN COUNTY	TYPE	CODE	NAME
Union	UNI	03370	Union
North Lebanon	UNI	05160	North Lebanon
Lebanon	UNI	04218	Lebanon
West Lebanon	UNI	08331	West Lebanon
Lebanon South	UNI	04219	Lebanon South
South Lebanon	UNI	07288	South Lebanon
North Cornwall	UNI	05928	North Cornwall
South Cornwall	UNI	08275	South Cornwall
East Hanover	UNI	02124	East Hanover
North Annville	UNI	05472	North Annville
South Annville	UNI	07192	South Annville
Palmyra	UNI	05720	Palmyra
North Londonderry	UNI	05517	North Londonderry
South Londonderry	UNI	07229	South Londonderry
East Hanover	UNI	02108	East Hanover
South Hanover	UNI	07220	South Hanover
West Donegal	UNI	08281	West Donegal
East Donegal	UNI	08282	East Donegal
North Heidelberg	UNI	05508	North Heidelberg
South Heidelberg	UNI	07228	South Heidelberg
West Cocalico	UNI	08278	West Cocalico
East Cocalico	UNI	02098	East Cocalico
North Heidelberg	UNI	05508	North Heidelberg
South Heidelberg	UNI	07228	South Heidelberg
West Cocalico	UNI	08278	West Cocalico
East Cocalico	UNI	02098	East Cocalico



All legal boundaries and names are as of January 1, 2010. The boundaries shown on this map are for Census Bureau statistical data collection and tabulation purposes only; their depiction and designation for statistical purposes does not constitute a determination of jurisdictional authority or rights of ownership or entitlement.

Geographic: Vintage: 2010 Census (reference date: January 1, 2010)  
 Data Source: U.S. Census Bureau's MAINTIGR database (TAB100142)  
 Map Created by Geography Division: December 11, 2010

U.S. DEPARTMENT OF COMMERCE Economics and Statistics Administration U.S. Census Bureau

Projection: Albers Equal Area Conic  
 Datum: NAD83  
 Spheroid: GRS 80  
 1st Standard Parallel: 40 11 11  
 2nd Standard Parallel: 42 02 00  
 Central Meridian: -77 37 15  
 Latitude of Projection's Origin: 39 43 14  
 False Easting: 0  
 False Northing: 0

The plotted map scale is 1:69664

USCENSUSBUREAU

PARENT SHEET 1  
 Total Sheets: 1  
 Index Sheets: 0  
 Parent Sheets: 1  
 Inset Sheets: 0

NAME: Lebanon County (075)  
 ENTITY TYPE: County or statistically equivalent entity  
 ST: Pennsylvania (42)

2010 SD MAP (PARENT)  
 20100415001