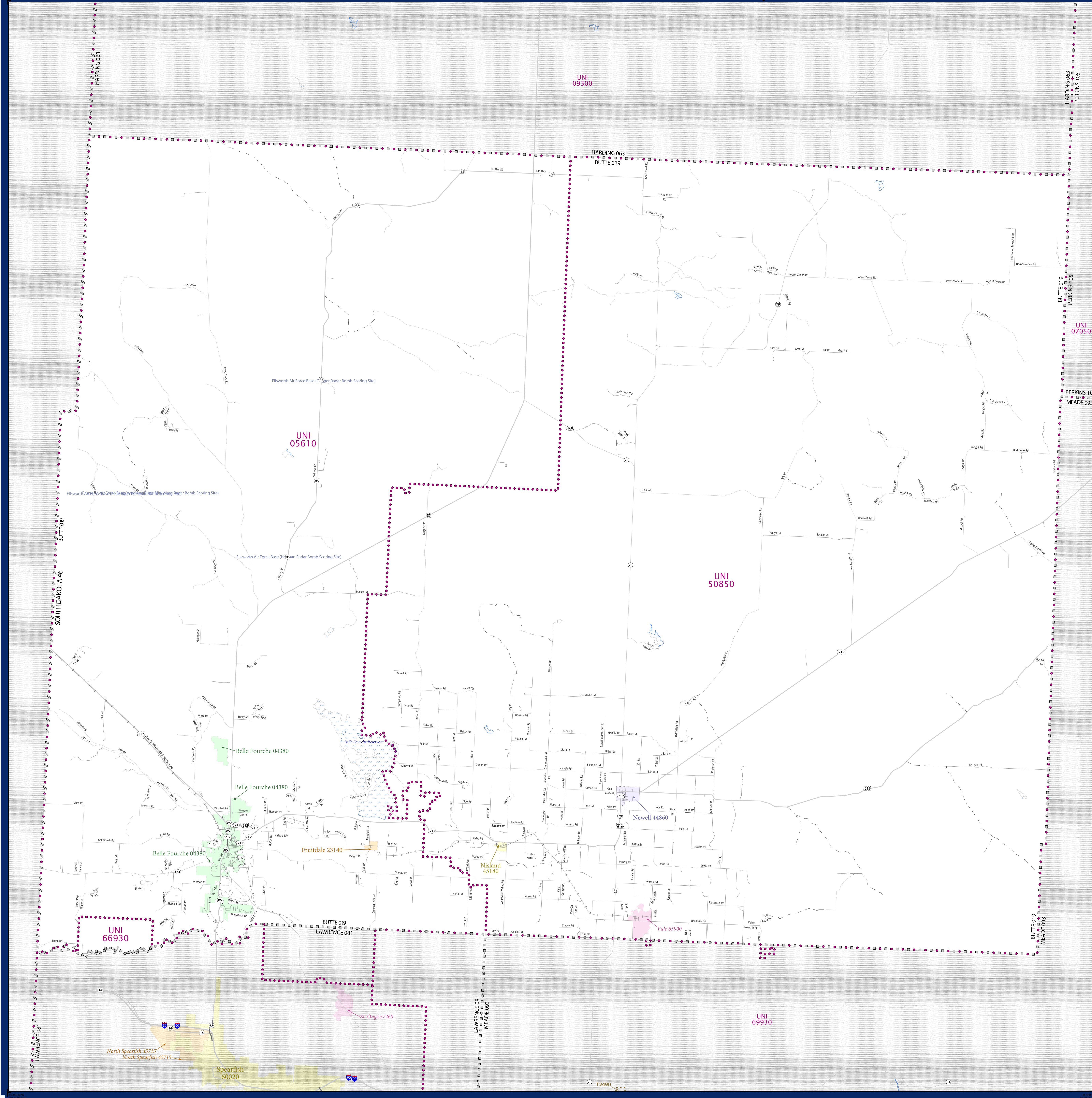


SCHOOL DISTRICT REFERENCE MAP (2010 CENSUS): Butte County, SD



LEGEND

SYMBOL DESCRIPTION	SYMBOL	LABEL STYLE
Federal American Indian Reservation	[Dotted pattern]	L'ANSE RES 1880
Off-Reservation Trust Land	[Dotted pattern]	T1880
State American Indian Reservation	[Dotted pattern]	Tama Res 4125
Alaska Native Regional Corporation	[Dotted pattern]	NANA ANRC 52120
State (or statistically equivalent entity)	[Dotted pattern]	NEW YORK 36
County (or statistically equivalent entity)	[Dotted pattern]	ERIE 029
Minor Civil Division (MCD) ^{1,2}	[Dotted pattern]	Bristol town 07485
Consolidated City	[Dotted pattern]	MILFORD 47500
Incorporated Place ³	[Dotted pattern]	Davis 18100
Census Designated Place (CDP) ³	[Dotted pattern]	Incline Village 35100
Unified School District	[Dotted pattern]	UNI 03370
Secondary School District	[Dotted pattern]	SEC 99965
Elementary School District	[Dotted pattern]	ELM 02220

DESCRIPTION	SYMBOL	DESCRIPTION	SYMBOL
Interstate	[Thick solid line]	Water Body	[Blue wavy line]
U.S. Highway	[Thin solid line]	Swamp or Marsh	[Blue wavy line]
State Highway	[Thin solid line]	Glacier	[Blue wavy line]
Other Road	[Thin solid line]	Military	[Blue wavy line]
Other Road, Alley, Walkway, or Ferry	[Thin solid line]	National or State Park, Forest, or Recreation Area	[Blue wavy line]
Railroad	[Thin solid line]	Inset Area	[Blue wavy line]
Pipeline or Power Line	[Thin solid line]	Outside Subject Area	[Blue wavy line]
Ridge or Fence	[Thin solid line]		
Property Line	[Thin solid line]		
Nonvisible Boundary or Feature Not Elsewhere Classified	[Thin solid line]		

Where state, county, and/or MCD boundaries coincide, the map shows the boundary symbol for only the highest-ranking of these boundaries.

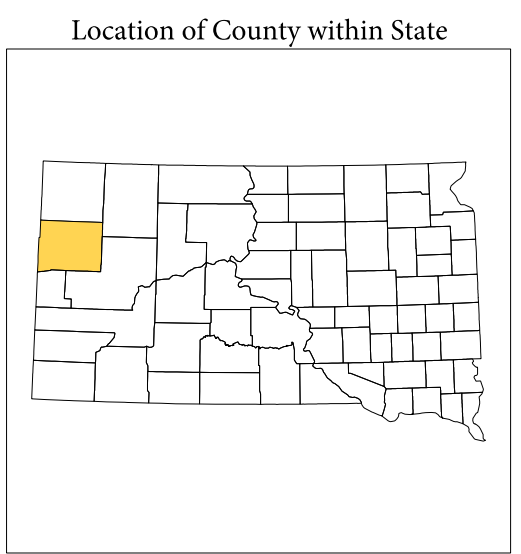
1 A "*" following an MCD name denotes a false MCD. A "*" following a place name indicates that a false MCD exists with the same name and FIPS code as the place; the false MCD label is not shown.

2 MCD boundaries are shown in the following states in which MCDs have functioning governments: Connecticut, Maine, Massachusetts, Michigan, Minnesota, New Hampshire, New Jersey, New York, Pennsylvania, Rhode Island, Vermont, and Wisconsin.

3 Place label color correlates to the place fill color.

SCHOOL DISTRICTS WITHIN COUNTY

TYPE	CODE	NAME
UNI	05610	Belle Fourche School District 09-1
UNI	50850	Newell School District 09-2
UNI	66930	Spearfish School District 40-2

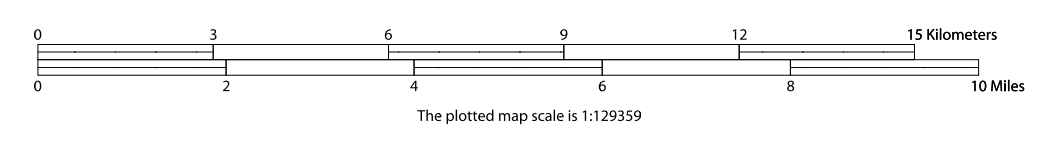


All legal boundaries and names are as of January 1, 2010. The boundaries shown on this map are for Census Bureau statistical data collection and tabulation purposes only; their depiction and designation for statistical purposes does not constitute a determination of jurisdictional authority or rights of ownership or entitlement.

Geographic Vintage: 2010 Census (reference date: January 1, 2010)
 Data Source: U.S. Census Bureau's MAINTIGR database (TAB100146)
 Map Created by Geography Division: November 28, 2010

U.S. DEPARTMENT OF COMMERCE Economics and Statistics Administration U.S. Census Bureau

Projection: Albers Equal Area Conic
 Datum: NAD83
 Spheroid: GRS 80
 1st Standard Parallel: 43 03 20
 2nd Standard Parallel: 45 21 35
 Central Meridian: -100 14 55
 Latitude of Projection's Origin: 42 28 46
 False Easting: 0
 False Northing: 0



USCENSUSBUREAU

PARENT SHEET 1
 Total Sheets: 1
 Index Sheets: 0
 Parent Sheets: 0
 Inset Sheets: 0

NAME: Butte County (019)
 ENTITY TYPE: County or statistically equivalent entity
 ST: South Dakota (46)

2010 SD MAP (PARENT)
 2010461001