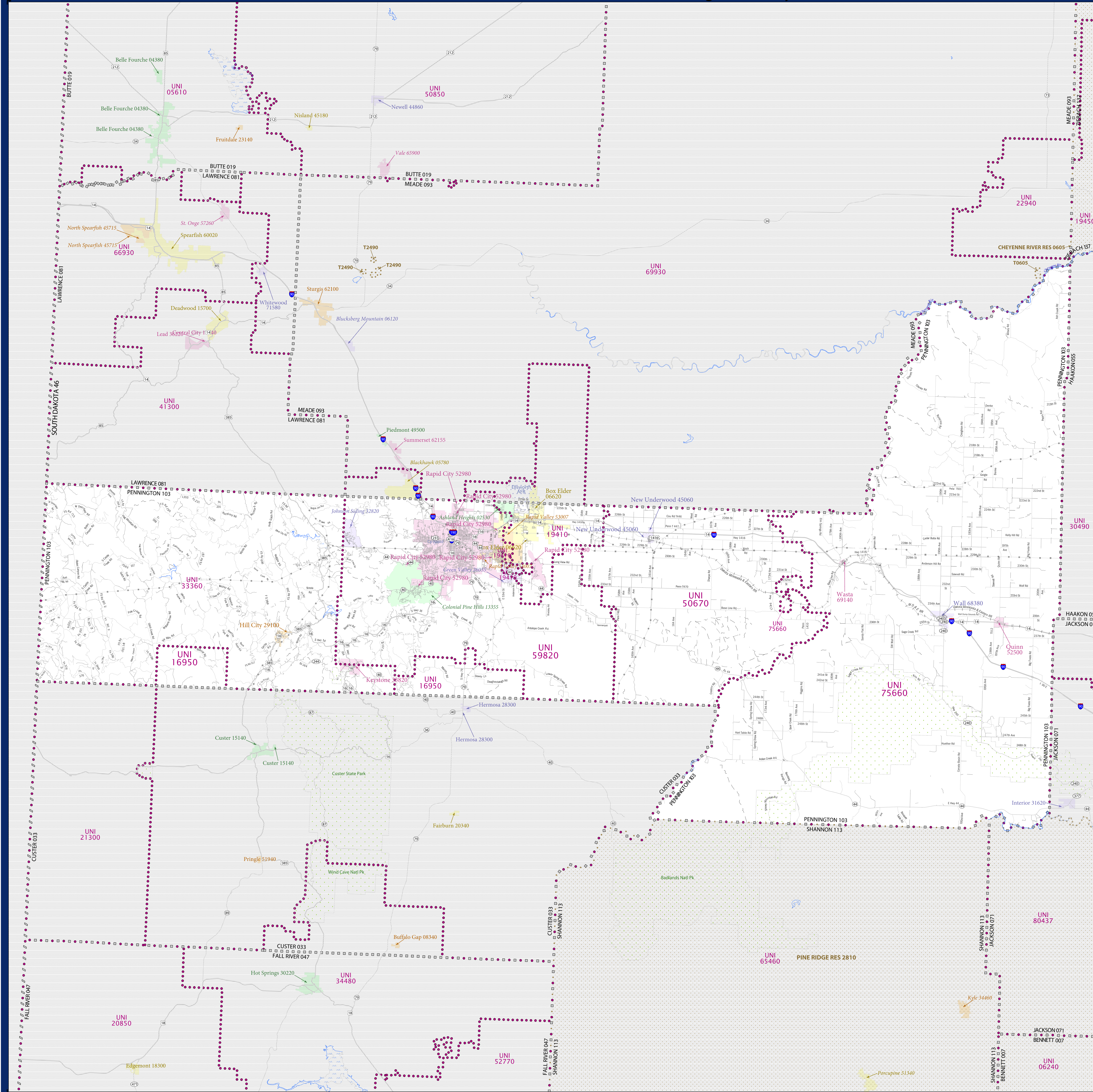


SCHOOL DISTRICT REFERENCE MAP (2010 CENSUS): Pennington County, SD



LEGEND

SYMBOL DESCRIPTION	SYMBOL	LABEL STYLE
Federal American Indian Reservation	[Dotted Pattern]	L'ANSE RES 1880
Off-Reservation Trust Land	[Dotted Pattern]	T1880
State American Indian Reservation	[Dotted Pattern]	Tama Res 4125
Alaska Native Regional Corporation	[Cross-hatch Pattern]	NANA ANRC 52120
State (or statistically equivalent entity)	[Diagonal Lines]	NEW YORK 36
County (or statistically equivalent entity)	[Square Grid]	ERIE 029
Minor Civil Division (MCD) ^{1,2}	[Circle Grid]	Bristol town 07485
Consolidated City	[Circle Grid]	MILFORD 47500
Incorporated Place ³	[Color Fill]	Davis 18100
Census Designated Place (CDP) ³	[Color Fill]	Incline Village 35100
Unified School District	[Purple Dotted]	UNI 03370
Secondary School District	[Orange Dotted]	SEC 99965
Elementary School District	[Green Dotted]	ELM 02220

DESCRIPTION	SYMBOL	DESCRIPTION	SYMBOL
Interstate	[Blue Line with Shield]	Water Body	[Blue Area]
U.S. Highway	[Black Line with Shield]	Swamp or Marsh	[Green Area]
State Highway	[Black Line with Circle]	Glacier	[Blue Area]
Other Road	[Grey Line]	Military	[Blue Area]
4WD Trail, Stamen, Alley, Walkway, or Ferry	[Thin Grey Line]	National or State Park, Forest, or Recreation Area	[Green Area]
Railroad	[Black Line with Cross-ticks]	Inset Area	[Grey Area]
Pipeline or Power Line	[Black Line with Dashes]	Outside Subject Area	[White Area]
Ridge or Fence	[Black Line with Dashes]		
Property Line	[Thin Black Line]		
Nonvisible Boundary or Feature Not Elsewhere Classified	[Dotted Line]		

Where state, county, and/or MCD boundaries coincide, the map shows the boundary symbol for only the highest-ranking of these boundaries.

1 A "*" following an MCD name denotes a false MCD. A "*" following a place name indicates that a false MCD exists with the same name and FIPS code as the place; the false MCD label is not shown.

2 MCD boundaries are shown in the following states in which MCDs have functioning governments: Connecticut, Maine, Massachusetts, Michigan, Minnesota, New Hampshire, New Jersey, New York, Pennsylvania, Rhode Island, Vermont, and Wisconsin.

3 Place label color correlates to the place fill color.

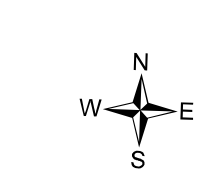
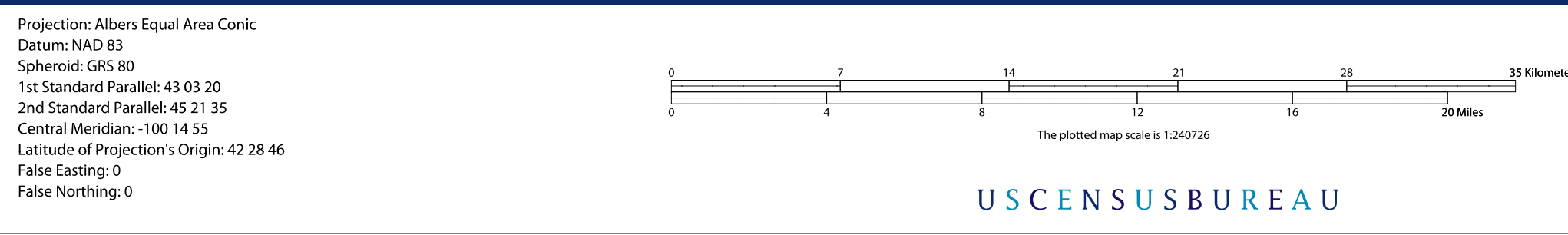
SCHOOL DISTRICTS WITHIN COUNTY

TYPE	CODE	NAME
UNI	10950	Custer School District 16-1
UNI	19410	Douglas School District 51-1
UNI	33360	Hill City School District 51-2
UNI	50670	New Underwood School District 51-3
UNI	59820	Rapid City School District 51-4
UNI	75660	Wall School District 51-5



All legal boundaries and names are as of January 1, 2010. The boundaries shown on this map are for Census Bureau statistical data collection and tabulation purposes only; their depiction and designation for statistical purposes does not constitute a determination of jurisdictional authority or rights of ownership or entitlement.

Geographic: Vintage: 2010 Census (reference date: January 1, 2010)
 Data Source: U.S. Census Bureau's MA7/TIGER database (TAB000146)
 Map Created by Geography Division: November 28, 2010



PARENT SHEET 1
 Total Sheets: 1
 Index Sheets: 0
 Parent Sheets: 1
 Inset Sheets: 0

NAME: Pennington County (103)
 ENTITY TYPE: County or statistically equivalent entity
 ST: South Dakota (46)