

# SCHOOL DISTRICT REFERENCE MAP (2010 CENSUS): Clay County, TN

SYMBOL DESCRIPTION		LEGEND	
SYMBOL DESCRIPTION	SYMBOL	SYMBOL	LABEL STYLE
Federal American Indian Reservation			L'ANSE RES 1880
Off-Reservation Trust Land			T1880
State American Indian Reservation			Tama Res 4125
Alaska Native Regional Corporation			NANA ANRC 52120
State (or statistically equivalent entity)			NEW YORK 36
County (or statistically equivalent entity)			ERIE 029
Minor Civil Division (MCD) <sup>1,2</sup>			Bristol town 07485
Consolidated City			MILFORD 47500
Incorporated Place <sup>1,3</sup>			Davis 18100
Census Designated Place (CDP) <sup>3</sup>			Incline Village 35100
Unified School District			UNI 03370
Secondary School District			SEC 99965
Elementary School District			ELM 02220

DESCRIPTION	SYMBOL	DESCRIPTION	SYMBOL
Interstate		Water Body	
U.S. Highway		Swamp or Marsh	
State Highway		Glacier	
Other Road		Military	
Railroad		National or State Park, Forest, or Reservation Area	
Pipeline or Power Line		Inset Area	
Ridge or Fence		Outside Subject Area	
Property Line			
Nonvisible Boundary or Feature Not Elsewhere Classified			

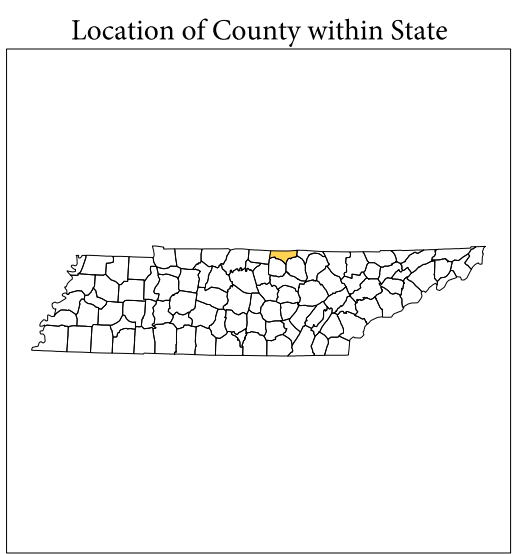
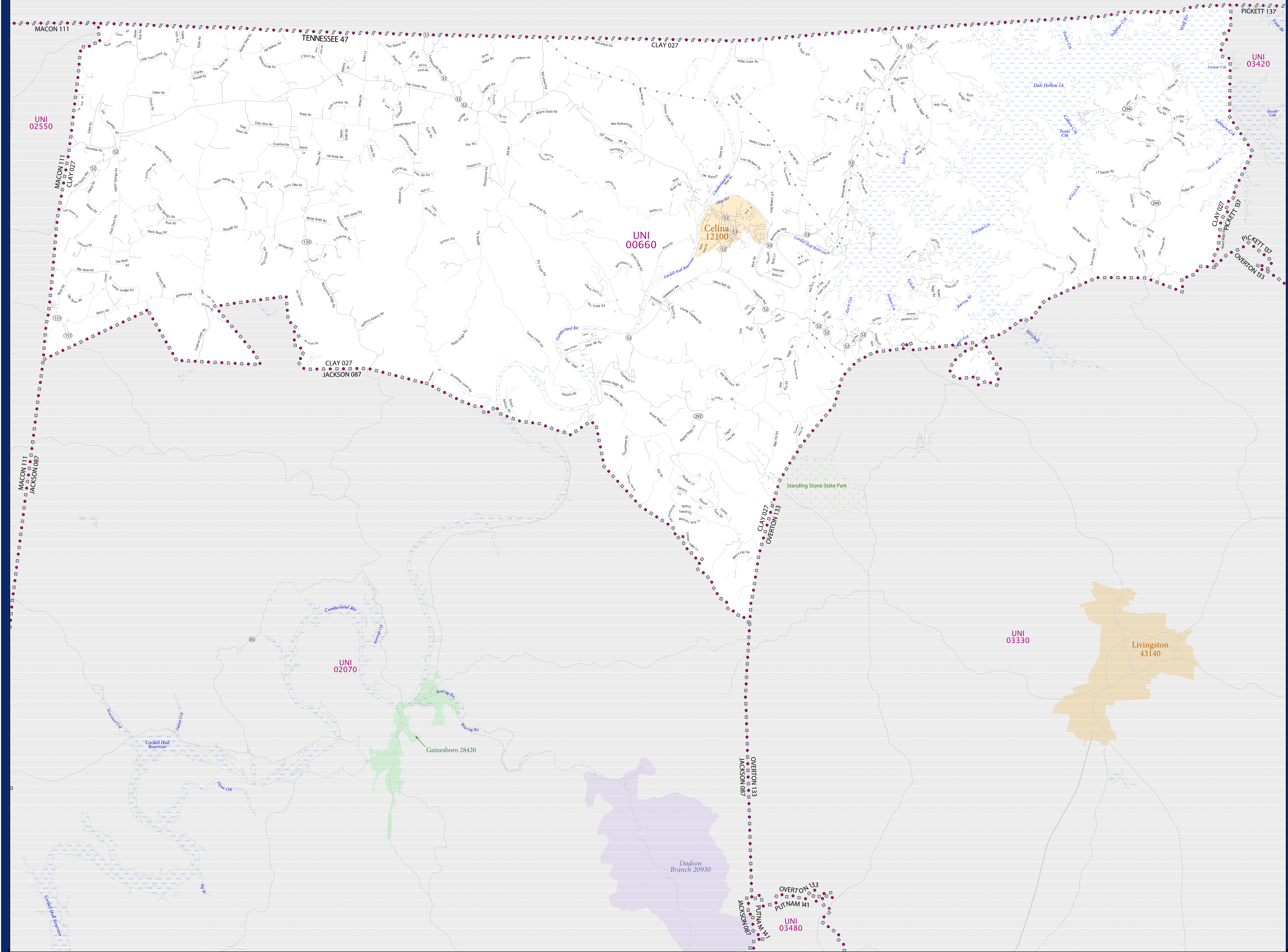
Where state, county, and/or MCD boundaries coincide, the map shows the boundary symbol for only the highest-ranking of these boundaries.

1 A "\*" following an MCD name denotes a false MCD. A "\*" following a place name indicates that a false MCD exists with the same name and FIPS code as the place; the false MCD label is not shown.

2 MCD boundaries are shown in the following states in which MCDs have functioning governments: Connecticut, Maine, Massachusetts, Michigan, Minnesota, New Hampshire, New Jersey, New York, Pennsylvania, Rhode Island, Vermont, and Wisconsin.

3 Place label color correlates to the place fill color.

SCHOOL DISTRICTS WITHIN COUNTY	TYPE	CODE	NAME
UNI	County School District	0000	Clay County School District



All legal boundaries and names are as of January 1, 2010. The boundaries shown on this map are for Census Bureau statistical data collection and tabulation purposes only; their depiction and designation for statistical purposes does not constitute a determination of jurisdictional authority or rights of ownership or entitlement.

Geographic Vintage: 2010 Census (reference date: January 1, 2010)  
 Data Source: U.S. Census Bureau's MAINTIGR database (TAB100147)  
 Map Created by Geography Division: December 12, 2010

U.S. DEPARTMENT OF COMMERCE Economics and Statistics Administration U.S. Census Bureau

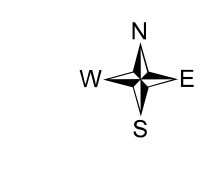
Projection: Albers Equal Area Conic  
 Datum: NAD83  
 Spheroid: GRS 80  
 1st Standard Parallel: 35 16 28  
 2nd Standard Parallel: 36 23 50  
 Central Meridian: 85 58 43  
 Latitude of Projection's Origin: 34 59 38  
 False Easting: 0  
 False Northing: 0

The plotted map scale is 1:200,000

0 2 4 6 8 10 Kilometers

0 2 4 6 8 10 Miles

U.S. CENSUS BUREAU



PARENT SHEET 1  
 Total Sheets: 1  
 Index Sheets: 0  
 Parent Sheets: 0  
 Inset Sheets: 0

NAME: Clay County (027)  
 ENTITY TYPE: County or statistically equivalent entity  
 ST: Tennessee (47)