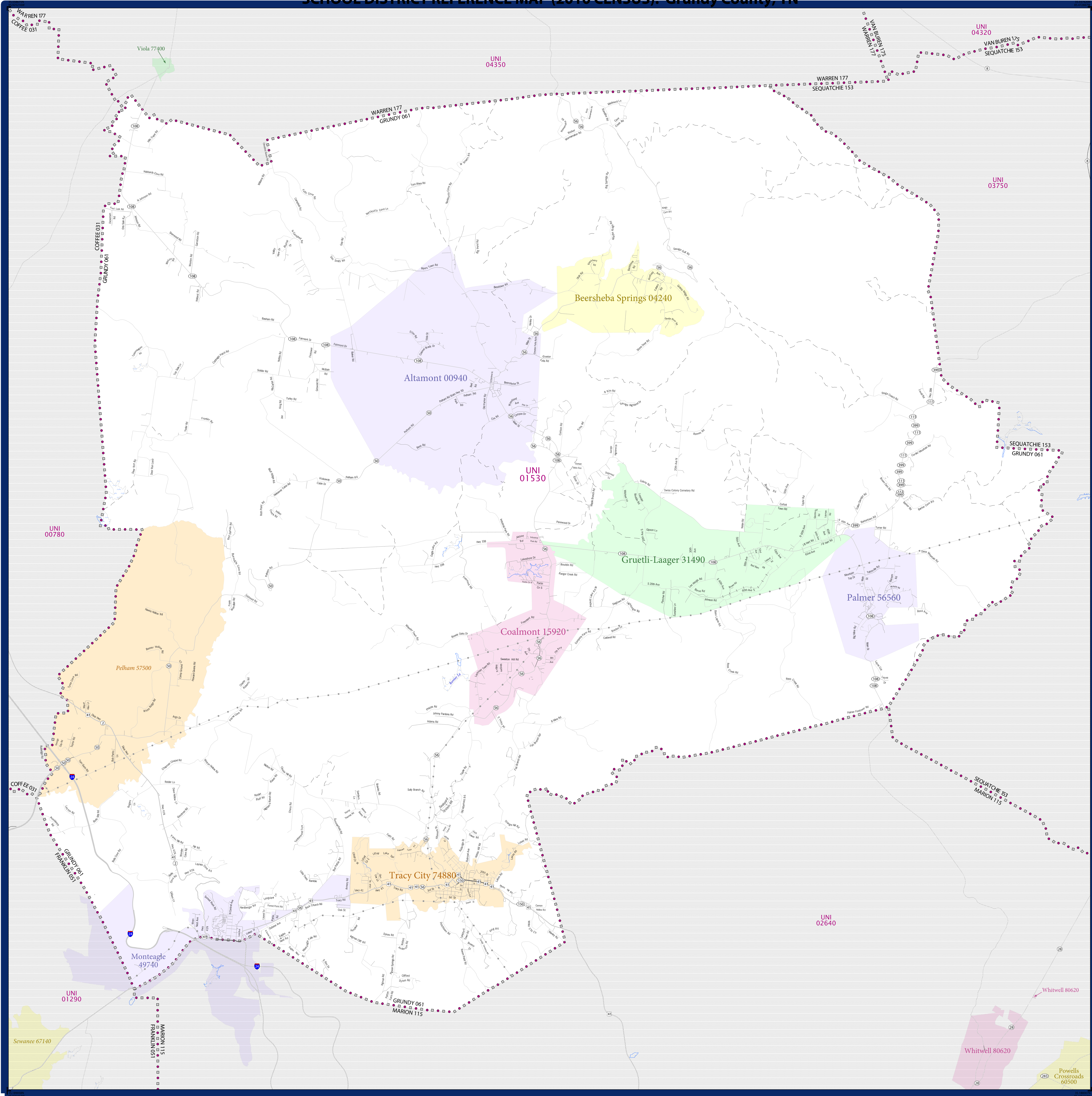


# SCHOOL DISTRICT REFERENCE MAP (2010 CENSUS)- Grundy County, TN



SYMBOL DESCRIPTION		LEGEND	
Federal American Indian Reservation	[Symbol]	Federal American Indian Reservation	L'ANSE RES 1880
Off-Reservation Trust Land	[Symbol]	Off-Reservation Trust Land	T1880
State American Indian Reservation	[Symbol]	State American Indian Reservation	Tama Res 4125
Alaska Native Regional Corporation	[Symbol]	Alaska Native Regional Corporation	NANA ANRC 52120
State (or statistically equivalent entity)	[Symbol]	State (or statistically equivalent entity)	NEW YORK 36
County (or statistically equivalent entity)	[Symbol]	County (or statistically equivalent entity)	ERIE 029
Minor Civil Division (MCD) <sup>1,2</sup>	[Symbol]	Minor Civil Division (MCD) <sup>1,2</sup>	Bristol town 07485
Consolidated City	[Symbol]	Consolidated City	MILFORD 47500
Incorporated Place <sup>3</sup>	[Symbol]	Incorporated Place <sup>3</sup>	Davis 18100
Census Designated Place (CDP) <sup>3</sup>	[Symbol]	Census Designated Place (CDP) <sup>3</sup>	Incline Village 35100
Unified School District	[Symbol]	Unified School District	UNI 03370
Secondary School District	[Symbol]	Secondary School District	SEC 99965
Elementary School District	[Symbol]	Elementary School District	ELM 02220

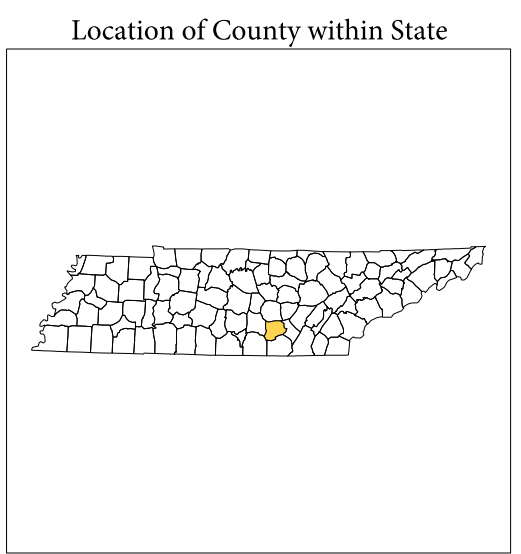
Where state, county, and/or MCD boundaries coincide, the map shows the boundary symbol for only the highest-ranking of these boundaries.

1 A "\*" following an MCD name denotes a false MCD. A "\*" following a place name indicates that a false MCD exists with the same name and FIPS code as the place; the false MCD label is not shown.

2 MCD boundaries are shown in the following states in which MCDs have functioning governments: Connecticut, Maine, Massachusetts, Michigan, Minnesota, New Hampshire, New Jersey, New York, Pennsylvania, Rhode Island, Vermont, and Wisconsin.

3 Place label color correlates to the place fill color.

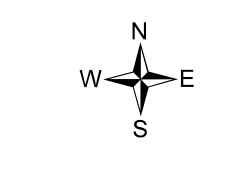
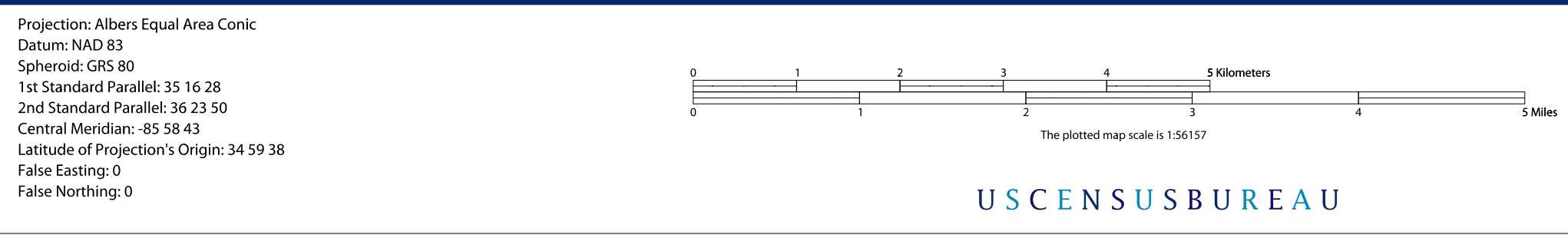
SCHOOL DISTRICTS WITHIN COUNTY		
TYPE	CODE	NAME
UNI	01530	Grundy County School District



All legal boundaries and names are as of January 1, 2010. The boundaries shown on this map are for Census Bureau statistical data collection and tabulation purposes only; their depiction and designation for statistical purposes does not constitute a determination of jurisdictional authority or rights of ownership or entitlement.

Geographic Vintage: 2010 Census (reference date: January 1, 2010)  
 Data Source: U.S. Census Bureau's MA7/TIGER database (TAB100147)  
 Map Created by Geography Division: December 12, 2010

U.S. DEPARTMENT OF COMMERCE Economics and Statistics Administration U.S. Census Bureau



PARENT SHEET 1  
 Total Sheets: 1  
 Index Sheets: 0  
 Parent Sheets: 1  
 Inset Sheets: 0

NAME: Grundy County (061)  
 ENTITY TYPE: County or statistically equivalent entity  
 ST: Tennessee (47)